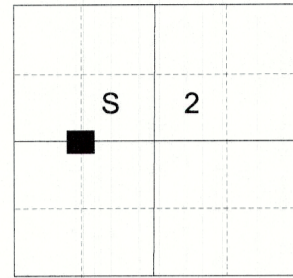


CERTIFIED RECORD OF LAND CORNER MONUMENTATION

HISTORY OF ORIGINAL CORNER ESTABLISHED:

None

T 12 S R 41 E C-18



DESCRIPTION OF CORNER EVIDENCE FOUND:

NONE

DESCRIPTION OF MONUMENT AND ACCESSORIES I ESTABLISHED TO MONUMENT THE ORIGINAL LOCATION OF THIS CORNER:

At position determined by survey, I set a 5/8" by 30" iron pin with 2 1/2" aluminum cap marked as shown below from which:

NEW BEARING OBJECTS:

A 5/8" 30" iron pin bears North 87° 30' East, a distance of 17.70 feet, with 1 1/2" aluminum cap marked BGB SURVEY MARKER NE RP

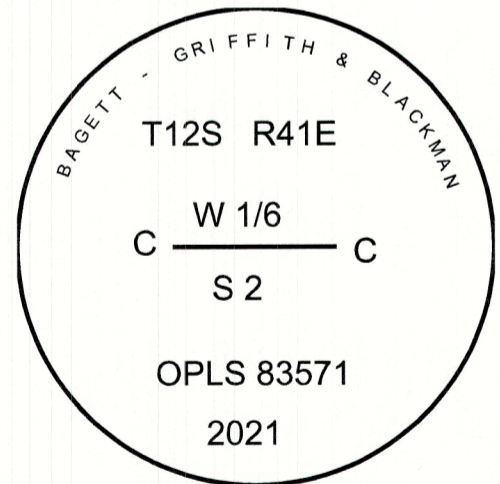
A 5/8" 30" iron pin bears South 3° 00' West, a distance of 13.00 feet, with 1 1/2" aluminum cap marked BGB SURVEY MARKER SW RP

I set a steel fencepost approx. 0.3' Northwesterly from Monument. Monument falls on South edge of Burnt River Road.

Fenceposts also bear South and East approx. 20' along river's edge.

I hereby certify that the corner was monumented on May 5, 2021.

Witness: Kyle Tucker, Emmitt C. Ambert



Renewal Date: June 30, 2021

I used a Leica GS18 with RTK in the establishment of the new accessories. Bearings and distances are measured to the center of the aluminum cap.

C-18

FILED May 12, 2021
BAKER COUNTY SURVEYOR
SURVEY NO. 12-41-39