

LEGEND

- FOUND MONUMENT AS NOTED, OTHERWISE THE MONUMENT IS A BRASS CAP AS NOTED IN BLM SURVEY 2015
- SET 5/8"X30" REBAR WITH YELLOW PLASTIC CAP, STAMPED "K&E EXC INC LS 2596", SET T-POST NEAR MONUMENT
- () RECORD INFORMATION AS PER THE FOLLOWING GENERAL LAND OFFICE ORIGINAL PLATS & NOTES
- () GLO SURVEY 1881
- (()) GLO SURVEY 1917
- [] GLO SURVEY 1924 T13S R41E
- { } BLM SURVEY 2015

NARRATIVE

THE PURPOSE OF THIS SURVEY IS TO MONUMENT THE EXTERIOR OF THE 6 CONTIGUOUS PLACER MINING CLAIMS, AS NAMED IN THE TITLE OF THIS SURVEY. CONTROLLING CORNERS WERE FOUND AND SURVEYED USING GPS IN THE OREGON STATE PLANE NORTH ZONE 3601, NAD83(2011) EPOCH 2010.00 COORDINATE SYSTEM. THE BASIS OF BEARING IS THE EAST TOWNSHIP LINE, BETWEEN THE ORIGINAL CORNER SET AT THE SOUTHEAST CORNER OF SECTION 36 AND THE ORIGINAL CORNER SET AT THE EAST 1/4 CORNER OF SECTION 24, BOTH MONUMENTS WERE SET DURING THE GLO SURVEY OF 1881 BY G. HENDERSON. THE COORDINATES OF ALL THE SURVEYED MONUMENTS WERE ROTATED CLOCKWISE 1°42'51". THE SCALE FACTOR WAS COMPUTED IN TWO SEPARATE LOCATIONS, WITH THE AVERAGE SCALE FACTOR BEING 1.00025444.

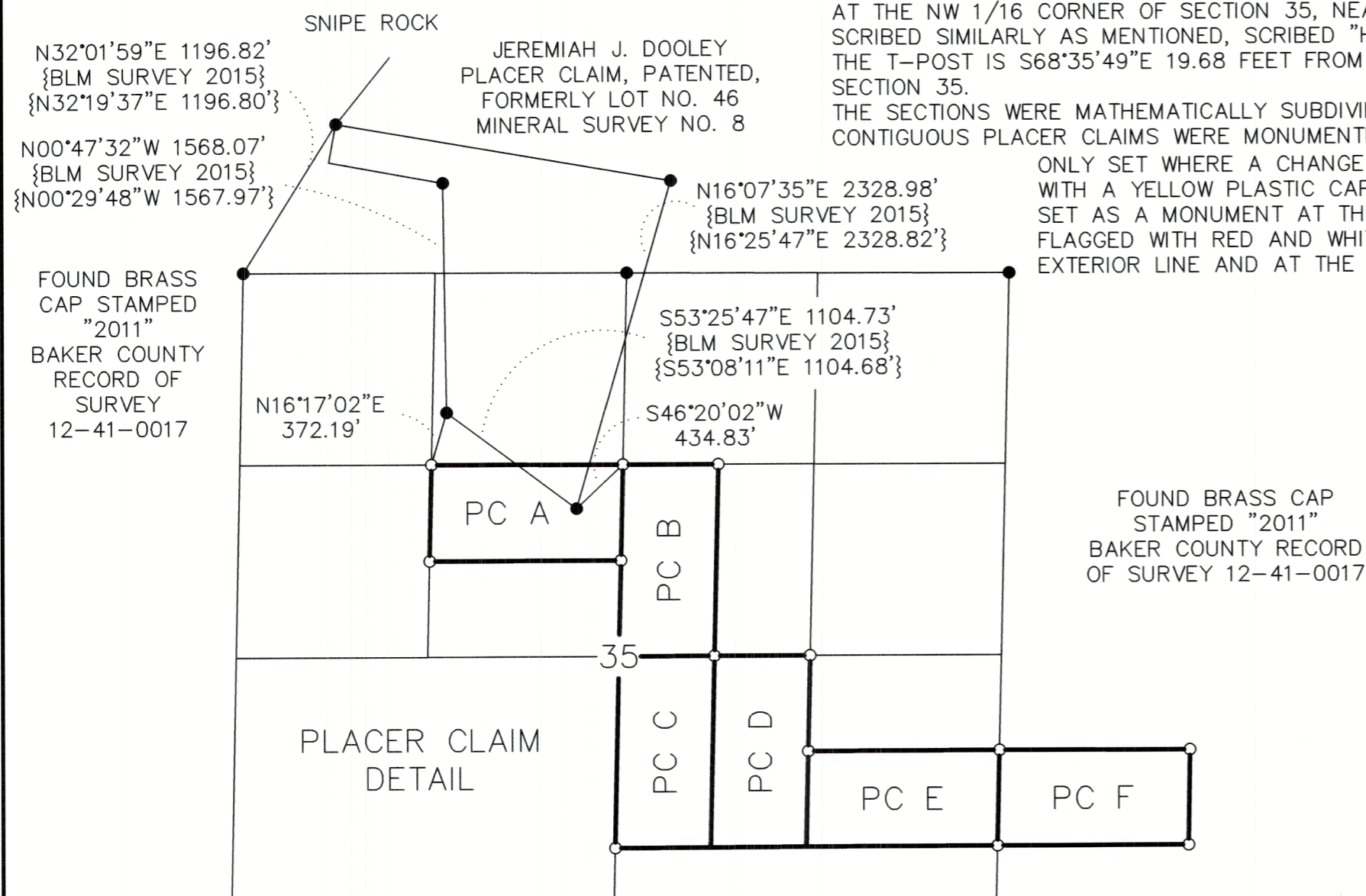
WHILE RESEARCHING THE GENERAL LAND OFFICE ORIGINAL PLATS AND NOTES, THE WORK DONE DURING 1979, COULD NOT BE LOCATED. THE SOUTHWEST CORNER OF SECTION 35 WAS NOT MONUMENTED, ONLY A T-POST WITH AN ATTACHED BUREAU OF LAND MANAGEMENT YELLOW TAG IN A MOUND OF STONE WAS FOUND. THE TAG WAS SCRIBED WITH THE DATE 07/1979, THE INITIALS "T.A.", "HERE" FOR THE LOCATION OF MONUMENT, AND "TRANSIT & CHAIN" IN THE NOTES. A SECOND T-POST WITH BUREAU OF LAND MANAGEMENT YELLOW TAG WAS FOUND AT THE W 1/4 CORNER OF SECTION 35, SCRIBED SIMILARLY AS MENTIONED, IN THE NOTES WAS SCRIBED "BEARING LINE ONLY". THE T-POST IS N20°12'23"E 13.29 FEET FROM THE SINGLE PROPORTIONED W 1/4 CORNER OF SECTION 35.

A T-POST WITH A BUREAU OF LAND MANAGEMENT YELLOW TAG WAS ALSO LOCATED AT THE NW 1/16 CORNER OF SECTION 35, NEAR A FENCE CORNER OF LONG STANDING, SCRIBED SIMILARLY AS MENTIONED, SCRIBED "HERE" FOR THE LOCATION OF MONUMENT. THE T-POST IS S68°35'49"E 19.68 FEET FROM THE ACTUAL NW 1/16 CORNER OF SECTION 35.

THE SECTIONS WERE MATHEMATICALLY SUBDIVIDED AND THE EXTERIOR OF THE 6 CONTIGUOUS PLACER CLAIMS WERE MONUMENTED. MONUMENTS ON THE EXTERIOR WERE ONLY SET WHERE A CHANGE OF BEARINGS EXIST. A 5/8"X30" REBAR WITH A YELLOW PLASTIC CAP, STAMPED "K&E EXC INC LS 2596" WAS SET AS A MONUMENT AT THE ANGLE POINTS. THE EXTERIOR LINE WAS FLAGGED WITH RED AND WHITE RIBBON, WITH T-POSTS SET ON THE EXTERIOR LINE AND AT THE MONUMENTED CORNERS.

RECORD OF SURVEY
EXTERIOR BOUNDARY OF PLACER CLAIMS: IRON SPOON, IRON SPOON EAST,
LUCKY DREAM, LUCKY DREAM EAST, BLUE TRIGGER, BLUE TRIGGER EAST
LOCATED IN NW1/4, NE1/4, SE1/4 OF SECTION 35, SW1/4 OF SECTION 36, T12S, R41E, W.M.
BAKER COUNTY, OREGON
FOR: K&E EXCAVATING INCORPORATED

FOUND 12X10X8 STONE
 "4" CHISELED IN STONE
 (12X8X8 STONE)



- PLACER CLAIM NAME AND LEGAL DESCRIPTION**
- PC A IRON SPOON N1/2SE1/4NW1/4 OF SECTION 35
 - PC B IRON SPOON EAST W1/2SW1/4NE1/4 OF SECTION 35
 - PC C LUCKY DREAM W1/2NW1/4SE1/4 OF SECTION 35
 - PC D LUCKY DREAM EAST E1/2NW1/4SE1/4 OF SECTION 35
 - PC E BLUE TRIGGER S1/2NE1/4SE1/4 OF SECTION 35
 - PC F BLUE TRIGGER EAST S1/2NW1/4SW1/4 OF SECTION 36

K&E EXCAVATING INCORPORATED
 3871 LANGLEY ST. SE
 SALEM, OREGON 97317
 503-399-4833
 KEEX.NET

FILED September 24, 2020
 BAKER COUNTY SURVEYOR
 SURVEY NO. 14-41-37

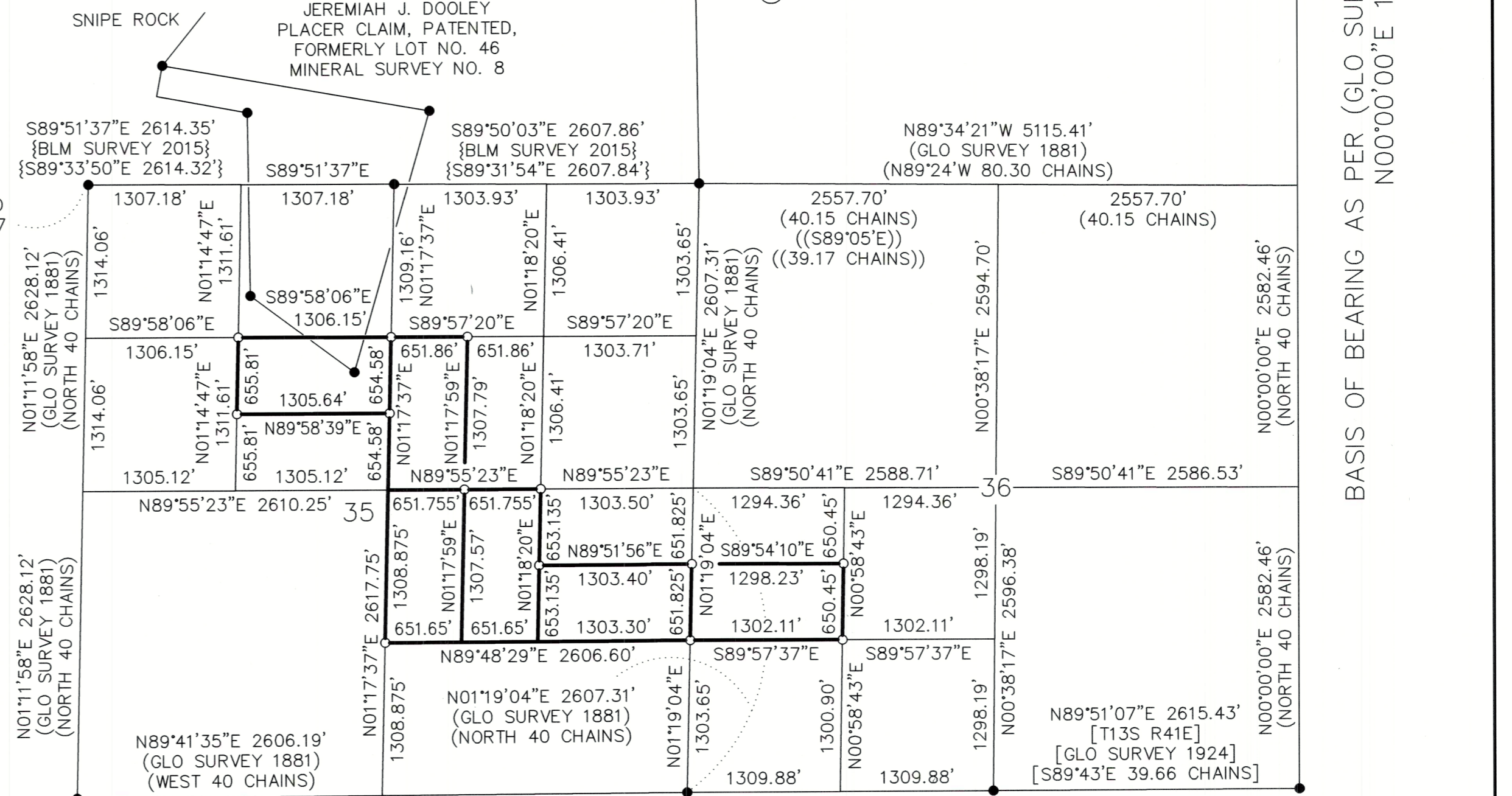
REGISTERED PROFESSIONAL LAND SURVEYOR

OREGON
 JANUARY 19, 1993
 JAMES E. SWENSON
 2596
 RENEWS JUNE 30, 2022

0 500 1500 3000



SCALE 1"=1000'
 SEPTEMBER 10, 2020



FOUND T-POST WITH YELLOW BLM TAG, SCRIBED BY T.A. "1979" IN MOUND OF STONE WITH OLD MOUND OF STONE ADJACENT

FOUND BRASS CAP STAMPED "1924" [T13S R41E] [GLO SURVEY 1924] T-POST WITH YELLOW BLM TAG "1979"

FOUND BRASS CAP STAMPED "1924" IN MOUND OF STONE [T13S R41E] [GLO SURVEY 1924]

FOUND UPRIGHT BURIED STONE 12X8 WITH 6 NOTCHES ON EAST AND NORTH FACE (16X12X8 STONE) MOUND OF STONE USFS ALUMINUM TAG IN MOUND OF STONE

BASIS OF BEARING AS PER (GLO SURVEY 1881 NORTH 200 CHAINS) N00°00'00"E 12912.29'