

NW SECTION CORNER OF SECTION 27 TO THE N 1/4 CORNER OF SECTION 27  
(S89°44'19"E 2602.92')  
(S89°31'E 39.475 CHAINS GLO RETRACEMENT SURVEY 1917)  
(N 89°56'W 40.10 CHAINS ORIGINAL GLO SURVEY 1881)

21 22  
28 27

S89°44'33"E  
2603.02'

EXCEPTING THEREFROM THE GRIFFIN PLACER MINING CLAIM  
THAT PORTION LYING NORTHEASTERLY OF THE FOLLOWING DESCRIBED FENCE  
WARRANTY DEED TO ELLIOTT RANCHES, INC  
DEED 72 46 072, FILED NOVEMBER 07, 1972  
BAKER COUNTY BOOK OF RECORDS

LINE	BEARING	DISTANCE	RECORD BEARING	RECORD DISTANCE
A-B	N00°55'44"W	159.2'	N00°04'E	165'
B-C	N89°58"W	53.0'	N88°26"W	64.4'
C-D	N79°50"W	311.8'	N79°50"W	311.8'
D-E	N63°12"W	333.1'	N63°12"W	333.1'
E-F	N77°11"W	301.5'	N77°11"W	301.5'
F-G	N13°29"E	12.3'	N13°29"E	12.3'
G-H	N74°10"W	206.3'	N74°10"W	206.3'
H-J	S78°57"W	325.2'	S78°57"W	325.2'
J-K	N83°54"W	636.5'	N83°54"W	636.5'
K-L	N63°57"W	132.5'	N63°57"W	132.5'
L-M	N33°12"W	67.6'	N33°12"W	67.6'
M-N	N07°27"W	287.9'	N07°27"W	287.9'
N-P	N08°41"E	144.7'	N08°41"E	144.7'
P-Q	N86°39"E	273.5'	N86°39"E	273.5'
Q-R	S76°19"E	63.7'	S76°19"E	80' +/-
R-S	N00°23'50"W	254.8'		

W 1/4 CORNER OF SECTION 27 TO THE E 1/4 CORNER OF SECTION 27  
S89°47'53"E 5173.74'  
(S89°47'50"E 5173.72')

**LEGEND**

- FOUND 2 1/2" BRASS CAP ON THE EXTERIOR OF SECTION 27, SET DURING BAKER COUNTY RECORD OF SURVEY 12-41-0017. ALL MONUMENTS IN GOOD CONDITION, EACH SURROUNDED BY A MOUND OF STONE.
- FOUND 2 1/2" ALUMINUM CAP AT O. S. BUCKLAND PLACER CLAIM CORNER NUMBER 9. MONUMENT IN GOOD CONDITION, SURROUNDED BY A MOUND OF STONE. SET DURING BAKER COUNTY RECORD OF SURVEY 12-41-0017.
- △ FOUND 3 1/4" BRASS DISK, AT J. J. DOOLEY PLACER CLAIM CORNER NUMBER 1. MONUMENT IN GOOD CONDITION, SET 0.7 FEET BELOW SURFACE IN FIELD. SET BY BLM DURING DEPENDENT RESURVEY AND SUBDIVISION OF SECTION 26, OFFICIALLY FILED OCTOBER 06, 2015.
- SET 5/8" X 30" REBAR WITH YELLOW PLASTIC CAP, STAMPED "K&E EXC INC LS 2596"
- ( ) RECORD INFORMATION AS PER BAKER COUNTY RECORD OF SURVEY 12-41-0017.

REGISTERED  
PROFESSIONAL  
LAND SURVEYOR

OREGON  
JANUARY 19, 1993  
JAMES E. SWENSON  
2596

RENEWS JUNE 30, 2022

**BASIS OF BEARING**

N 1/4 CORNER OF SECTION 27 TO THE S 1/4 CORNER OF SECTION 27  
S00°13'18"E 5198.69'  
(S00°13'18"E 5198.71')

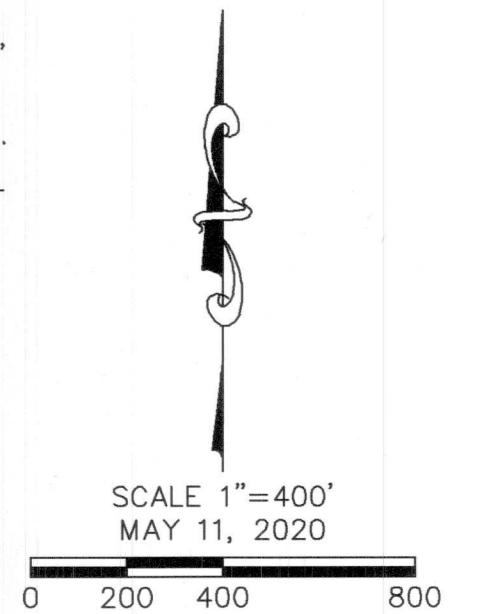
**RECORD OF SURVEY**  
**JOHN B. GRIFFIN PLACER CLAIM,**  
**PATENTED, MINERAL CERTIFICATE NO. 88**  
**GENERAL LAND OFFICE NO. 22133**

for: **PHILIP WIRTH**  
**CLAIM LOCATED IN THE**  
**SE 1/4 AND SW 1/4 OF SECTION 27, T 12 S, R 41 E, W.M.,**  
**BAKER COUNTY, OREGON**

**NARRATIVE**

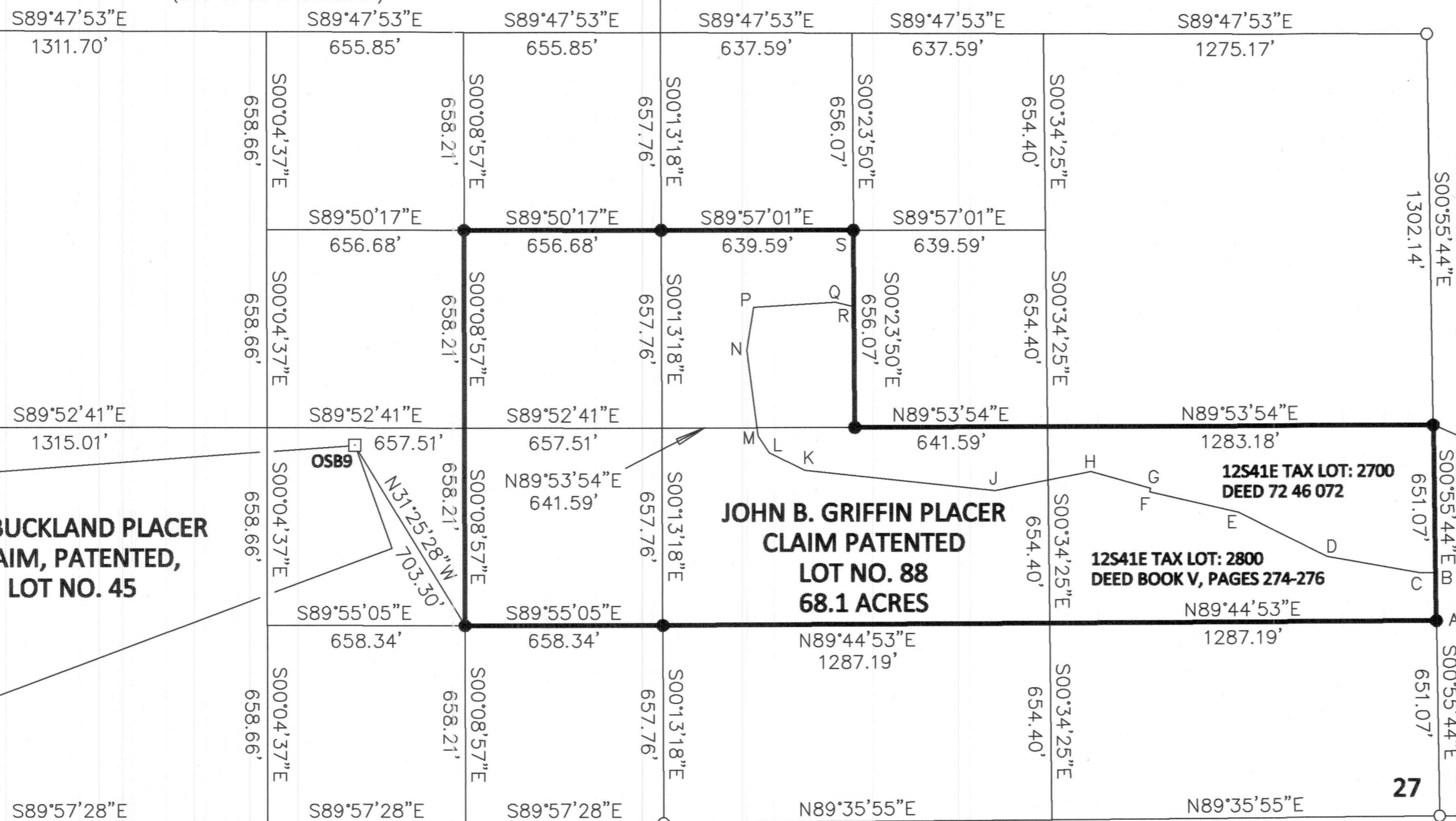
THE PURPOSE OF THIS SURVEY IS TO MONUMENT THE CORNERS OF THE J. B. GRIFFIN PLACER CLAIM, PATENTED, MINERAL CERTIFICATE NO. 88. THE LEGAL DESCRIPTION FOR THIS CLAIM IS FILED IN THE BAKER COUNTY DEED OF RECORDS IN BOOK V, PAGES 274 - 276, ORIGINALLY RECORDED BY THE GENERAL LAND OFFICE, JANUARY 10, 1889. THE CLAIM IS DESCRIBED AS COMPRISING THE SW 1/4 OF THE NW 1/4 OF THE SE 1/4, THE SE 1/4 OF THE NE 1/4 OF THE SW 1/4, THE NE 1/4 OF THE SE 1/4 OF THE SW 1/4, AND THE N 1/2 OF THE S 1/2 OF THE SE 1/4 OF SECTION 27, IN TOWNSHIP 12 SOUTH, RANGE 41 EAST, OF THE WILLAMETTE MERIDIAN. THE RETRACEMENT SURVEY OF 1917, SHOWS THE O. S. BUCKLAND PLACER CLAIM, PATENTED, LOT NO. 45 AND THE JEREMIAH J. DOOLEY PLACER CLAIM, PATENTED, (FORMERLY LOT NO. 46) M. S. NO. 8 CORNERS BEING SET, THE J. B. GRIFFIN PLACER CLAIM CORNERS ARE NOT SHOWN AS BEING SET, NOR DO THE RETRACEMENT NOTES INDICATE THE CORNERS WERE SET. THE PREVIOUSLY RESET EXTERIOR CORNERS OF SECTION 27, RESET DURING BAKER COUNTY RECORD OF SURVEY 12-41-0017, WERE SURVEYED AND THE SUBDIVISION OF SECTION 27 WAS PERFORMED TO DETERMINE THE POSITIONS OF THE EXTERIOR ANGLE POINTS OF THE J. B. GRIFFIN PLACER CLAIM. MONUMENTS WERE SET AS NOTED ON THIS PLAT.

THE EXISTING FENCE WAS SURVEYED AND COMPARED TO THE DEED INFORMATION FROM DEED 72 46 072, BAKER COUNTY BOOK OF RECORDS. DEED B0021 0018, CONTAINS TWO TYPOGRAPHICAL ERRORS IN THE EXCEPTION DESCRIPTION. THE DEED INFORMATION WAS TRANSLATED TO THE SURVEYED POSITION OF POINT "P". THE DEED INFORMATION IS +/- 2 FEET FROM THE SURVEYED FENCE THROUGH LINES "K-Q". THERE EXIST SOME DIFFERENCES THROUGH LINES "E-K", DIFFERING BY A MAXIMUM OF 14 FEET FROM THE SURVEYED FENCE TO THE DEED FENCE LINE. THE DEED INFORMATION IS +/- 2 FEET FROM THE SURVEYED FENCE THROUGH LINES "C-E".



W 1/4 OF SECTION 27 TO THE NW SECTION CORNER OF SECTION 27  
(N00°13'58"E 2570.31')  
(N00°11'E 38.96 CHAINS GLO RETRACEMENT SURVEY 1917)  
(NORTH 40.00 CHAINS ORIGINAL GLO SURVEY 1881)

SW SECTION CORNER OF SECTION 27 TO THE W 1/4 CORNER OF SECTION 27  
(N00°04'03"E 2638.31')  
(N00°04'48"E 2638.04')  
(N00°03'E 40.00 CHAINS ORIGINAL GLO SURVEY 1881)  
(NORTH 40.00 CHAINS ORIGINAL GLO SURVEY 1881)



**O.S. BUCKLAND PLACER CLAIM, PATENTED, LOT NO. 45**

**JOHN B. GRIFFIN PLACER CLAIM PATENTED LOT NO. 88 68.1 ACRES**

**JEREMIAH J. DOOLEY PLACER CLAIM, PATENTED, (FORMERLY LOT NO. 46) M.S. NO. 8**

SW SECTION CORNER OF SECTION 27 TO THE S 1/4 CORNER OF SECTION 27  
S89°57'28"E 2636.66'  
(S89°57'08"E 2637.13')  
(WEST 39.93 CHAINS GLO RETRACEMENT SURVEY 1917)  
(S89°53'W 39.77 CHAINS ORIGINAL GLO SURVEY 1881)

S 1/4 OF SECTION 27 TO THE SE SECTION CORNER OF SECTION 27  
N89°35'55"E 2582.44'  
(N89°36'25"E 2581.68')  
(S89°35'W 39.12 CHAINS GLO RETRACEMENT SURVEY 1917)  
(S89°53'W 39.77 CHAINS ORIGINAL GLO SURVEY 1881)

**K&E EXCAVATING INCORPORATED**  
**3871 LANGLEY ST. SE**  
**SALEM, OREGON 97317**  
**503-399-4833**  
**KEEX.NET**

FILED June 11, 2020  
BAKER COUNTY SURVEYOR  
SURVEY NO. 12-41-36