

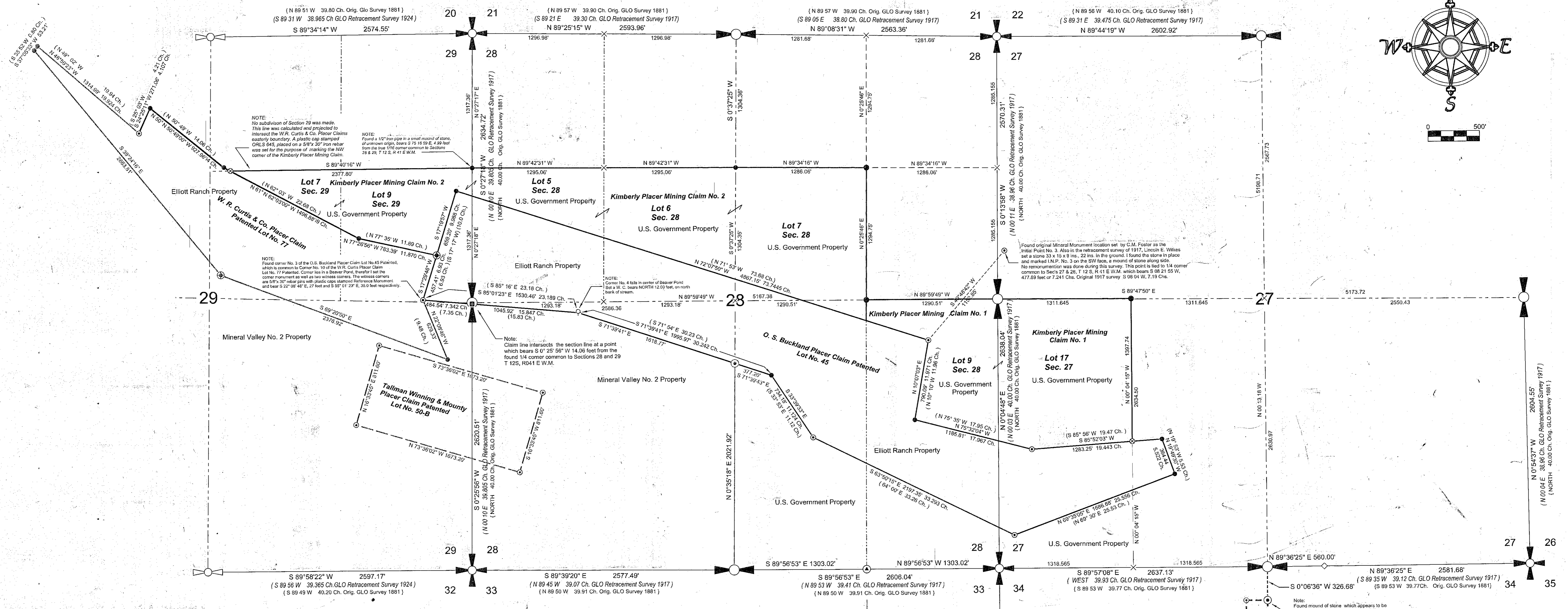
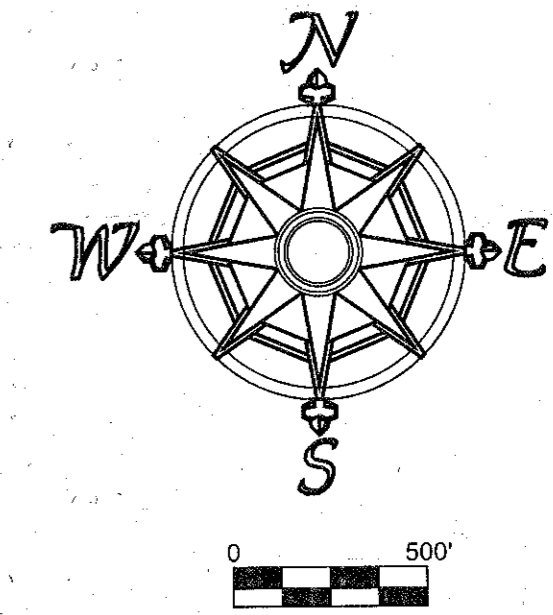
# WESTERN MINE DEVELOPMENT LLC, PROPERTY LINE SURVEY

Portions of Sections 27, 28, and 29, T 12 S, R 41 E W.M.

BAKER COUNTY OREGON

Scale 1" = 500"

Date August 31, 2011



**LEGEND**

- Found original Section Corner in place. I monumented with a stamped 2 1/2 inch brass cap on a 1 inch galvanized iron pipe, flared and buried to within 6 inches above the surface of the ground, with referencing accessories. Record of land corner monumentation is filed with Baker County Surveyor.
- Found original Quarter Corner in place. I monumented with a stamped 2 1/2 inch brass cap on a 1 inch galvanized iron pipe, flared and buried to within 6 inches above the surface of the ground with referencing accessories. Record of land corner monumentation is filed with Baker County Surveyor.
- Found One Quarter Corner in place, being a 2 1/2 inch brass cap on 1/2 inch iron pipe, as set by Cadastral Surveyor, Lincoln E. Wilkes during a retracement survey he made in 1924.
- Found 2 1/2 inch brass cap on the 1/2 inch iron pipe in place at patented claim corners, as set by Cadastral Surveyor Lincoln E. Wilkes, during his retracement survey of 1924.
- Found original stone at mining claim corner, in place as described in the retracement survey made by Cadastral Surveyor, Lincoln E. Wilkes during his survey of 1917. I set a stamped 2 1/2 inch aluminum cap on a 5/8" x 30" rebar, driven to within 6 inches above the surface of the ground alongside the original stone that I left undisturbed.
- Set a stamped 2" Aluminum Cap on a 5/8" x 30" rebar pin for 1/16 corner in a mound of stone.
- At the mining claim corners that either had been lost or destroyed and the corners in the interior subdivision on Sections 27 and 28, T 12 S, R 41 E, I set an appropriately stamped 2 1/2 inch Aluminum cap placed on a 5/8" x 30" iron rebar, driven to within 6 inches of the surface, in a large mound of stone.
- Set Witness Corner, being a 5/8" x 30" rebar with plastic cap marked Reference Monument, driven to within 6 inches above the surface of the ground.
- At the extreme Northwest and Southeast corners of the Kimberly Mining Claims No. 1 & 2, I placed a plastic cap stamped ORLS 645 on a 5/8" x 30" iron rebar, to mark the location where the lines of Kimberly No. 1 & 2 intersect the boundaries of the W.R. Curtis and O.S. Buckland patent mining claims.
- Line was run easterly from quarter corner to the thread of the creek in Town Gulch. No monument was set at this location.
- During this survey I was unable to set the monument at actual corner location, as point falls deep under water. Set Witness Corner as shown on map.
- Corner location not occupied or set during this survey.
- Set 5/8" x 30" rebar pin with plastic cap stamped Reference Monument at intersection of claim boundary and section line.
- Projected line intended to only show different ownerships.

**NARRATIVE:**

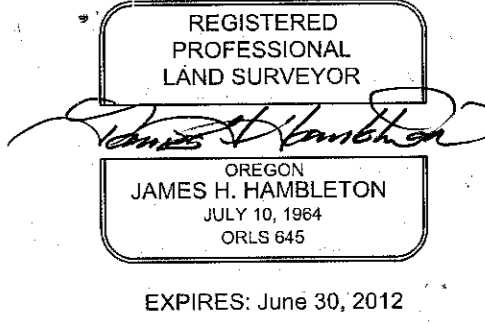
I, James H. Hambleton, Oregon Registered Land Surveyor No. 645, of 18483 West Campbell Loop, Baker City, Oregon 97814 and Phone Number 541-524-1256, have made the following survey at the request of Philip Wirth of Western Mine Development LLC, for the purpose of correctly locating property lines and corners of their mining property located on Clarks Creek, to enable better control of their mining operations.

The original survey for a patent of the O.S. Buckland Placer claim, as well as the W.R. Curtis & Co. Placer claim, was made by U.S. Deputy Surveyor, Charles M. Foster, in the year 1872. Township 12 South, Range 41 East, Willamette Meridian was originally surveyed by George Henderson, Deputy Surveyor under Contract Number 409, dated August 22, 1881. A retracement survey was then made by Cadastral Surveyor, Lincoln E. Wilkes, under special instructions dated October 28, 1916. His survey commenced July 23, 1917. Between the years 1917 and 1926, Lincoln E. Wilkes worked in both T 12 S, R 40 & 41 E, W.M. He retraced several patented mining claims in T 12 S R 41 E during this time frame.

Ira L. Hoffman, Baker County Surveyor, between the years 1899 and 1930, made several surveys in the Clarks Creek area of T 12 S, R 41 E, W.M., as he was mentioned on several occasions by Lincoln E. Wilkes in his field notes. Knowing this fact, although Hoffman's survey records does not show him visiting the 1/4 corner common to Sections 27 and 34, T 12 S, R 41 E, W.M., I can only assume he was there, as I found a very suspicious firmly set stone that did not agree with the Wilkes survey notes. After much further research and investigation, I accepted this stone as the true corner location because the survey bearings and distances to the corner very closely agrees with the Wilkes survey of 1917, as well as the tie to the Clarksville Cemetery, made by Henderson in his survey of 1881.

Using public and private records, I made the foregoing survey using a TOPCON-XT Global Positioning System to accomplish the fieldwork. The Meridian used for this survey was based on the two section corners common to Section 27 and 28, T 12 S, R 41 E, as this was a long intervisible line of sight. I used an assumed bearing for this line, rotating my fieldwork to more closely fit Lincoln Wilkes' survey of 1917. This basis then enabled me to better retrace his survey. Through an exhaustive search, I recovered all the corners needed in this survey and after completing the initial fieldwork, marked the desired lines with wooden lath and ribbon. I then set more permanent monumentation for all the corners involved in this survey. Corners are set as shown on this map. The GLO land corners are described in more detail on the Certified Record of Land Corner Monumentation sheets filed separately in the Baker County Surveyor's office.

This survey is an addition to a survey I have recently made for Mineral Valley No. 2, of which is filed with the Baker County Surveyor, under Survey No. 12-41-4, and filing date of June 28, 2011.



EXPIRES: June 30, 2012