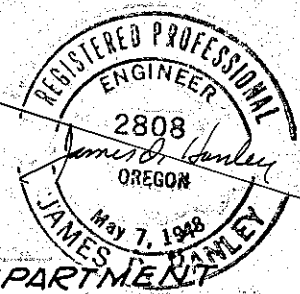
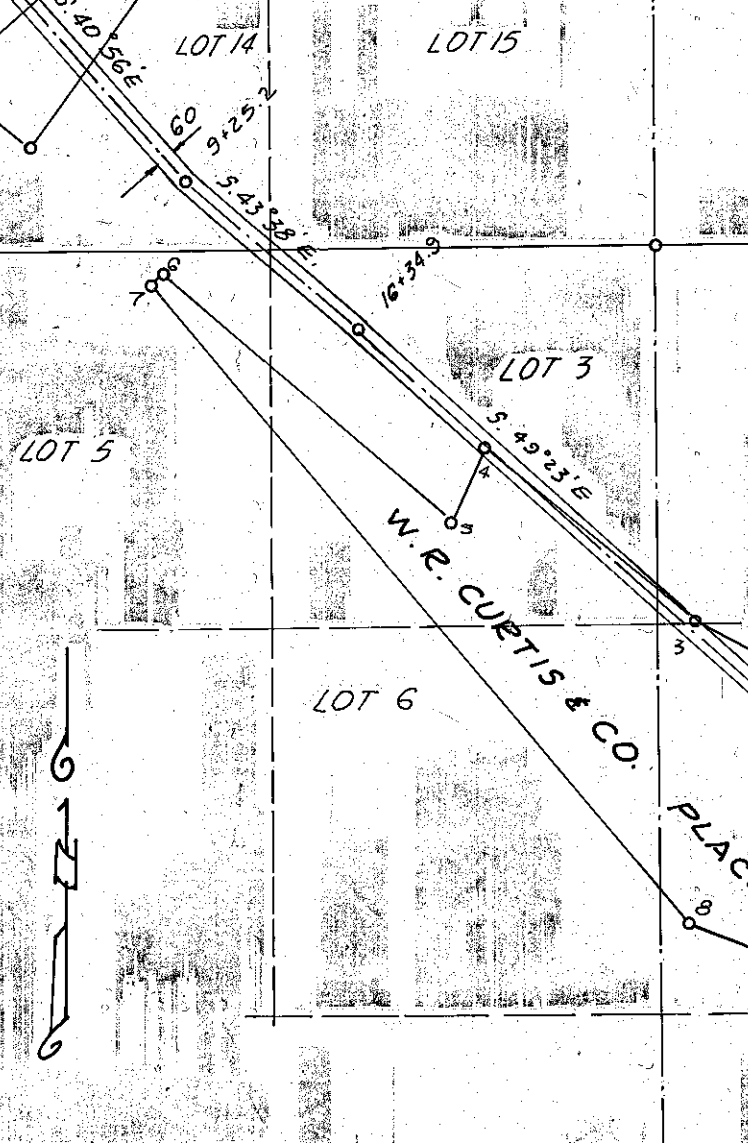


Sta. 0+00 = 840' ± N.
 + 2,221' ± W. of 1/4 cor.
 bet. Secs. 20 & 29

SUTTON LAKE & MEACHAM
 PLACER

T. 12 S., R. 41 E., W.M.

TO BRIDGEPORT



FILED June 19, 1972
 BAKER COUNTY SURVEYOR
 SURVEY NO. 12-41-2

BAKER COUNTY ROAD DEPARTMENT
 CLARKS CREEK ROAD

Surveyed April 7, 1953

Scale 8" = 1 Mile
 1" = 660'