

HIGH BAR PLACER MINING CLAIMS BOUNDARY SURVEY

Portions of Sections 10 & 15, T 12 S, R 39 E W. M.

BAKER COUNTY OREGON

Scale 1" = 600'

Date April 26, 2013

Narrative:

I, James H. Hambleton, Oregon Registered Land Surveyor No. 645, of 18483 West Campbell Loop, Baker City, Oregon 97814, and phone number 541-524-1256, have made the following survey at the request of Philip Wirth of the High Bar Mining LLC, for the purpose of correctly locating property lines and corners of their mining property located on Pine Creek, near the Herford Valley. This will enable better control of their mining operations.

The original GLO survey was made by Henry Meldrum, Deputy Surveyor, under contract number 226, dated May 29, 1875. His survey covered only the South 12 sections of T 12 S, R 39 E. The remaining portion of T 12 S, R 39 E. was later surveyed by Reuben R. Leigh, Deputy Surveyor, under contract number 462, dated April 11, 1883.


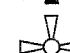

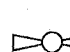


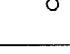

Additional surveys have been made in this area by others in recent times, the surveys are filed in the Baker County Surveyors Office.

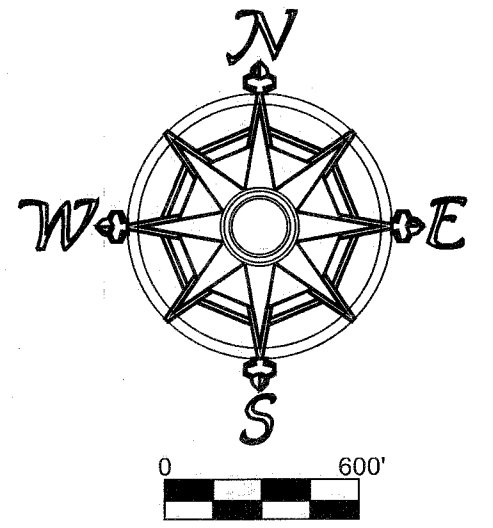
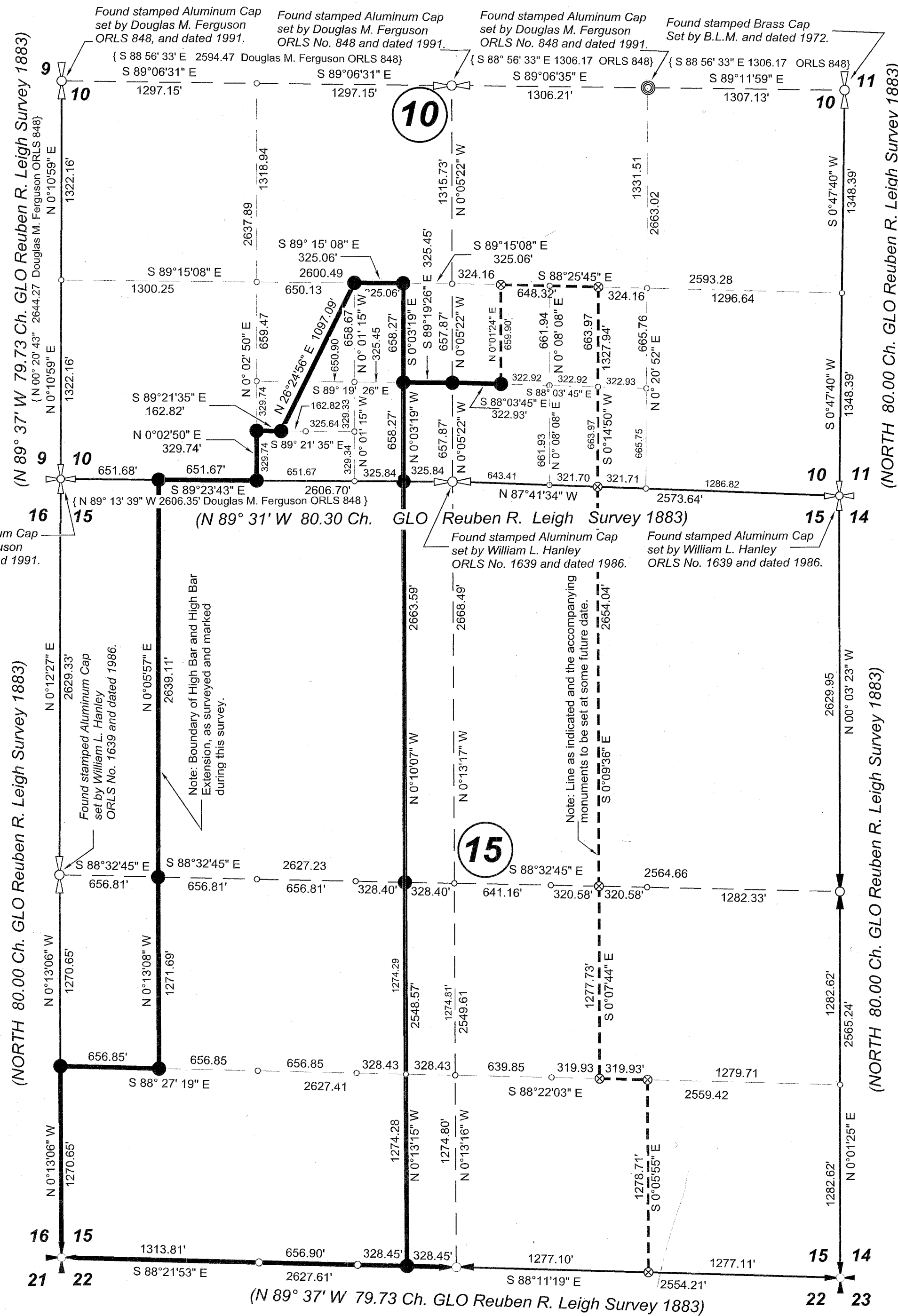
Survey work by William L Hanley ORLS No. 1639 dated 1986.

Survey work by Douglas M. Ferguson ORLS No. 848, dated 1991, being shown on map by parenthesis as such { }.

Using public and private records, I made the foregoing survey using a TOPCON- XT Global Positioning System to accomplish this fieldwork. The Meridian used for this survey was based on a two-mile straight line between two corners, of which are the section corner common to Sections 25, 26, 35 and 36 and the section corner common to Sections 13, 14, 23 and 24, T 12 S, R 39 E Willamette Meridian. I used an assumed bearing of N 00° 00' 00" E, for said line being between these two section corners. Making this assumption gave me a common Meridian for this survey as well as an adjacent survey that I have previously made and filed as Survey No. 12-39-50, being recorded in the Baker County Surveyor's office. These two surveys have common lines, thus I felt it was important to use the same Meridian basis. All the original GLO corners involved in this survey have been recovered and permanently monumented with either brass or aluminum caps and are described in more detail on the Certified Record of Land Corner Monumentation sheets filed separately in the Baker County Surveyors office. After completing the initial fieldwork I have marked the designated lines with wooden lath and blue and white ribbon.

LEGEND

-  Original GLO Section Corner, I recovered and permanently monumented previously. Record of land corner monumentation is filed separately in the office of the Baker County Surveyor.
-  Original GLO section corner recovered and permanently monumented by others as shown on the map. Record of land corner monumentation is on file in the office of the Baker County Surveyor.
-  Original GLO Quarter Corner, I recovered and permanently monumented previously. Record of land corner monumentation is filed separately in the office of the Baker County Surveyor.
-  Original GLO Quarter Corner recovered and permanently monumented by others as shown on the map. Record of land corner monumentation is on file in the office of the Baker County Surveyor.
-  Aluminum Cap monument for the East-center 1/16 corner, set by ORLS No. 848, in 1991.
-  Set 5/8" x 30" rebar pin with plastic cap stamped ORLS 645, in a mound of stone.
-  Calculated position, monument to be set at a future date.
-  Calculated position only no pin set during this survey.



REGISTERED
PROFESSIONAL
LAND SURVEYOR

James H. Hambleton

OREGON
JAMES H. HAMBLETON
JULY 10, 1964
LICENSE # 645

EXPIRES: June 30, 2014

FILED July 15, 2013
BAKER COUNTY SURVEYOR
SURVEY NO. 12-39-80