

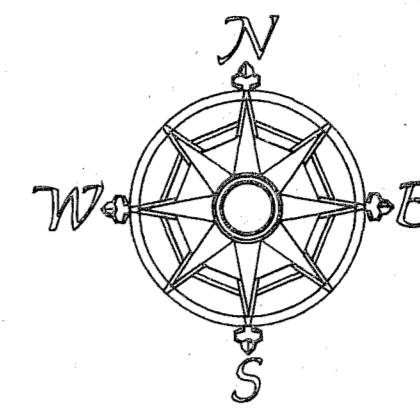
HIGH BAR MINING LLC, PROPERTY LINE SURVEY

Portions of Sections 22, 23, 26 and 27, T 12 S, R 39 E W. M.

BAKER COUNTY OREGON

Scale 1" = 1000'

Date: August 10, 2012

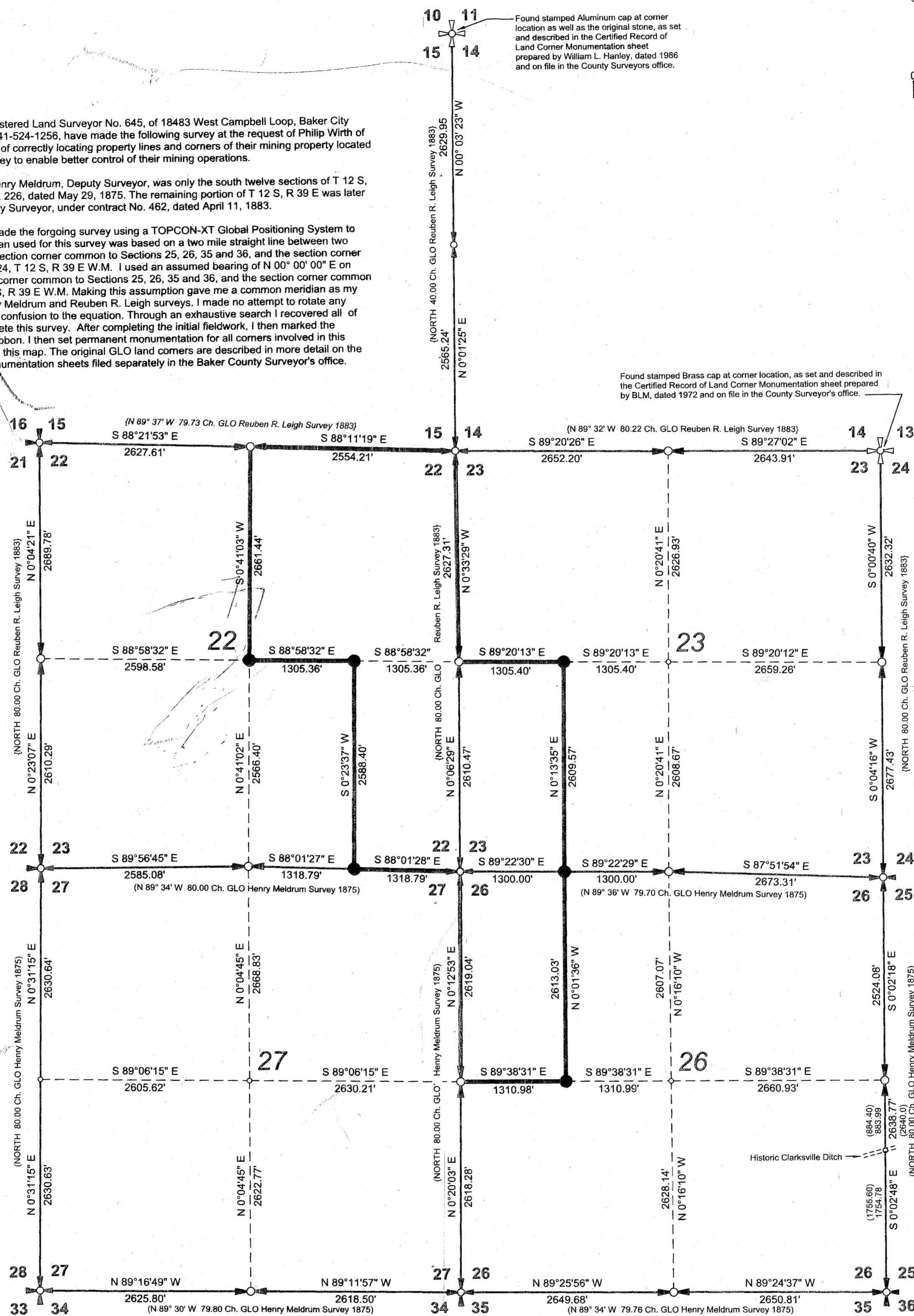


Narrative:

I, James H. Hambleton, Oregon Registered Land Surveyor No. 645, of 18483 West Campbell Loop, Baker City Oregon 97814 and Phone Number 541-524-1256, have made the following survey at the request of Phillip Wirth of High Bar Mining LLC for the purpose of correctly locating property lines and corners of their mining property located on Pine Creek near the Hereford Valley to enable better control of their mining operations.

The original GLO survey made by Henry Meldrum, Deputy Surveyor, was only the south twelve sections of T 12 S, R 39 E, and being under contract No. 226, dated May 29, 1875. The remaining portion of T 12 S, R 39 E was later surveyed by Reuben R. Leigh, Deputy Surveyor, under contract No. 462, dated April 11, 1883.

Using public and private records, I made the forgoing survey using a TOPCON-XT Global Positioning System to accomplish the fieldwork. The meridian used for this survey was based on a two mile straight line between two section corners, being between the section corner common to Sections 25, 26, 35 and 36, and the section corner common to Sections 13, 14, 23 and 24, T 12 S, R 39 E W.M. I used an assumed bearing of N 00° 00' 00" E on said line, being between the section corner common to Sections 25, 26, 35 and 36, and the section corner common to Sections 13, 14, 23 and 24, T 12 S, R 39 E W.M. Making this assumption gave me a common meridian as my work was overlapping both the Henry Meldrum and Reuben R. Leigh surveys. I made no attempt to rotate any bearings as I felt this would only add confusion to the equation. Through an exhaustive search I recovered all of the original corners needed to complete this survey. After completing the initial fieldwork, I then marked the desired lines with wooden lath and ribbon. I then set permanent monumentation for all corners involved in this survey. Corners are set as shown on this map. The original GLO land corners are described in more detail on the Certified Record of Land Corner Monumentation sheets filed separately in the Baker County Surveyor's office.



LEGEND	
	Found original Section Corner in place. I monumented with a stamped 2 1/2 inch brass cap on a 1 inch galvanized iron pipe, flared and buried to within 8 inches above the ground surface, with reference accessories. Record of land corner monumentation is filed with Baker County Surveyor.
	Found original Quarter Corner in place. I monumented with a stamped 2 1/2 inch brass cap on a 1 inch galvanized iron pipe, flared and buried to within 8 inches above the ground surface, with reference accessories. Record of land corner monumentation is filed with Baker County Surveyor.
	Found permanent monument at original corner location, set by others in recent years, as shown on the map.
	I set an appropriately stamped 2 inch Aluminum cap placed on a 5/8\" x 30\" iron rebar pin, driven to within 6 inches above the ground surface, in a mound of stone when stone was available.
	No corner was found or set at this location during this survey.
	Henry Meldrum's record bearings and distances of his 1875 GLO Survey.
	Reuben R. Leigh's record bearings and distances of his 1883 GLO Survey.

REGISTERED PROFESSIONAL LAND SURVEYOR

 OREGON
 JAMES H. HAMBLETON
 JULY 10, 1964
 LICENSE # 645

EXPIRES: June 30, 2014

FILED Sept. 27, 2012
 BAKER COUNTY SURVEYOR
 SURVEY NO. 12-39-50

12-39-50