

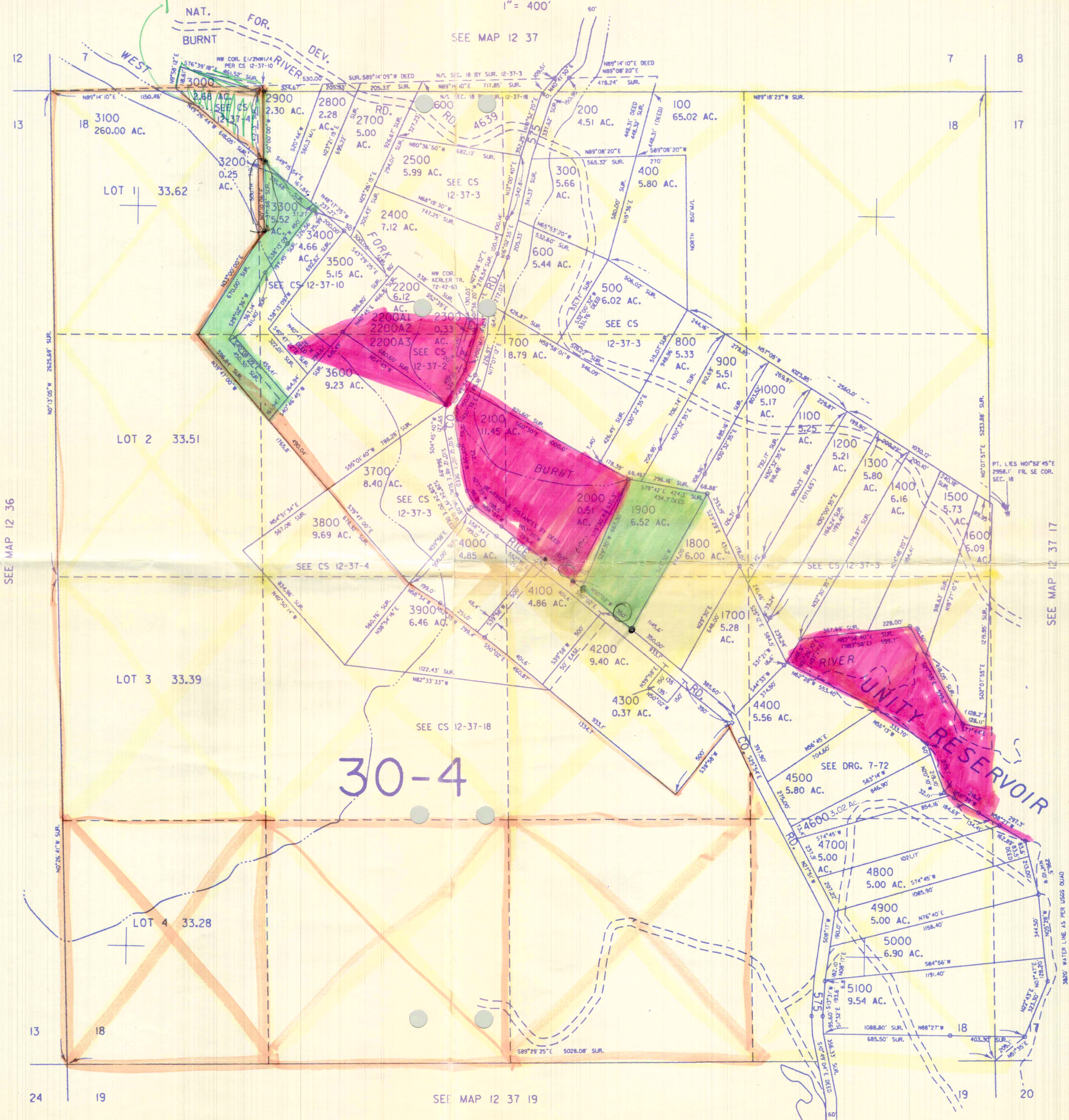
THIS MAP WAS PREPARED FOR ASSESSMENT PURPOSE ONLY

SECTION 18 T.12S. R.37E. W.M. BAKER COUNTY

12 37 18

1" = 400'

SEE MAP 12 37



SEE MAP 12 36

SEE MAP 12 37 17

SEE MAP 12 37 19

2.592,000

319,000

12 37 18