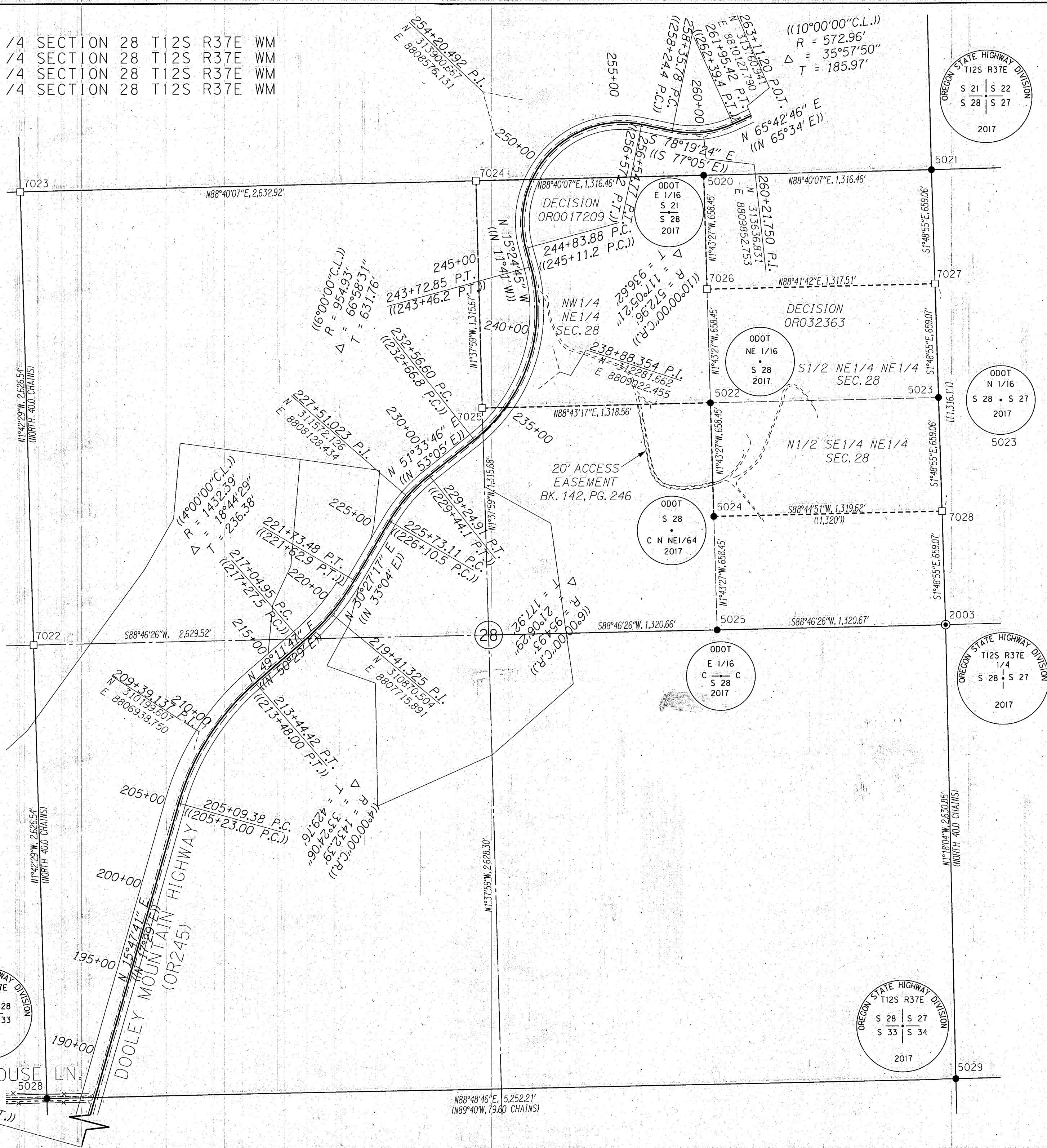
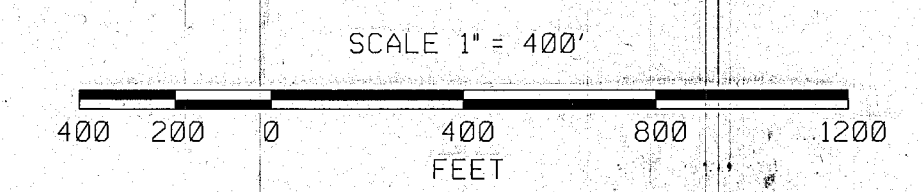


NE 1/4 SECTION 28 T12S R37E WM
 NW 1/4 SECTION 28 T12S R37E WM
 SE 1/4 SECTION 28 T12S R37E WM
 SW 1/4 SECTION 28 T12S R37E WM



LEGEND

- SET MONUMENT AS NOTED IN TABLE ON SHEET 1
- FOUND MONUMENT AS NOTED IN TABLE ON SHEET 1
- ⊙ FOUND STONE REPLACED WITH MONUMENT AS NOTED IN TABLE ON SHEET 1
- CALCULATED POINT, NOTHING FOUND OR SET, SEE TABLE ON SHEET 1
- (()) RECORD DATA PER ODOT DRG. NO. 5B-9-25
- [[]] RECORD DATA PER ODOT DRG. NO. 1R-2-1706
- - - - - EXISTING FENCE
- - - - - EDGE OF GRAVEL
- - - - - EDGE OF PAVEMENT
- - - - - RESOLVED HIGHWAY CENTER LINE
- - - - - ODOT LEASE BOUNDARY
- - - - - EXISTING EASEMENT



REGISTERED PROFESSIONAL LAND SURVEYOR

BEC
 OREGON
 JAN. 14, 2003
 BRET N. ELITHORP
 *63148

RENEWS: DEC. 31, 2017

OREGON DEPARTMENT OF TRANSPORTATION

BOUNDARY SURVEY
 UNITY RESERVOIR QUARRY
 DOOLEY MOUNTAIN HIGHWAY
 BAKER COUNTY

FILED *May 17, 2017*

ODOT REGION 5
 3012 ISLAND AVENUE
 LA GRANDE, OR 97850

BAKER COUNTY SURVEY
 SURVEY NO. *12-36-10*
12-31-98

APRIL 11, 2017
 SCALE: 1"=400'
 SHEET 3 OF 3

OREGON STATE HIGHWAY DIVISION
 T12S R37E
 S 29 | S 28
 S 32 | S 33
 2017

OREGON STATE HIGHWAY DIVISION
 T12S R37E
 S 28 | S 27
 S 33 | S 34
 2017

OREGON STATE HIGHWAY DIVISION
 T12S R37E
 S 21 | S 22
 S 28 | S 27
 2017

OREGON STATE HIGHWAY DIVISION
 T12S R37E
 1/4
 S 28 | S 27
 2017

ROUSE LN.
 5028
 ((88+33.500 P.T.))
 N 298551.042
 E 8803643.697