

NE 1/4 SECTION 31 T12S R37E WM
 NW 1/4 SECTION 31 T12S R37E WM
 SE 1/4 SECTION 31 T12S R37E WM
 SW 1/4 SECTION 31 T12S R37E WM

T12S
R36E R37E
S 25 | S 30
S 36 | S 31
PLS 1106
1987

OREGON STATE HIGHWAY DIVISION
T12S R37E
S 19 | S 20
S 30 | S 29
PLS 63148
2014

OREGON STATE HIGHWAY DIVISION
T12S R37E
S 29
S 32
2016

OREGON STATE HIGHWAY DIVISION
T12S R36E R37E
S 36 | S 31
PLS 63148
2014

T12S
R36E R37E
S 36 | S 31
S 1 | S 6
PLS 63148
2014

FOUND 2-1/2" ALUMINUM CAP
UP 0.8 FT. MARKED AS SHOWN
NW CORNER SECTION 31
SURVEY NO. 12-36-30
4/23/13

1003
FOUND 14"x12"x6" STONE, FLUSH,
WITH 5 NOTCHES ON EAST FACE
AND 2 NOTCHES ON SOUTH FACE
NE CORNER SEC. 30
8/23/14
REPLACED WITH 5/8"x30" IRON ROD
WITH 3-1/4" ALUMINUM CAP
MARKED AS SHOWN
SET ON 10/1/2014

SET 5/8" IRON ROD
WITH 3-1/4" ALUMINUM CAP
MARKED AS SHOWN
(SET CONCURRENTLY WITH
BOUNDARY SURVEY FILED FOR
UNITY RESERVOIR QUARRY)

1002
FOUND 14"x11"x6" STONE
MARKED "1/4"
3/25/14
REPLACED WITH 5/8" IRON ROD
WITH 3-1/4" ALUMINUM CAP
MARKED AS SHOWN
SET ON 10/1/2014

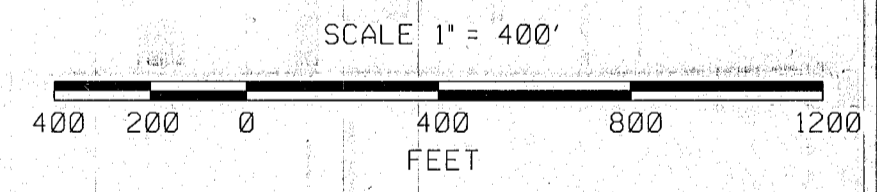
5026
SET 5/8"x30" IRON ROD
WITH 3-1/4" ALUMINUM CAP
MARKED AS SHOWN
SET ON 3/27/17
(SET CONCURRENTLY WITH
BOUNDARY SURVEY FILED FOR
UNITY RESERVOIR QUARRY)

LEGEND

- SET 5/8" X 30" IRON REBAR WITH ALUMINUM CAP MARKED "ODOT" UNLESS OTHERWISE NOTED
- FOUND MONUMENT
- ⊙ FOUND STONE REPLACED WITH MONUMENT AS NOTED
- CALCULATED POSITION-NOTHING FOUND NOTHING SET
- () RECORD DATA PER GLO FIELDNOTES
- [] RECORD DATA PER ODOT DRG. NO. 1R-2-1439
- (()) RECORD DATA PER ODOT DRG. NO. 2B-23-19
- [[]] RECORD DATA PER ODOT DRG. NO. 6B-34-4
- EXISTING RIGHT-OF-WAY
- EDGE OF PAVEMENT
- ODOT PROPERTY BOUNDARY
- EDGE OF GRAVEL
- - - ODOT LEASE BOUNDARY
- X- FENCE

CONTROL NARRATIVE

PRIMARY CONTROL WAS ESTABLISHED ON THIS PROJECT BY USING GPS AND THE ONLINE POSITIONING USER SERVICE (OPUS) TO ESTABLISH A POSITION ON POINT L385. A SUBSEQUENT RTK GPS SURVEY WAS PERFORMED USING L385 AS A BASE POINT TO ESTABLISH POSITIONS ON ALL OF THE FOUND MONUMENTS SHOWN ON THIS SURVEY. THE BEARINGS SHOWN ON THIS SURVEY ARE GRID BEARINGS BASED ON THE OREGON STATE PLANE COORDINATE SYSTEM, NAD83 (2011) EPOCH 2010. COORDINATES WERE MOVED TO GROUND BY UTILIZING A LOCAL DATUM PLANE (LDP) COORDINATE SYSTEM. TO CONVERT THE PROJECT LDP COORDINATES TO THE OREGON COORDINATE SYSTEM, NORTH ZONE, NAD83 (2011) EPOCH 2010, MULTIPLY THE VALUES BY A COMBINED FACTOR OF 0.99977943.




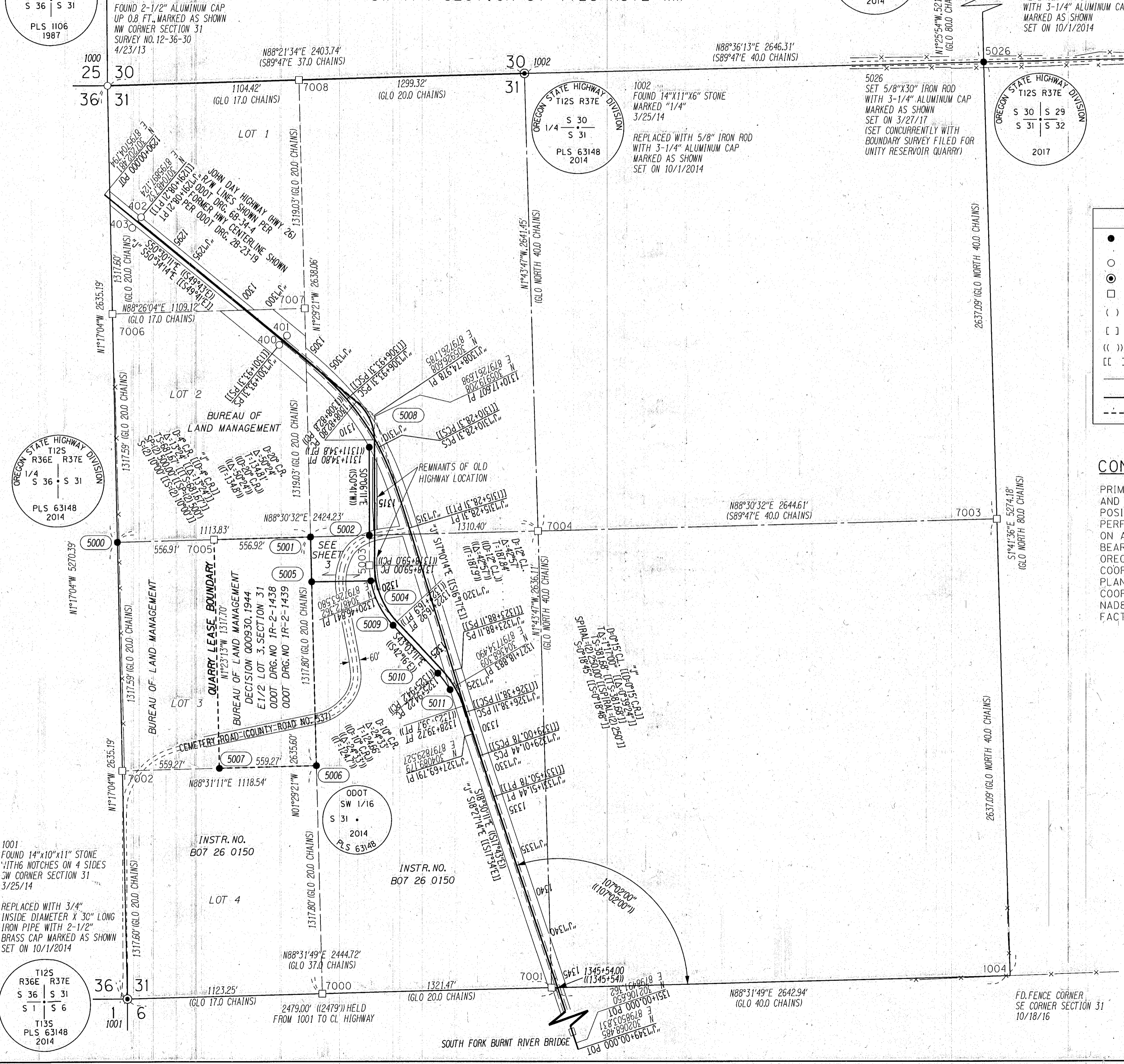
REGISTERED
PROFESSIONAL
LAND SURVEYOR

Boc
OREGON
JAN. 14, 2003
BRET N. ELITHORP
#63148

RENEWS: DEC. 31, 2017

FILED May 17, 2017
BAKER COUNTY SURVEYOR
SURVEY NO. 12-36-69
12-37-95

OREGON DEPARTMENT OF TRANSPORTATION

 AMENDED MAP OF SURVEY
 SECTION 31, T12S, R37E, W.M.
 BAKER COUNTY
 MATERIAL SOURCE AND STOCKPILE
 APRIL 11, 2017
 SCALE: 1"=400'
 BEARINGS: GRID
 SHEET 2 OF 3



1001
FOUND 14"x10"x11" STONE
WITH 6 NOTCHES ON 4 SIDES
SW CORNER SECTION 31
3/25/14
REPLACED WITH 3/4"
INSIDE DIAMETER X 30" LONG
IRON PIPE WITH 2-1/2"
BRASS CAP MARKED AS SHOWN
SET ON 10/1/2014

ODOT
SW 1/16
S 31
PLS 63148
2014

INSTR. NO.
B07 26 0150

INSTR. NO.
B07 26 0150

FD. FENCE CORNER
SE CORNER SECTION 31
10/18/16

SOUTH FORK BURNT RIVER BRIDGE