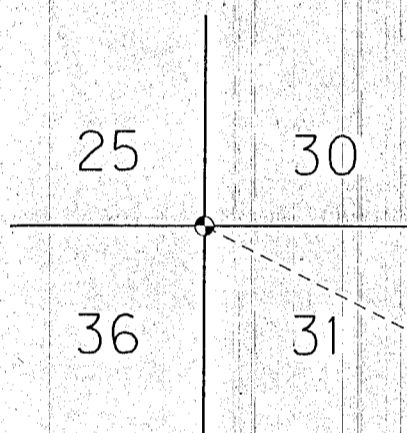
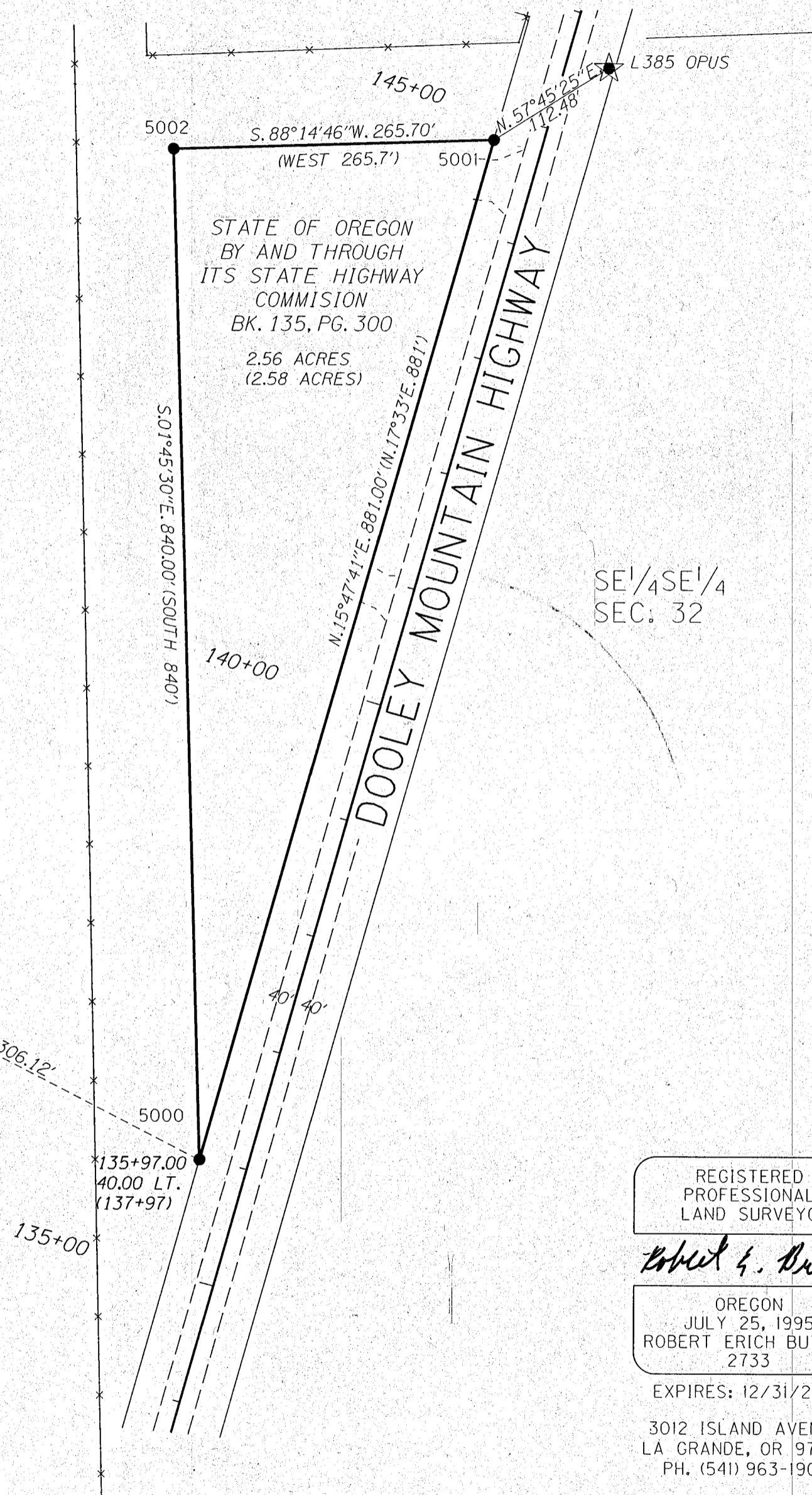


SITUATED IN THE SE¹/₄ OF THE SE¹/₄ OF SEC. 32, T. 12 S., R. 37 E., WM.
BAKER COUNTY, OREGON



FND, 3" ALUM. DISK ON 2.75" PIPE, 12" ABOVE GRND STAMPED, "T12S, R36E:R37E, S25,S30,S36,S31, PLS 1106, 1987" N. 307,829.91 E. 8,795,721.75

SW¹/₄SE¹/₄ SEC. 32



NARRATIVE

THE PURPOSE OF THIS SURVEY IS TO MONUMENT THE PROPERTY BOUNDARY OF THE UNITY STOCKPILE SITE ON THE DOOLEY MOUNTAIN HIGHWAY FOR THE OREGON DEPARTMENT OF TRANSPORTATION (ODOT). FOR THIS PURPOSE WE RECOVERED MONUMENTS, RESOLVED RIGHT OF WAY (RW) FOR A PORTION OF THE DOOLEY MOUNTAIN HIGHWAY AND SET BOUNDARY MONUMENTS AT SAID STOCKPILE SITE. THE LAST MONUMENT FOR THIS SURVEY WAS SET ON NOVEMBER 20, 2013.

THE DOOLEY MOUNTAIN HIGHWAY RW CENTER LINE WAS RE-ESTABLISHED USING ODOT DRAWINGS 1B-27-5 AND 1R-1-764. NO MONUMENTS WERE FOUND TO SUSTANTIATE CENTER LINE. THE HIGHWAY CENTER LINE WAS RE-ESTABLISHED USING THE ROAD AS A MONUMENT. THE POINT OF INTERSECTION (PI) WAS ESTABLISHED AT THE INTERSECTION OF TANGENTS FROM OF THE JOHN DAY AND THE DOOLEY MOUNTAIN HIGHWAYS. THE DELTA ANGLE AT THIS PI MEASURED 36°51'40" VERSUS THE RECORD OF 36°33' FROM DRAWING 1R-4-764. THE RECORD 8° DEGREE OF CURVE WAS USED TO ESTABLISH THE POINT OF TANGENCY (PT) FOR THE CURVE, USING THE RECORD STATION OF 88+33.5.

THE BASIS OF BEARING WAS ESTABLISHED BY GPS USING AN OPUS SOLUTION AT POINT L385_OPUS, WHICH IS A BRASS DISK THAT BEARS N.57°45'25"E. 112.48' FROM POINT 5001. THIS SURVEY UTILIZES A LOCAL DATUM PLANE (LDP) WHICH IS RELATIVE TO THE OREGON COORDINATE SYSTEM OF NAD83(2011) (EPOCH 2010), NORTH ZONE, WITH RESPECT TO THE LOCAL LATITUDE AND GROUND ELEVATION. THE LDP COORDINATES DEFINE TRUE GROUND DISTANCES. TO CONVERT THE LDP COORDINATES FOR THE CONTROL POINTS TO THE OREGON COORDINATE SYSTEM OF NAD83(2011) (EPOCH 2010), NORTH ZONE, MULTIPLY THE LDP COORDINATES BY 0.999779429.

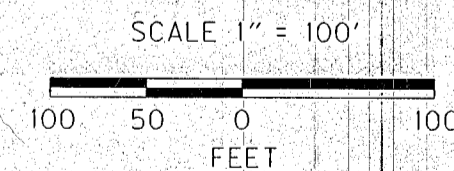
REFERENCES

- BOOK 135, PAGE 300, BAKER COUNTY DEED RECORDS
- OREGON DEPT. OF TRANS. RW FILE S1105
- OREGON DEPT. OF TRANS. RW FILE J1276
- OREGON DEPT. OF TRANS. DRAWING 1R-1-764
- OREGON DEPT. OF TRANS. DRAWING 1R-2-1436
- OREGON DEPT. OF TRANS. DRAWING 1B-27-5

LEGEND

- SET POINTS AS NOTED
- FOUND MONUMENT AS NOTED
- [] RECORD DATA FROM 1931 GLO SURVEY
- () RECORD DATA PER BOOK 135, PAGE 300, BAKER COUNTY DEED RECORDS
- EXISTING RIGHT-OF-WAY
- QUARRY BOUNDARY
- x- FENCE

REGISTERED PROFESSIONAL LAND SURVEYOR
Robert E. Butler
OREGON
JULY 25, 1995
ROBERT ERICH BUTLER
2733
EXPIRES: 12/31/2017
3012 ISLAND AVENUE
LA GRANDE, OR 97850
PH. (541) 963-1908



SET & FOUND MONUMENT LIST

PT. NO.	LDP NORTHING	LDP EASTING	STATION	OFFSET	DESCRIPTION & REFERENCE DOCUMENTS
5000	303,145.57	8,804,901.79	135+97.00	40.00 LT.	SET 5/8" X 30" IRON ROD W/1/4" ALUMINUM CAP MARKED PLS2733
5001	303,993.31	8,805,141.59	144+78.00	40.00 LT.	SET 5/8" X 30" IRON ROD W/1/4" ALUMINUM CAP MARKED PLS2733
5002	303,985.18	8,804,876.02	143+97.89	293.33 LT.	SET 5/8" X 30" IRON ROD W/1/4" ALUMINUM CAP MARKED PLS2733
OPUS	304,053.32	8,805,236.73	145+61.64	35.21 LT.	FND BRASS DISK; L385 1944 U.S. COAST & GEODETIC SURVEY BENCH MARK

NOV 15, 2016
BAKER COUNTY SURVEYOR
SURVEY NO. 12-37-94

OREGON DEPARTMENT OF TRANSPORTATION
HEREFORD (UNITY) STORAGE SITE BOUNDARY SURVEY
LOCATED IN THE SE QUARTER OF
SECTION 32, T. 12 S., R. 37 E., W.M.
DOOLEY MOUNTAIN HIGHWAY
BAKER COUNTY, OREGON

FOR ODOT REGION 5
3012 ISLAND AVENUE
LA GRANDE, OR 97850

FEBRUARY, 2014
SCALE: 1" = 100'
SHEET 1 OF 1