

PHOTOGRAMMETRIC CONTROL SURVEY
 FOR
 DAVID C. SMITH & ASSOCIATES, INC.
 OF
 UNITY RESERVOIR

SITUATED IN SECTIONS 17,18,19,20,21,28,29,30,31,32
 TOWNSHIP 12 SOUTH AND RANGE 37 EAST OF THE
 WILLAMETTE MERIDIAN

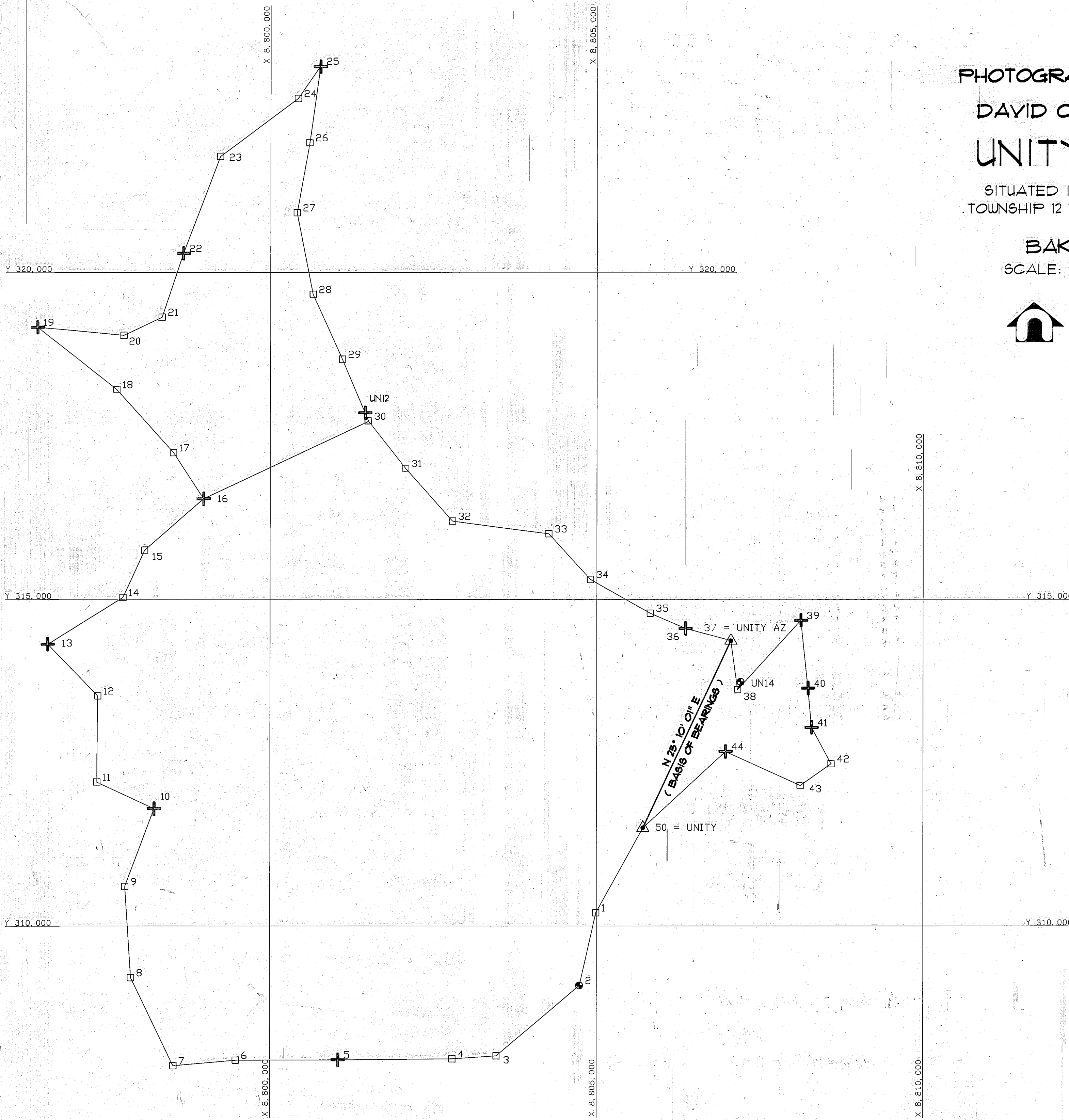
BAKER COUNTY, OREGON

SCALE: 1"=1000'

OCTOBER, 1991



DAVID EVANS AND ASSOCIATES, INC.
 2828 S.W. CORBETT AVENUE
 PORTLAND, OREGON 97201
 (503) 223-6663



REGISTERED
 PROFESSIONAL
 LAND SURVEYOR

Kenneth M. Wightman

OREGON
 JULY 17, 1970
 KENNETH M. WIGHTMAN II
 942

11/4/91

LEGEND:

- ▲ = BUREAU OF RECLAMATION GPS POINT
- = BENCHMARK
- ⊕ = PHOTOGRAMMETRIC CONTROL POINT
- = TRAVERSE POINT SET 5/8" X 3/32" IRON ROD WITH PLASTIC CAP STAMPED "DEA INC."

SEE SHEET 2 FOR COORDINATE INFORMATION

FILED NOV. 12, 1991

BAKER COUNTY SURVEYOR

SURVEY NO. 12-37-65