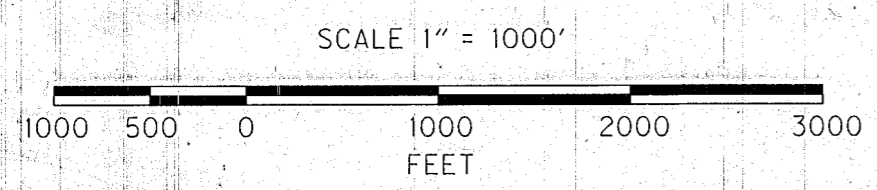
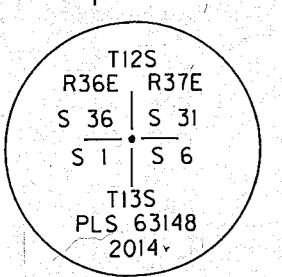
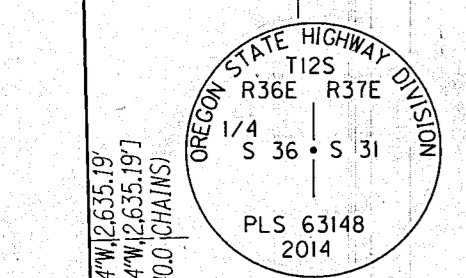
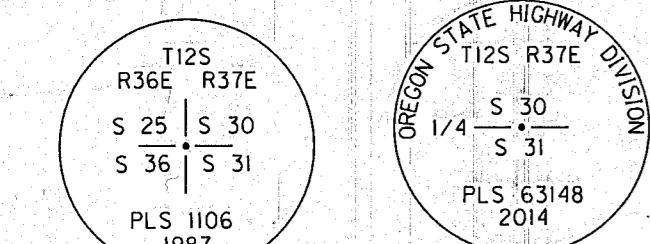
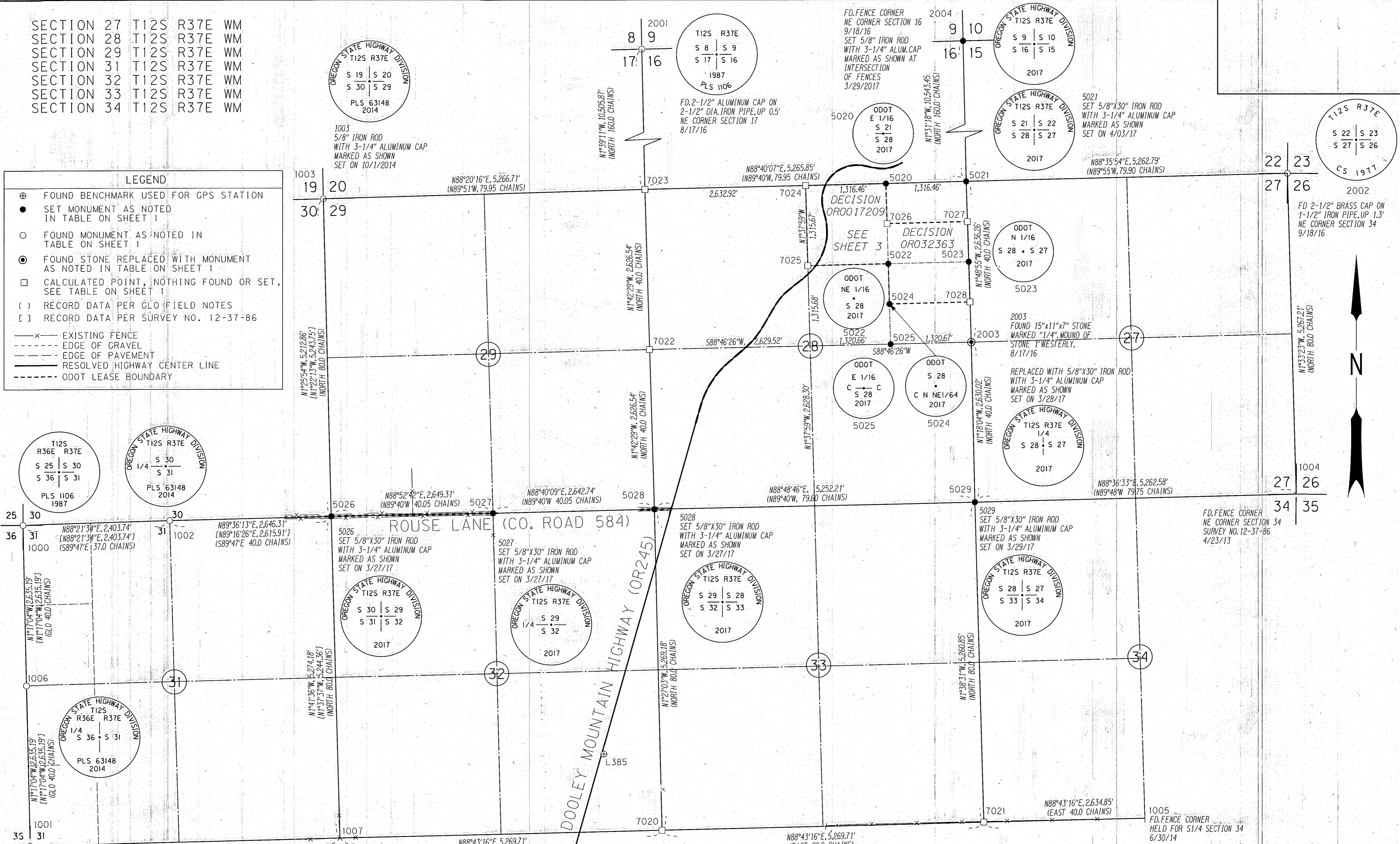


SECTION 27 T12S R37E WM
 SECTION 28 T12S R37E WM
 SECTION 29 T12S R37E WM
 SECTION 31 T12S R37E WM
 SECTION 32 T12S R37E WM
 SECTION 33 T12S R37E WM
 SECTION 34 T12S R37E WM

LEGEND

- ⊕ FOUND BENCHMARK USED FOR GPS STATION
- SET MONUMENT AS NOTED IN TABLE ON SHEET 1
- FOUND MONUMENT AS NOTED IN TABLE ON SHEET 1
- ⊙ FOUND STONE REPLACED WITH MONUMENT AS NOTED IN TABLE ON SHEET 1
- CALCULATED POINT, NOTHING FOUND OR SET, SEE TABLE ON SHEET 1
- () RECORD DATA PER GLO FIELD NOTES
- [] RECORD DATA PER SURVEY NO. 12-37-86

- x- EXISTING FENCE
- - - EDGE OF GRAVEL
- - - EDGE OF PAVEMENT
- - - RESOLVED HIGHWAY CENTER LINE
- - - ODOT LEASE BOUNDARY



REGISTERED PROFESSIONAL LAND SURVEYOR
Bret N. Elithorp
 OREGON JANUARY 14, 2003
 BRET N. ELITHORP 63148
 EXPIRES: DEC. 31, 2017

OREGON DEPARTMENT OF TRANSPORTATION

BOUNDARY SURVEY
 UNITY RESERVOIR QUARRY
 DOOLEY MOUNTAIN HIGHWAY
 BAKER COUNTY

ODOT REGION 5
 3012 ISLAND AVENUE
 LA GRANDE, OR 97850

APRIL 11, 2017
 SCALE: 1"=1000'
 SHEET 2 OF 3

FILED *Maunula* 2017
 BAKER COUNTY SURVEYOR
 SURVEY NO. 12-36-70
 12-37-98