

**NARRATIVE OF SURVEY**

This survey was performed at the request of Mr. Dan Forsea. The purpose of the survey was to locate the boundaries of the land shown in the detail on this map and to show the related building setbacks.

The land shown in the detail is one of the remaining pieces of Government Lot 5 of Section 19 as shown that existed after the condemnation as recorded in Book 168 at Page 309 of the Baker County deed records.

Prior to the condemnation this section was surveyed by L. G. Burnap for Idaho Power Company. It is apparent that the legal description in the condemnation document was prepared from the Burnap survey, however, the survey or its monuments are not called for in the condemnation description.

The legal description calls for the boundary to follow the 2085 ft. mean sea level contour. Mr. Burnap traversed a line that he shows as that contour on his map and he set monuments on the section lines where his traverse crossed them. These monuments differ in elevation by approximately 9 feet.

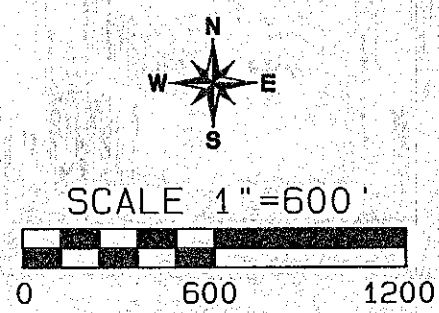
Mr. Burnap established the west line of Lots 5 through 7 and the NE 1/4 of the NE 1/4 as a straight line between the east 1/16th on the north section line and the east 1/16th on the south section line. According to the Oregon State Office of the BLM this procedure is especially appropriate when there is original measurement error on the section exterior. This line was accepted and used by the U.S. District Court for Oregon in the condemnation proceeding and I therefore considered it as fixed in position by that action.

I established the positions for the monuments I set in this survey in the following way: I held Mr. Burnap's position for the NE corner of the section and computed its location by projecting a line from the north 1/4 corner through the north Burnap meander corner his record distance. I computed the S.E. section meander corner by projecting a line from the south 1/4 corner through the south Burnap meander corner the record GLO distance. I then computed a weighted mean bearing for the east west center section line using the entire north and south section lines. I computed the location of the east 1/16th on the north section line at midpoint between the 1/4 and the N.E. corner. I computed the east 1/16th on the south section line at a distance of 1320' easterly of the south 1/4 corner.

Because of the elevation discrepancy between the Burnap meander monuments I held the record alignment for this line as described in the condemnation document. I computed the record location beginning at the east 1/16th on the south section line and I treated the line shown as L53 as a closing line as called for in the deed and closed on the north Burnap meander monument.

The high water line as shown on this map is the actual high water line of the reservoir. This line is clearly demarcated by the mineral deposits on the stones in the area.

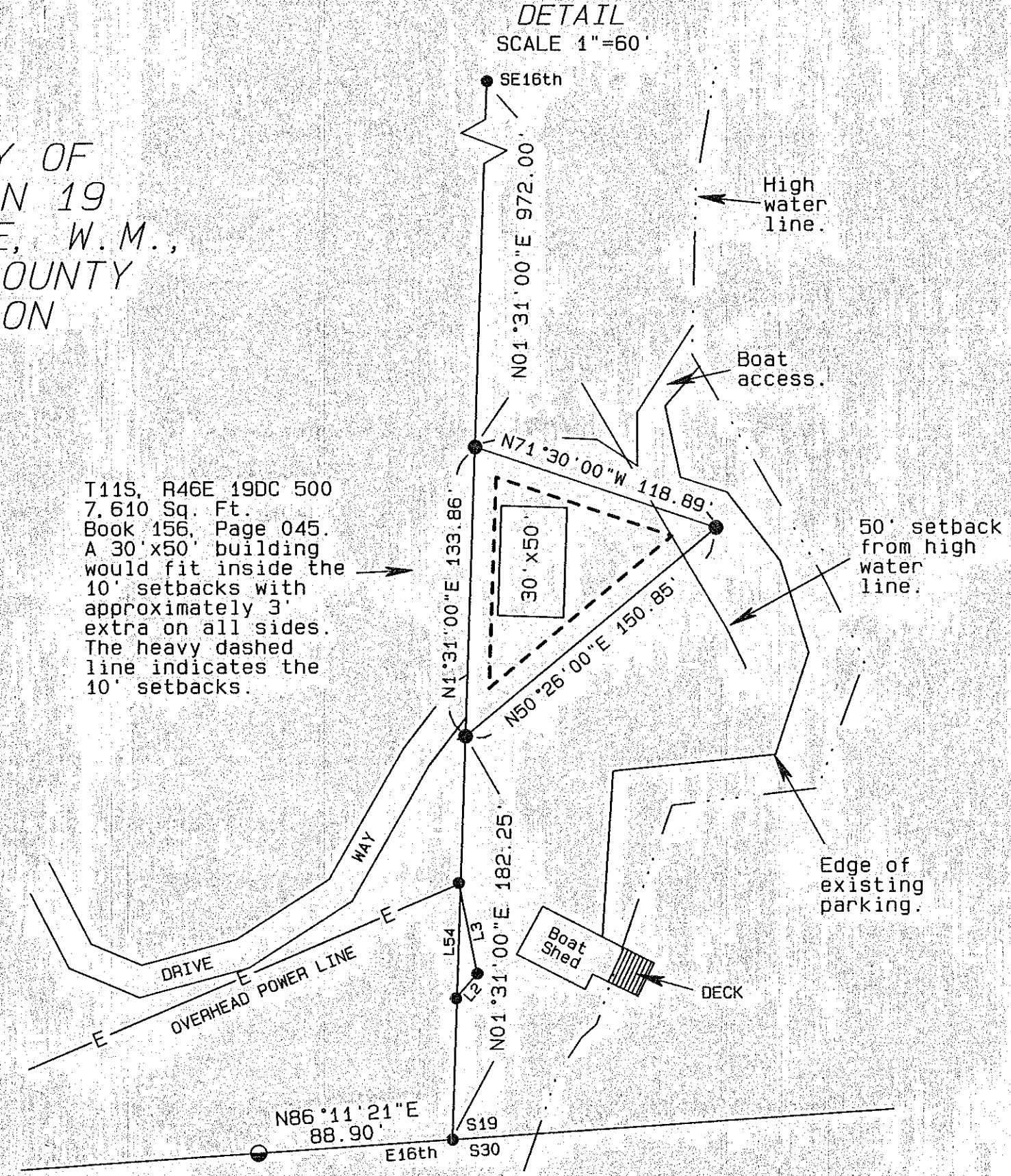
**SURVEY OF SECTION 19 T11S, R46E, W.M., BAKER COUNTY OREGON**



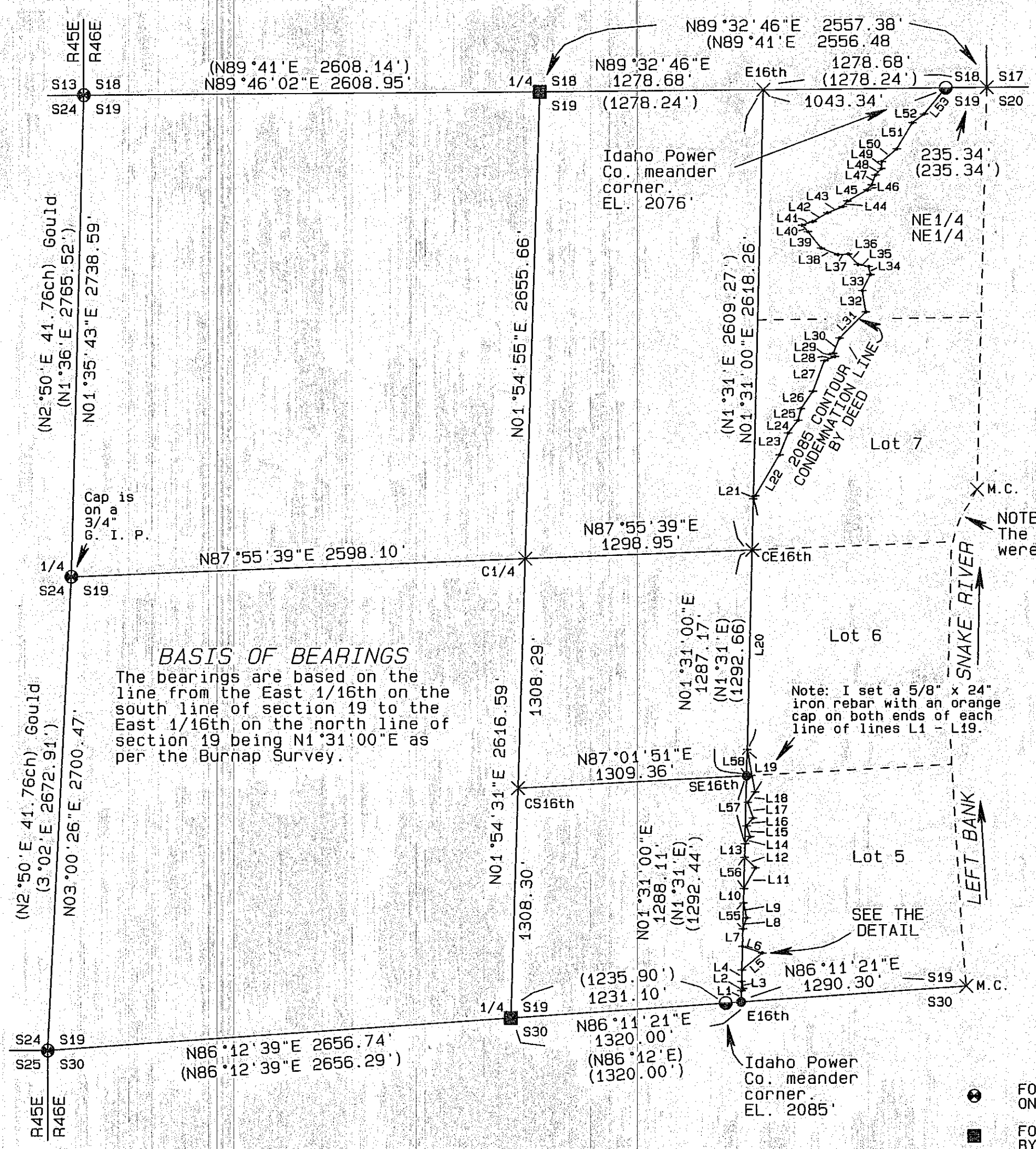
**LEGEND**

- FOUND A 2 1/2" BRASS CAP ON A 2" G.I.P. BY GOULD
- FOUND ORIGINAL STONE BY RUEBEN LEIGH
- FOUND A 2" BRASS CAP ON A 2" G.I.P. BY L. G. BURNAP
- × COMPUTED POINT
- ⊕ CALCULATED ANGLE POINT IN THE 2085 CONTOUR ALIGNMENT
- SET A 5/8" x 24" IRON REBAR W/ A 1/8" ORANGE PLASTIC CAP STAMPED 56295LS AND WTS
- R1 IDAHO POWER CO. SURVEY D-BR-69 DATED JULY 8, 1957 BY L. G. BURNAP
- R2 OTIS GOULD, CONTRACT No. 219 DATED 3-25-1938
- R3 RUEBEN LEIGH, CONTRACT No. 489 DATED 8-15-1883

REGISTERED PROFESSIONAL LAND SURVEYOR  
**Stephen K. Haddock**  
 OREGON  
 JULY 9, 2001  
 STEPHEN K. HADDOCK  
 56295LS  
 RENEWS 6-30-03



T11S, R46E 19DC 500  
 7,610 Sq. Ft.  
 Book 156, Page 045.  
 A 30'x50' building would fit inside the 10' setbacks with approximately 3' extra on all sides. The heavy dashed line indicates the 10' setbacks.



**BASIS OF BEARINGS**  
 The bearings are based on the line from the East 1/16th on the south line of section 19 to the East 1/16th on the north line of section 19 being N1°31'00"E as per the Burnap Survey.

**LINE TABLE**

NOTE: The dimensions for lines L1 - L53 are for the condemnation line as shown above. I held the record alignment from the condemnation deed as recorded in Book 168 at Page 309 of the deed records of Baker County. The distances in the deed were more or less so I gave more weight to the bearings and held the last course as a closing line closing on the North line of S19. Distances shown are U.S. survey feet. Line L53 is a calculated closing distance.

L1	N01°31'00"E	64.29	L21	N34°20'00"E	21.22	L41	N71°16'00"E	63.50
L2	N41°02'00"E	14.88	L22	N30°46'00"E	269.50	L42	N59°13'00"E	98.00
L3	N11°30'00"W	42.04	L23	N22°08'00"E	134.00	L43	N68°33'00"E	94.60
L4	N01°31'00"E	65.52	L24	N37°59'00"E	92.40	L44	N40°28'00"E	42.00
L5	N50°26'00"E	150.85	L25	N13°50'00"E	68.00	L45	N60°50'00"E	129.60
L6	N71°30'00"W	118.89	L26	N35°18'00"E	119.30	L46	N41°05'00"E	38.50
L7	N01°31'00"E	100.86	L27	N20°48'00"E	186.00	L47	N21°54'00"E	60.00
L8	N18°17'00"E	65.87	L28	N67°43'00"E	64.30	L48	N42°25'00"E	49.50
L9	N11°10'00"W	86.54	L29	N26°39'00"W	20.00	L49	N04°14'00"E	40.00
L10	N01°31'00"E	82.24	L30	N22°21'00"E	93.80	L50	N49°48'00"E	111.80
L11	N29°50'00"E	134.55	L31	N45°22'00"E	211.60	L51	N31°08'00"E	174.00
L12	N45°57'00"E	86.61	L32	N09°08'00"W	122.00	L52	N53°29'00"E	82.20
L13	N01°31'00"E	77.76	L33	N27°12'00"E	102.90	L53	N40°03'37"E	192.96
L14	N36°54'00"E	49.35	L34	N13°05'00"W	47.60	(L53)	N40°19'00"E	192.20
L15	N19°03'00"W	64.50	L35	N79°37'00"W	62.00	L54	N01°31'00"E	52.44
L16	N40°25'00"E	59.10	L36	N42°28'00"W	81.60	L55	N01°31'00"E	147.50
L17	N18°33'00"W	94.00	L37	S87°03'00"W	58.00	L56	N01°31'00"E	177.00
L18	N34°26'00"E	72.60	L38	N69°06'00"W	105.20	L57	N01°31'00"E	386.64
L19	N10°18'00"E	245.11	L39	N38°32'00"W	118.90	L58	N01°31'00"E	149.23
L20	N01°31'00"E	1428.99	L40	N41°43'00"W	50.00			

**SURVEY FOR**  
 Mr. Dan Forsea  
 42070 New Bridge Rd.  
 Richland, Oregon 97870  
 LOCATION: S19, T11S, R46E, W.M.

PROJECT No. 02-08  
 MONUMENTS SET: June 15th, 2002  
**WITNESS TREE SURVEYING**  
 Stephen K. Haddock, PLS  
 P.O. Box G  
 Pilot Rock, Oregon 97868  
 (541) 443-2922