








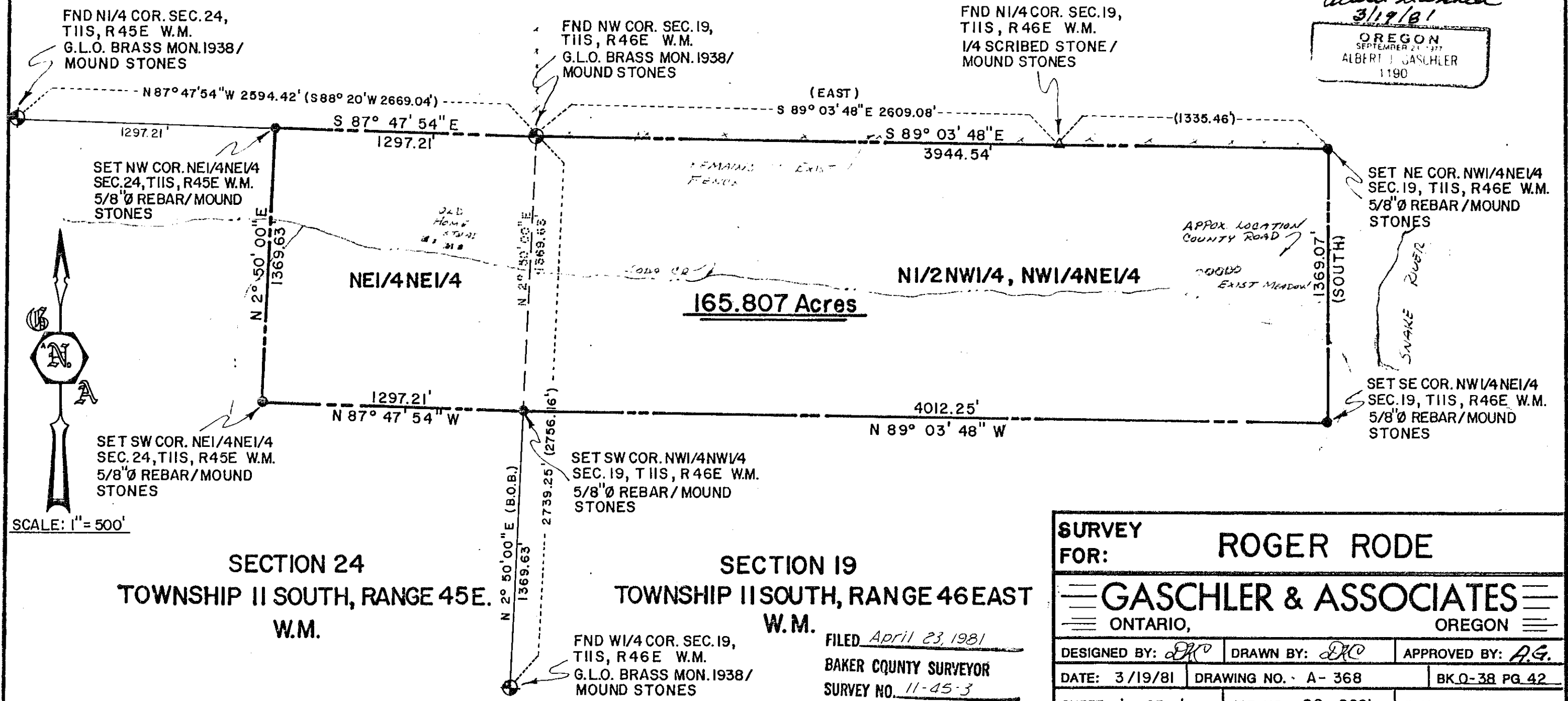
LEGEND

- BOUNDARY LINE 
- SECTION LINE 
- DISTANCE LINE 
- FOUND G.L.O. BRASS MON. 
- SET 5/8" Ø REBAR 
- FOUND SCRIBED STONE 
- OF RECORD 

CERTIFICATION

I, ALBERT GASCHLER, A REGISTERED PROFESSIONAL LAND SURVEYOR HEREBY CERTIFY THAT ON 3/10/81 A SURVEY WAS STARTED AND COMPLETED ON 3/18/81, OF THE FOLLOWING LANDS TO WIT: (SEE DESCRIPTION) WAS MADE BY ME OR UNDER MY DIRECTIONS, THAT THE PROPERTY CORNERS ARE MARKED AS SHOWN AND THAT THIS MAP IS A TRUE AND ACCURATE REPRESENTATION OF SAID SURVEY.

REGISTERED PROFESSIONAL LAND SURVEYOR
Albert Gaschler
 3/19/81
 OREGON
 SEPTEMBER 21, 1977
 ALBERT J. GASCHLER
 1190



SURVEY FOR: ROGER RODE	
GASCHLER & ASSOCIATES ONTARIO, OREGON	
DESIGNED BY: <i>DK</i>	DRAWN BY: <i>DK</i>
DATE: 3/19/81	APPROVED BY: <i>A.G.</i>
DRAWING NO. A-368	BK O-38 PG 42
SHEET 1 OF 1	JOB NO. 50-0681
REVISED:	

FILED April 23, 1981
 BAKER COUNTY SURVEYOR
 SURVEY NO. 11-45-3
11-46-4A