

RECORD OF SURVEY
SE 1/4 SEC. 20, T.11S., R.43E., W.M.
BAKER COUNTY, OREGON

NARRATIVE

THE PURPOSE OF THIS SURVEY WAS TO RESOLVE THE FIELD LOCATION OF THE RIGHT OF WAY CENTERLINE FOR A PORTION OF OLD U.S. 30 (COUNTY ROAD NO. 539). THIS SURVEY WAS MADE AT THE REQUEST OF BAKER COUNTY AND THE OREGON DEPARTMENT OF TRANSPORTATION TO FACILITATE A FUTURE IMPROVEMENT PROJECT FOR THIS ROAD. ANOTHER PURPOSE OF THIS SURVEY WAS TO PROVIDE FOR THE PERPETUATION OF THE LOCATIONS OF PROPERTY MONUMENTS WHICH MAY BE DISTURBED BY FUTURE CONSTRUCTION IMPROVEMENTS. PERPETUATION OF THE MONUMENT LOCATIONS WAS ACCOMPLISHED BY TIEING THE MONUMENTS TO THE PROJECT CONTROL NETWORK. THIS SURVEY MEETS THE REQUIREMENTS FOR A RECOVERY SURVEY AS OUTLINED IN THE OREGON REVISED STATUTES CHAPTER 209.155.

THIS SURVEY WAS PERFORMED IN METRIC UNITS. TO CONVERT FROM METERS TO U.S. SURVEY FEET, MULTIPLY BY 3.28083333333. TO CONVERT FROM METERS TO INTERNATIONAL FEET, MULTIPLY BY 3.28083989501.

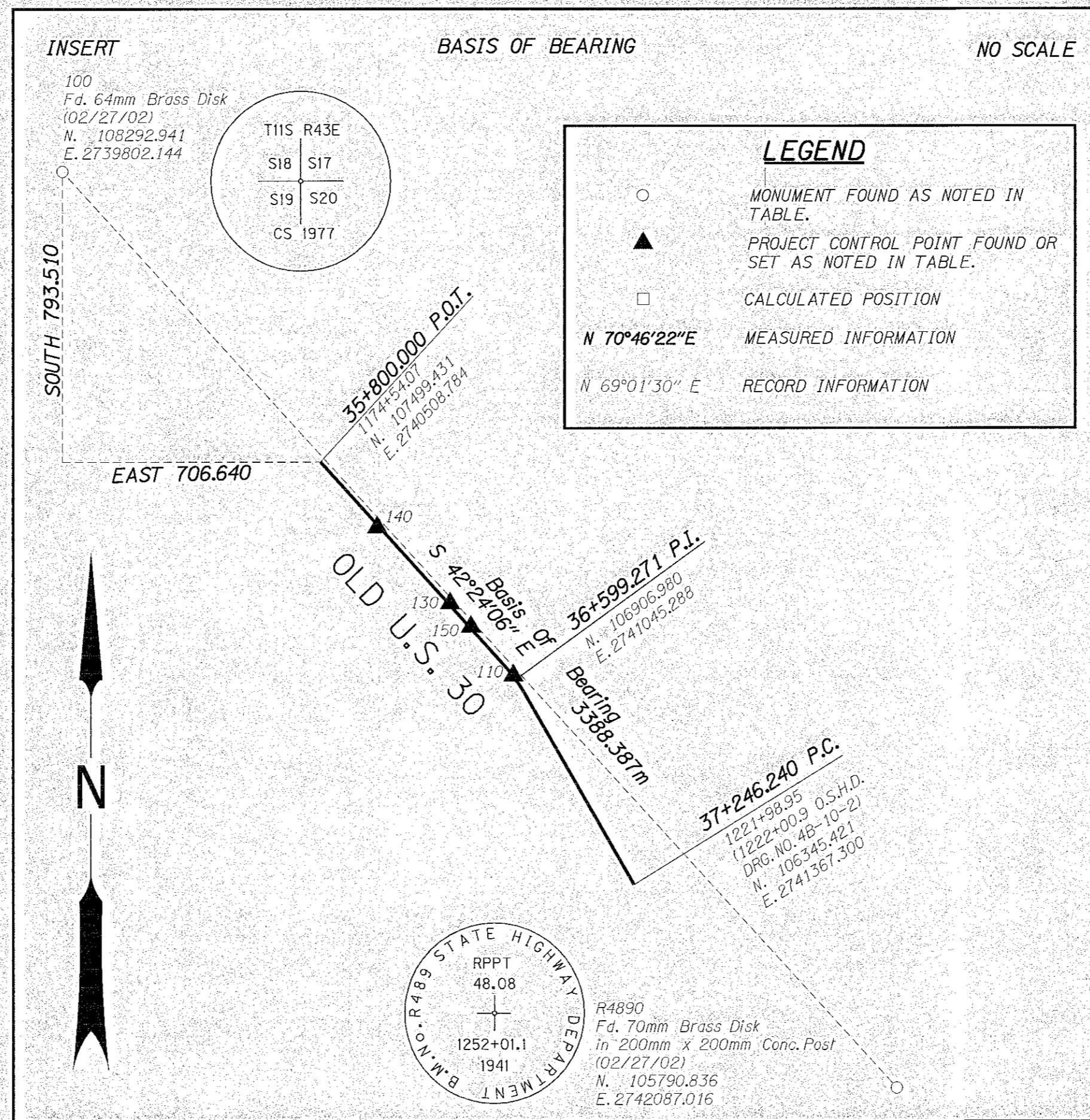
THIS SURVEY UTILIZED A LOCAL DATUM PLANE (LDP) COORDINATE SYSTEM, WHICH IS RELATIVE TO THE OREGON COORDINATE SYSTEM, NORTH ZONE-NAD 83(CORS96) DATUM WITH RESPECT TO LOCAL LATITUDE AND GROUND ELEVATION. TO CONVERT THE LDP COORDINATES TO THE OREGON COORDINATE SYSTEM, NORTH ZONE NAD 83(CORS96), MULTIPLY THE COORDINATE VALUES BY A PROJECT FACTOR OF 0.99982011867.

CONTROL POINTS SET DURING THIS SURVEY WERE NOT SET ON AND DO NOT REPRESENT PROPERTY LINES, OR RIGHT OF WAY LINES AND ARE INTENDED FOR USE BY BAKER COUNTY, THE OREGON DEPARTMENT OF TRANSPORTATION AND OBEC IN SUPPORT OF FUTURE PROJECTS. IT IS NOT THE INTENT OF ANY OF THE ABOVE MENTIONED PARTIES TO PERPETUATE THESE CONTROL POINTS AS MONUMENTS.

THIS SURVEY WAS PERFORMED FROM FEBRUARY 2002 THROUGH MARCH 2002. THE SURVEY EQUIPMENT USED CONSISTED OF TRIMBLE 4400, 4700 GPS RECEIVERS USED IN STATIC MODE AND RTK WITH DATA LOGGING MODE ALONG WITH TRIMBLE TSC1 DATA COLLECTORS. A SOKKIA SET 3BII TOTAL STATION WITH A TRIMBLE TSC1 DATA COLLECTOR WAS USED WHERE GPS COULD NOT BE USED.

OLD U.S. 30 (COUNTY ROAD NO. 539)

THIS RESOLUTION COVERS OLD U.S. 30 (COUNTY ROAD NO. 539) FROM STATION 35+800.000 P.O.T. (1174+54.07) TO STATION 37+246.240 = 1221+98.95 (1222+00.9 O.S.H.D. DRG. NO. 4B-10-2). FOUND OREGON STATE HIGHWAY DEPARTMENT MONUMENTS AT POINTS 504.511 AND 512 WERE USED ALONG WITH RECORD CURVE DATA FROM OREGON STATE HIGHWAY DEPARTMENT DRG. NO. 4B-10-2 (PLEASANT VALLEY-DURKEE SECTION (PART 2)). THIS RESOLUTION FITS WELL WITH THE FOUND MONUMENTS FROM SN 11-43-9, FILED JUNE 12, 2000 IN THE BAKER COUNTY SURVEYOR'S OFFICE AS SHOWN IN THE MONUMENT POINTS TABLE.



Relative property line locations were determined with the following Baker County Record Surveys and Deeds:

S.N. 11-43-9 filed June 12, 2000

ODOT Roll Map 4B-10-2

Book 121, Page 354, recorded November 27, 1935

Book 140, Page 91, recorded August 1, 1946

Deed 78 37 035, recorded September 11, 1978

Deed 79 23 101, recorded June 6, 1979

REGISTERED
 PROFESSIONAL
 LAND SURVEYOR



Wayne R. Donovan

OREGON
 JULY 21, 1992
 WAYNE R. DONOVAN
 2553

RENEWAL DATE: DEC. 31, 2003
 SIGNED: *April 23, 2002*

NOTE:
 ALL DIMENSIONS ARE
 IN METERS EXCEPT
 AS NOTED.



CONSULTING
 ENGINEERS

920 COUNTRY CLUB RD., SUITE 100B
 EUGENE, OREGON 97401
 TEL. (541) 683-6090 FAX. (541) 683-6576

CENTER LINE RESOLUTION,
 MONUMENT RECOVERY AND CONTROL SURVEY
PRITCHARD CREEK BRIDGE SEC.
OLD U.S. 30
 FOR BAKER COUNTY AND
 OREGON DEPARTMENT OF TRANSPORTATION
 MARCH 16, 2002

NO SCALE

DESIGNED: W. DONOVAN	PROJ. NO. 19-66.3	SHT. 1 OF 5
DRAWN: AD	CHK'D: DEW	FILE NO. 11706 S

FILED *May 1, 2002*
 BAKER COUNTY SURVEYOR
 SURVEY NO. 11-43-12