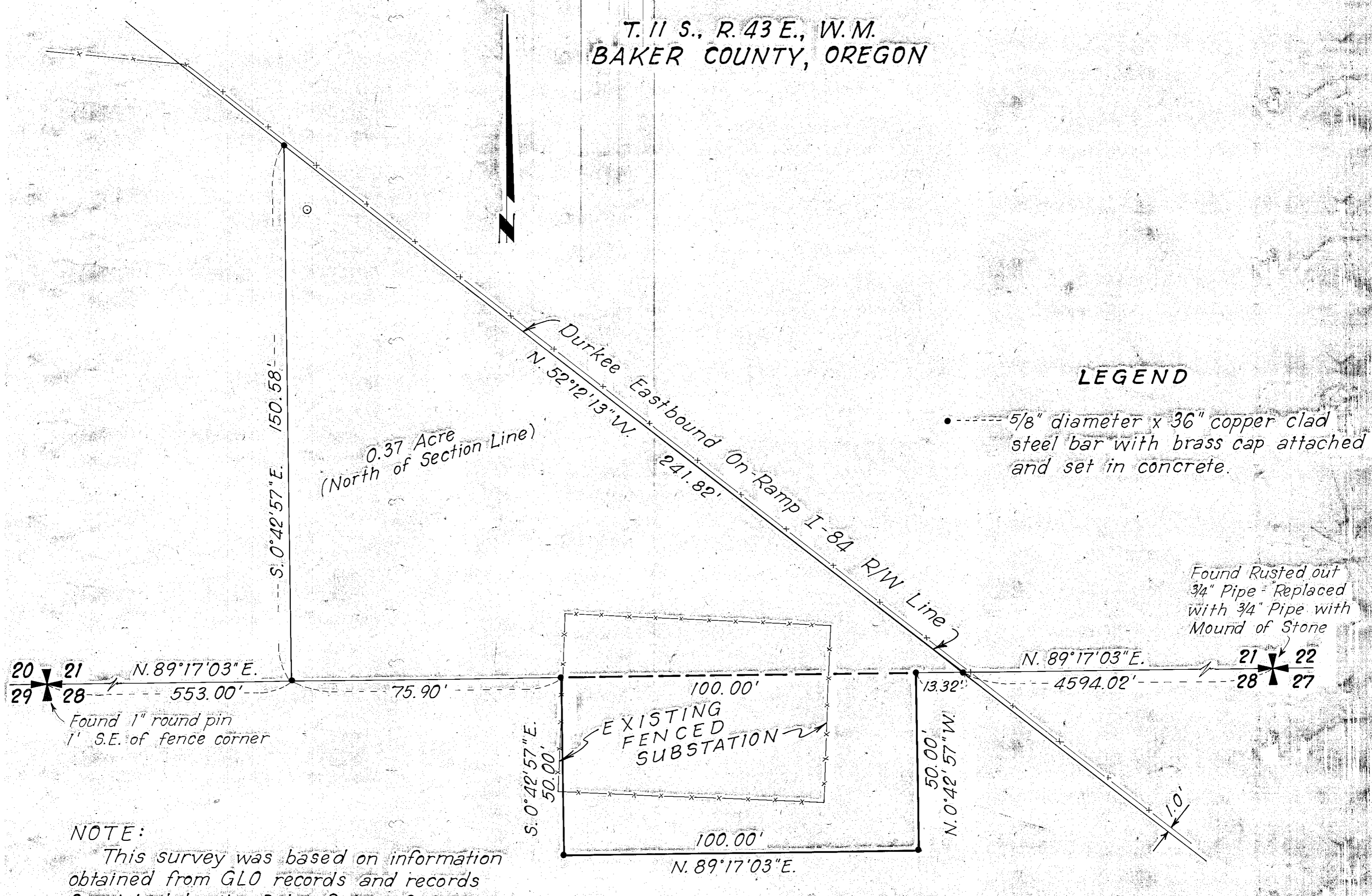


T. 11 S., R. 43 E., W.M.  
BAKER COUNTY, OREGON

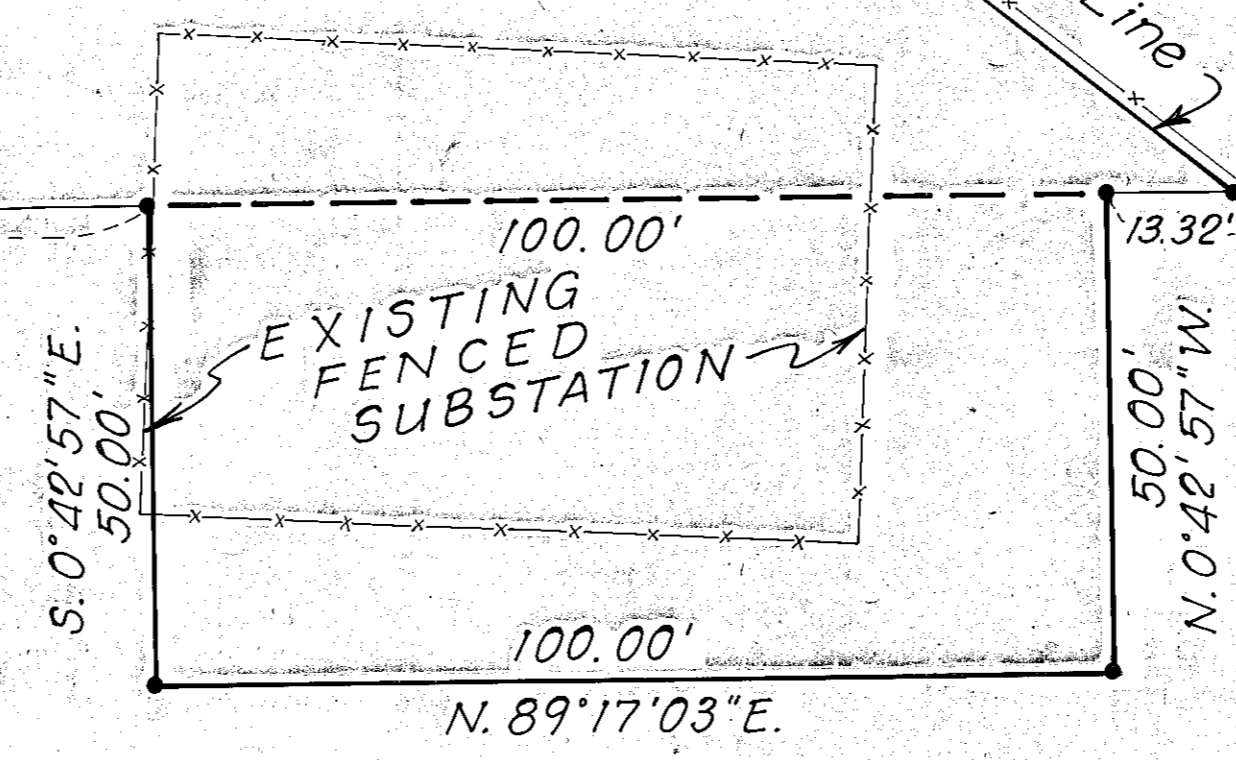


LEGEND

..... 5/8" diameter x 36" copper clad steel bar with brass cap attached and set in concrete.

Found Rusted out 3/4" Pipe - Replaced with 3/4" Pipe with Mound of Stone

20 x 21 N. 89°17'03" E.  
29 x 28 553.00'  
Found 1" round pin 1' S.E. of fence corner



NOTE:  
This survey was based on information obtained from GLO records and records furnished by the Baker County Surveyor and the Oregon Department of Transportation. Monuments found or placed are shown on this survey map.

Basis of bearings - Oregon State Plane Coordinate System, North Zone, from Oregon Department of Transportation.

William H Tulle  
4/1/89  
BAKER COUNTY SURVEYOR  
SURVEY NO. 11-43-5

DURKEE SUBSTATION	
LOCATION AND LAND PURCHASE	
T. 11 S., R. 43 E., W.M. BAKER COUNTY, OREGON	
IDAHO POWER COMPANY BOISE, IDAHO	
SCALE: 1" = 20' DATE: May 1, 1989	
DS.	APPROVED C-
DR.	SHT.
REV. CH.	

Vault No.