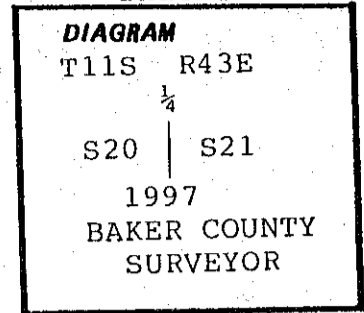


CERTIFIED RECORD OF LAND CORNER MONUMENTATION

Index# P-9

History of original corner establishment:

The original corner was set by Benj. F. Vaughan under GLO contract no. 211, dated July 14, 1874, as part of a subdivisional survey of T. 11 S., R. 43 E., W.M.



The original GLO notes state: Set post 3 feet long 3 in. dia. for 1/4 sec. cor. raised mound with trench as per instructions.

Description of corner evidence found:

No evidence of the original GLO corner was found. Found a 5/8" rebar, see CS 11-43-1, filed Jan. 28, 1964.

Description of monument and accessories established to perpetuate the original location of this corner:

At the position of the found 5/8" rebar set a 1 1/2"x30" galv. pipe with a 2 1/2" dia. brass cap 20" into the ground with a 2' dia. stone mound surrounding it and set a steel fence post alongside. The brass cap is marked as shown in the corner diagram.

Corner monument references: Four 1"x2 1/2" magnets encased in plastic were set 6" below the ground. From the corner monument:

- A silver magnet mkd. "1" bears N. 47° E., 6.6 ft. dist.
- A pink magnet mkd. "2" bears S. 42° E., 13.6 ft. dist.
- A blue magnet mkd. "3" bears S. 47° W., 8.4 ft. dist.
- A orange magnet mkd. "4" bears N. 42° W., 9.5 ft. dist.

Compass declination 19°

**REGISTERED
PROFESSIONAL
LAND SURVEYOR**

James D. Hanley

OREGON
SEPTEMBER 23, 1977
JAMES D. HANLEY
1206

I James D. Hanley certify that this corner was properly remonumented as witnessed by Larry McBroom and Dan Lees on Feb. 28, 1997.

Reference survey: 11-43-7

Office of..... County of.....
 State of....., I hereby certify that the within instrument was filed in this office
 for record on the..... day of....., 19.....
 by
 (COUNTY OFFICIAL) (DEPUTY)

Form R6-7100-57 (9/71)

FILED 2-28-97
 BAKER COUNTY SURVEYOR
 SURVEY NO. P# 46
11-43-3B