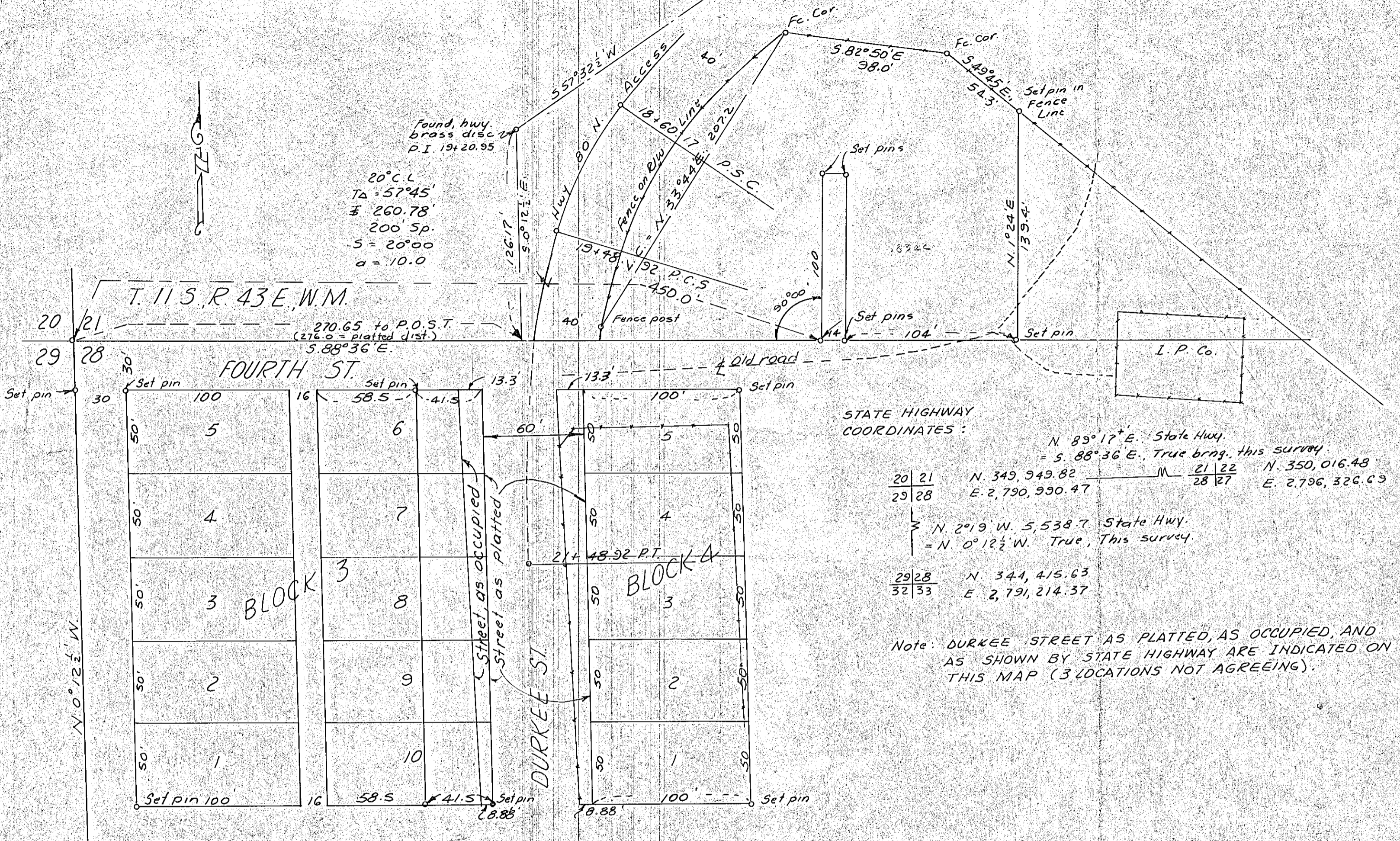




Found hwy brass disc  
P.I. 19+20.95

20° C.L.  
T<sub>A</sub> = 57°45'  
R = 260.78'  
200' Sp.  
S = 20°00'  
d = 10.0

T. 11 S., R. 43 E., W.M.



STATE HIGHWAY COORDINATES:

N. 89°17' E. State Hwy.  
= S. 88°36' E. True brng. this survey.

20	21	N. 349,949.82	M	21	22	N. 350,016.48
29	28	E. 2,790,990.47		28	27	E. 2,796,326.69

N. 2°19' W. 5,538.7 State Hwy.  
= N. 0°12' W. True, This survey.

29	28	N. 344,415.63
32	33	E. 2,791,214.37

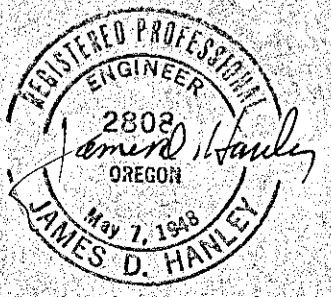
Note: DURKEE STREET AS PLATTED, AS OCCUPIED, AND AS SHOWN BY STATE HIGHWAY ARE INDICATED ON THIS MAP (3 LOCATIONS NOT AGREEING).

MAP OF SURVEY IN DURKEE, ORE.  
JOHN S. LIVINGSTON'S TOWN SITE OF DURKEE.

Scale 1" = 50'

Feb. 24 Mar. 11, 1970

SAM CORDELL &  
RAY JONES SURVEY



FILED March 13, 1970  
DAKER COUNTY SURVEYOR  
11-43-3