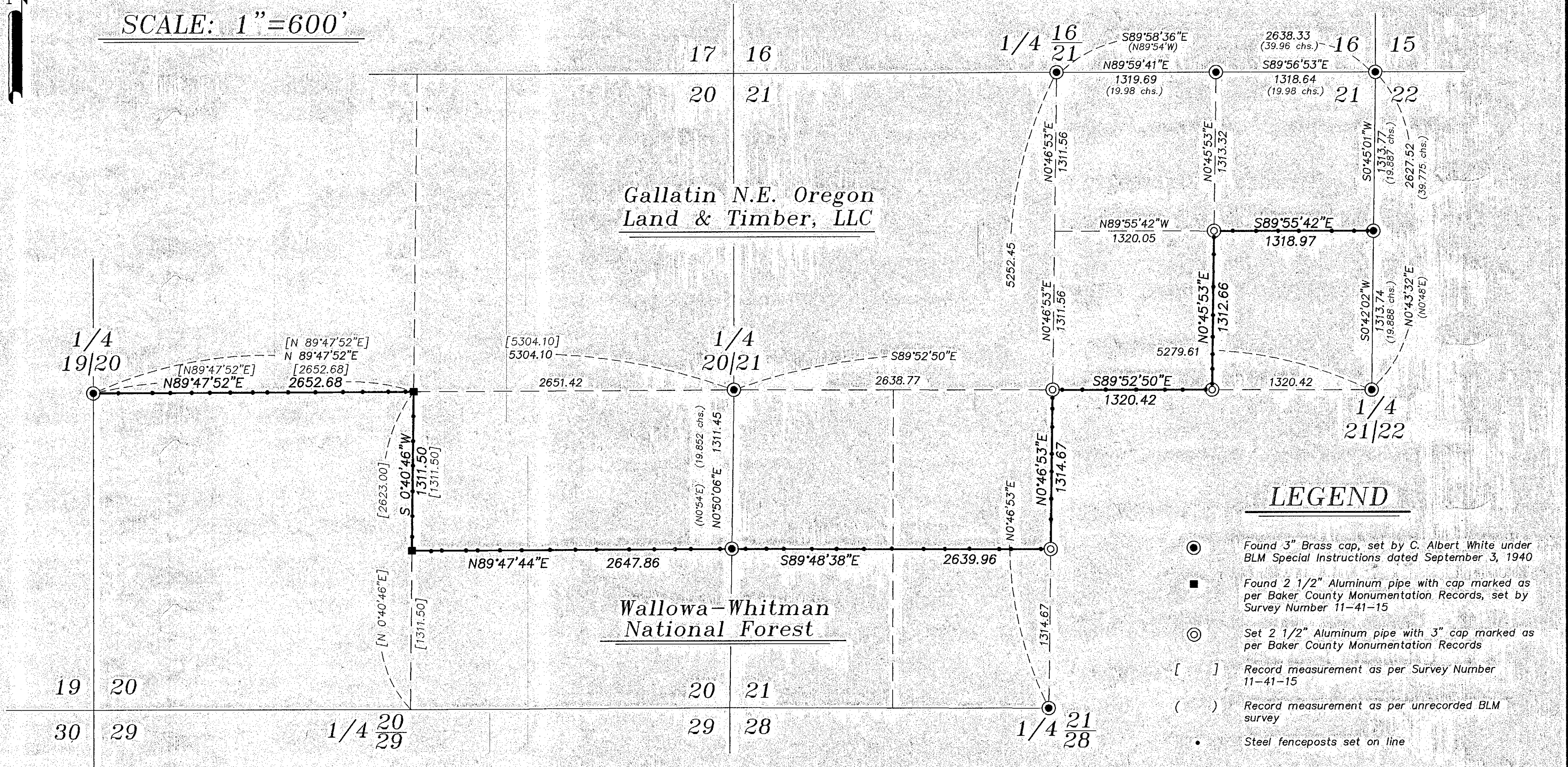


BASIS OF BEARING

The North line of the South half of Section 20, Township 11 South, Range 41 East of the Willamette meridian being North 89°47'52" East, as per Survey Number 11-41-15

SCALE: 1"=600'



LEGEND

- Found 3" Brass cap, set by C. Albert White under BLM Special Instructions dated September 3, 1940
- Found 2 1/2" Aluminum pipe with cap marked as per Baker County Monumentation Records, set by Survey Number 11-41-15
- ⊙ Set 2 1/2" Aluminum pipe with 3" cap marked as per Baker County Monumentation Records
- [] Record measurement as per Survey Number 11-41-15
- () Record measurement as per unrecorded BLM survey
- Steel fenceposts set on line

NARRATIVE

This survey was done at the request of Jerry Duberow on behalf of Gallatin NE Oregon Land and Timber, LLC. The exterior of Sections 20 and 21 were monumented by the Bureau of Land Management Surveyor C. Albert White in 1960 under Special Instructions dated September 3, 1940. Section 20 was further subdivided by Jeff Petersen in Survey 11-41-15. Monuments were recovered as shown. There are some positional discrepancies in the sixteenth corners between the mathematical position and the position of the monuments on the ground. Due to the fact that they were set by BLM surveyors, the duration of time that the monuments have been in the ground and the fact that the positions are within tolerance at the time that they were set, I accept the monumented positions of those corners. I subdivide the section as per the BLM Manual. Steel fenceposts were placed on line. I find no other unusual conditions with this survey.

REFERENCE MATERIAL

GLO Field Notes from Contract No 211, dated July 14, 1874, executed by Benjamin F. Vaughn,
 BLM Field Notes of Dependent Resurvey, executed by C. Albert White under special instructions dated September 3, 1940, included under Group No. 261 and assignment instructions dated May 15, 1960.
 Survey Number 11-41-15
 DEED REFERENCES
 Microfilm Document Number B04 45 0193-0205

REGISTERED
 PROFESSIONAL
 LAND SURVEYOR

OREGON
 JULY 17, 1988
 RICK G. ROBINSON
 2219

Renewal Date: Dec. 31, 2010

BAGETT, GRIFFITH & BLACKMAN
 2006 Adams Avenue, LaGrande, Oregon
 Map of Survey
 Posting of boundary between Gallatin NE Oregon Land and Timber, LLC and Wallowa Whitman National Forest situated in Sections 20 and 21, Township 11 South, Range 41 East of the Willamette Meridian
 BAKER COUNTY, OREGON

SURVEYED FOR	Jerry Duberow
SURVEYED BY	R. G. R.
Scale: 1" = 600'	Drawn by: J. S. H. 6/09

FILED Sept. 4, 2009
 BAKER COUNTY SURVEYOR
 SURVEY NO. 11-41-19