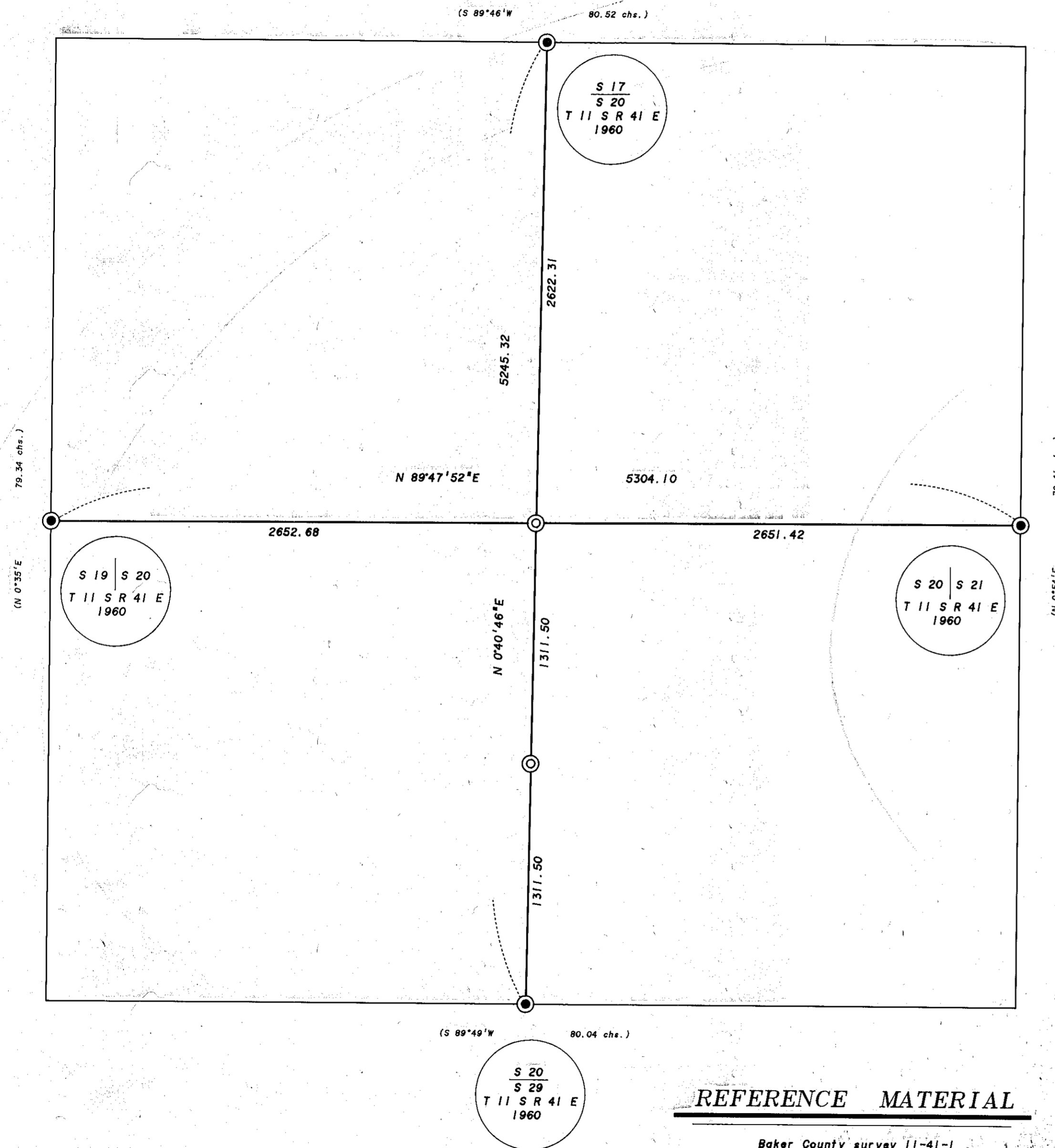


SECTION 20, TOWNSHIP 11 SOUTH, RANGE 41 EAST



BASIS OF BEARING

Solar observations taken at a point 254.31 feet North and 167.28 feet East of the East one-quarter corner of Section 20, Township 11 South, Range 41 East of the Willamette Meridian.



LEGEND

- ⊙ Set 2 1/2" x 30" aluminum pipe monument, see monumentation records filed separately.
- Found 2" iron pipe with 2 1/2" brass cap marked as shown, as per BLM survey (see reference material).
- () Record information as per BLM survey (see reference material).

NARRATIVE

This survey was ordered by Steve Gurnsey of behalf of Boise Cascade Corporation. Mr. Gurnsey instructed me to monument the Center 1/4 corner and the Center-South 1/16 corner of Section 20. I find the monuments at the 4 quarter corners of Section 20 as per the unrecorded BLM survey (see reference material). These monuments are accepted for the 1/4 corner positions. After tying the 4 quarter corners I set the Center 1/4 corner at the intersection point of the lines connecting the opposite 1/4 corners. The Center-South 1/16 corner was set on line and midway between the Center 1/4 corner and the South 1/4 corner.

REGISTERED
PROFESSIONAL
LAND SURVEYOR
Jeffery P. Petersen
OREGON
JULY 20, 1993
JEFFERY P. PETERSEN
2025
Renewal Date: Dec. 31, 1994

REFERENCE MATERIAL

Baker County survey 11-41-1
Dependent Resurvey of T11S, R41E done by C. Albert White, cadastral surveyor for the Bureau of Land Management, under special instructions group No. 261, dated September 3, 1940, approved January 16, 1941, and assignment instructions dated May 5, 1960. This survey is not filed with the Baker County Surveyor as of the date of this survey.

FILED 8-20-94
BAKER COUNTY SURVEYOR
SURVEY NO. 11-41-15

BAGETT-GRIFFITH & ASSOCIATES 2006 Adams Avenue, LaGrande, Oregon Map of Survey	
Located in Section 20, Township 11 South, Range 41 East of the Willamette Meridian.	
BAKER COUNTY	
SURVEYED FOR	BOISE CASCADE CORPORATION
SURVEYED BY	JPP 7-94
Scale: 1" = 500'	Drawn by: JPP 8-94