

RECORD OF LAND CORNER MONUMENTATION

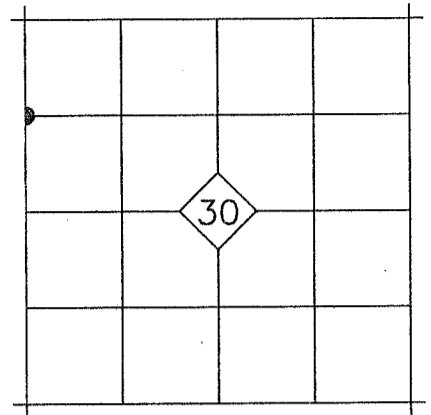
CORNER: CORNER 5 OF R.T. LINCOLN PLACER LOCATED IN SECTION 30, T.11S., R.40E., W.M.

ORIGINAL SURVEY BY: Charles M. Foster, U.S. Deputy Mineral Surveyor

SURVEY NUMBER: Mineral Survey No. 612

INSTRUCTIONS DATED: November 16, 1904

SUBSEQUENT SURVEY: Baker County Survey No. 11-40-78 by William Wells, PLS and William Hanley, PLS, filed January 23, 1987



ORIGINAL DESCRIPTION: A pine post 4 ft long 4 ins square, set 18 ins in the ground, surrounded with a mound of earth scribed R.T. Lincoln cor. 5-612. Identical with the S.W. cor of Said Lot No. 1 of sec 30

SURVEY NO. 11-40-78: This corner was not monumented, but was calculated by single proportionate measurement between controlling monuments on the west line of Section 30.

EVIDENCE FOUND: We found no remaining evidence

DESCRIPTION OF MONUMENTS AND ACCESSORIES SET AND METHODS USED:

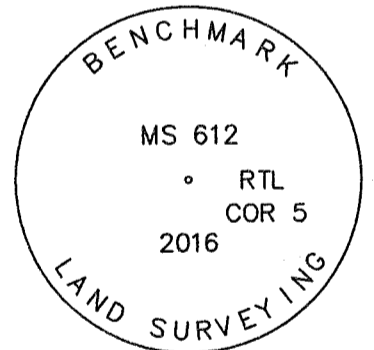
I reestablished R.T. Lincoln Corner #5 by single proportionate measurement between the found monuments from Survey 11-40-78 at R.T. Lincoln Corner #4 and the West 1/4 corner of Section 30. At the corner point, as located by survey, we set a 5/8"x30" iron pin with attached 2" aluminum cap 28" in the ground. Cap is marked as shown below.

From which, I SET A REFERENCE POINT:

- ▶ A 5/8"x30" iron pin bears N.45°14'W., 42.21 ft. with attached yellow plastic cap marked BENCHMARK SURVEYING

I ALSO SCRIBE A BEARING TREE:

- ▶ A Douglas-fir bears N.20°W., 8.0 ft. marked 5 RTL 612 BT



Used RTK GPS to measure the reference point. Distance to BT was measured with a steel tape, measuring to a 50d nail driven in the side-center at the root crown of the BT. Attached yellow aluminum BT tag to tree.

RESTORATION BY, STAMP AND DATE:

Work Performed August 19, 2016 by:

Jason L. Hatfield, PLS
Marcus R. Teague, Technician

BENCHMARK LAND SURVEYING, INC.
2101 Main Street
Baker City, OR 97814
(800) 699-0516
www.benchmarkls.com

FILED August 29 2016
BAKER COUNTY SURVEYOR
SURVEY NO. 11-39-193
11-40-256

