

# Record of Survey

## Sundry/Rooster Rock Cadastral Survey Wallowa-Whitman National Forest

### NOTES

- On corners, shown hereon, requiring Corner Records be filed separately with the Baker County Surveyor, the following information applies:
- Record and measured distances to bearing trees are to the side center of tree unless noted otherwise.
  - All bearing trees are painted with red bands and have Bearing Tree (54-3) and Land Survey Monument (54-9) signs attached.
  - All new bearing trees have an aluminum nail side center for distance measurement.
  - Bearings and distances to new bearing trees were measured using a Warren Knight staff compass with tripod, a logger's tape, a diameter tape and clinometer, or a Nikon Total Station from established control. Bearings to bearing trees at corners not needing new accessories were checked against the record with a hand compass. The project magnetic declination was determined to be 15 1/2° East using the National Geophysical Data Center web site.
  - Corners controlling the National Forest Boundary, as shown herein, are posted with Property Boundary (54-2) signs, with a Land Survey Monument (54-9) sign on nearby post.
  - Other controlling corners, as shown herein, are posted with a nearby Land Survey Monument (54-9) sign.
  - Fence locations, if any, are described in Monument Records filed separately.

### REFERENCE MATERIAL

Deed References:  
N/A

County Surveys:  
CS 11-40-126  
CS 11-40-244 (same as PP 2001-016)

Other Material:

- Partition Plat P2006-014
- Partition Plat P2001-016 (same as RS 11-40-244)
- GLO Field Notes and Plat of Contract No. 418, by Henry W. Cooke, approved October 26, 1882.
- BLM Field Notes and Plat of Group No. 350, by A. Joseph Garrison and James J. Carlson, approved June 13, 1977.
- Corner Records filed with the Baker County Surveyor.
- No Title Report was supplied or utilized in support of this survey.

### LEGEND

- Recovered this survey, a remonumentation of original cadastral corner. Corner Record filed separately with the Baker County Surveyor, unless noted otherwise.
  - Cadastral monument of record, not positioned this survey.
  - Maintenance of existing USFS Posted line (///// NFSL side).
- NFSL National Forest System Lands

### NARRATIVE

#### Purpose:

This survey was performed under Wallowa-Whitman National Forest Contract No. AG-046W-C-07-0017, dated July 2, 2008. Jane A. Stuessy, United States Forest Service (USFS), is the Contracting Officer (CO). Kenneth A. Lind, LS, USFS, is the Contracting Officer's Representative (COR), and provided technical support and consultation.

The purpose of this survey is to verify a proper subdivision of section 17 as established by a recovered USFS monument NOT OF RECORD near the center quarter-section of 17. Said monument was marked as center quarter-section corner. This survey was NOT to establish deed lines, except as lines of ownership may follow cadastral lines. No Title Report, deeds, or legal descriptions were supplied or employed in support of this survey. Subsequent to verification of proper center quarter-section position, this survey was to maintain existing USFS posting along the east-half of the east-west center of section, the north-half of the north-south center of section, the north boundary of the NW1/4 sec. 17, and the east boundary of the SE1/4 NE1/4 sec. 17, all as shown hereon. Ownership shown hereon is as depicted on the Baker County Assessor's Map and is shown for informational purposes only.

#### History:

The subdivision of Township 11 South, Range 40 East, WM, Baker County, Oregon, was originally surveyed by Henry W. Cooke, under Contract No. 418, approved October 26, 1882.

Re monumentation, without survey, of certain original corner points in T11S, R40E, was completed by A. Joseph Garrison and James J. Carlson, under Group No. 350, approved June 13, 1977.

The section line common to secs. 16 and 17 was resurveyed by Douglas M. Ferguson, LS 848, for the USFS and filed with the Baker County Surveyor as Record of Survey (RS) No. 11-40-126, on January 4, 1991.

Portions of section 17 are described on partitions from record information, without benefit of field survey, recorded with the Baker County Clerk as PP 2001-016 and 2006-014, by David B. Armstrong, LS 1026, in 2001, and Gregory T. Blackman, LS 991, in 2006, respectively.

#### Procedure:

The quarter-section corner of 8 and 17, and quarter-section corner of 16 and 17 were recovered in immediate vicinity (± 6 ins.) of fence angle points. Said fence runs along, or near, the south and west boundaries of the northeast-quarter of sec. 17. Said monuments were encased in concrete alongside fence posts, and had obviously been removed and reset. Monument stampings were NOT oriented correctly, i.e., to read looking northerly. Though absolute accuracy in the resetting of the monuments cannot be assured, the currently occupied positions are in practicable agreement with the numerous accessories of record at each corner. Said quarter-section corners as currently monumented are ACCEPTED by this survey.

A monument NOT OF RECORD was recovered near the position of the center quarter-section corner of sec. 17. Said monument was marked with Land Surveyor No. 1921 (Jasper M. Sams) and year 1993. This monument is in practicable agreement with the proper position for said center quarter-section corner, lying S. 84°38' E., 0.35 ft. from said proper position, and is ACCEPTED by this survey.

This survey was performed as defined in the Department of Interior, Bureau of Land Management, Manual of Survey Instructions '73 (Manual), USFS Cadastral Survey Specifications, Oregon Revised Statutes (ORS), and followed the "Standards and Guidelines for Cadastral Surveys using Global Positioning System Methods, Version 1.0, March 31, 2001, as adopted by the US DOI Bureau of Land Management and USDA Forest Service".

This survey was performed by a combination of GPS and conventional ground survey methods. Dual frequency carrier-phase receivers were used to establish control and monument positioning. A total station (3 sec. angular, 2mm±2ppm EDM) and data collector were utilized for conventional ground surveys. All monumented positions are within closed GPS networks, a conventional closed traverse, or with benefit of redundant measurements. Trimble Geomatics Office software was used for least squares adjustment, at the two sigma level, of survey data.

The geographic position shown hereon was derived by static GPS methods and is controlled by observation data uploaded to the U.S. National Geodetic Survey (NGS) Online Positioning User Service (OPUS), which utilized Continuously Operating Reference Stations (CORS'96, epoch 2002); BURNS JUNCTION (BURN), IDAHO DOT (IDTD) and GRANGEVILLE (IDNP).

**Basis of Bearing:** The Basis of Bearing was derived from GPS observations. Plane Coordinates were calculated on a false meridian, and zero convergence angle, at the quarter cor. of secs. 16 and 17, and then converted to ground bearing and distances with a project scale factor of 1.0002478103.

### F. S. ACCEPTANCE

Examined and approved for the U.S. Forest Service  
this 9th day of December, 2008.

*Kenneth A. Lind*, COR.

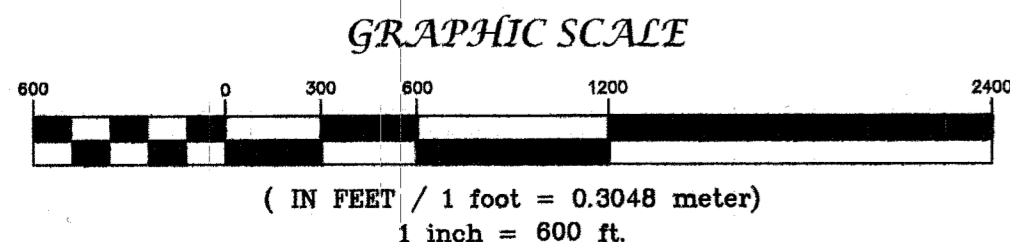
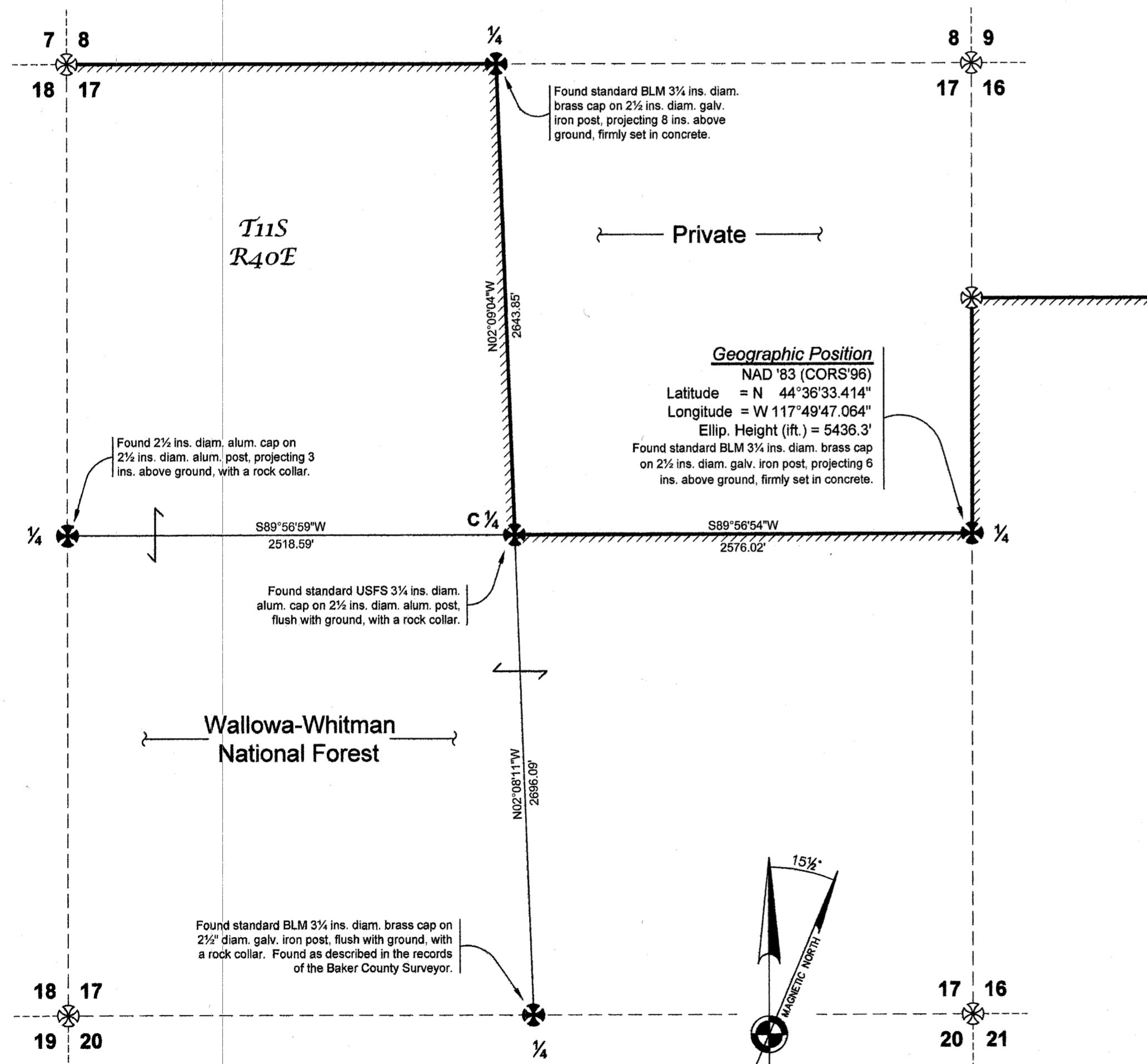
I certify that this survey was performed at the  
request of the Wallowa-Whitman National Forest Supervisor.

*Ron C. Walter* Dec. 9, 2008  
Signature Date

FILED December 9, 2008

BAKER COUNTY SURVEYOR

SURVEY NO. 11-40-245



### CERTIFICATE OF SURVEY

I, Ron C. Walter, L.S. No. 2648, State of Oregon, do hereby certify that the survey represented on this plat was performed by me or under my supervision in accordance with the laws of the State of Oregon, at the request of the U.S. Department of Agriculture, Forest Service.

REGISTERED  
PROFESSIONAL  
LAND SURVEYOR

*Ron C. Walter*

OREGON  
JANUARY 18, 1994  
RON C. WALTER  
2648  
Renewal Date: June 30, 2010

Record of Survey Wallowa-Whitman National Forest		
LOCATED WITHIN Section 17 Township 11 South, Range 40 East Willamette Meridian, Baker County, Oregon		
<b>Wallowa Associates</b> 303 S.E. Alamo Street Enterprise, Oregon 97828 (541) 426-9049		
SCALE 1" = 600'	SHEET No. 1 of 1	DATE OF SURVEY Beginning: July 29, 2008 Ending: September 5, 2008
DRAWN BY MB DATE 9/08	CHECKED RCW	PROJECT No. WA 1071-02/1816