

NARRATIVE OF SURVEY - PERFORMED AT REQUEST OF U.S.D.A. FOREST SERVICE

THIS DEPENDENT RESURVEY AND SUBDIVISIONAL SURVEY OF PORTIONS OF SECTIONS 29, 30, & 31, T.11S, R.40E, W.M. WAS PERFORMED JOINTLY BY WILLIAM R. WELLS, ORLS 1106, AND WILLIAM L. HANLEY, ORLS 1559, UNDER JOINT VENTURE CONTRACT WITH THE USDA-FOREST SERVICE...

TWO COMPLETE AND INDEPENDENT 2-MAN SURVEY CREWS PERFORMED THE FIELD WORK REPRESENTED BY THIS RECORD, EACH OF WHICH WAS STAFFED BY ONE REGISTERED SURVEYOR AND ONE EXPERIENCED SURVEYOR'S HELPER...

IN SECTION 30, MANY OF THE SECTION BREAKDOWN CORNERS HAD BEEN SET BY JIM HANLEY IN 1965. IN MOST INSTANCES, THESE CORNER MONUMENT POSITIONS WERE ACCEPTED AS RECOVERED AND THE CORNER MONUMENTS WERE EITHER MAINTAINED TO FOREST SERVICE STANDARD OR THE POSITION WAS REMONUMENTED WITH A NEW MONUMENT.

A NUMBER OF UNRECORDED 5/8" IRON PINS WERE RECOVERED IN SECTION 30. THESE PINS ARE APPARENTLY SET TO MARK PRIVATE PROPERTY CORNERS ALONG THE FOREST BOUNDARY. SEE PLAT, NOTES AND LEGEND FOR A DESCRIPTION OF PINS FOUND.

LOCATED IN SECTION 30 ARE MINERAL SURVEYS NO. 611, 612 AND 705. PATENTS WERE ISSUED AND DESCRIBED BASED ON THE MINERAL SURVEYS. THESE MINERAL SURVEY LINES DO NOT COINCIDE WITH NORMAL SUBDIVISION OF SEC. 30. AN OPINION FROM BLM WAS OBTAINED ON THIS SITUATION IN DECEMBER, 1986...

IN WORKING ON THE GUIDE MERIDIAN, JUNIOR CORNERS RECOVERED OFF LINE, APPLYING TO T.11S, R.40E, WERE MARKED "AM" FOR "AMENDED MONUMENT" AND A TRUE INTERSECTION CORNER MONUMENT WAS ESTABLISHED ON THE GUIDE MERIDIAN...

ON THE SOUTH LINE OF SECTION 31, THE SOUTH 1/4 CORNER HAD PREVIOUSLY BEEN RECOVERED AND REMONUMENTED BY BLM. THE SW CORNER OF SECTION 31, T.11S, R.40E AND THE N1/4 SECTION 6, T.12S, R.40E, WERE BOTH THOROUGHLY SEARCHED...

HISTORY OF SURVEYS

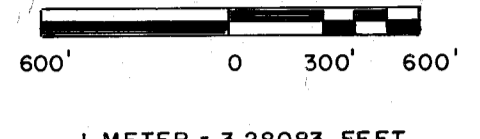
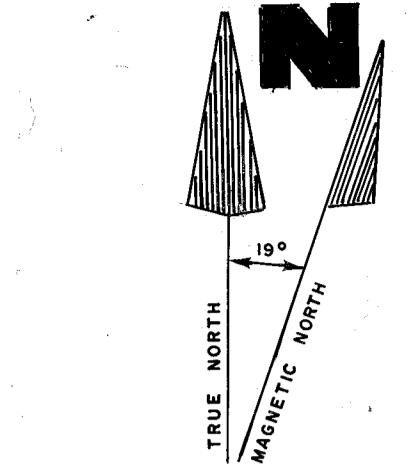
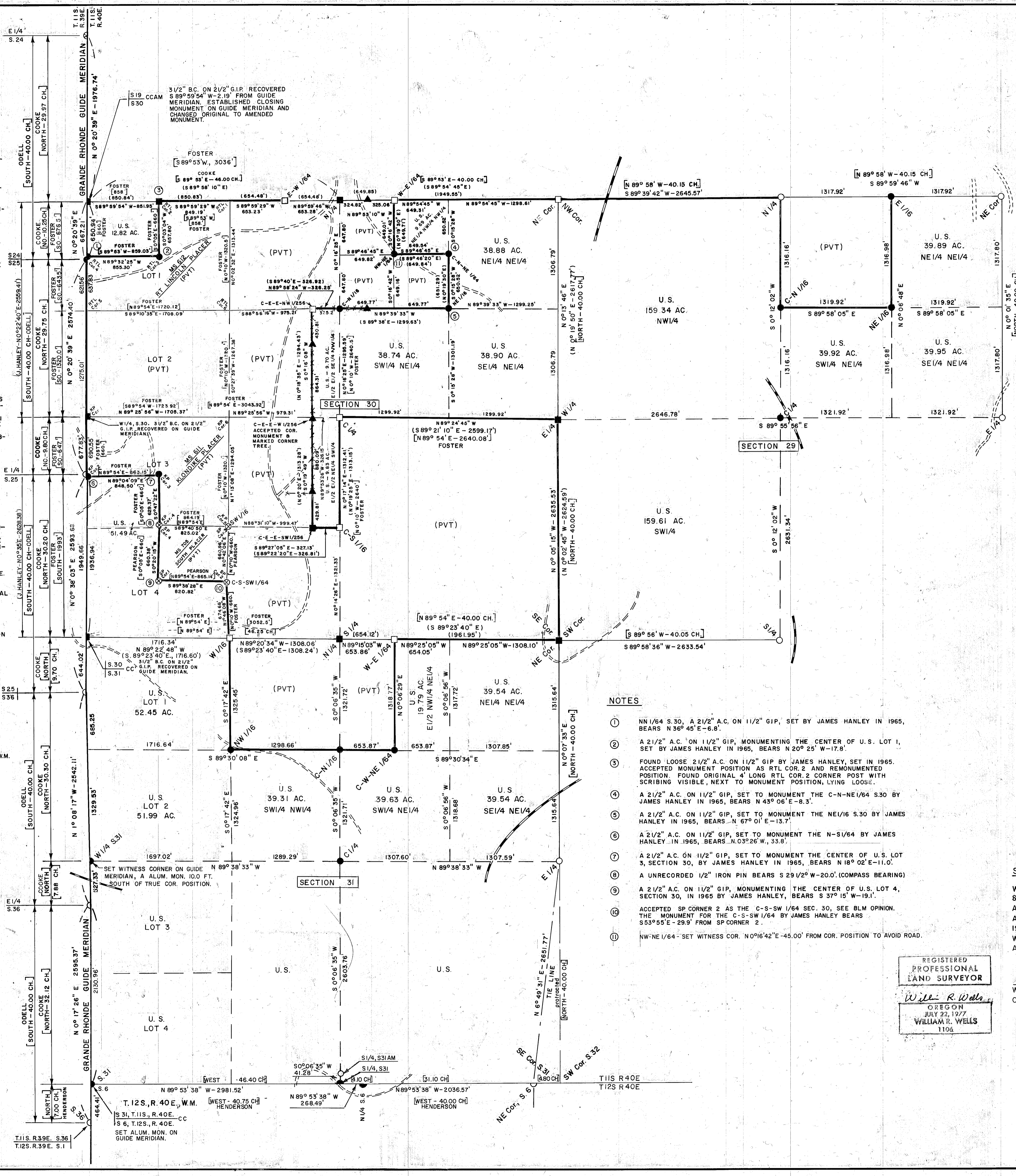
THE GRANDE RHONDE GUIDE MERIDIAN (SENIOR LINE) BETWEEN T.11S, RANGES 39 AND 40E, W.M. WAS FIRST SURVEYED BY W.H. ODELL, U.S. DEPUTY SURVEYOR, UNDER CONTRACT NO. 105, DATED JULY 22, 1864...

IN 1905, DURING HIS SURVEYS FOR MS 611 AND 612 IN SECTION 30, CHARLES FOSTER, DEPUTY MINERAL SURVEYOR, CLAIMS TO HAVE RECOVERED THE ESTABLISHED W1/4 OF SECTION 30, T.11S, R.40E, W.M. THE BLM, OREGON STATE OFFICE, HAS BEEN UNABLE TO FIND ANY RECORD OF THE ESTABLISHMENT OF THE W1/4 CORNERS...

IN 1961 AND 1965, JAMES HANLEY, COUNTY SURVEYOR, DID SURVEYS AND REMONUMENTATION WORK IN T.11S, R.40E, W.M. SEE MAPS RECORDED FOR THIS WORK IN BAKER COUNTY SURVEYOR'S OFFICE. ALSO SEE RECORDED CORNER CERTIFICATES.

IN 1971 THROUGH 1975, CERTAIN CORNERS WERE REMONUMENTED BY BLM, UTILIZING EXISTING, ORIGINAL EVIDENCE. THIS REMONUMENTATION WORK WAS DONE UNDER GROUP 350 INSTRUCTIONS, DATED MAY 6, 1957.

IN JULY AND AUGUST, 1986, SURVEYS, REMONUMENTATION AND MONUMENTATION WAS DONE IN T.11S, R.39E, W.M. AND ALONG THE GUIDE MERIDIAN, BY SURVEYORS W.L. HANLEY AND W.R. WELLS-BILL HANLEY/BILL WELLS JOINT VENTURE. SEE RECORDED MAP NOS. 11-39 20 & 21.



BEARINGS ARE BASED ON SOLAR OBSERVATION NEAR E1/4 S.36, T.11S, R.39E, W.M. AVERAGE CONVERGENCE IS 0° 00' 50" PER MILE EAST OF SOLAR OBSERVATION. ELEVATION DATUM FOR CONTROL TRAVERSE = 5000' MSL.

LEGEND

- SET 2 1/2" x 30" ALUM. PIPE WITH 1/2" ALUM. CAP BY SURVEY.
○ FOUND 3" BLM BRASS CAP ON 2 1/2" G.I.P. MONUMENTED FROM EXISTING ORIGINAL EVIDENCE.
⊗ SET 2 1/2" x 30" ALUM. PIPE WITH 1/2" ALUM. CAP FROM EXISTING ORIGINAL EVIDENCE.
□ FOUND AND ACCEPTED CORNER MONUMENT BY J. HANLEY ESTABLISHED IN 1965, UNLESS OTHERWISE NOTED, CORNER MONUMENTS ARE 2 1/2" ALUM. CAPS ON 1 1/2" FLANGED GALV. IRON PIPE.
■ FOUND AND ACCEPTED CORNER MONUMENT BY J. HANLEY ESTABLISHED IN 1965. THESE J. HANLEY MONUMENTS WERE REPLACED WITH 2 1/2" x 30" ALUM. PIPES WITH 1/2" ALUM. CAPS.
▲ FOUND UNRECORDED 5/8" IRON PIN WITH YELLOW PLASTIC CAP 1 1/2" IN DIAMETER MARKED "HANLEY ENGRG."
① SEE NOTE INDEXED BY NUMBER IN CIRCLE.
--- FENCES
--- ROADS CROSSED BY TRAVERSE LINES.
--- NATIONAL FOREST BOUNDARY POSTED ACCORDING TO THIS CONTRACT.
(XOX) RECORD BEARINGS AND DISTANCES FROM J. HANLEY SURVEY OF 1965. (MAP NO. 11-40-9).
[XOX] RECORD BEARINGS AND DISTANCES FROM G.L.O. SURVEY RECORD. UNLESS OTHERWISE NOTED, THE BEARINGS AND DISTANCES ARE THOSE REPORTED BY HENRY COOKE.

NOTES

FOR ADDITIONAL INFORMATION ON CORNERS MONUMENTED OR REMONUMENTED, SEE CERTIFIED RECORD OF LAND CORNER MONUMENTATION FORMS FILED WITH THIS PLAT. FIELD BOOK REFERENCE: FIELD BOOKS 1 THRU 8 & 11 OF THE RANCHERIA CADASTRAL SURVEY.

NOTES

- 1 NN 1/4 S.30, A 2 1/2" A.C. ON 1 1/2" G.I.P., SET BY JAMES HANLEY IN 1965, BEARS N 36° 45' E - 6.8'.
2 A 2 1/2" A.C. ON 1 1/2" G.I.P., MONUMENTING THE CENTER OF U.S. LOT 1, SET BY JAMES HANLEY IN 1965, BEARS N 20° 25' W - 17.6'.
3 FOUND LOOSE 2 1/2" A.C. ON 1 1/2" G.I.P. BY JAMES HANLEY, SET IN 1965. ACCEPTED MONUMENT POSITION AS RTL COR. 2 AND REMONUMENTED POSITION. FOUND ORIGINAL 4" LONG RTL COR. 2 CORNER POST WITH SCRIBING VISIBLE, NEXT TO MONUMENT POSITION, LYING LOOSE.
4 A 2 1/2" A.C. ON 1 1/2" G.I.P., SET TO MONUMENT THE C-N-NE1/4 S.30 BY JAMES HANLEY IN 1965, BEARS N 43° 06' E - 8.3'.
5 A 2 1/2" A.C. ON 1 1/2" G.I.P., SET TO MONUMENT THE NE1/6 S.30 BY JAMES HANLEY IN 1965, BEARS N 67° 01' E - 13.7'.
6 A 2 1/2" A.C. ON 1 1/2" G.I.P., SET TO MONUMENT THE N-S1/64 BY JAMES HANLEY IN 1965, BEARS N 03° 26' W, 33.6'.
7 A 2 1/2" A.C. ON 1 1/2" G.I.P., SET TO MONUMENT THE CENTER OF U.S. LOT 3, SECTION 30, BY JAMES HANLEY IN 1965, BEARS N 18° 02' E - 11.0'.
8 A UNRECORDED 1/2" IRON PIN BEARS S 29 1/2° W - 20.0'. (COMPASS BEARING)
9 A 2 1/2" A.C. ON 1 1/2" G.I.P., MONUMENTING THE CENTER OF U.S. LOT 4, SECTION 30, IN 1965 BY JAMES HANLEY, BEARS S 37° 15' W - 19.1'.
10 ACCEPTED SP CORNER 2 AS THE C-S-SW 1/64 SEC. 30, SEE BLM OPINION. THE MONUMENT FOR THE C-S-SW 1/64 BY JAMES HANLEY BEARS S 53° 55' E - 29.9' FROM SP CORNER 2.
11 NW-NE1/64 - SET WITNESS COR. N 0° 16' 42" E - 45.00' FROM COR. POSITION TO AVOID ROAD.

SURVEYOR'S CERTIFICATE

WE, WILLIAM R. WELLS AND WILLIAM L. HANLEY, REGISTERED PROFESSIONAL LAND SURVEYORS, IN THE STATE OF OREGON, DO HEREBY CERTIFY THAT THIS PLAT, AND THE CORNER CERTIFICATES ATTACHED, ARE A CORRECT REPRESENTATION OF A SURVEY PERFORMED BY US DURING THE MONTHS OF AUGUST AND SEPTEMBER, 1986, AT THE REQUEST OF THE U.S.D.A. FOREST SERVICE. SAID SURVEY AND PLAT WERE PREPARED IN ACCORDANCE WITH THE STATUTES OF THE STATE OF OREGON AND THE ARTICLES OF THE CONTRACT.

REGISTERED PROFESSIONAL LAND SURVEYOR
WILLIAM R. WELLS
OREGON JULY 22, 1977
WILLIAM R. WELLS
1106

REGISTERED PROFESSIONAL LAND SURVEYOR
WILLIAM L. HANLEY
OREGON JULY 22, 1978
WILLIAM L. HANLEY
1639

WILLIAM R. WELLS
WILLIAM R. WELLS
OREGON LICENSE NO. 1106

WILLIAM L. HANLEY
WILLIAM L. HANLEY
OREGON LICENSE NO. 1639

FILED 1-23-87
BAKER COUNTY SURVEYOR
SURVEY NO. 11-40-78

Table with project information: BILL HANLEY - BILL WELLS JOINT VENTURE, RANCHERIA CADASTRAL SURVEY, SECTIONS 29, 30 & 31, T.11S, R.40E, W.M., MS 611, MS 612 & MS 705, BAKER COUNTY, OREGON, WALLOWA-WHITMAN NAT. FOREST, CONTRACT NO. 53-04HI-6-0055N