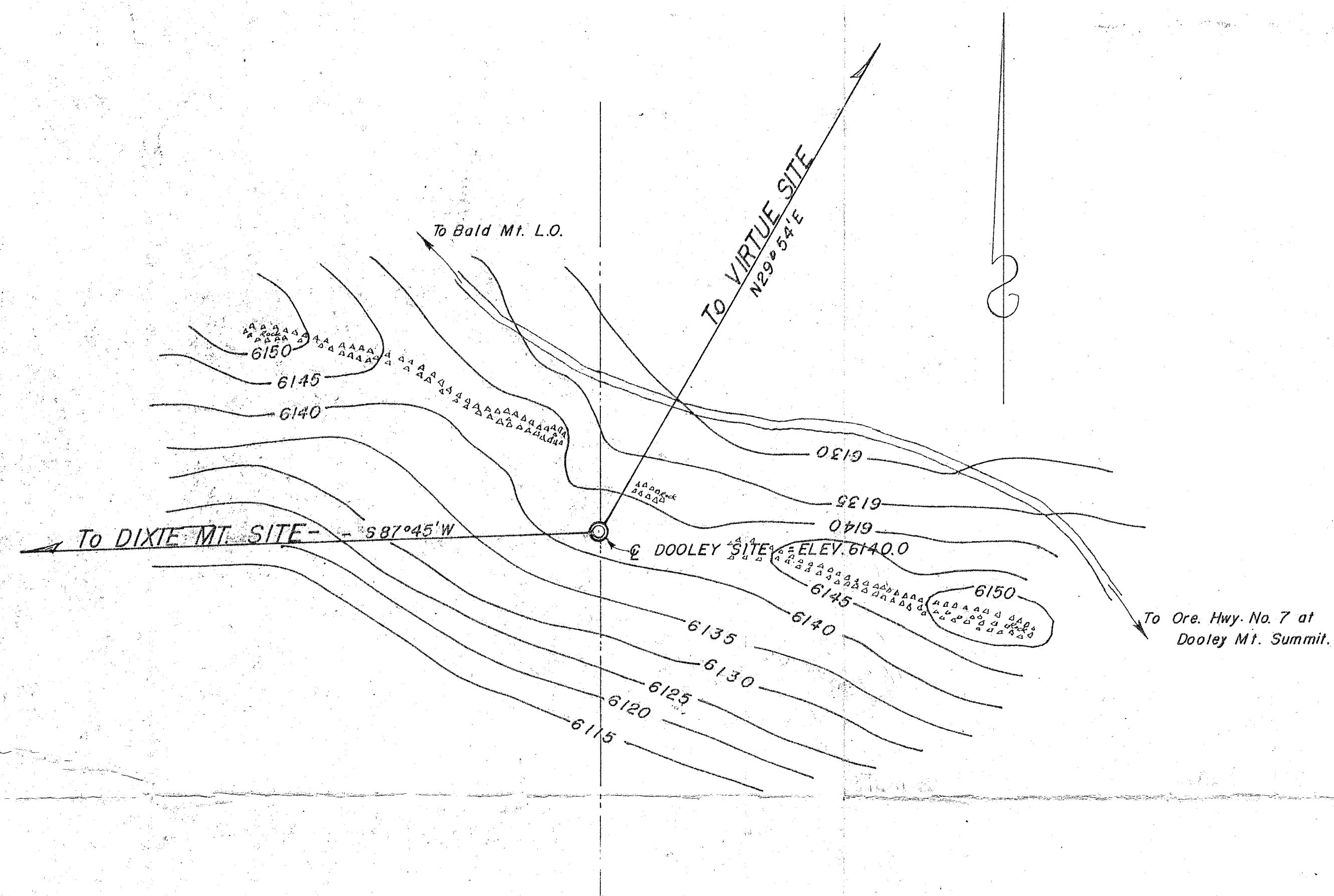


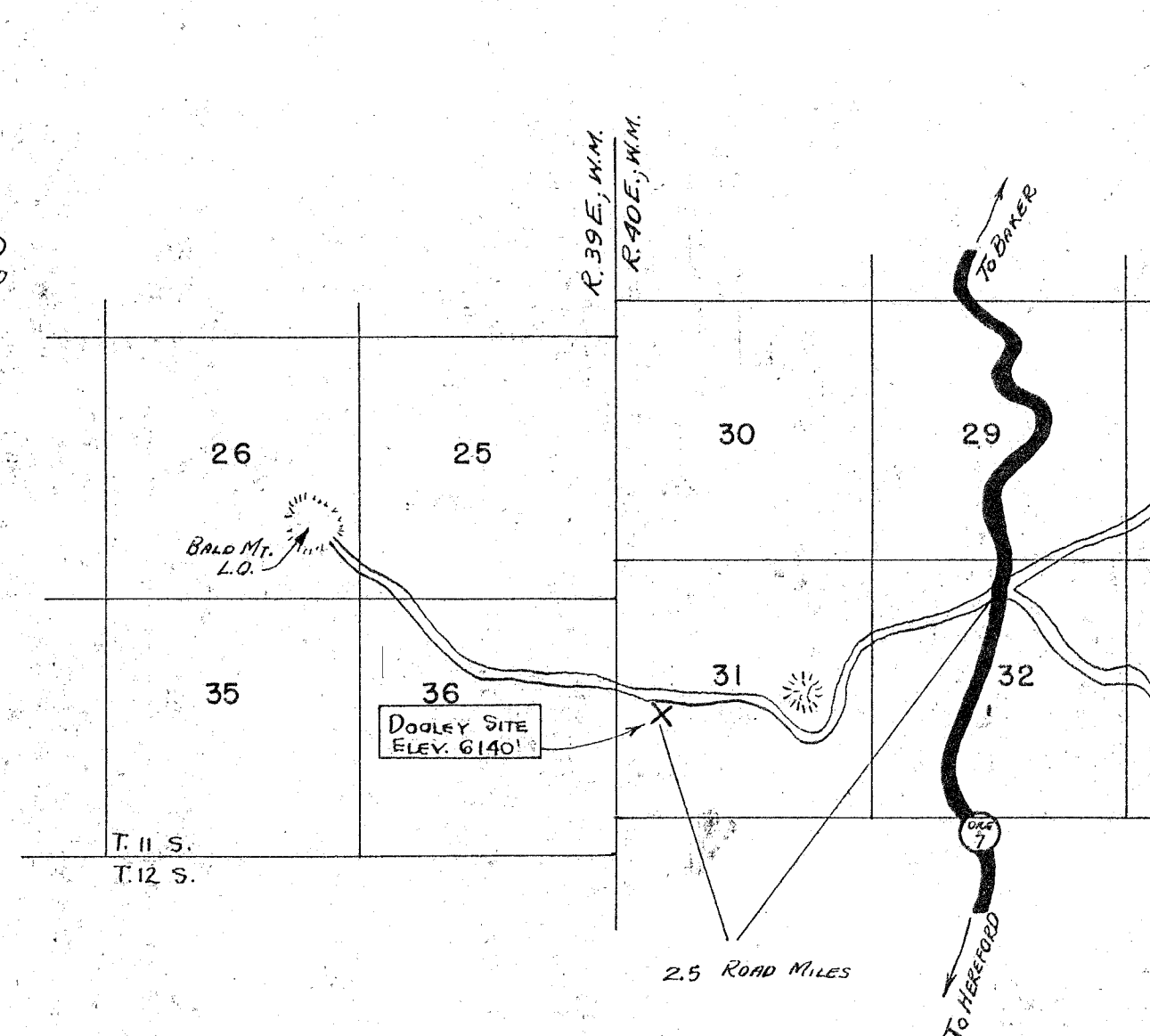
### SURVEY

SCALE: 1" = 50'



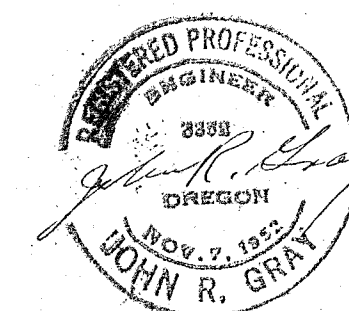
### TOPOGRAPHY

SCALE: 1" = 50'



### VICINITY MAP

SCALE: 1/2" = 1 Mile.



FILED Aug 27 1956  
BAKER COUNTY SURVEYOR  
SUB. 11-40-1

JOHN R. GRAY REG. PROF. ENGR. 3352			
359 N.E. 130 th. Place		AL 4-7550 Portland 16, Oregon	
SURVEY & TOPOGRAPHY			
DOOLEY SITE			
BAKER COUNTY, OREGON			
Drawn by JRG	AUG. 21, 1956	SHEET 1 OF 1	
Checked by JRG	JOB 56-12		