

AT THE SW COR. SECTION 34,  
FOUND A 2 1/2" ALUMINUM PIPE  
AND CAP FROM RECORD  
CORNER RESTORATION SHEET,  
SURVEY NO. 10-39-83  
(WEST 2640)  
N89°48'06"W 2648.26

AT THE SW COR. SECTION 35,  
FOUND A 2" IRON PIPE FROM  
RECORD SURVEY NO. 10-39-6  
(WEST 2640)  
N89°34'49"W 2657.76

AT THE SE COR. SECTION 35,  
FOUND A 1 1/2" GALV. IRON PIPE  
WITH ATTACHED BRASS CAP FROM  
RECORD L.P. 1995-06, CORNER  
RESTORATION SHEET FILED AS  
SURVEY NO. 10-39-159  
S89°57'22"W 5310.85

FOUND NW COR. SECTION 3  
S87°30'48"E 44.30 FROM  
STANDARD CORNER. SEE  
NARRATIVE FOR DETAILS  
(WEST 2640)

### NARRATIVE

THIS SURVEY WAS PERFORMED AT THE REQUEST OF JACQUELINE HEART. THE PURPOSE OF THIS SURVEY WAS TO LOCATE AND MARK WITH PROPER MONUMENTS, THE CORNERS OF A TRACT OF LAND WHICH APPEARS ON DEED INSTRUMENT NO. 9903092 AS AN EXCEPTION. THE DESCRIPTION OF THIS TRACT BEGINS AT THE CENTER 1/4 CORNER OF SECTION 2, AND IS CONTROLLED BY THE DIRECTION OF THE NORTH-SOUTH CENTER OF SECTION LINE. TO LOCATE THE CENTER 1/4 CORNER AND THE NORTH-SOUTH CENTER OF SECTION LINE, A DEPENDENT RESURVEY AND SUBDIVISION OF SECTION 2 WAS NECESSARY. DURING THE COURSE OF THIS SURVEY, WE WERE ALSO DIRECTED BY MRS. HEART TO ESTABLISH THE FOLLOWING 1/16TH CORNERS IN SECTION 2 AND 3, NW1/16, CW1/16, CS1/16 AND THE S1/16 BETWEEN SECTIONS 1 AND 2.

A SEARCH WAS MADE OF THE AVAILABLE RECORDS PERTAINING TO THIS SURVEY. FIELD MEASUREMENTS WERE MADE TO LOCATE EXISTING MONUMENTS AND ORIGINAL CORNER EVIDENCE. NEW MONUMENTS WERE SET IN ACCORDANCE WITH THE EVIDENCE FOUND, AND ACCORDING TO THE DEED RECORD, AS SHOWN HEREON.

THE HISTORY OF SURVEYS PERTAINING TO THIS SURVEY ARE AS FOLLOWS:  
THE SOUTH BOUNDARY OF TOWNSHIP 10 SOUTH, RANGE 39 EAST, THE SECOND STANDARD PARALLEL SOUTH, WAS ORIGINALLY SURVEYED BY TIMOTHY W. DAVENPORT, U.S. DEPUTY SURVEYOR, UNDER CONTRACT NO. 102, DATED JULY 20, 1863.

THE ORIGINAL SUBDIVISION OF TOWNSHIP 11 SOUTH, RANGE 39 EAST WAS PERFORMED BY HENRY W. COOKE, U.S. DEPUTY SURVEYOR, UNDER CONTRACT NO. 418, DATED AUGUST 30, 1881.

RECORD SURVEY NO. 10-39-6, PERFORMED BY THOMAS F. LAGIER, P.E., IN 1971. DURING THIS SURVEY, LAGIER FOUND AND ACCEPTED ORIGINAL CORNER EVIDENCE AT THE SW CORNER, S1/4 CORNER AND SE CORNER OF SECTION 34, T.10S., R.39E., W.M.

RECORD SURVEY NO. 11-39-1 WAS A CORNER REMONUMENTATION PROJECT BY THE BUREAU OF LAND MANAGEMENT IN 1972. B.L.M. SURVEYORS FOUND AND REMONUMENTED ORIGINAL CORNER EVIDENCE AT THE SW CORNER AND S1/4 CORNER OF SECTION 2, T.11S., R.39E., W.M.

RECORD LAND PARTITION NO. 1995-06, PERFORMED BY RONALD V. MCKINNIS, P.L.S., IN 1995. DURING THIS PARTITION FOR THIS PARTITION, MCKINNIS ESTABLISHED THE SE CORNER SECTION 35, T.10S., R.39E., W.M. BY LANDOWNER TESTIMONY. THE CORNER RESTORATION SHEET IS FILED AS SURVEY NO. 10-39-159.

WE FOUND ACCEPTABLE ORIGINAL CORNER EVIDENCE AT THE E1/4 CORNER AND THE SE CORNER OF SECTION 2. BY EXPANDING OUR SEARCH, WE ALSO FOUND ACCEPTABLE ORIGINAL CORNER EVIDENCE AT THE S1/4 CORNER OF SECTION 34, T.10S., R.39E., W.M., AND VERIFIED ITS POSITION BY LOCATING THE SW CORNER OF SAID SECTION 34.

WE ALSO FOUND ORIGINAL CORNER EVIDENCE AT THE NW CORNER OF SECTION 3, T.11S., R.39E., W.M. AT THIS CORNER, WE FOUND A BASALT STONE, 18"x18"x12" PROPERLY ORIENTED, WITH 3 GROOVES ON THE EAST FACE AND 3 GROOVES ON THE WEST FACE. WE ALSO FOUND DETEIORATED REMAINS OF AN ORIGINAL PINE BEARING TREE WITH A K-TAG ATTACHED. BEARING TREE WAS 539'W, 58 FEET FROM CORNER. THE K-TAG WAS DATED 1984. SINCE THIS WAS NOT A CONTROLLING CORNER FOR THIS SURVEY, I DID NOT REMONUMENT IT.

WE SEARCHED FOR, BUT DID NOT FIND ACCEPTABLE CORNER EVIDENCE AT THE NW CORNER, W1/4 CORNER AND THE NE CORNER OF SECTION 2.

THE NW CORNER OF SECTION 2: THIS CORNER IS LOST POSSIBLY DUE TO FENCE BUILDING ACTIVITIES. I ESTABLISH THIS CORNER AT SINGLE PROPORTIONATE MEASURE BETWEEN THE FOUND MONUMENTS AT THE S1/4 CORNER AND SE CORNER OF SECTION 34, T.10S., R.39E., W.M.

THE W1/4 CORNER OF SECTION 2: THIS CORNER IS LOST POSSIBLY DUE TO ROAD CONSTRUCTION IN THE IMMEDIATE AREA. I ESTABLISH THIS CORNER AT SINGLE PROPORTIONATE MEASURE BETWEEN THE FOUND B.L.M. MONUMENT AT THE SW CORNER OF SECTION 2 AND THE ESTABLISHED NW CORNER OF SECTION 2.

THE NE CORNER OF SECTION 2: AFTER SEARCHING THE AREA, WE FOUND NO EVIDENCE OF THE ORIGINAL CORNER. I ESTABLISHED ITS POSITION AT SINGLE PROPORTIONATE MEASURE BETWEEN THE FOUND MONUMENTS AT THE SOUTHWEST AND SOUTHEAST CORNERS OF SECTION 35, T.10S., R.39E. HOWEVER, DURING THE MONUMENTATION PROCESS, AS WE WERE BUILDING A MOUND OF STONE AROUND THE PIPE, WE FOUND THE ORIGINAL MARKED STONE, THAT WE HAD MOVED INTO THE MOUND. WE WERE UNABLE TO DETERMINE ITS ORIGINAL POSITION. WE KNOW THAT THE STONES USED IN THE MOUND, INCLUDING THE MARKED STONE WERE COLLECTED FROM WITHIN ARM'S REACH OF THE PROPORTIONATE POSITION. AFTER EXAMINATION OF THE SOIL LINE ON THE MARKED STONE, IT WAS CLEAR THAT THIS STONE WAS NOT SET IN THE GROUND AS DESCRIBED IN THE G.L.O. FIELD NOTES, BUT HAD BEEN LYING LOOSE ON THE GROUND. AS I STILL HAD NO ACCEPTABLE EVIDENCE OF THE ORIGINAL POSITION OF THIS STONE, I DECLARED THIS CORNER LOST, AND ESTABLISHED ITS POSITION AT PROPORTIONATE MEASURE, AS STATED ABOVE.

WE ALSO SEARCHED FOR, BUT FOUND NO EVIDENCE OF ANYTHING THAT MAY HAVE BEEN USED OR RELIED UPON AS THE C1/4 CORNER.

AFTER LOCATING OR ESTABLISHING THE CONTROLLING CORNERS FOR SECTION 2, I SUBDIVIDED THE SECTION IN THE USUAL MANNER IN ORDER TO MONUMENT THE CENTER 1/4 CORNER AND THE 1/16TH CORNERS, AS SHOWN HEREON.

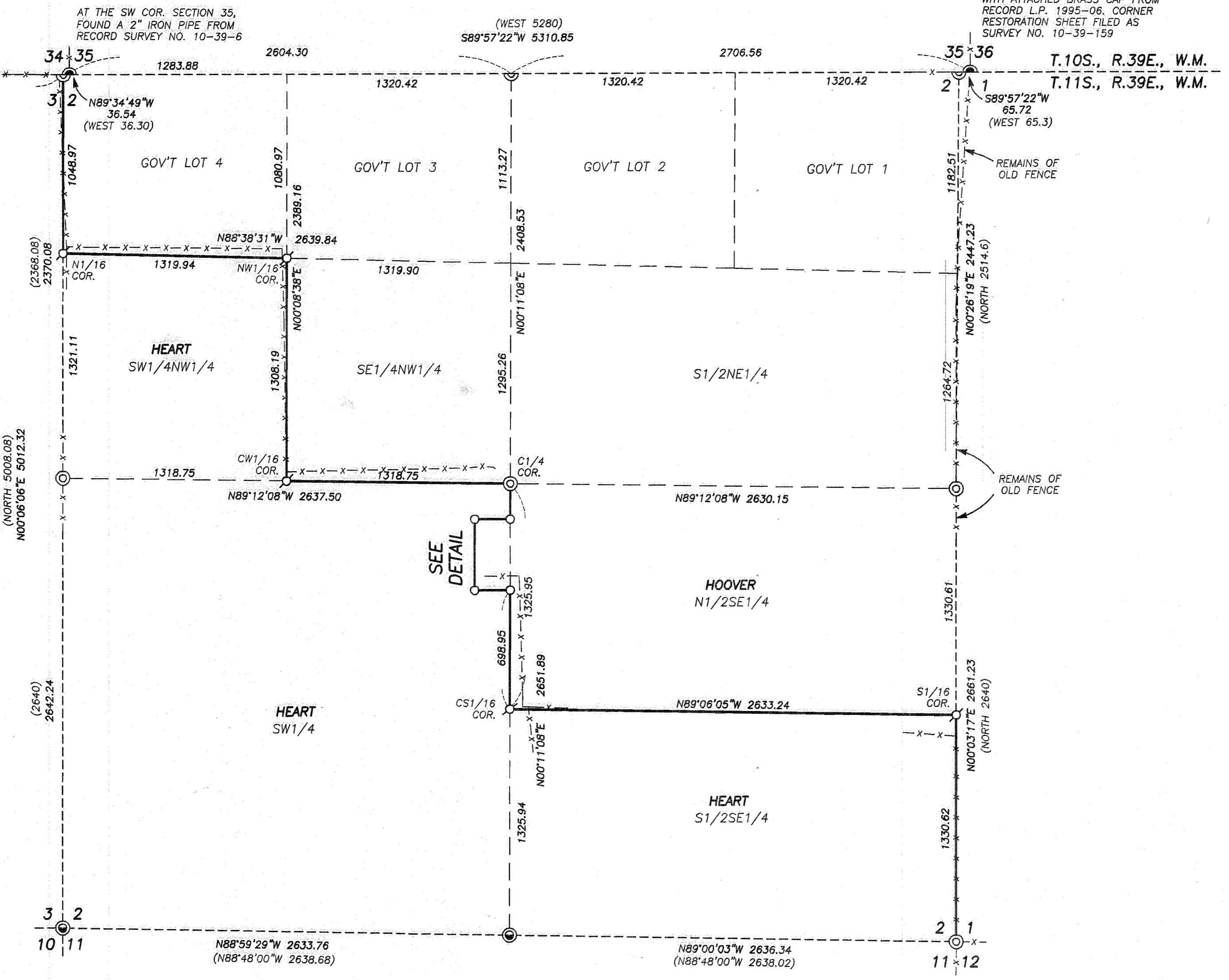
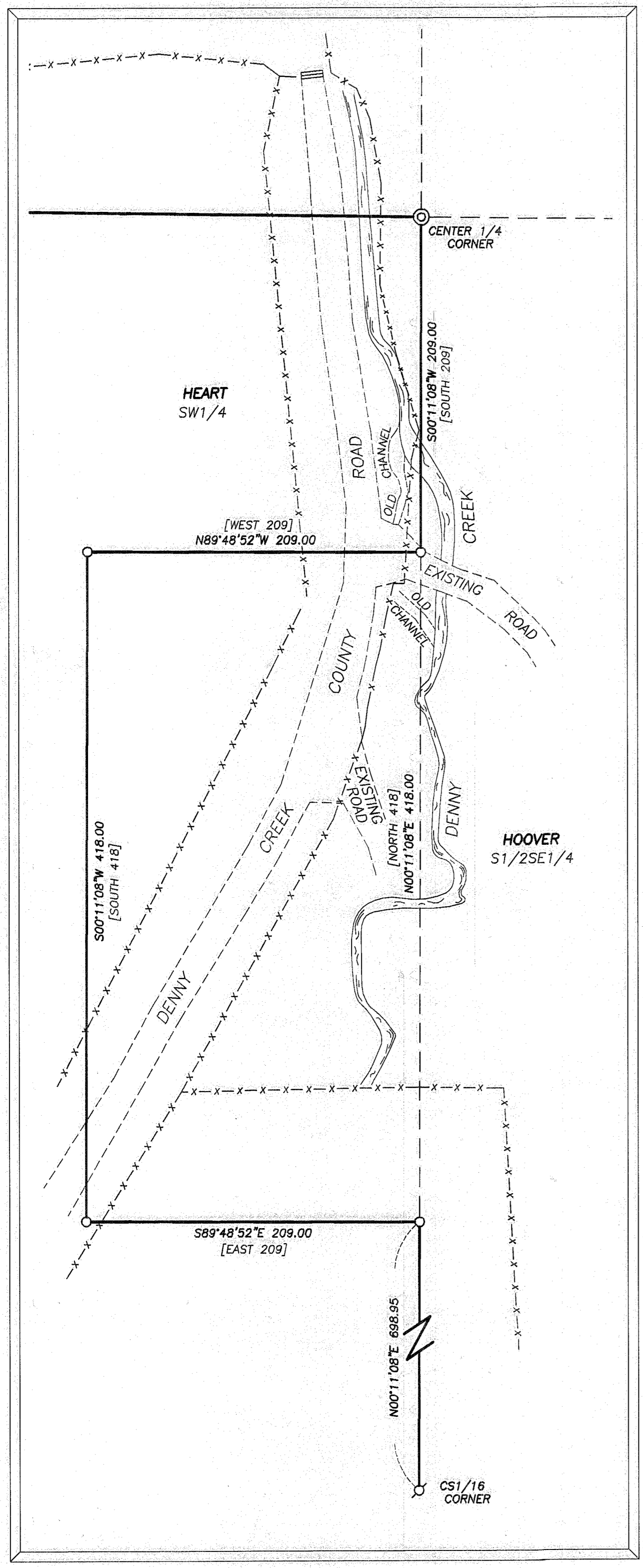
WE SET THE CORNERS OF THE TRACT OF LAND DESCRIBED IN SAID INSTRUMENT NO. 9903092 ACCORDING TO THE EVIDENCE FOUND AND THE DEED RECORD, AS SHOWN HEREON.

WE MADE MEASUREMENTS TO LOCATE THE VISIBLE IMPROVEMENTS IN THE IMMEDIATE VICINITY OF THE TRACT DESCRIBED IN SAID INSTRUMENT NO. 9903092. WE LOCATED THE EXISTING SHOULDERS OF DENNY CREEK COUNTY ROAD NO. 773, DENNY CREEK AND THE EXISTING FENCES AND ROADS, AS SHOWN HEREON.

SEE CORNER RESTORATION RECORDS FILED IN THE OFFICE OF THE BAKER COUNTY SURVEYOR, WHICH ARE AN INTEGRAL PART OF THIS SURVEY, DETAILING NEW MONUMENTS SET WITH NEW CORNER ACCESSORIES.

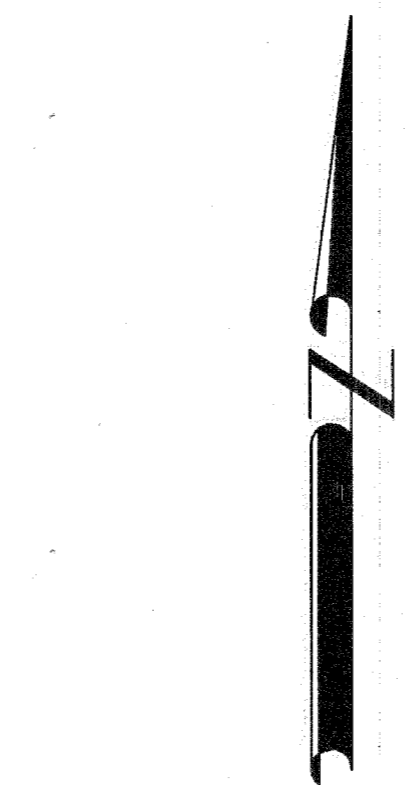
### DETAIL

SCALE: 1"=60'



### LEGEND

- ⊙ FOUND 2 1/2" GALV. IRON PIPE WITH ATTACHED 3" B.L.M. BRASS CAP AND ACCESSORIES AS SET IN 1972 FROM ORIGINAL EVIDENCE SEE RECORD SURVEY NO. 11-39-1
- ⊙ FOUND RECORD MONUMENT AS NOTED
- ⊙ SET 1 1/2" GALV. IRON PIPE WITH ATTACHED BAGETT, GRIFFITH & BLACKMAN BRASS CAP SEE CORNER RESTORATION RECORDS
- ⊙ SET 5/8"x30" IRON PIN WITH ATTACHED ALUMINUM CAP, MARKED BOB SURVEY MARKER, AND WITH APPROPRIATE 1/16 CORNER DESIGNATIONS
- ⊙ SET 5/8"x30" IRON PIN WITH ATTACHED YELLOW PLASTIC CAP MARKED BOB SURVEY MARKER
- ( ) G.L.O. RECORD BEARING AND DISTANCE
- [ ] DEED RECORD BEARING AND DISTANCE
- x-x-x EXISTING FENCE LINE AS OF JULY 10, 2008
- ≡ CATTLE GUARD



**BASIS OF BEARINGS**  
GEODEIC NORTH  
G.P.S. OBSERVATION TAKEN NEAR THE WEST LINE OF SECTION 2, T.11S., R.39E., W.M.

### REFERENCES

- RECORD MAP OF SURVEY NO.'S 10-39-6, 10-39-83, 10-39-159 & 11-39-1
- DEED RECORD INSTRUMENT NO.'S 9903092 & 1230150
- DEED RECORD BOOK 106 PAGE 152
- RECORD LAND PARTITION PLAT NO.'S 1995-06, 2000-08 & 2007-05
- G.L.O. AND B.L.M. FIELD NOTES



<b>BAGETT, GRIFFITH &amp; BLACKMAN</b> 217 N. Canyon Blvd. John Day, Oregon		
MAP OF SURVEY OF A TRACT AND DEPENDENT RESURVEY AND SUBDIVISION OF SECTION 2, T.11S., R.39E., W.M. BAKER COUNTY, OREGON		
SURVEYED FOR	JACQUELINE HEART	
SURVEYED BY	JLH, MCS & DEM	7/10/2008
Scale: 1"= 500'	Drawn by: JLH	

FILED July 21, 2008  
BAKER COUNTY SURVEYOR  
NO. 11-39-157