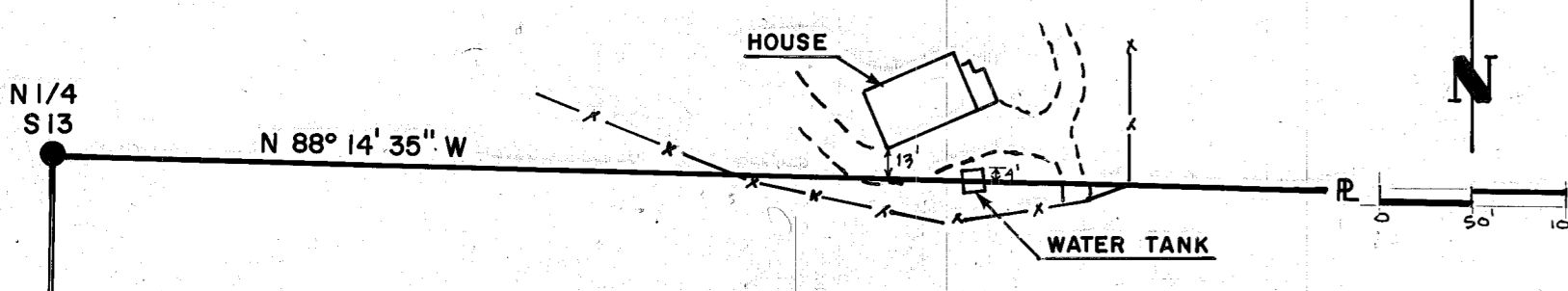


DETAIL OF JOHNSTON CABIN & BUILDINGS  
1"=100'



DETAIL OF CHAPMAN HOME & WATER TANK  
1"=100'

**NARRATIVE OF SURVEY**—PERFORMED AT REQUEST OF U.S.D.A.—FOREST SERVICE

THIS DEPENDENT RESURVEY AND SUBDIVISIONAL SURVEY OF PORTIONS OF SECTIONS 12, 13, 14, 15, 22, 23, 24, 25, 26 & 36, T.11S., R.39E., W.M. WAS PERFORMED JOINTLY BY WILLIAM R. WELLS, ORLS 1106, AND WILLIAM L. HANLEY, ORLS 1639 UNDER JOINT VENTURE CONTRACT WITH THE USDA-FOREST SERVICE. THE PURPOSE OF THE SURVEY WAS TO MONUMENT CERTAIN CORNERS AND CONNECTING LINES WHICH DEFINE THE BOUNDARY BETWEEN THE PUBLIC DOMAIN, ADMINISTERED BY THE USDA-FOREST SERVICE, AND LAND HELD UNDER PRIVATE OWNERSHIP. THE POSITIONS OF SAID CORNERS AND LINES WERE DETERMINED BY PROPERLY SUBDIVIDING THE AFFECTED SECTIONS INTO THEIR REGULAR ALIQUOT PARTS. CERTAIN ADDITIONAL OFF-BOUNDARY SUBDIVISIONAL CORNERS WERE ESTABLISHED TO MARK THE CENTER OF SECTIONS SUBDIVIDED OR OTHER SUBDIVISIONAL CORNERS. ADDITIONALLY, SEVERAL ORIGINAL SURVEY CORNERS WERE DECLARED LOST AFTER DILIGENT SEARCH AND RE-ESTABLISHED AT THEIR PROPER PROPORTIONAL POSITIONS AS SHOWN ON THIS PLAT. CERTIFIED RECORD OF CORNER MONUMENTATION FORMS WERE PREPARED FOR ALL CORNERS ESTABLISHED, MONUMENTED OR MAINTAINED TO U.S.F.S. MONUMENT STANDARDS DURING THE COURSE OF THIS SURVEY AND ARE FILED SEPARATELY.

TWO COMPLETE AND INDEPENDENT 2-MAN SURVEY CREWS PERFORMED THE FIELD WORK REPRESENTED BY THIS RECORD, EACH OF WHICH WAS STAFFED BY ONE REGISTERED SURVEYOR AND ONE EXPERIENCED SURVEYOR'S HELPER. FIELD INSTRUMENTS USED WERE ONE 6-SECOND AND ONE 20-SECOND THEODOLITE IN CONCERT WITH ELECTRONIC DISTANCE MEASURING EQUIPMENT. ALL PROCEDURAL AND PROFESSIONAL DECISIONS WERE EVALUATED INDEPENDENTLY BY EACH SURVEYOR AND THEN DISCUSSED JOINTLY TO PRODUCE THIS RECORD OF BOUNDARY ESTABLISHMENT. BEARINGS ARE BASED ON SOLAR OBSERVATION AND DISTANCES IN FOUR MAJOR CONTROL LOOPS WERE REDUCED TO AVERAGE 5000 FT. ELEVATION DATUM. CORNER MONUMENTS ARE 2 1/2-INCH ALUMINUM CAPS SECURELY ATTACHED TO 2-INCH INSIDE DIAMETER ALUMINUM PIPES 30 INCHES LONG WITH FLARED LEGS. BOUNDARY LINES WERE ESTABLISHED BY OFFSET MEASUREMENT FROM SURVEY CONTROL AND ARE MARKED WITH 6-FOOT LONG STEEL FENCE POSTS SPACED AT APPROXIMATELY 200 FOOT INTERVALS WITH U.S.F.S. BOUNDARY SIGNS 54-2 ATTACHED.

**NARRATIVE OF GUIDE MERIDIAN RETRACEMENT**

THE SECTION CORNER COMMON TO SECTIONS 24 AND 25 ONLY, ON THE GRANDE RHONDE GUIDE MERIDIAN W.M., IS REESTABLISHED ON THE GUIDE MERIDIAN BETWEEN THE RECOVERED ADJACENT QUARTER SECTION CORNER NORTH AND PREVIOUSLY REMONUMENTED QUARTER SECTION CORNER SOUTH. LATITUDINAL POSITION WAS DETERMINED BY PROPORTIONATE MEASUREMENT USING COOKE'S 1882 RECORD OF GUIDE LINE RETRACEMENT AND MEASUREMENTS MADE THIS SURVEY BETWEEN THE QUARTER SECTION CORNER TO SECTION 25 ONLY, IN T.11S., R.39E., W.M., AND THE PREVIOUSLY REMONUMENTED SECTION CORNER TO SECTIONS 19 AND 30 ONLY, IN T.11S., R.40E., W.M. THE FOUND QUARTER SECTION CORNER TO SECTION 30 ONLY, IN T.11S., R.40E., W.M., WAS NOT USED IN THIS REESTABLISHMENT BECAUSE NO RECORD OF ORIGINAL ESTABLISHMENT WAS FOUND.

THE QUARTER SECTION CORNERS TO SECTION 12 ONLY AND TO SECTION 13 ONLY AND THE SECTION CORNER TO SECTIONS 12 AND 13 ONLY, ALL ON THE GRANDE RHONDE GUIDE MERIDIAN, ARE REESTABLISHED ON THE GUIDE MERIDIAN BETWEEN THE RECOVERED ADJACENT SECTION CORNER SOUTH AND THE PREVIOUSLY REMONUMENTED ADJACENT SECTION CORNER NORTH. LATITUDINAL POSITION WAS DETERMINED BY PROPORTIONATE MEASUREMENT USING COOKE'S 1882 RECORD OF GUIDE MERIDIAN RETRACEMENT AND MEASUREMENTS MADE THIS SURVEY BETWEEN THE PREVIOUSLY REMONUMENTED SECTION CORNER TO SECTIONS 1 AND 12 ONLY, IN T.11S., R.39E., W.M., AND THE SECTION CORNER COMMON TO SECTIONS 18 AND 19 ONLY (PREVIOUSLY REMONUMENTED), IN T.11S., R.40E., W.M. THE FOUND CORNER MONUMENT TO SECTIONS 7 AND 18, T.11S., R.40E., W.M., WAS NOT USED BECAUSE IT WAS PREVIOUSLY REESTABLISHED CONTRARY TO INSTRUCTIONS IN THE BLM MANUAL OF INSTRUCTIONS FOR THE SURVEY OF PUBLIC LANDS.

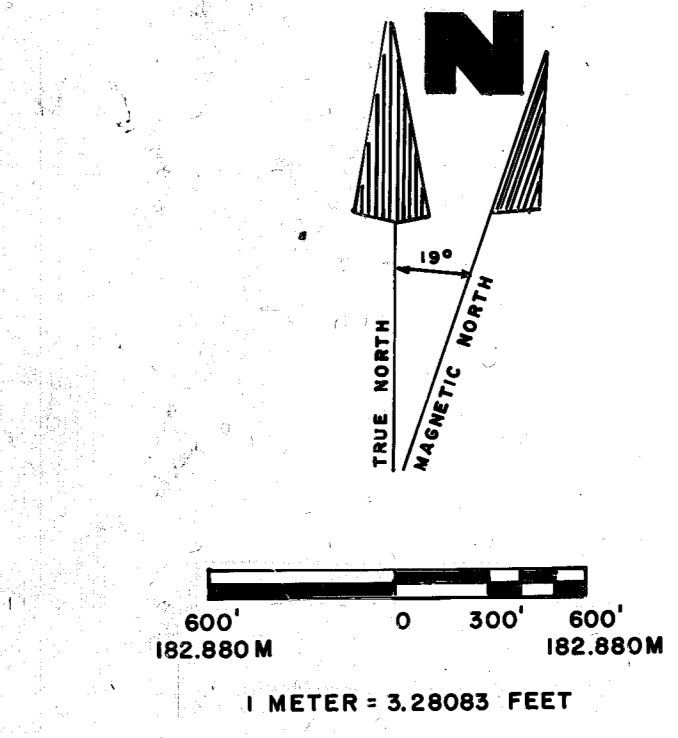
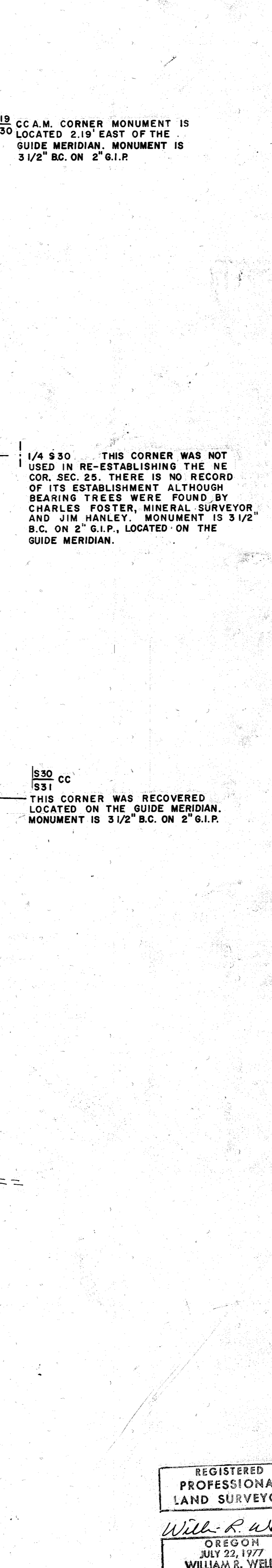
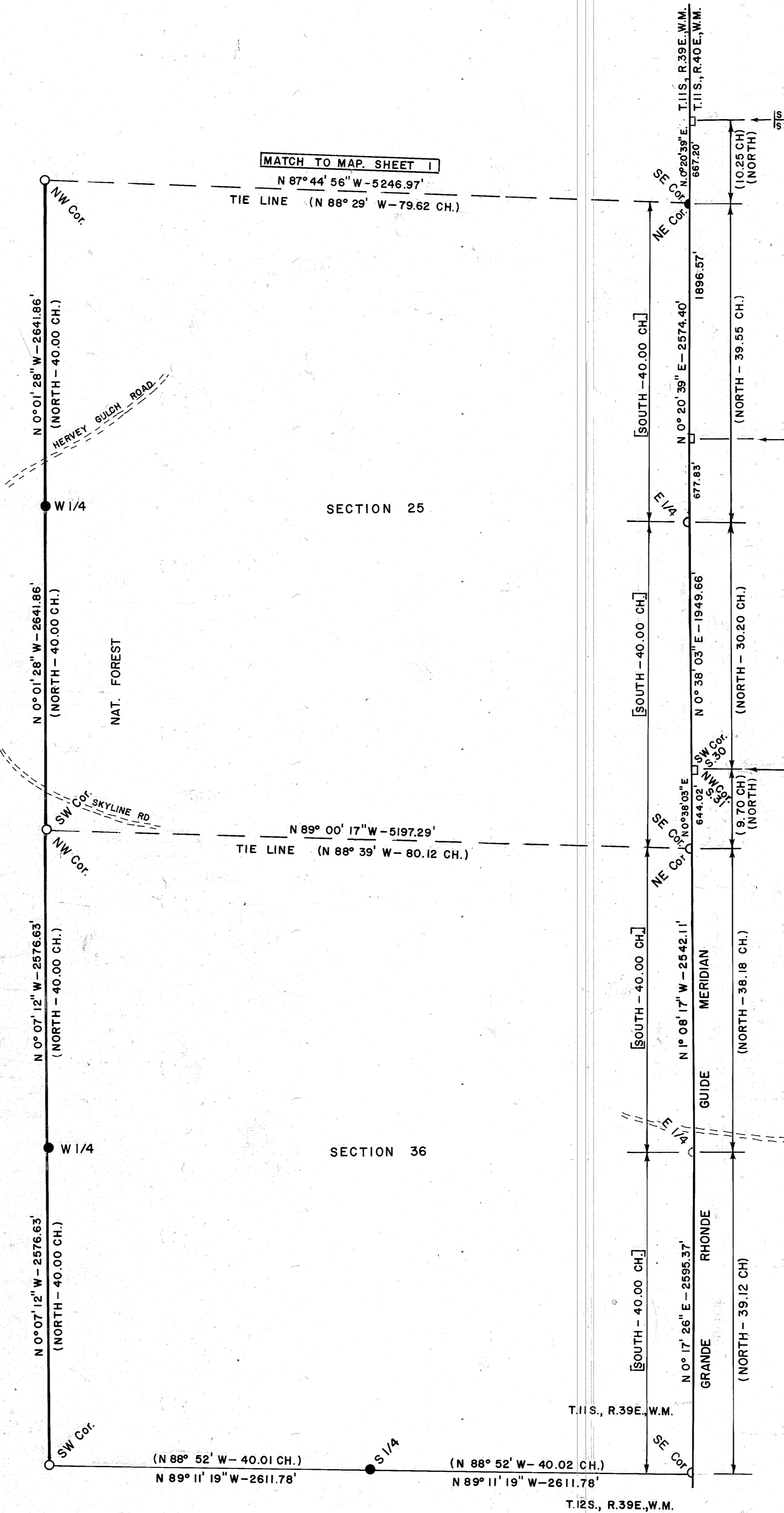
**HISTORY OF SURVEYS**

THE GUIDE MERIDIAN BETWEEN T.11S., RANGES 39 AND 40 E., W.M. WAS FIRST SURVEYED BY W.H. ODELL, U.S. DEPUTY SURVEYOR, UNDER CONTRACT NO. 105, DATED JULY 22, 1864, DURING AUGUST AND SEPTEMBER, 1864. IN APRIL 1882, HENRY COOKE, U.S. DEPUTY SURVEYOR, RETRACED THE GUIDE MERIDIAN RECOVERING THE CORNERS ESTABLISHED BY ODELL, WHICH NOW APPLY TO T.11S., R.39E., W.M. AND ESTABLISHED CORNERS ON THE GUIDE MERIDIAN WHICH WILL APPLY TO T.11S., R.40E., W.M. ONLY. COOKE ALSO SUBDIVIDED T.11S., R.39E., W.M. COOKE'S WORK WAS DONE UNDER CONTRACT NO. 418, DATED AUGUST 30, 1882.

IN 1904, CHARLES FOSTER, DEPUTY MINERAL SURVEYOR, DURING HIS SURVEYS FOR MS 611 AND 612, CLAIMS TO HAVE RECOVERED THE ESTABLISHED W/4 OF SECTION 30, T.11S., R.40E., W.M. AND SUBDIVIDED SECTION 30, T.11S., R.40E., W.M. BY LEGAL SUBDIVISION. THE OREGON STATE OFFICE OF BLM HAS BEEN UNABLE TO FIND ANY RECORD OF THE ESTABLISHMENT OF THE 1/4 CORNERS FOR SECTIONS ON THE WEST SIDE OF T.11S., R.40E., W.M.

IN 1961 AND 1965, JAMES HANLEY DID SURVEYS AND REMONUMENTATION WORK IN T.11S., R.40E., W.M. PART OF JAMES HANLEY'S WORK ABUTTS THE GUIDE MERIDIAN COMMON TO T.11S., R.39 AND R.40E., W.M.

IN 1971-72, REMONUMENTATION WORK WAS DONE IN T.11S., R.39E., W.M. BY BLM CADASTRAL SURVEYOR PETERSON, UNDER GROUP 350 INSTRUCTIONS, DATED MAY 6, 1957.



BEARINGS ARE BASED ON SOLAR OBSERVATION NEAR E/4 S 36, T.11S., R.39E., W.M. AVERAGE CONVERGENCY IS 0° 00' 50\"/>

**LEGEND**

- SET 2 1/2" x 30" ALUM. PIPE WITH 2 1/2" ALUM. CAP BY TRAVERSE SURVEY
- ⊗ SET 2 1/2" x 30" ALUM. PIPE WITH 2 1/2" ALUM. CAP FROM EXISTING ORIGINAL EVIDENCE.
- FOUND 3" BLM BRASS CAP ON 2 1/2" FLANGED G.I.P., REMONUMENTED BY BLM FROM EXISTING ORIGINAL EVIDENCE.
- MONUMENT BY JAMES HANLEY, AS NOTED.
- [X] RECORD MEASUREMENTS BY W.H. ODELL, U.S. DEPUTY SURVEYOR, CONTRACT NO. 105, DATED JULY 22, 1864.
- (XOX) RECORD MEASUREMENTS BY HENRY COOKE, U.S. DEPUTY SURVEYOR, CONTRACT NO. 418, DATED AUGUST 30, 1881.
- x— FENCE NEAR TRAVERSE LINES.
- ROAD CROSSINGS ON TRAVERSE LINES.
- NATIONAL FOREST BOUNDARY POSTED ACCORDING TO THIS CONTRACT.

**NOTES**

FOR ADDITIONAL INFORMATION ON CORNERS MONUMENTED OR REMONUMENTED, SEE CERTIFIED RECORD OF LAND CORNER MONUMENTATION FORMS FILE WITH THIS PLAT.  
FIELD BOOK REFERENCE: FIELD BOOKS 1 THROUGH 5 OF THE RANCHERIA CADASTRAL SURVEY.

**SURVEYOR'S CERTIFICATE**

WE, WILLIAM R. WELLS AND WILLIAM L. HANLEY, REGISTERED PROFESSIONAL LAND SURVEYORS, IN THE STATE OF OREGON, DO HEREBY CERTIFY THAT THIS PLAT, AND THE CORNER CERTIFICATES ATTACHED, ARE A CORRECT REPRESENTATION OF A SURVEY PERFORMED BY US DURING THE MONTHS OF JULY AND AUGUST, 1986, AT THE REQUEST OF THE U.S.D.A. FOREST SERVICE. SAID SURVEY AND PLAT WERE PREPARED IN ACCORDANCE WITH THE STATUTES OF THE STATE OF OREGON AND THE ARTICLES OF THE CONTRACT.

REGISTERED PROFESSIONAL LAND SURVEYOR  
WILLIAM R. WELLS  
OREGON JULY 22, 1977  
WILLIAM R. WELLS  
1106

REGISTERED PROFESSIONAL LAND SURVEYOR  
WILLIAM L. HANLEY  
OREGON JULY 14, 1978  
WILLIAM L. HANLEY  
1639

FILED Sept. 15, 1986  
BAKER COUNTY SURVEYOR  
SURVEY NO. 11-39-21

BILL HANLEY-BILL WELLS JOINT VENTURE P.O. BOX 824 BAKER, OREGON 97814 PHONE: 503-523-4325		PROJECT: RANCHERIA CADASTRAL SURVEY SECTIONS 13, 14, 15, 22, 23, 24, 25, 26 & 36, T.11S., R.39E., W.M., BAKER COUNTY, OREGON
DATE 8-25-86	DR. BY SKM	WALLOWA-WHITMAN NAT. FOREST
CK. BY W.R.W. & W.L.H.	NO.	CONTRACT NO. 53-04HI-6-0055N