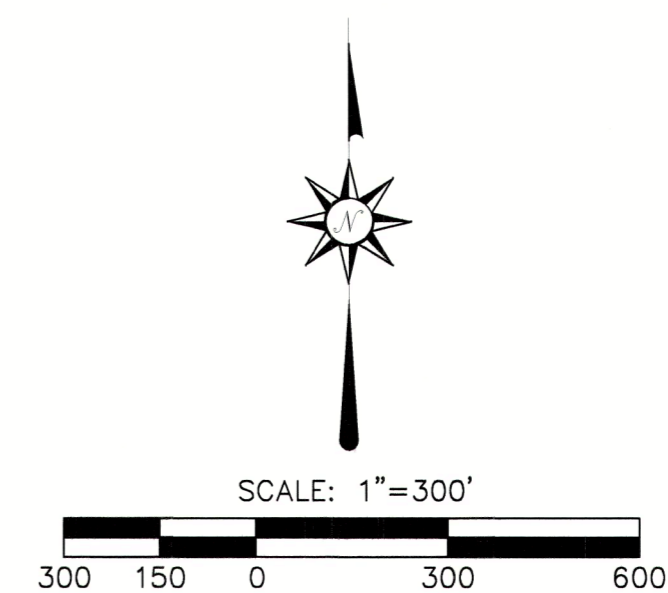
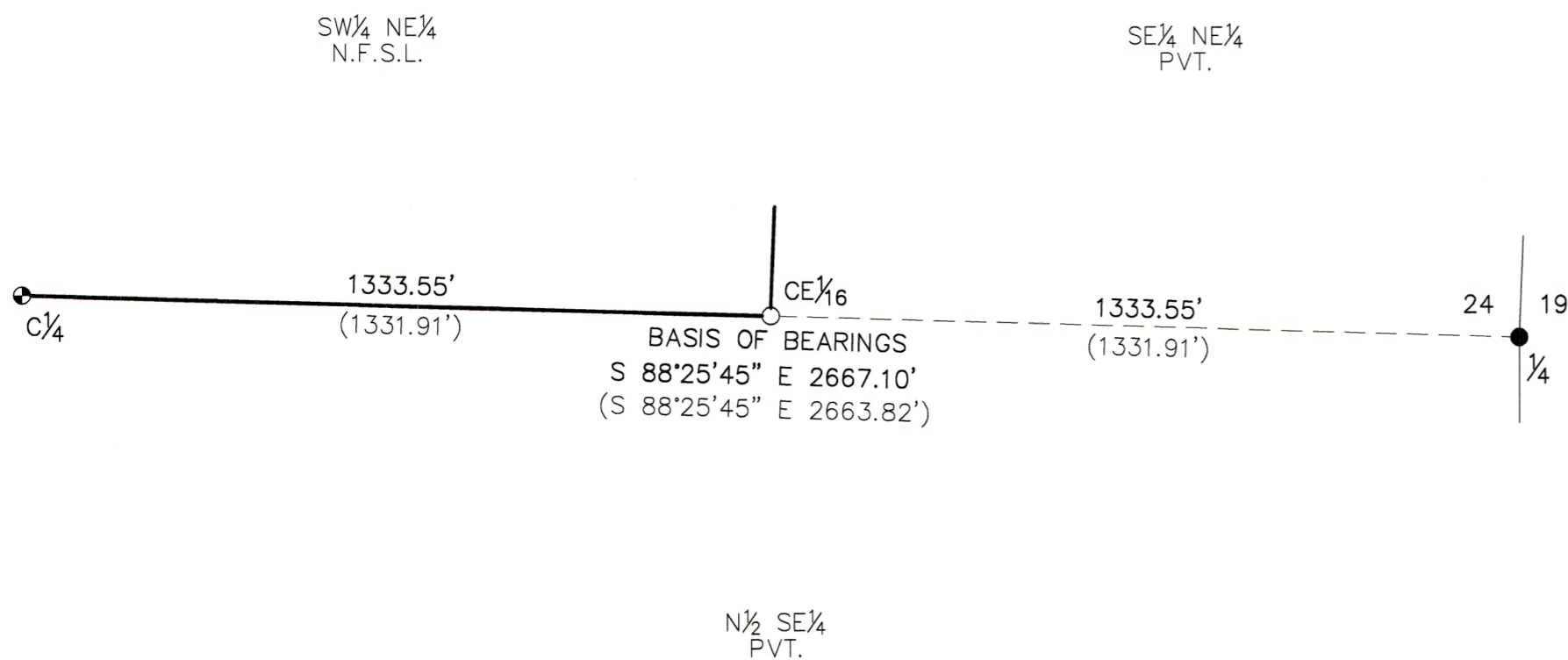


DEPENDENT RESURVEY AND SUBDIVISION
 OF A PORTION OF SECTION 24,
 TOWNSHIP 11 SOUTH, RANGE 38 EAST
 WILLAMETTE MERIDIAN
 BAKER COUNTY, OREGON



NARRATIVE

THE PURPOSE OF THIS SURVEY IS TO LOCATE, MONUMENT, AND MARK THE BOUNDARIES OF NATIONAL FOREST SYSTEM LANDS LOCATED IN SECTION 24, TOWNSHIP 11 SOUTH, RANGE 38 EAST, WILLAMETTE MERIDIAN, BAKER COUNTY, OREGON.

THIS SURVEY WAS CONDUCTED USING GLOBAL POSITIONING SYSTEM EQUIPMENT AND CONVENTIONAL EQUIPMENT. A SINGLE BASE SYSTEM WAS INCORPORATED FOR SURVEY CONTROL AND LOCATING CORNER POSITIONS USING REDUNDANT MEASUREMENTS. ALL GPS DATA WERE DOWNLOADED INTO TRIMBLE BUSINESS CENTER SOFTWARE AND CORRECTED USING OPUS. THE OPUS SOLUTION REPORTED A COMBINED SCALE FACTOR OF 0.99968542.

THE SECTION SUBDIVISION SHOWN HEREON WAS PERFORMED IN ACCORDANCE WITH THE PROCEDURES SET FORTH IN THE 2009 BLM MANUAL OF SURVEYING INSTRUCTIONS.

FOR MONUMENTATION RECORDS SEE THE CERTIFIED RECORD OF LAND CORNER MONUMENTATION SHEETS FILED SEPARATELY IN THE BAKER COUNTY SURVEYOR'S OFFICE.

THE RANGE LINE OF TOWNSHIP 11 SOUTH, RANGES 38 & 39 EAST WAS ESTABLISHED BY EUGENE P. MCCORNACK UNDER GENERAL LAND OFFICE CONTRACT NO. 398, APPROVED ON MARCH 25TH, 1882.

EAST 1/4 CORNER OF SECTION 24 WAS REMONUMENTED BY CADASTRAL SURVEYORS: PETER A. PETERSON, ALBERT J. GARRISON AND OWEN C. CHATTERS, II; UNDER SPECIAL INSTRUCTIONS DATED MAY 3, 1957, AND APPROVED MARCH 28, 1977.

THE SUBDIVISION OF SECTION 24 WAS PERFORMED BY JAMES H. HAMBLETON, PLS 645 AS SHOWN ON MAP OF SURVEY NO. 11-38-45, RECORDED ON DECEMBER 19TH, 1974 FOR THE U.S. FOREST SERVICE, CONTRACT NO. 004345N.

THE NATIONAL FOREST BOUNDARY SHOWN HEREON WAS MARKED WITH ALUMINUM POSTS AND 54-2 SIGNS. EACH MONUMENT SET HAS GUARD POSTS WITH 54-2 & 54-9 SIGNS ATTACHED.

REFERENCES

- WARRANTY DEED TO THE UNITED STATES OF AMERICA, RECORDED ON SEPTEMBER 22, 1934 IN DEED BOOK 120, PAGE 91.
- WARRANTY DEED TO THE UNITED STATES OF AMERICA RECORDED ON DECEMBER 29, 2000 AS DOCUMENT NO. 00520314B,
- GENERAL LAND OFFICE SURVEY OF TOWNSHIP 11 SOUTH, RANGES NO. 36, 37 & 38 EAST, WILLAMETTE MERIDIAN, CONTRACT NO. 398, APPROVED ON MARCH 25TH, 1882.
- BUREAU OF LAND MANAGEMENT FIELD NOTES OF THE REMONUMENTATION OF CERTAIN ORIGINAL CORNER POINTS, TOWNSHIP 11 SOUTH, RANGE 39 EAST, WILLAMETTE MERIDIAN. UNDER SPECIAL INSTRUCTIONS APPROVED ON MAY 6TH, 1957.
- MAP OF SURVEY 11-38-45, PERFORMED BY PLS 645 AND RECORDED AT BAKER COUNTY SURVEYOR'S OFFICE ON DECEMBER 19, 1974.
- CORNER CERTIFICATE FILED ON DECEMBER 19, 1974 IN BAKER COUNTY SURVEYOR'S RECORDS AS SURVEY NO. 11-38-54.

BASIS OF BEARINGS

THE BASIS OF BEARINGS IS THE EAST-WEST CENTER LINE OF SECTION 24 (S 88°25'45" E) TOWNSHIP 11 SOUTH, RANGE 38 EAST, WILLAMETTE MERIDIAN, AS SHOWN ON THE MAP OF SURVEY 11-38-45.

DISTANCES SHOWN HEREON ARE GROUND DISTANCES.

LEGEND


- FOUND BRASS CAP, PLS 654
- FOUND BLM BRASS CAP
- SET 3/4" ALUMINUM CAP ON 2 1/2"x30" PIPE WITH STANDARD 1/6" CORNER MARKINGS, PLS 91693, 2022
- NATIONAL FOREST BOUNDARY LINE
- - - - SECTION SUBDIVISION LINE
- N.F.S.L. NATIONAL FOREST SYSTEM LANDS
- PVT. PRIVATE LANDS
- () RECORD DIMENSIONS, MOS# 11-38-45

REGISTERED
 PROFESSIONAL
 LAND SURVEYOR

Robert C. Moyers
 OREGON
 SEPTEMBER 11, 2018
 ROBERT C. MOYERS
 91693

FILED December 14, 2022 RENEWS 12/31/2022
 BAKER COUNTY SURVEYOR
 SURVEY NO. 11-38-192

I CERTIFY THAT THIS SURVEY WAS PERFORMED AT THE REQUEST OF THE WALLOWA-WHITMAN NATIONAL FOREST.
S. P. M. K. 12/12/2022
 FOREST SUPERVISOR DATE

UNITED STATES DEPARTMENT OF AGRICULTURE FOREST SERVICE REGION 6 - WALLOWA-WHITMAN NATIONAL FOREST 1550 DEWEY AVE., SUITE A, BAKER CITY, OREGON 97814 - (541) 523-1281	
 FOREST SERVICE DEPARTMENT OF AGRICULTURE	SURVEY FOR WALLOWA-WHITMAN NATIONAL FOREST LOCATED IN SECTION 24 TOWNSHIP 11 SOUTH, RANGE 38 EAST WILLAMETTE MERIDIAN BAKER COUNTY, OREGON SURVEY COMPLETED SEPTEMBER 20, 2022
DRAWN BY: TJQ	CHECKED BY: RCM
SCALE: 1"=300'	SHEET 1 of 1