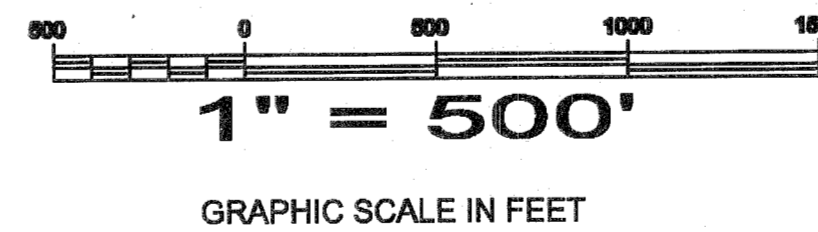
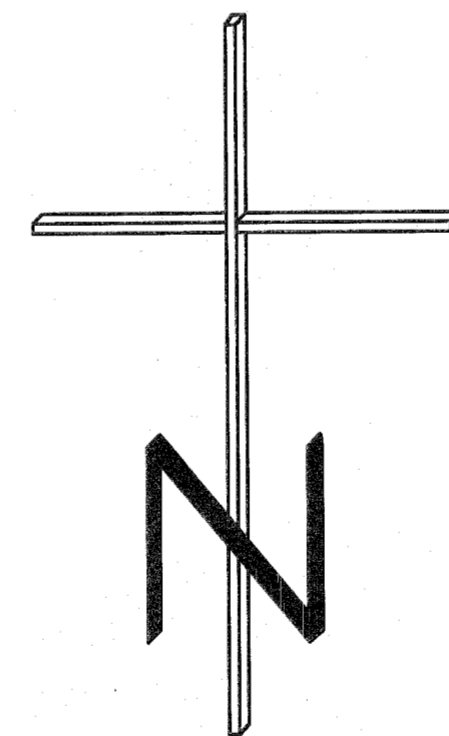
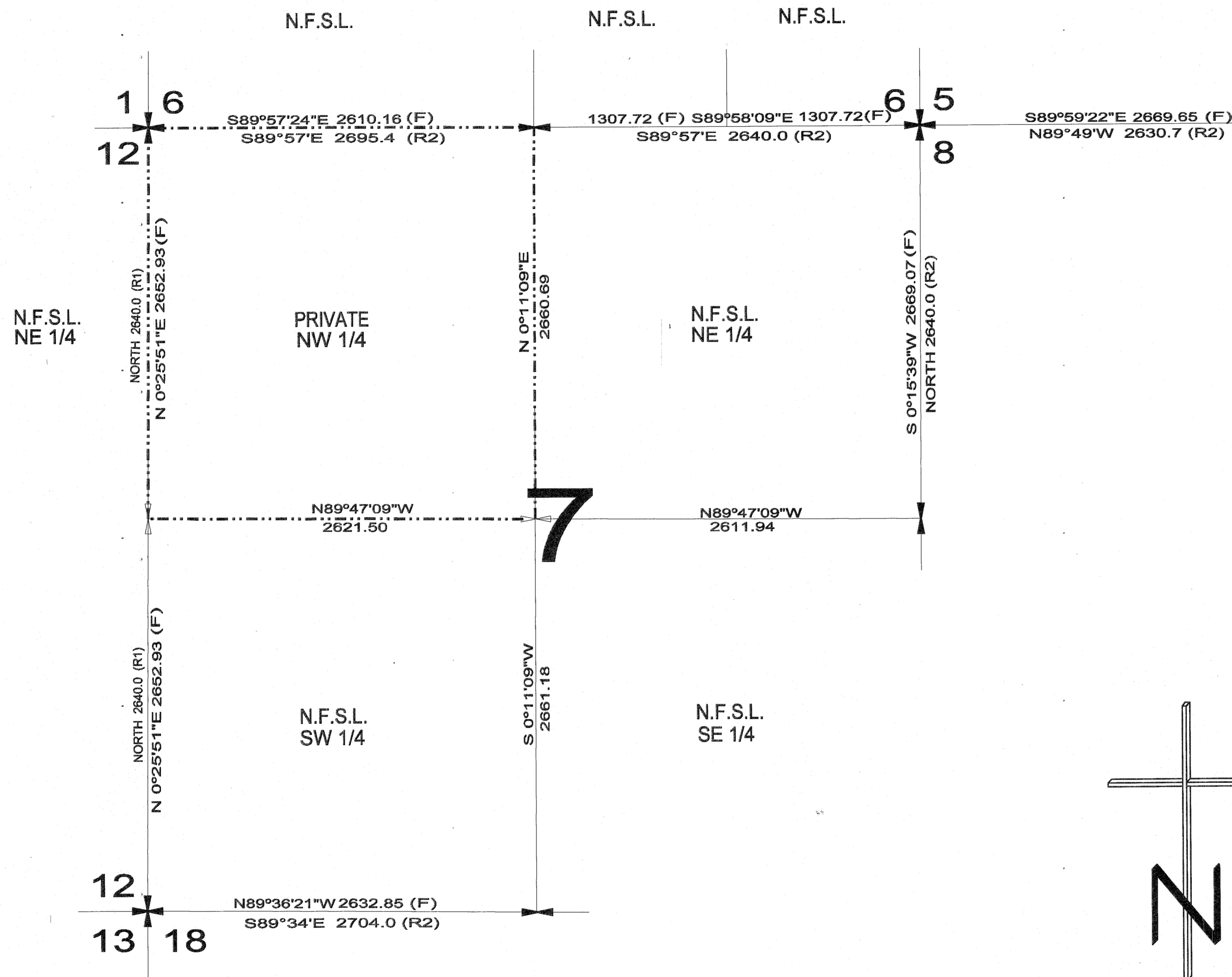


RUSTY BULL CADASTRAL SURVEY

WALLOWA-WHITMAN NATIONAL FOREST

SHEET 2



LEGEND

- (F) = FOUND OR MEASURED.
- (R1) = RECORD - GLO VOLUME R 246, 1881
- (R2) = RECORD - GLO VOLUME R 257, 1881
- (R3) = RECORD - GLO VOLUME R 252, 1881
- = SET 2 1/2 X 30" ALUMINUM PIPE WITH 3" CAP FOR SECTION CORNER.
- = FOUND MONUMENT AS SHOWN ON CORNER MONUMENTATION FORM
- = SET 2 1/2 X 30" ALUMINUM PIPE WITH 3" CAP FOR 1/4 CORNER.
- = FOUND MONUMENT AS SHOWN ON CORNER MONUMENTATION FORM
- = SET 2 1/2 X 30" ALUMINUM PIPE WITH 3" CAP FOR 1/16 CORNER.
- = FOUND 1/16 CORNER AS SHOWN ON CORNER MONUMENTATION FORM
- = FENCE LINE
- = NATIONAL FOREST SYSTEM LANDS BOUNDARY LINE POSTED TO STANDARD.
- N.F.S.L. = NATIONAL FOREST SYSTEM LANDS
- PRIVATE = PRIVATE OWNERSHIP
- BLM = BUREAU OF LAND MANAGEMENT LANDS, NOT A PART OF THIS SURVEY.

HISTORY

The westerly boundary of Township 11 South, Range 38 East was surveyed by U.S. Deputy Surveyor Eugene P. McCormack, under contract No. 398. The survey commenced August 15, 1881 and final oaths were taken on October 15 of the same year. The township was subdivided by U.S. Deputy Surveyor Herman D. Gradon under contract No. 416, commencing on October 15, 1881 and completed October, 24 of the same year. Under the same contract while surveying Township 11 South, Range 37 East, in November of 1881 Gradon locates and refers to corners along the Township Line common the Townships 37 and 38.

The boundaries of Township 10 South, Range 38 East were also surveyed by U.S. Deputy Surveyor Eugene P. McCormack, under aforesaid contract No. 398. The township was subdivided by U.S. Deputy Surveyor Herman D. Gradon under contract No. 408, between June 8th and 19th, 1882. The final oaths were taken July 10, 1892.

Under U.S. Survey/Group 350 BLM Cadastral Surveyors Owen C. Chatters II, Peter A. Peterson and James J. Carlson remonumented many of the corners found on this project during a period which spanned four years, beginning in September 1971 and ending in August 1975

There is evidence (certified record of land corner monumentation) that Harry C. Hilderbrand, Oregon RLS 1898, monumented corners in Sections 31 and 32, T.10 S., R.38 E. in 1982 and 1983.

NOTES

The basis of bearing for this survey is a series of solar observations taken throughout the project and entered into a rigorous least squares adjustment. The hour angle method was utilized. Magnetic declination is 18 1/2 degrees as shown on U.S.G.S. Phillips Lake quadrangle.

This plat represents a record of a dependent resurvey of Sections 5, 6 and 7, T.11 S., R.38 E. with the subsequent partial subdivision of each section, the purpose being to determine and mark the boundary lines between private ownership and National Forest System Lands. The survey was executed under Wallowa-Whitman N.F. Contract No. 53-06M3-6-0025A, Task Order No. 1.

A Nikon A-5 Top Gun Total Station connected to a Tripod Data Systems 500T data collector was utilized to complete this survey. Trimble 4800LS GPS units were utilized to complete the geodetic tie. Computations were undertaken utilizing Star-Net Least Squares adjustment and Traverse PC coordinate geometry software.

The procedures used in this survey were in accordance with the contract specifications, the Manual of INSTRUCTIONS FOR THE SURVEY OF THE PUBLIC LANDS OF THE UNITED STATES 1973 and Oregon State law. Lost or obliterated corners where reestablished in accordance with the above referenced manual. A complete description of the corners found, set or reestablished can be found on Corner Record Forms filed with the Baker County Surveyor. This plat represents field surveys shown in field books and on raw data sheets which are made a part hereof.

SURVEYOR'S CERTIFICATE

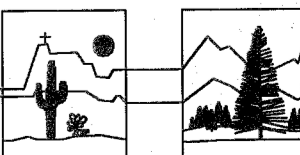
This plat correctly represents a survey made by me or under my direction in conformance with the statutes of Oregon and at the request of the USDA Forest Service during the fall of 1996 and spring, summer and fall of 1997.

R. David Schurian, PLS
Oregon Registration No. 1060
SHEET 1 OF 2

REGISTERED
PROFESSIONAL
LAND SURVEYOR
R. David Schurian 5/14/98
OREGON
JUNE 18, 1974
R. DAVID SCHURIAN
1060

RECORD OF SURVEY
SECTIONS 5, 6 & 7, T.11 S., R.38 E.,
WILLAMETTE MERIDIAN,
BAKER COUNTY, OREGON

Western
OUTBACK INCORPORATED
LAND & MINERAL SURVEYORS
1440 W. RANCHO FELIZ PL., TUCSON AZ., 85737-2264
PHONE & FAX (602) 844-4333



EXAMINED AND ACCEPTED FOR THE U.S. FOREST SERVICE

THIS 22 DAY OF MAY 1998

Roger Green COR

I CERTIFY THAT THIS SURVEY WAS PERFORMED AT THE REQUEST OF THE WALLOWA-WHITMAN NATIONAL FOREST SUPERVISOR

William K. Smith 5/22/98
SIGNATURE DATE

FILED May 26, 1998

BAKER COUNTY SURVEYOR

SURVEY NO. 11-38-103