

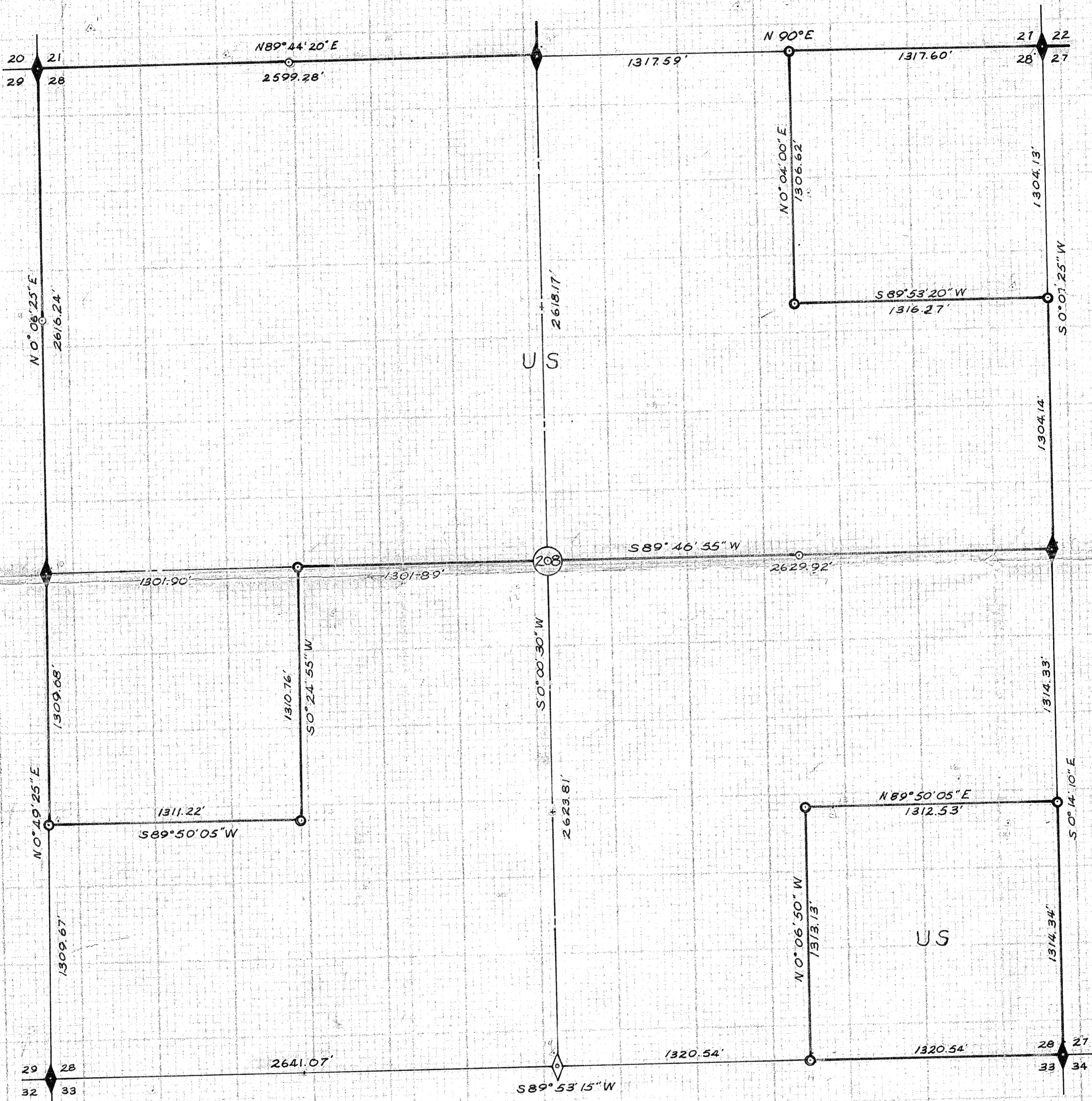
PLANIMETRIC MAP

Section 28, Township 11 South, Range 38 East, W.M.

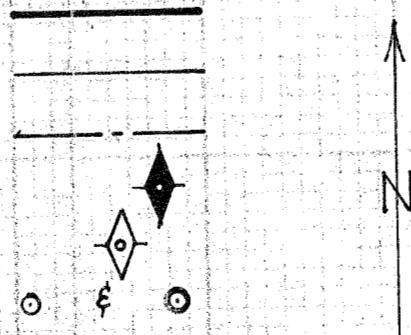
Surveyed & Platted by L. Myers

July, 1971

Scale 1" = 400'



Forest Boundary
 Section Line
 Center Section Line
 Found Corners
 Reestablished Corner
 Established Corners



I hereby certify that this plat is correct to the best of my knowledge. The control for this survey was done with Tellurometers. Basis for bearings was a solar observation. A theodolite and chain were used to tie existing corners to the control and establish other necessary corners from the control.

REGISTERED
OREGON
 LAND SURVEYOR
Leland Lee Myers
 JULY 9, 1965
LELAND LEE MYERS
 699

FILED Aug. 31, 1971
 BAKER COUNTY SURVEYOR
 SURVEY NO. 11-38-22

11 38 28 671