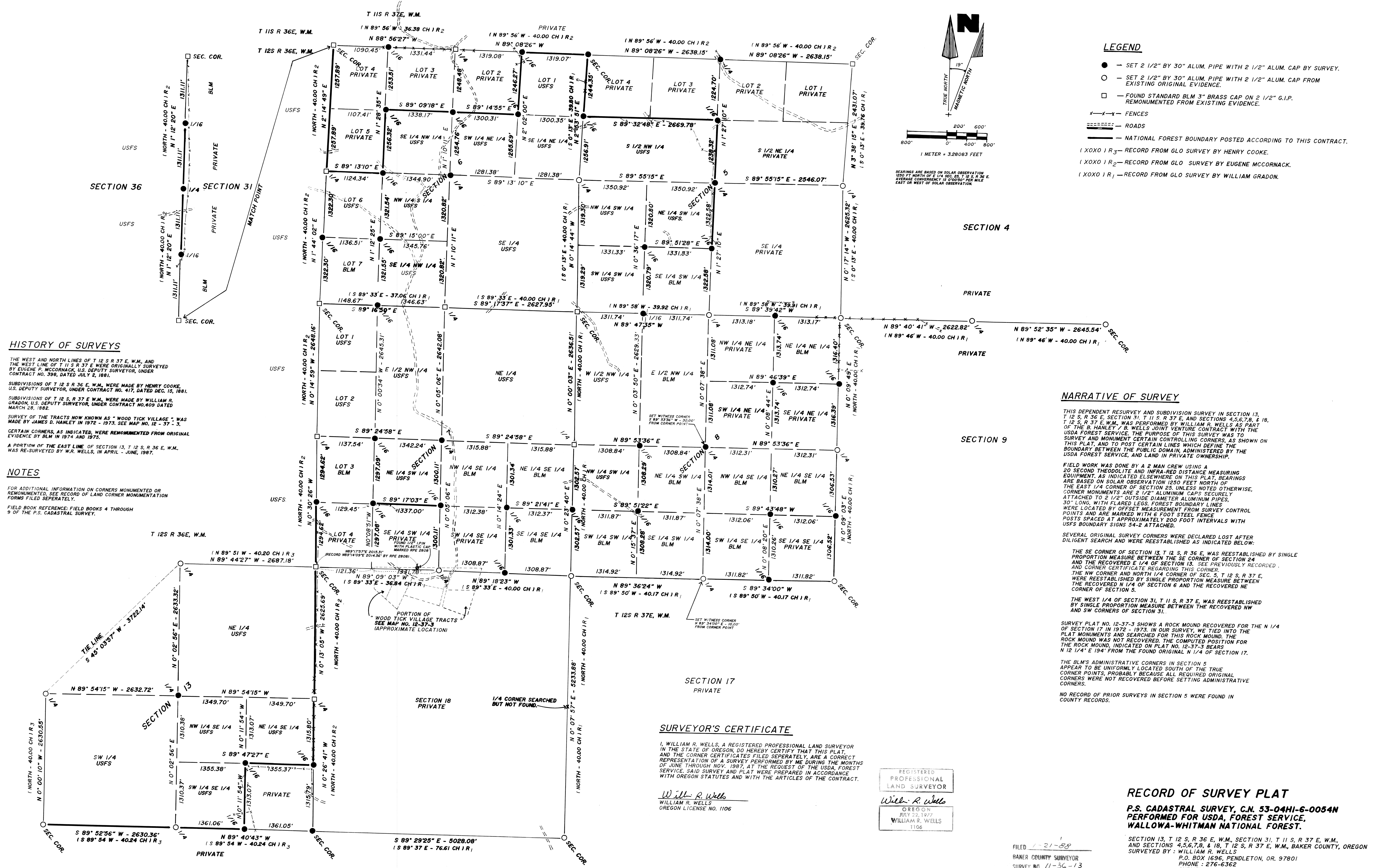


- LEGEND**
- — SET 2 1/2" BY 30" ALUM. PIPE WITH 2 1/2" ALUM. CAP BY SURVEY.
 - — SET 2 1/2" BY 30" ALUM. PIPE WITH 2 1/2" ALUM. CAP FROM EXISTING ORIGINAL EVIDENCE.
 - — FOUND STANDARD BLM 3" BRASS CAP ON 2 1/2" G.I.P. REMONUMENTED FROM EXISTING EVIDENCE.
 - — — — — FENCES
 - ==== ROADS
 - NATIONAL FOREST BOUNDARY POSTED ACCORDING TO THIS CONTRACT.
 - (XOXO) R₃ — RECORD FROM GLO SURVEY BY HENRY COOKE.
 - (XOXO) R₂ — RECORD FROM GLO SURVEY BY EUGENE MCCORNACK.
 - (XOXO) R₁ — RECORD FROM GLO SURVEY BY WILLIAM GRADON.



HISTORY OF SURVEYS

THE WEST AND NORTH LINES OF T 12 S R 37 E, W.M. AND THE WEST LINE OF T 12 S R 37 E WERE ORIGINALLY SURVEYED BY EUGENE P. MCCORNACK, U.S. DEPUTY SURVEYOR, UNDER CONTRACT NO. 398, DATED JULY 2, 1881.

SUBDIVISIONS OF T 12 S R 36 E, W.M. WERE MADE BY HENRY COOKE, U.S. DEPUTY SURVEYOR, UNDER CONTRACT NO. 417, DATED DEC. 15, 1881.

SUBDIVISIONS OF T 12 S R 37 E W.M. WERE MADE BY WILLIAM R. GRADON, U.S. DEPUTY SURVEYOR, UNDER CONTRACT NO. 409, DATED MARCH 28, 1882.

SURVEY OF THE TRACTS NOW KNOWN AS "WOOD TICK VILLAGE", WAS MADE BY JAMES D. HANLEY IN 1972 - 1973. SEE MAP NO. 12 - 37 - 3.

CERTAIN CORNERS, AS INDICATED, WERE REMONUMENTED FROM ORIGINAL EVIDENCE BY BLM IN 1974 AND 1975.

A PORTION OF THE EAST LINE OF SECTION 13, T 12 S, R 36 E, W.M. WAS RE-SURVEYED BY W.R. WELLS, IN APRIL - JUNE, 1987.

NOTES

FOR ADDITIONAL INFORMATION ON CORNERS MONUMENTED OR REMONUMENTED, SEE RECORD OF LAND CORNER MONUMENTATION FORMS FILED SEPARATELY.

FIELD BOOK REFERENCE: FIELD BOOKS 4 THROUGH 9 OF THE P.S. CADASTRAL SURVEY.

NARRATIVE OF SURVEY

THIS DEPENDENT RESURVEY AND SUBDIVISION SURVEY IN SECTION 13, T 12 S, R 36 E, SECTION 31, T 12 S, R 37 E, AND SECTIONS 4, 5, 7, 8, & 18, T 12 S, R 37 E, W.M. WAS PERFORMED BY WILLIAM R. WELLS AS PART OF THE B. HANLEY / B. WELLS JOINT VENTURE CONTRACT WITH THE USDA FOREST SERVICE. THE PURPOSE OF THIS SURVEY WAS TO SURVEY AND MONUMENT CERTAIN CONTROLLING CORNERS, AS SHOWN ON THIS PLAT, AND TO POST CERTAIN LINES WHICH DEFINE THE BOUNDARY BETWEEN THE PUBLIC DOMAIN, ADMINISTERED BY THE USDA FOREST SERVICE, AND LAND IN PRIVATE OWNERSHIP.

FIELD WORK WAS DONE BY A 2 MAN CREW USING A 20 SECOND THEODOLITE AND INFRARED DISTANCE MEASURING EQUIPMENT. AS INDICATED ELSEWHERE ON THIS PLAT, BEARINGS ARE BASED ON SOLAR OBSERVATION 1250 FEET NORTH OF THE EAST 1/4 CORNER OF SECTION 23, UNLESS NOTED OTHERWISE. CORNER MONUMENTS ARE 2 1/2" ALUMINUM CAPS SECURELY ATTACHED TO 2 1/2" OUTSIDE DIAMETER ALUMINUM PIPES, 30" LONG, WITH FLARED LEGS. FOREST BOUNDARY LINES WERE LOCATED BY OFFSET MEASUREMENT FROM SURVEY CONTROL POINTS AND ARE MARKED WITH 6 FOOT STEEL FENCE POSTS SPACED AT APPROXIMATELY 200 FOOT INTERVALS WITH USFS BOUNDARY SIGNS 54-2 ATTACHED.

SEVERAL ORIGINAL SURVEY CORNERS WERE DECLARED LOST AFTER DILIGENT SEARCH AND WERE REESTABLISHED AS INDICATED BELOW:

THE SE CORNER OF SECTION 13, T 12 S, R 36 E, WAS REESTABLISHED BY SINGLE PROPORTION MEASURE BETWEEN THE SE CORNER OF SECTION 24 AND THE RECOVERED E 1/4 OF SECTION 13. SEE PREVIOUSLY RECORDED AND CORNER CERTIFICATE REGARDING THIS CORNER.

THE NW CORNER AND NORTH 1/4 CORNER OF SEC. 5, T 12 S, R 37 E, WERE REESTABLISHED BY SINGLE PROPORTION MEASURE BETWEEN THE RECOVERED W 1/4 OF SECTION 6 AND THE RECOVERED NE CORNER OF SECTION 5.

THE WEST 1/4 OF SECTION 31, T 12 S, R 37 E, WAS REESTABLISHED BY SINGLE PROPORTION MEASURE BETWEEN THE RECOVERED NW AND SW CORNERS OF SECTION 31.

SECTION PLAT NO. 12-37-3 SHOWS A ROCK MOUND RECOVERED FOR THE N 1/4 OF SECTION 17 IN 1972 - 1973. IN OUR SURVEY, WE TIED INTO THE PLAT MONUMENTS AND SEARCHED FOR THIS ROCK MOUND. THE ROCK MOUND WAS NOT RECOVERED. THE COMPUTED POSITION FOR THE ROCK MOUND, INDICATED ON PLAT NO. 12-37-3 BEARS N 12 1/4° E 194' FROM THE FOUND ORIGINAL N 1/4 OF SECTION 17.

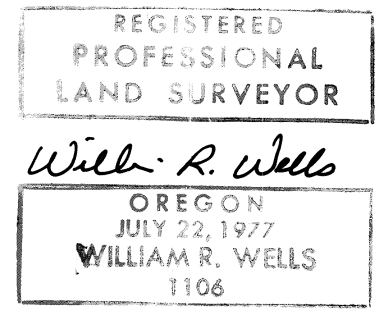
THE BLM'S ADMINISTRATIVE CORNERS IN SECTION 5 APPEAR TO BE UNIFORMLY LOCATED SOUTH OF THE TRUE CORNER POINTS, PROBABLY BECAUSE ALL REQUIRED ORIGINAL CORNERS WERE NOT RECOVERED BEFORE SETTING ADMINISTRATIVE CORNERS.

NO RECORD OF PRIOR SURVEYS IN SECTION 5 WERE FOUND IN COUNTY RECORDS.

SURVEYOR'S CERTIFICATE

I, WILLIAM R. WELLS, A REGISTERED PROFESSIONAL LAND SURVEYOR IN THE STATE OF OREGON, DO HEREBY CERTIFY THAT THIS PLAT, AND THE CORNER CERTIFICATES FILED SEPARATELY, ARE A CORRECT REPRESENTATION OF A SURVEY PERFORMED BY ME DURING THE MONTHS OF JUNE THROUGH NOV. 1987, AT THE REQUEST OF THE USDA, FOREST SERVICE, SAID SURVEY AND PLAT WERE PREPARED IN ACCORDANCE WITH OREGON STATUTES AND WITH THE ARTICLES OF THE CONTRACT.

William R. Wells
WILLIAM R. WELLS
OREGON LICENSE NO. 1106



RECORD OF SURVEY PLAT

P.S. CADASTRAL SURVEY, C.N. 53-04HI-6-0054N
PERFORMED FOR USDA, FOREST SERVICE,
WALLOWA-WHITMAN NATIONAL FOREST.

SECTION 13, T 12 S, R 36 E, W.M., SECTION 31, T 12 S, R 37 E, W.M., AND SECTIONS 4, 5, 6, 7, 8, & 18, T 12 S, R 37 E, W.M., BAKER COUNTY, OREGON
SURVEYED BY: WILLIAM R. WELLS
P.O. BOX 1696, PENDLETON, OR. 97801
PHONE: 276-6362
SURVEYED JUNE - NOVEMBER, 1987.
DATE: DECEMBER 15, 1987.

FILED 12-21-88
BAKER COUNTY SURVEYOR
SURVEY NO. 11-36-13
12-36-58
12-37-64
12-37-19