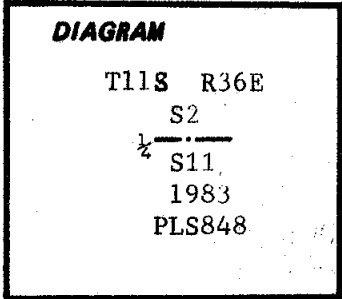


CERTIFIED RECORD OF LAND CORNER MONUMENTATION

History of original corner establishment:

Corner established in 1882 by William R. Gradon, Under General Land Office Contract No. 409. Surveyor Generals Notes state: Set a basalt stone 12x12x10 ins. 8" in the ground for 1/2 section corner marked 1/2 on N face, From which:
A Tamarack 20" dia. bears North 17 lks dist., marked 1/2 S BT.
A " 14" dia. bears S40°W, 21 lks dist., marked 1/2 S BT.



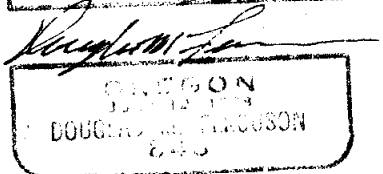
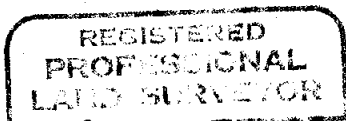
Description of corner evidence found:

Found a 12x12x7" stone, set in the ground, no marks apparently visible.
From which:
A Tamarack 30" dia. with scribing visible & chaining notch, bears restored North 11.2 ft. to notch. A Tamarack 22" dia. with scribing visible & chaining notch bears record S40°W, 13.9 ft. to notch. Accepted stone as 1/2 corner position.

Description of monument and accessories established to perpetuate the original location of this corner:

Set a 30"x2 1/2" aluminum pipe with a 2 1/2" aluminum cap stamped as shown in diagram. Set 28" in the ground and set original stone North alongside pipe.
From which:
A Tamarack 8" dia. bears N36°E, 46.8 ft. scribed 1/2 S2 BT.
A Fir 7" dia. bears S3°E, 36.5 ft. scribed 1/2 S11 BT.
Set a steel post with warning sign North 2.5 ft.
Nailed brass washers stamped PLS848, bearing trees and warning signs to each tree.
Painted 6" red band around each tree.

Corner monumented 9-1-83
Witnessed by Dan Martin



Office of..... County of.....
State of....., I hereby certify that the within instrument was filed in this office for record on the..... day of....., 19.....

..... by
(COUNTY OFFICIAL) (DEPUTY)