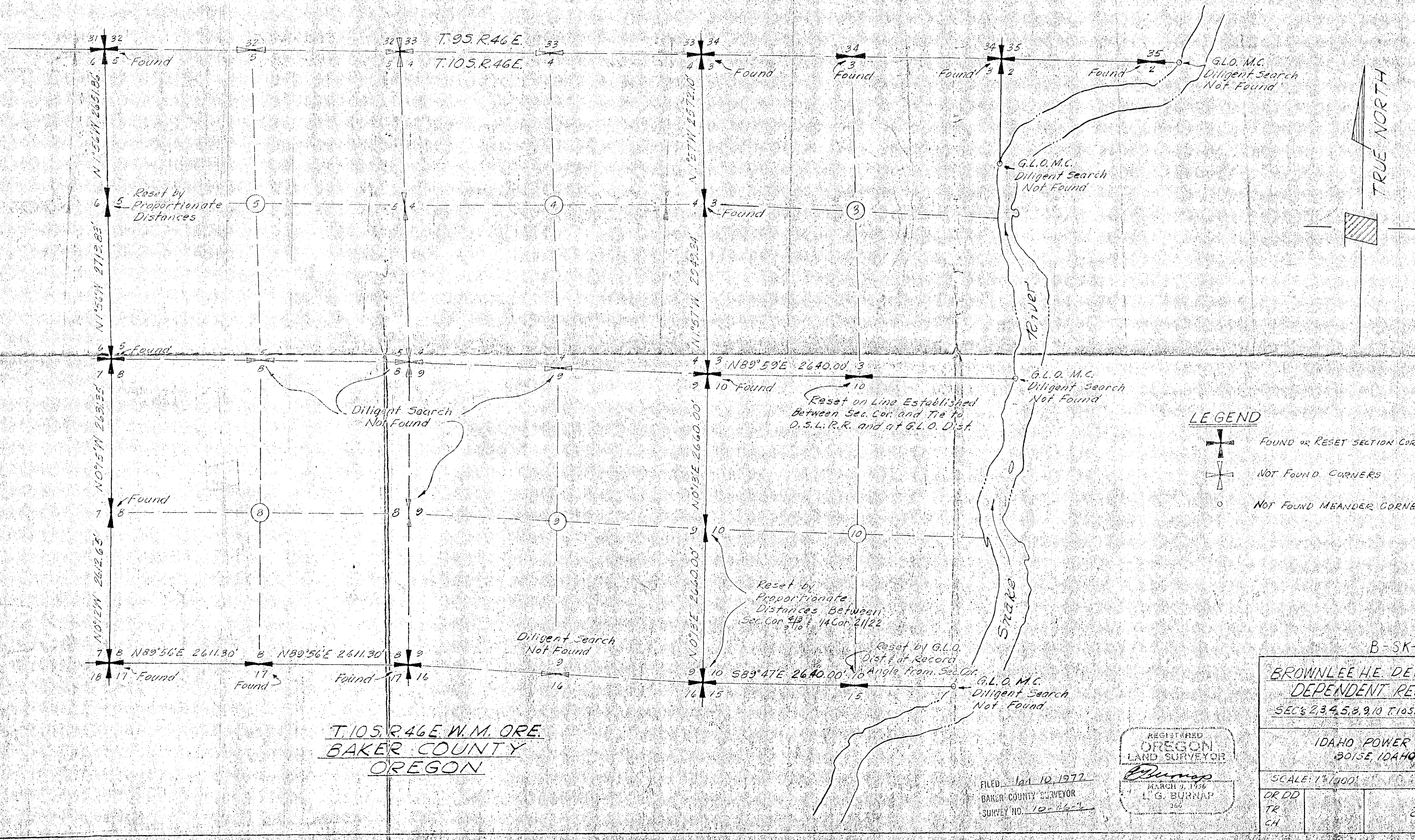


T.9S. R.46E. W.M. ORE.
BAKER COUNTY
OREGON



LEGEND

- FOUND OR RESET SECTION CORNERS
- NOT FOUND CORNERS
- NOT FOUND MEANDER CORNERS

B-SK-30

BROWNLEE HE DEVELOPMENT
DEPENDENT RESURVEY OF
SECS 2,3,4,5,8,9,10 T.10S. R.46E. W.M. ORE.

IDAHO POWER CO.
BOISE, IDAHO

SCALE: 1"=100' OCT. 3, 1957

OR DD	201R-16712
TR	
CH	

REGISTERED
OREGON
LAND SURVEYOR

L. G. Burnap
MARCH 9, 1956
L. G. BURNAP
366

FILED Jan 10, 1972
BAKER COUNTY SURVEYOR
SURVEY NO. 10-16-72

R-216