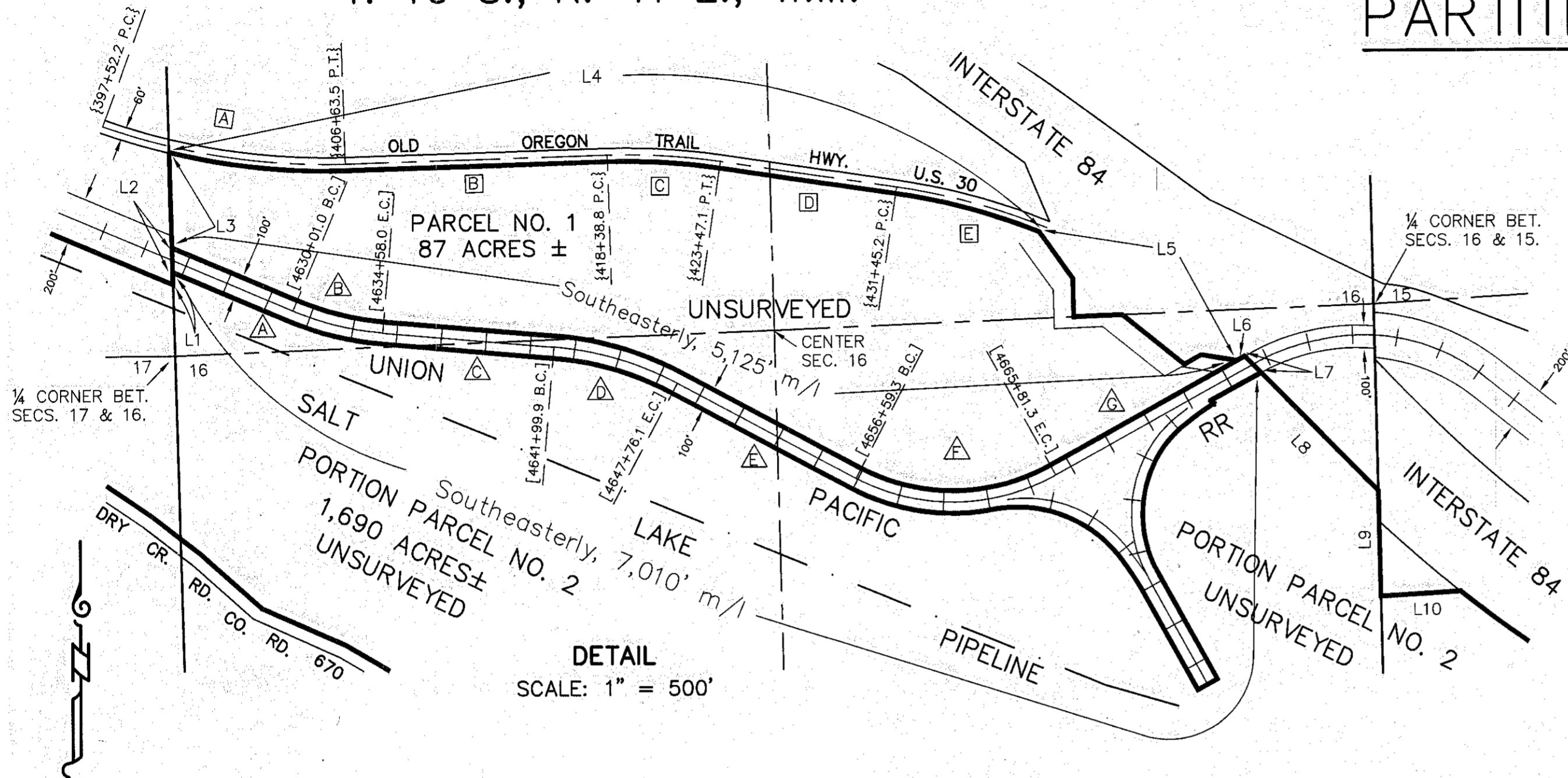


T. 10 S., R. 41 E., W.M.

PARTITION PLAT NO. P2000-001



EXTERIOR PROPERTY BOUNDARY DATA

- L1 North, 55' m/l
- L2 North, 110' m/l
- L3 North, 426' m/l
- L4 Southeasterly, 3930' m/l
- L5 Southeasterly, 1175' m/l
- L6 <Northeasterly, 40' m/l>
- L7 Southeasterly, 104' m/l
- L8 (S. 44° 39' 30" E.), 743' m/l
- L9 South, 470' m/l
- L10 East, 360' m/l

LEGEND

- Union Pacific Railroad tracks.
- < > Record data Ba. Co. Deed Book 170, Page 1276.
- () Record data O.S.H.D. Drawing No. 8B-9-5.
- { } Record data O.S.H.D. Drawing No. 3B-22-23.
- [] Record data Oregon-Washington Railroad & Navigation Company Drawing V-ORE-4/88.

DEED REFERENCES

- Baker County Leases & Agreements Book "S", Page 271
- Baker County Court, Final Judgment, Case No. L-2509
- Baker County Deed Book 64, Page 593
- Baker County Deed Book 78, Page 335
- Baker County Deed Book 99, Page 628
- Baker County Deed Book 108, Page 55
- Baker County Deed Book 131, Page 437
- Baker County Deed Book 131, Page 451
- Baker County Deed Book 132, Page 74
- Baker County Deed Book 132, Page 392
- Baker County Deed Book 141, Page 65
- Baker County Deed Book 147, Page 146
- Baker County Deed Book 152, Page 600
- Baker County Deed Book 153, Page 60
- Baker County Deed Book 153, Page 100
- Baker County Deed Book 153, Page 390
- Baker County Deed Book 153, Page 409
- Baker County Deed Book 155, Page 339
- Baker County Deed Book 157, Page 468
- Baker County Deed Book 164, Page 893
- Baker County Deed Book 164, Page 895
- Baker County Deed Book 164, Page 1062
- Baker County Deed Book 164, Page 1064
- Baker County Deed Book 165, Page 857
- Baker County Deed Book 168, Page 1482
- Baker County Deed Book 169, Page 928
- Baker County Deed Book 170, Page 1276
- Baker County Deed Book 171, Page 1273
- Baker County Deed No. 69 19 050
- Baker County Deed No. 79 06 076
- Baker County Deed No. 86 44 092
- Baker County Deed No. 89 51 003
- Baker County Deed No. 96 37 138
- Baker County Deed No. 98 36 182
- Baker County Deed No. 98 36 186
- Baker County Deed No. 99 26 319
- Baker County Deed No. 99 26 321
- Baker County Deed No. 99 32 193
- Baker County Deed No. 99 32 252
- Baker County Deed No. 99 40 027

REFERENCES

- Baker County Survey No. 29
- Baker County Survey No. 10-41-5
- Baker County Partition Plat No. P1993-005
- Baker County Partition Plat No. P1993-006
- U.P.R.R. Drawing V-ORE-4/88
- O.S.H.D. Drawing No. 8B-9-5
- O.S.H.D. Drawing No. 8B-9-6
- O.S.H.D. Drawing No. 3B-22-23
- Title report issued by ELKHORN TITLE CO. as File No. 00012060, dated August 23, 2000

CENTERLINE DATA U.S. HWY. NO. 30

- A {2' C.L.} Δ= {18' 10'} T= {458.1'}
- B {S. 89° 38' E., 1175.3'}
- C {3' C.R.} Δ= {10' 10'} T= {254.9'}
- D {S. 79° 28' E., 798.1'}
- E {2' C.R.} Δ= {16' 11'} T= {407.3'}

CENTERLINE DATA UNION PACIFIC RR

- △ 430' M/L
- △ [4' 12' C.L.] Δ= [19' 12']
- △ [741.9']
- △ [4' 04' C.R.] Δ= [23' 26']
- △ [883.2']
- △ [6' 06' C.L.] Δ= [56' 51']
- △ [1027.9']

DETAIL SCALE: 1" = 500'

I, Thomas J. Hanley, hereby certify that this is an exact duplicate copy of the partition plat as submitted to the Baker County Clerk for recording.

Thomas J. Hanley
Thomas J. Hanley

DITCH EASEMENT

Easement is conveyed to those with a legal water right for irrigation beyond the boundary of said parcel fed by any existing improved ditch or pipeline. To those persons, is granted a perpetual, non-exclusive easement for it and its laterals, feeders and sub-ditches, headgates and other appurtenances to operate, use, maintain, restore and repair, with heavy equipment when needed, the existing ditch in the same manner as same presently exists upon, over and across the property as shown on the annexed minor partition plat. The total width shall equal the bank to bank ditch width, plus 15 feet beyond the bank on each side of the ditch. Reasonable access to the easement will be granted at location designated by the property owner, unless other reasonable access is available.

HANLEY ENGINEERING

P.O. Box 701, 2043 Main St. Baker City, Oregon 97814 (541) 523-3803

REGISTERED PROFESSIONAL LAND SURVEYOR

Thomas J. Hanley
OREGON
JULY 13, 1979
THOMAS J. HANLEY
1817

NOVEMBER, 2000

Renews June 30, 2001

FILED FEB. 21, 2001
BAKER COUNTY SURVEYOR
SURVEY NO. 10-41-8 MP

SHEET 2 OF 3