

WEST 1/4 COR. SEC. 19, NOT FND.

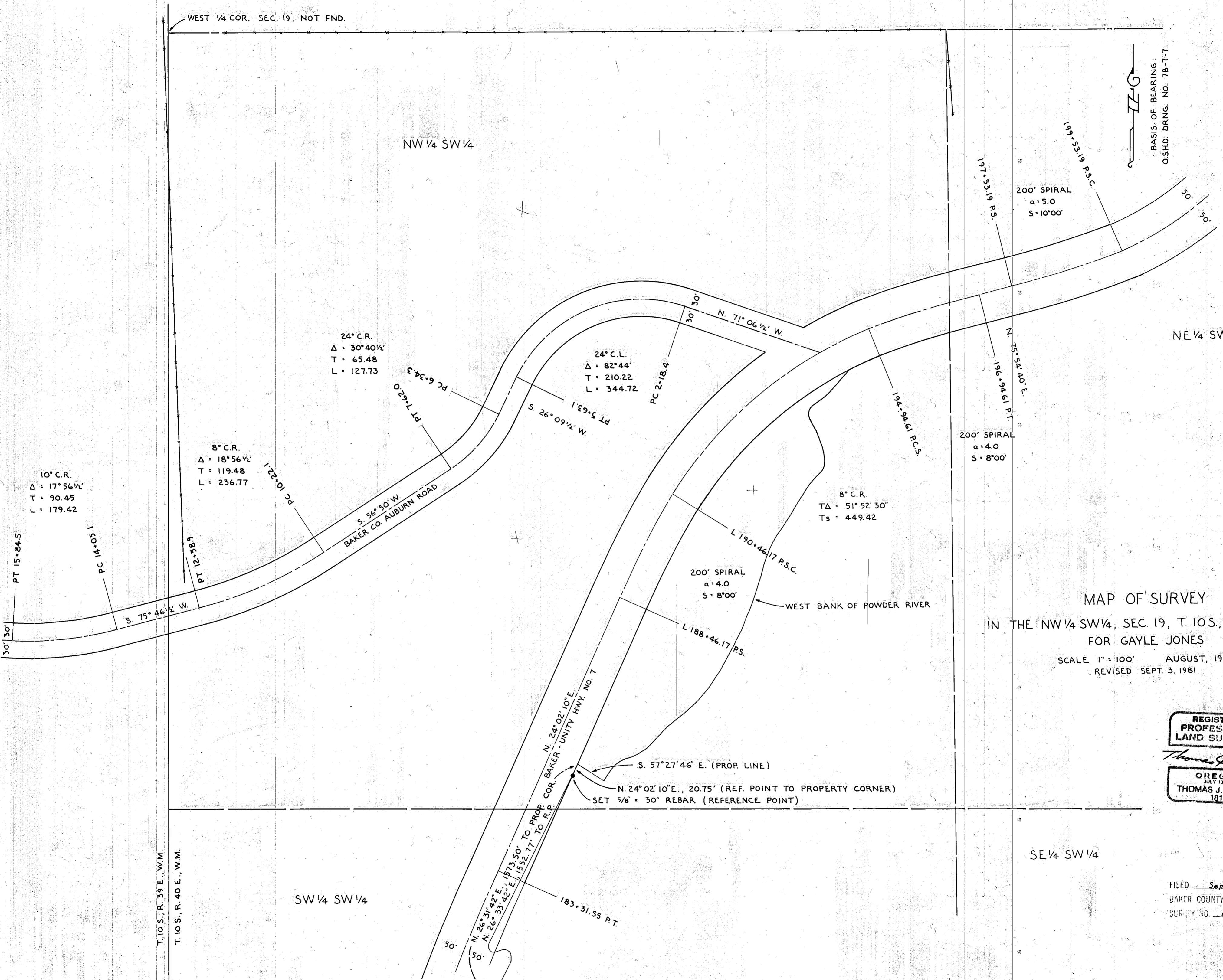
NW 1/4 SW 1/4

NE 1/4 SW 1/4

SW 1/4 SW 1/4

SE 1/4 SW 1/4

T. 10 S., R. 39 E., W.M.
T. 10 S., R. 40 E., W.M.



MAP OF SURVEY
 IN THE NW 1/4 SW 1/4, SEC. 19, T. 10S., R. 40E., W.M.
 FOR GAYLE JONES
 SCALE 1" = 100' AUGUST, 1981
 REVISED SEPT. 3, 1981

REGISTERED
 PROFESSIONAL
 LAND SURVEYOR

Thomas J. Hanley
 OREGON
 JULY 13, 1979
 THOMAS J. HANLEY
 1817

FILED Sept. 3, 1981
 BAKER COUNTY SURVEYOR
 SURVEY NO. 10-40-15

FND., BRASS CAP MON.

24	19
25	30