

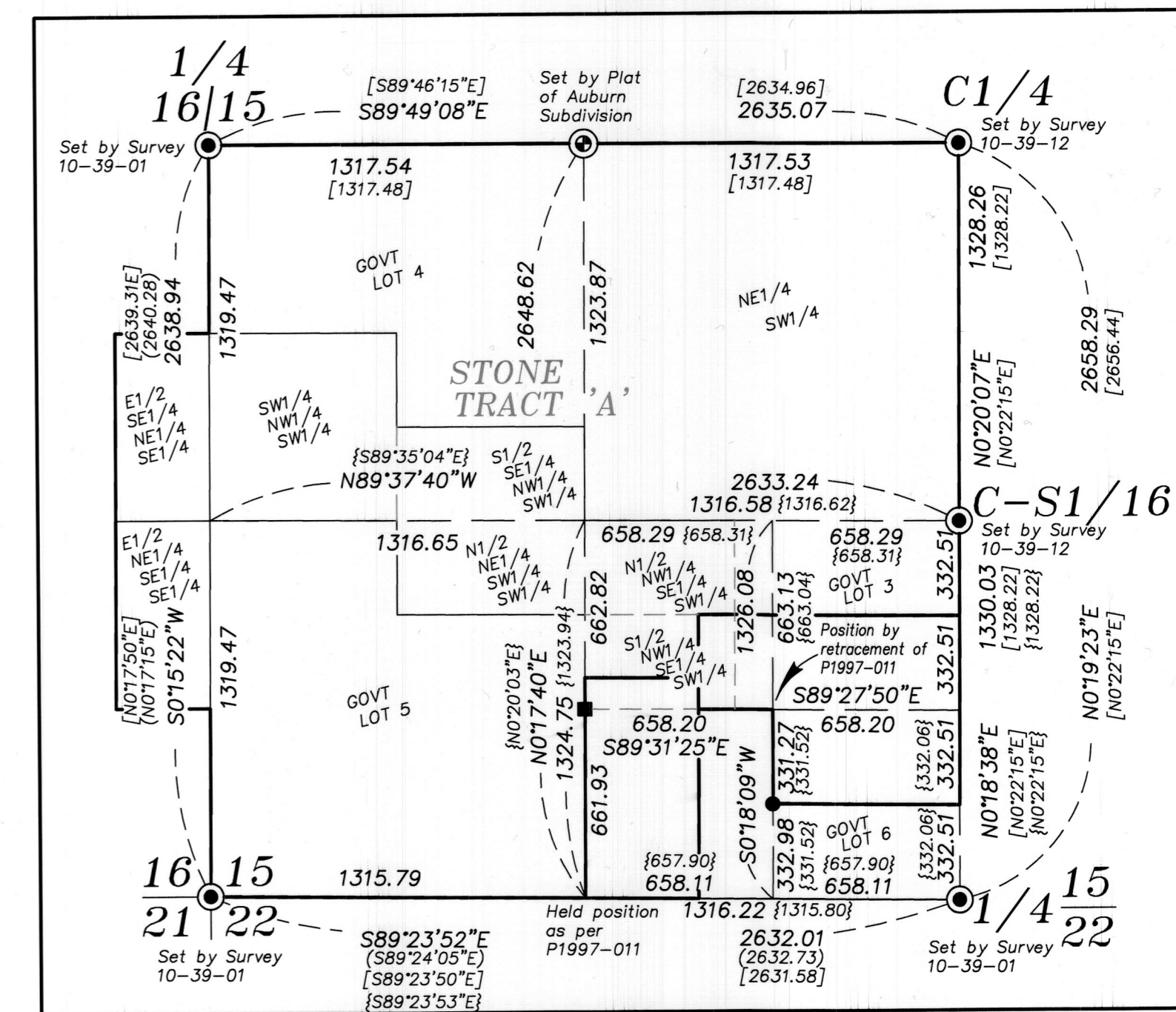
LOT LINE ADJUSTMENT BASIS OF BEARING

Oregon Coordinate Reference System Baker Zone
as defined in OAR 734-005-015 NAD-83(2011)

SCALE: 1"=100'

LEGEND

- Found 2 1/2" aluminum cap on 1 1/2" aluminum pipe
- ⊙ Found 2 1/2" brass cap on 1 1/2" iron pipe, set by Plat of Auburn Subdivision
- Found 5/8" iron pin with yellow plastic cap marked HANLEY ENGR. PLS 1206, set by Survey Number 10-39-13
- Found 5/8" iron pin with yellow plastic cap marked HANLEY ENGR. PLS 1206, set by Partition Plat P1997-011 (10-39-164MP)
- Set 5/8"x30" iron pin with yellow plastic cap marked BGB SURVEY MARKER
- Centerline
- () Record measurement as per Survey Number 10-39-01
- [] Record measurement as per Survey Number 10-39-12
- { } Record measurement as per Survey Number 10-39-13
- ~ ~ Record measurement as per Survey Number 10-39-164MP (P1997-011)



SUBDIVISION OF SW1/4 SEC 15
SCALE 1"=500'

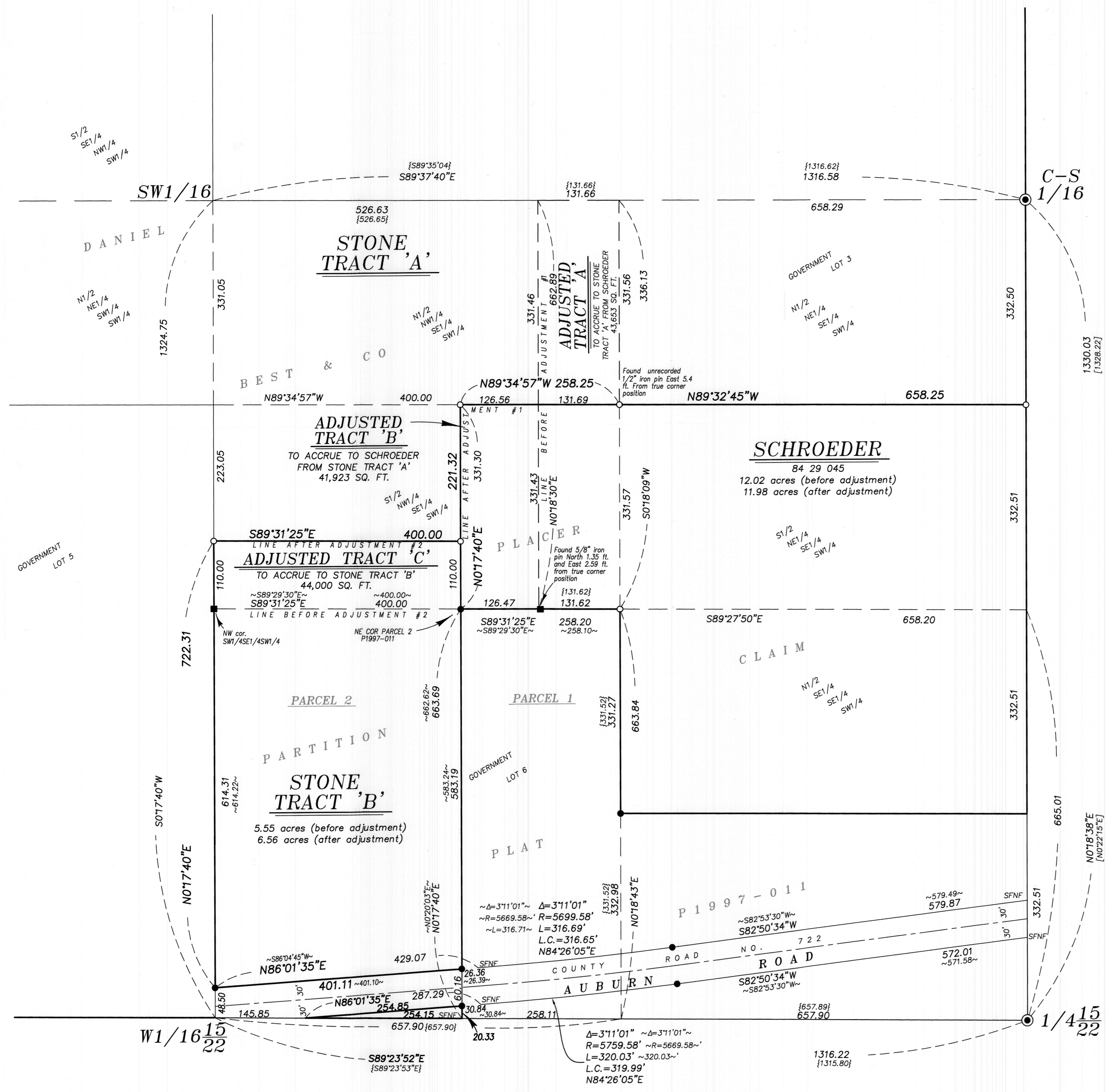
NARRATIVE

This survey was done at the request of Phil Stone, one of the parties of this lot line adjustment. Mr. Stone wanted to adjust the property lines as per Baker County Planning Approval 23-236 and 23-237. I recover monuments as shown. Monuments pertaining to the subdivision of the SW1/4 of this Section were set in Surveys 10-39-012, 10-39-013 and well as in P1997-011. Despite not fitting a perfect section break, I hold the position of monumentation found by these surveys, as these are undisturbed monuments of long standing use. I hold the Center-South 1/16th corner, as monumented, and establish the East/West centerline of the SW1/4 by driving a line to the S1/16th on the West line of the Section, placed at midpoint between the Section corner and Quarter corner. I hold the monument at the Center-West 1/16th and drive a line through the monuments set by 10-39-13 and P1997-011 to establish the North/South centerline of the SW1/4 of this section. The North/South line of the SE1/4 of the SW1/4 of this section, I place as per BLM Manual of Instructions Along the East/West centerline, however, I hold the NW cor. of the SW1/4SE1/4SW1/4, as monumented by Survey 10-39-013 and drive a line through the pin set 400 feet East, set by P1997-011, to place the North line of the SW1/4SE1/4SW1/4 of the Section. I run this line to intersect said North/South line of the SE1/4SW1/4. The pin set at the SW corner of the East 2 acres of the SW1/4 appears to be out of position, which is likely disturbed, as it falls in a horse corral. I hold the record position of this West line of said 2 acre portion, as placed by Survey 10-39-013, however, since this line is moot following this lot line adjustment, placement of this line is for acreage calculation only. I place the remaining 1/64 and 1/256th corners by BLM Manual of Instructions. Adjusted lines were placed at the direction of the landowners. I find no other unusual conditions with this survey.

REFERENCE MATERIAL

Survey Number 10-39-01
Survey Number 10-39-09
Survey Number 10-39-12
Survey Number 10-39-13
Survey Number 10-39-164MP
Partition Plat P1997-011
Plat of Auburn Subdivision

DEED REFERENCES
84 29 045
802 20 0224
809 12 0301



FILED May 1, 2024
BAKER COUNTY SURVEYOR
SURVEY NO. 10-39-190

REGISTERED PROFESSIONAL LAND SURVEYOR
JEFFREY S. HSU
83571
RENEWAL DATE: JUNE 30, 2025

BAGETT, GRIFFITH & BLACKMAN 2006 Adams Avenue, LaGrande, Oregon Map of Survey	
LOT LINE ADJUSTMENT Situated in the Southwest quarter of Section 15, Township 10 South, Range 39 East of the Willamette Meridian BAKER COUNTY, OREGON	
SURVEYED FOR	Phil Stone
SURVEYED BY	J. S. H.
Scale: 1" = 200'	Drawn by: J. S. H. Mar-Apr 2024