

SEC. 36, T. 10 S., R. 39 E., W.M. and SEC. 30, 31, T. 10 S., R. 40 E., W.M.
BAKER COUNTY, OREGON

NARRATIVE

HISTORY - SECTION 30, T. 10 S., R. 40 E.
THE EXTERIOR LINES OF T. 10 S., R. 40 E., W.M. WERE ORIGINALLY SURVEYED BY TIMOTHY W. DAVENPORT UNDER GENERAL LAND OFFICE CONTRACT NO. 102, DATED JULY 20, 1863. THE INTERIOR SUBDIVISION OF T. 10 S., R. 40 E., W.M. WAS SURVEYED BY DAVID P. THOMPSON AND DANIEL CHAPLIN UNDER GENERAL LAND OFFICE CONTRACT NO. 104 DATED APRIL 16, 1864. A COMPLETION SURVEY OF THE SUBDIVISION LINES WAS PERFORMED BY CHARLES M. FOSTER UNDER SPECIAL CONTRACT DATED FEBRUARY 16, 1889.

SUBSEQUENT RETRACEMENT, REMONUMENTATION, AND SUBDIVISION OF SECTION 30 WAS COMPLETED THROUGH A SERIES OF SURVEYS BY IRA HOFFMAN IN HIS OFFICIAL CAPACITY AS BAKER COUNTY SURVEYOR IN 1915.

SECTION 30 EXTERIOR RETRACEMENT
THE RETRACEMENT OF SECTION 30 STARTED BY ESTABLISHING: 1) A CONTROL NETWORK UTILIZING AN OPUS SOLUTION, 2) STATE PLANE COORDINATES, AND 3) CONVERTING STATE PLANE COORDINATES TO A LOCAL DATUM PLANE (LDP), UTILIZING REAL-TIME KINETIC (RTK) GPS METHODS. WE TIED THE FOUND BAKER COUNTY BRASS CAP AT THE NORTHWEST CORNER OF SECTION 30, THEN WORKED OUR WAY CLOCKWISE AROUND THE SECTION. WE SUBSEQUENTLY FOUND THE NORTH QUARTER, THE NORTHEAST CORNER AND THE EAST QUARTER CORNER. ALL REMONUMENTED BY IRA HOFFMAN, BAKER COUNTY SURVEYOR, IN 1915. WE THEN FOUND THE ORIGINAL GLO CORNER FOR THE SOUTHWEST CORNER, COULD NOT FIND THE SOUTH QUARTER CORNER (LOST), AND FOUND THE SOUTHWEST CORNER AS REFERENCED BY LELAND MYERS, PLS 699, ON HIS UNRECORDED MAP OF SURVEY FROM 2005. WE FOUND THE MYERS SECTION CORNER FITS THE CALLS SHOWN ON THE SUMPTER VALLEY RAILROAD MAPS WELL AND HELD IT FOR THE CORNER, CLOSING OUT THE SECTION. WE THEN FOUND THE WEST QUARTER CORNER REMONUMENTED BY IRA HOFFMAN IN 1915.

SECTION 30 INTERIOR RETRACEMENT
PART OF THE PURPOSE OF OUR SURVEY WAS TO RETRACE AND SUBDIVIDE SECTION 30 IN ORDER TO ESTABLISH (AND IN THIS CASE RE-ESTABLISH) THE EAST-WEST CENTERLINE OF THE SOUTHWEST QUARTER OF THE RECENTLY-ACQUIRED ODOT PROPERTY IN THE SOUTHWEST QUARTER OF THE SOUTHWEST QUARTER. OUR RESEARCH REVEALED THAT IRA HOFFMAN HAD SUBDIVIDED SECTION 30 AND MONUMENTED ALL BUT THREE SIXTEENTH CORNERS (THE NE SIXTEENTH, THE C-S SIXTEENTH AND THE NORTH SIXTEENTH COMMON TO SECTIONS 25 AND 30) IN HIS CAPACITY AS BAKER COUNTY SURVEYOR. WE FOUND THE ORIGINAL MARKED STONES SET BY HOFFMAN FOR THE SOUTH SIXTEENTH COMMON TO SECTION 25 AND 30, THE SW SIXTEENTH AND THE CENTER QUARTER. IN MOST CASES, THE HOFFMAN CORNERS FIT RELATIVELY WELL TO THE THEORETICAL POSITIONS AND IT APPEARS FROM REVIEWING THE FIELDNOTES THAT HE ATTEMPTED TO UTILIZE THE PROPER METHODOLOGY. THEREFORE, I HAVE HELD THE FOUND HOFFMAN SW SIXTEENTH CORNER AND THE FOUND HOFFMAN SOUTH SIXTEENTH COMMON TO SECTIONS 25 AND 30 FOR THE WEST HALF OF THE EAST-WEST CENTERLINE OF THE SOUTHWEST QUARTER OF SECTION 30. WE HAVE SHOWN THE DIFFERENCES BETWEEN THE THEORETICAL AND MONUMENTED INTERIOR SECTION LINES.

EQUIPMENT USED
THE GPS PORTION OF THIS SURVEY WAS COMPLETED USING TWO LEICA SYSTEM SMARTSTATION DUAL FREQUENCY RECEIVERS, WITH ANTENNA MODEL AX 1202. THE TOTAL STATION USED WAS A LEICA 1200 WITH LEICA DATA COLLECTION SOFTWARE.

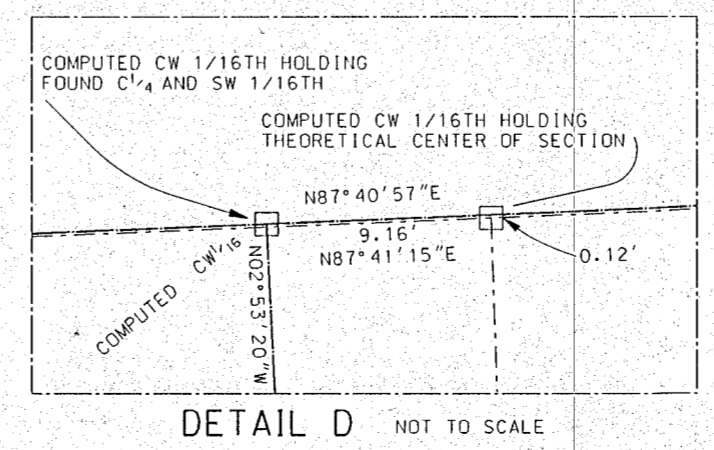
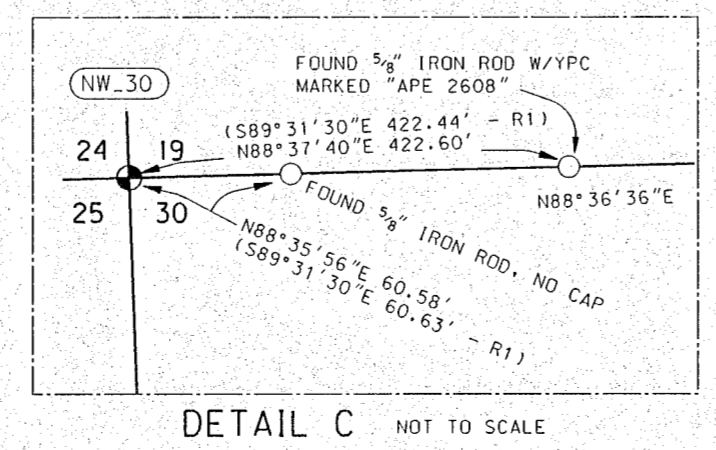
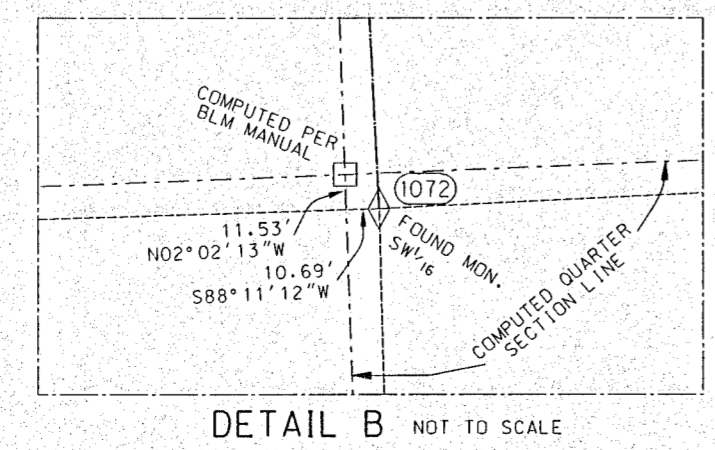
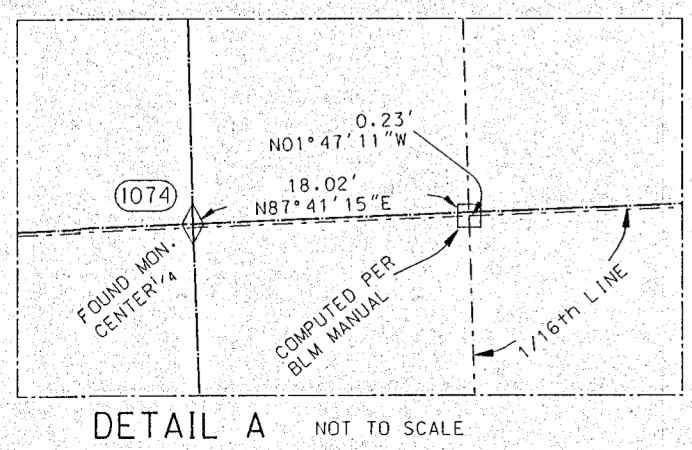
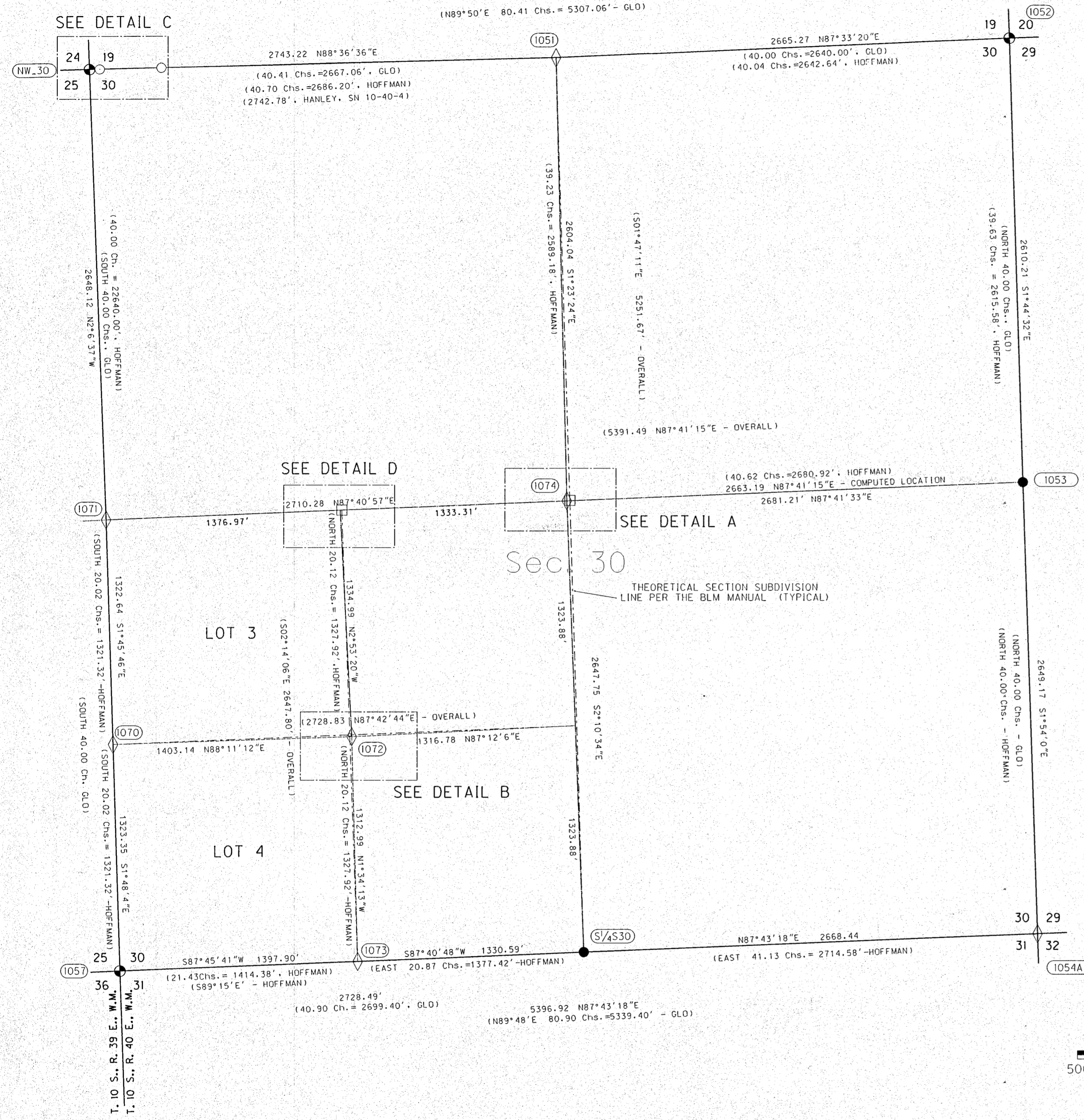
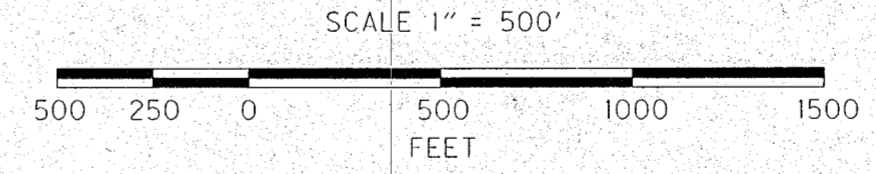
- REFERENCES**
- 1) BAKER CO. SURVEY NO. 10-40-4
 - 2) BAKER CO. SURVEY NO. 10-40-15
 - 3) BAKER CO. UNRECORDED SURVEY BY LELAND MYERS (2005)
 - 4) IRA HOFFMAN FIELDNOTES BOOK 24 (1914-1915)
 - 5) ORIGINAL GLO SURVEY NOTES FOR T. 10S., R. 40E. CONTRACT NOS. 102, 104 & SPECIAL INSTRUCTIONS

- OREGON STATE HIGHWAY DEPT. DRAWING NO. 2B-11-14
" " " " " NO. 5B-35-6
" " " " " NO. 7B-7-7
" " " " " NO. 11B-1-20
" " " " " NO. 1R-2-885

LEGEND

- () RECORD DATA AS NOTED
- (RI) RECORD DATA PER BAKER COUNTY SURVEY NUMBER 10-40-4
- FOUND MONUMENT AS NOTED
- SET MONUMENT AS NOTED
- ⊙ FOUND REMON. CORNER AS NOTED
- ◇ FOUND PLS CORNER AS NOTED
- COMPUTED POINT, NOTHING SET
- SECTION LINE
- QUARTER SECTION LINE
- SIXTEENTH SECTION LINE

REGISTERED PROFESSIONAL LAND SURVEYOR
Mark D. Filsinger
OREGON
JULY 20, 1993
MARK D. FILSINGER
2613
EXPIRES: 12/31/2013



OREGON DEPARTMENT OF TRANSPORTATION
RIGHT-OF-WAY BOUNDARY MONUMENTATION MAP
BUNDLE 457: RANCHERIA AND SALISBURY BRIDGES
WHITNEY HIGHWAY NO. 71
OR 7, M.P. 41.2 AND M.P. 42.3
BAKER COUNTY

ODOT REGION 5
3012 ISLAND AVENUE
LA GRANDE, OR 97850
KEY NO. 14227

MAY 3, 2012
SCALE: 1" = 500'
SHEET 2 OF 5

FILED *Sept. 27, 2012*
BAKER COUNTY SURVEYOR
SURVEY NO. *10-39-177/10-40-36*