



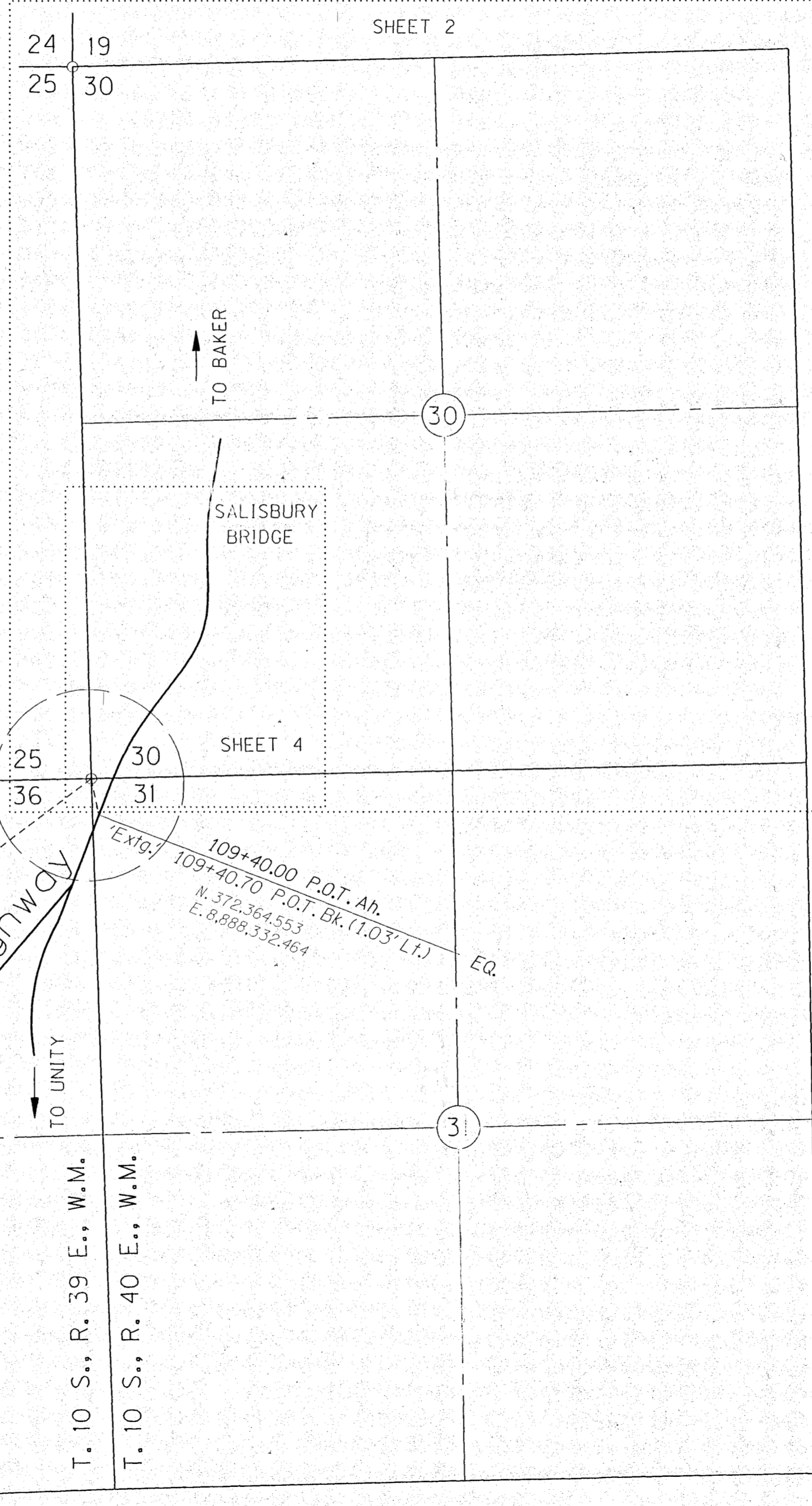
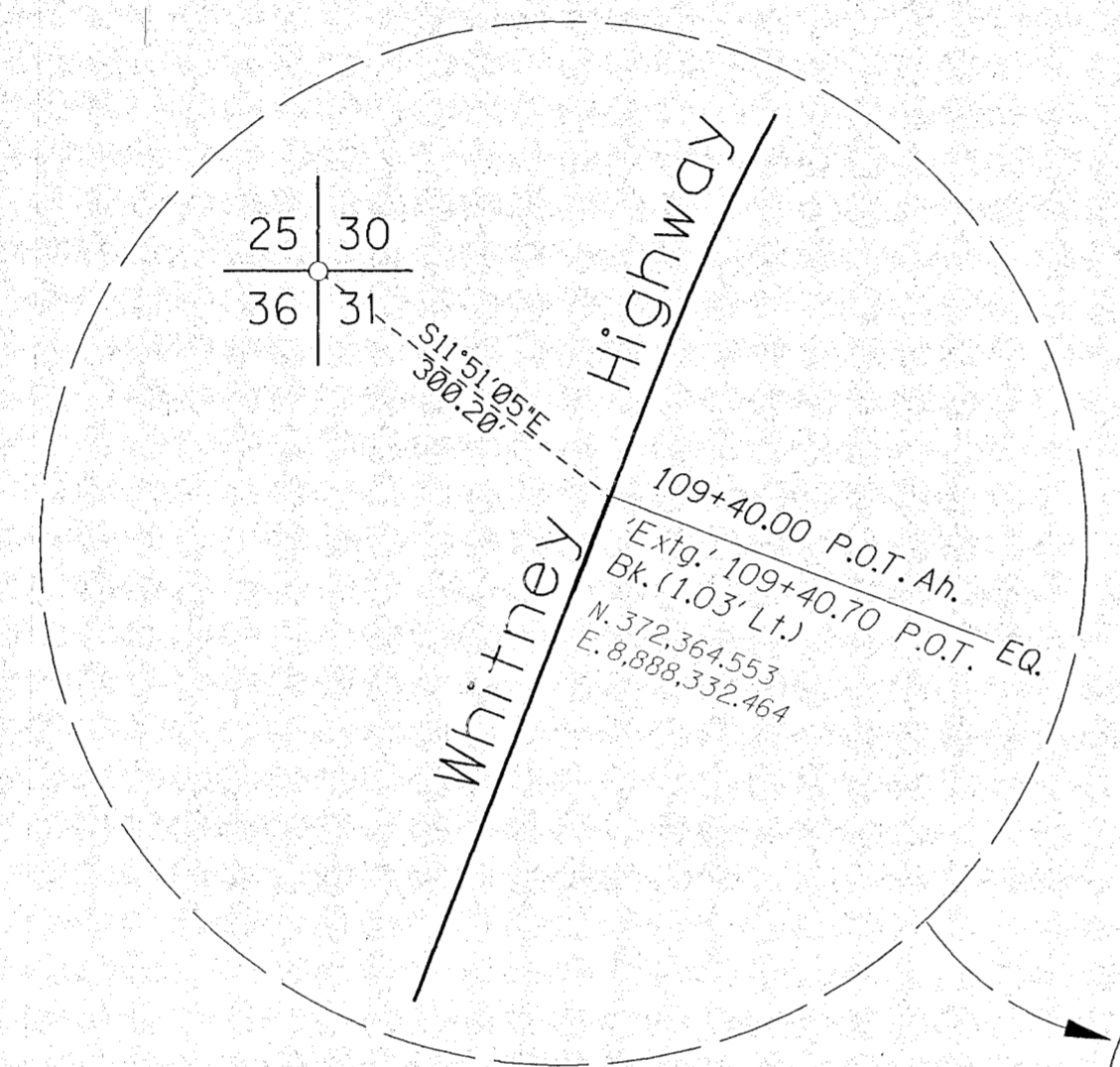
SEC. 36, T. 10 S., R. 39 E., W.M.
 SEC. 30, 31, T. 10 S., R. 40 E., W.M.
 BAKER COUNTY, OREGON

BASIS OF BEARING AND
 CONTROL NETWORK SCHEMATIC
 NOT TO SCALE

REGISTERED
 PROFESSIONAL
 LAND SURVEYOR

 OREGON
 JULY 20, 1993
 MARK D. FILSINGER
 2613
 EXPIRES: 12/31/2013

LEGEND	
	SET NETWORK POINT
	HIGHWAY CENTER LINE



NARRATIVE

THE PURPOSE OF THIS SURVEY IS TO RESOLVE THE LOCATION OF THE EXISTING RIGHT-OF-WAY (R/W) FOR A PORTION OF THE WHITNEY HIGHWAY IN THE NW1/4 SEC. 36, T. 10 S., R. 39 E., W.M. AND THE W1/2 SECTION 30, T. 10 S., R. 40 E., W.M. BAKER COUNTY, OREGON. FOR THIS SURVEY, WE ESTABLISHED A CONTROL NETWORK, RECOVERED THE POSITION OF HIGHWAY MONUMENTS (MONS) IN THE AREA, AND MONUMENTED THE NEW R/W BOUNDARY AS PART OF THE OR7: POWDER RIVER - BUNDLE 457 SECTION.

EXISTING STATIONING FOR THE RANCHERIA BR. (NO. 7316), PORTION FROM 32+88.24 TO 46+07.63 ASSUMED A STATION OF 37+80 AT THE CENTER OF BEAM "D" AS PER DWG. NO. 9557. STATION 32+88.24 WAS ESTABLISHED AT THE RECORD DISTANCE AND AT THE SPLIT OF THE EXISTING ASPHALT. THE RECORD CURVE DELTA ANGLE, DEGREE OF CURVE AND SPIRAL LENGTHS FROM OREGON DEPARTMENT OF TRANSPORTATION (ODOT) DRAWING 5B-35-6 WERE THEN USED TO RE-ESTABLISH CENTER LINE.

STATIONING FOR THE PORTION FROM 109+40.70 TO 139+36.37 CAME FROM A SPLIT OF THE SALISBURY BRIDGE DETERMINED TO BE AT 123+75 USING CONSTRUCTION PLANS 4V-227. THE EXISTING ALIGNMENT FOR THIS PORTION WAS ESTABLISHED USING A BEST FIT OF THE HIGHWAY AND RECORD CURVE DELTA ANGLE, DEGREE OF CURVE AND SPIRAL LENGTHS FROM ODOT DRAWING 7B-07-07. THE OFFSETS FOR THE EXISTING R/W WERE GENERATED FROM THIS ALIGNMENT.

NEW RW PURCHASES WERE BASED ON THE CENTER LINE AS DESCRIBED BY ODOT CONSTRUCTION PLANS 42V-47.

THE BASIS OF BEARING WAS ESTABLISHED BY GPS. THIS SURVEY UTILIZES A LOCAL DATUM PLANE (LDP) WHICH IS RELATIVE TO THE OREGON COORDINATE SYSTEM (OCS) OF 1983 (CORS96, EPOCH 2002), NORTH ZONE, WITH RESPECT TO THE LOCAL LATITUDE AND GROUND ELEVATION. THE LDP COORDINATES DEFINE TRUE GROUND DISTANCES. TO CONVERT THE LDP COORDINATES, FOR THE CONTROL POINTS, TO THE OREGON COORDINATE SYSTEM OF 1983 (CORS96, EPOCH 2002), NORTH ZONE, MULTIPLY THE LDP COORDINATES BY 0.99975692.

OREGON DEPARTMENT OF TRANSPORTATION
 RIGHT-OF-WAY BOUNDARY MONUMENTATION MAP
 BUNDLE 457: RANCHERIA AND SALISBURY BRIDGES
 WHITNEY HIGHWAY NO. 71
 OR 7 M.P. 41.2 AND M.P. 42.3
 BAKER COUNTY

ODOT REGION 5
 3012 ISLAND AVENUE
 LA GRANDE, OR 97850
 KEY NO. 14227
 May 3, 2012
 NOT TO SCALE
 SHEET 1 OF 5

FILED Sept. 27, 2012
 BAKER COUNTY SURVEYOR
 SURVEY NO. 10-39-177 / 10-40-210