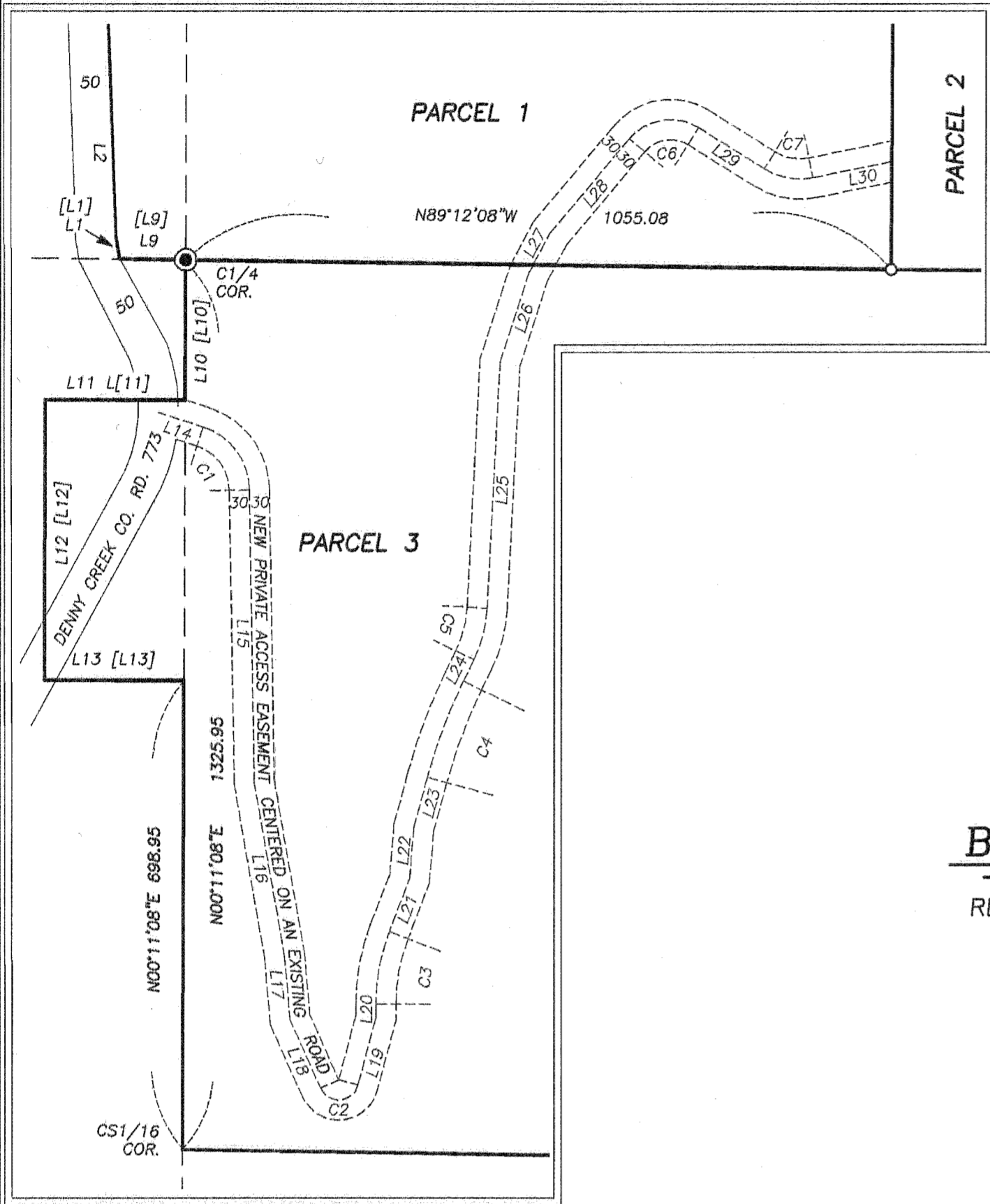


# LAND PARTITION PLAT NO. 2008-033

BEING A PARTITION OF PARCEL 1 OF LAND PARTITION NO. 2000-008  
SITUATED IN THE SW1/4 AND NW1/4 SECTION 36, T.10S., R.39E.,  
AND IN THE NW1/4 AND SW1/4 SECTION 1 AND IN THE NE1/4,  
SE1/4, SW1/4 AND NW1/4 SECTION 2, T.11S., R.39E., W.M.,  
BAKER COUNTY, OREGON

DETAIL  
SCALE: 1" = 200'

SURVEYED AUGUST 18, 2008



## BASIS OF BEARINGS

RECORD SURVEY NO. 11-39-157  
AS SHOWN

SCALE: 1" = 500'

T.10S., R.39E., W.M.  
BASIS OF BEARINGS  
(S89°57'22"W 2640.84)  
(S89°57'22"W 2640.84)

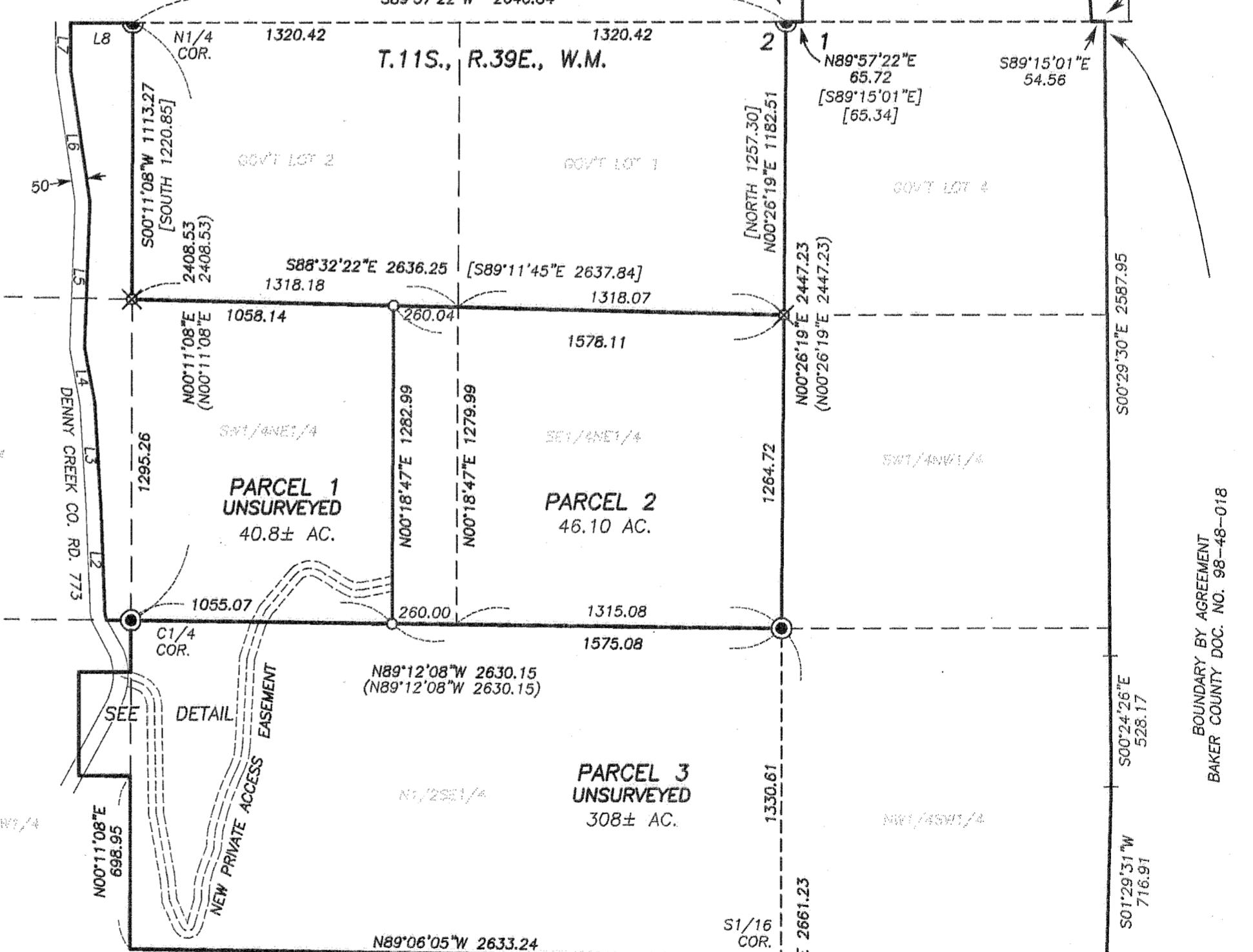
INITIAL POINT  
NE COR.  
SEC. 2

### LINE TABLE

LINE	BEARING	DIST.
L1	N09°04'10"W	35±
[L1]	[N09°04'10"W]	[162.98]
L2	N02°07'19"W	414.81
L3	N03°26'56"W	425.53
L4	N10°18'32"W	228.87
L5	N02°07'53"E	588.93
L6	N08°31'20"W	527.82
L7	N00°23'00"W	202.62
L8	N89°57'22"E	251.84
[L8]	[EAST]	[251.84]
L9	N89°12'08"W	86.56
[L9]	[WEST]	[86.56]
L10	N00°11'08"E	209.00
[L10]	[NORTH]	[209.00]
L11	S89°48'52"E	209.00
[L11]	[EAST]	[209.00]
L12	N00°11'08"E	418.00
[L12]	[NORTH]	[418.00]
L13	N89°48'52"W	209.00
[L13]	[WEST]	[209.00]
L14	S72°00'00"E	70.60
L15	S01°00'00"E	436.50
L16	S10°00'00"E	261.98
L17	S05°00'00"E	96.64
L18	S24°00'00"E	110.87
L19	N15°00'00"E	103.81
L20	NORTH	20.77
L21	N21°00'00"E	84.34
L22	N05°00'00"E	77.01
L23	N15°00'00"E	77.06
L24	N26°00'00"E	35.52
L25	N03°00'00"E	367.41
L26	N18°00'00"E	141.57
L27	N28°00'00"E	64.15
L28	N40°00'00"E	184.41
L29	S58°00'00"E	116.00
L30	N78°30'20"E	120.11

### CURVE TABLE

CURVE	RADIUS	DELTA	LENGTH	LONG CHORD BEARING-DIST.
C1	100.00	71°00'00"	123.92	S36°30'00"E 116.14
C2	30.00	141°00'00"	73.83	N85°30'00"E 56.56
C3	300.00	21°00'00"	109.96	N10°30'00"E 109.34
C4	800.00	11°00'00"	153.59	N20°30'00"E 153.35
C5	200.00	23°00'00"	80.29	N14°30'00"E 79.75
C6	80.00	82°00'00"	114.49	N81°00'00"E 104.97
C7	100.00	43°29'40"	75.91	S79°44'50"E 74.10



## LEGEND

- FOUND 1/2" GALV. IRON PIPE WITH ATTACHED BAGETT, GRIFFITH & BLACKMAN BRASS CAP FROM RECORD SURVEY NO. 11-39-157
- ⊗ SET 5/8"X30" IRON PIN WITH ATTACHED ALUMINUM CAP MARKED BGB SURVEY MARKER, AND WITH APPROPRIATE 1/16 CORNER DESIGNATIONS
- SET 5/8"X30" IRON PIN WITH ATTACHED YELLOW PLASTIC CAP MARKED BGB SURVEY MARKER
- [ ] RECORD BEARING AND DISTANCE FROM RECORD LAND PARTITION PLAT NO. 2000-008
- ( ) RECORD BEARING AND DISTANCE FROM RECORD MAP OF SURVEY NO. 11-39-157

REGISTERED  
PROFESSIONAL  
LAND SURVEYOR

OREGON  
JULY 9, 2009  
MICHAEL C. SPRINGER  
#70918  
EXPIRES: 6/30/2010

I DO HEREBY CERTIFY THAT THIS IS A TRUE AND EXACT  
COPY OF LAND PARTITION PLAT NO. 2008-033

BAGETT, GRIFFITH AND BLACKMAN  
PROFESSIONAL LAND SURVEYORS  
217 N. CANYON BLVD.  
JOHN DAY, OREGON 97845  
(541) 575-1251

11 12

SHEET 1 OF 2

B08 39 0157

B08 39 0158

BOUNDARY BY AGREEMENT  
BAKER COUNTY DOC. NO. 98-48-018

B08 39 0159

FILED September 24, 2008  
BAKER COUNTY SURVEYOR  
SURVEY NO. 10-39-173 MP  
11-39-170 MP