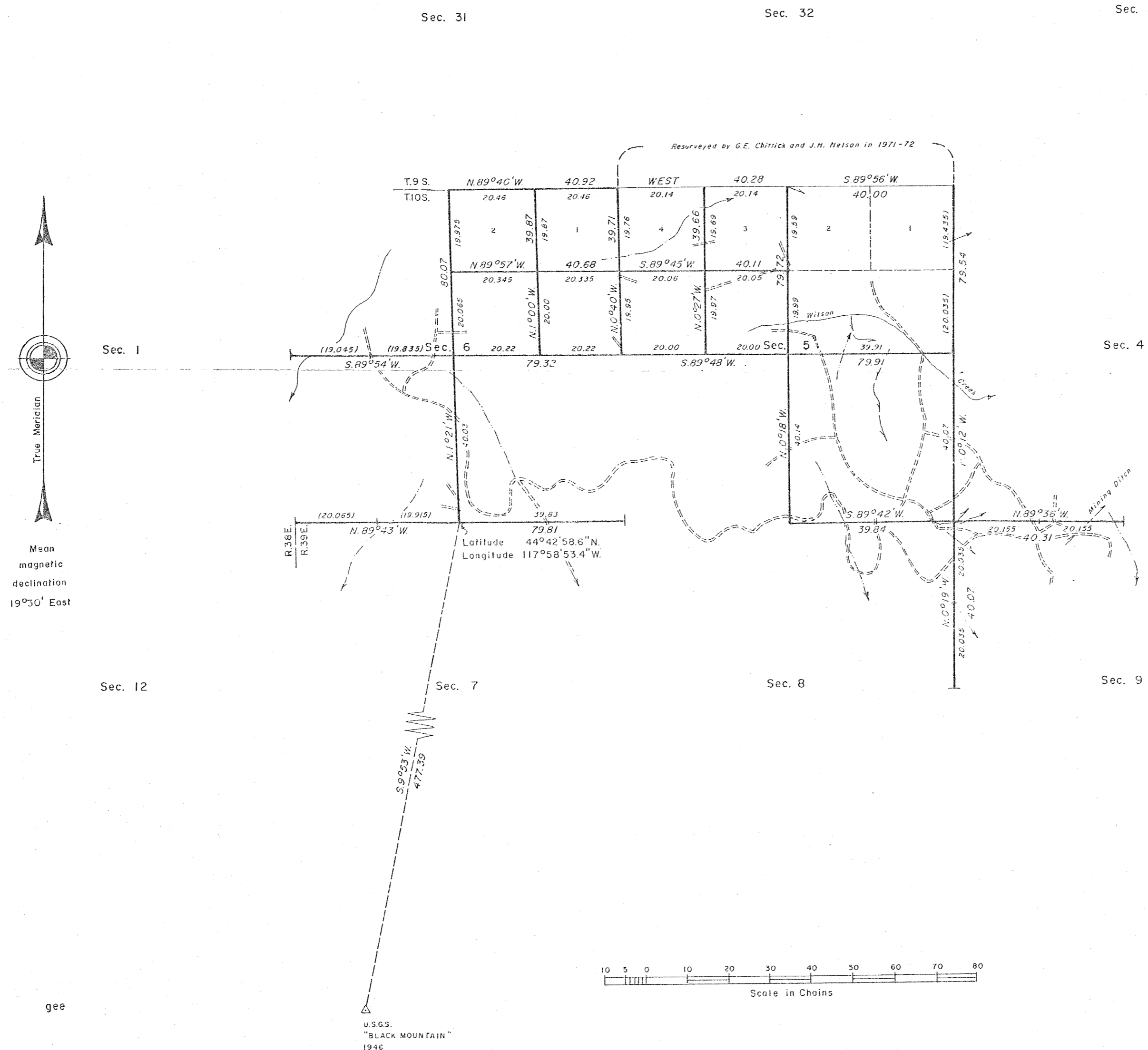


TOWNSHIP 10 SOUTH, RANGE 39 EAST, OF THE WILLAMETTE MERIDIAN, OREGON.

DEPENDENT RESURVEY AND SUBDIVISION OF SECTIONS 5 AND 6



A history of surveys is contained in the field notes.

This plat represents a dependent resurvey of a portion of the north boundary and subdivisional lines, T. 10 S., R. 39 E., Willamette Meridian, Oregon, designed to restore the corners in their true original locations according to the best available evidence, and the subdivision of sections 5 and 6.

The lottings and areas are as shown on the plat approved November 8, 1879.

The survey was executed by William D. Kimmel, Cadastral Surveyor, beginning July 13, 1983, and completed August 29, 1983, pursuant to Special Instructions dated June 15, 1983, for Group No. 1163, Oregon.

Timber in this area consists of pine, fir, larch, and juniper.

UNITED STATES DEPARTMENT OF THE INTERIOR
BUREAU OF LAND MANAGEMENT
Portland, Oregon August 23, 1985

This plat is strictly conformable to the approved field notes, and the survey, having been correctly executed in accordance with the requirements of law and the regulations of this Bureau, is hereby accepted.

For the Director

William W. Glenn

Chief Cadastral Surveyor of Oregon

FILED 2-19-87
BAKER COUNTY SURVEYOR
SURVEY NO. 10-39-81