

RUSTY BULL CADASTRAL SURVEY

WALLOWA-WHITMAN NATIONAL FOREST

LEGEND

- (F) = FOUND OR MEASURED
- (R1) = RECORD - GLO VOLUME R 246, 1881
- (R2) = RECORD - GLO VOLUME R 257, 1881
- (R3) = RECORD - GLO VOLUME R 252, 1881
- ⊕ = FOUND MONUMENT AS SHOWN ON CORNER MONUMENT FORM FOR SECTION CORNER
- ⊕ = SET 2 1/2 X 30° ALUMINUM PIPE WITH 3" CAP FOR CLOSING CORNER
- ⊕ = FOUND MONUMENT AS SHOWN ON CORNER MONUMENT FORM FOR ONE-QUARTER SECTION CORNER
- ⊕ = SET 2 1/2 X 30° ALUMINUM PIPE WITH 3" CAP FOR CENTER ONE-QUARTER CORNER
- ⊕ = SET 2 1/2 X 30° ALUMINUM PIPE WITH 3" CAP FOR ONE-SIXTEENTH CORNER

- N.F.S.L. = NATIONAL FOREST SYSTEM LANDS
- PRIVATE = PRIVATE OWNERSHIP
- = NATIONAL FOREST SYSTEM LANDS BOUNDARY LINE POSTED TO STANDARD.
- - - - - = FENCE LINE

HISTORY

The boundaries of Township 10 South, Range 38 East were surveyed by U.S. Deputy Surveyor Eugene P. McCormack, under contract No. 398. The township was subdivided by U.S. Deputy Surveyor Herman D. Graddon under contract No. 409, between June 8th and 19th, 1882. The final oaths were taken July 10, 1892.

Under U.S. Survey/Group 350 BLM Cadastral Surveyors Owen C. Chatters II, Peter A. Peterson and James J. Carlson remonumented many of the corners found on this project during a period which spanned four years, beginning in September 1971 and ending in August 1975.

There is evidence (certified record of land corner monumentation) that Harry C. Hilderbrand, Oregon RLS 1898, monumented corners in Sections 31 and 32, T.10 S., R.38 E. in 1982 and 1983.

NOTES

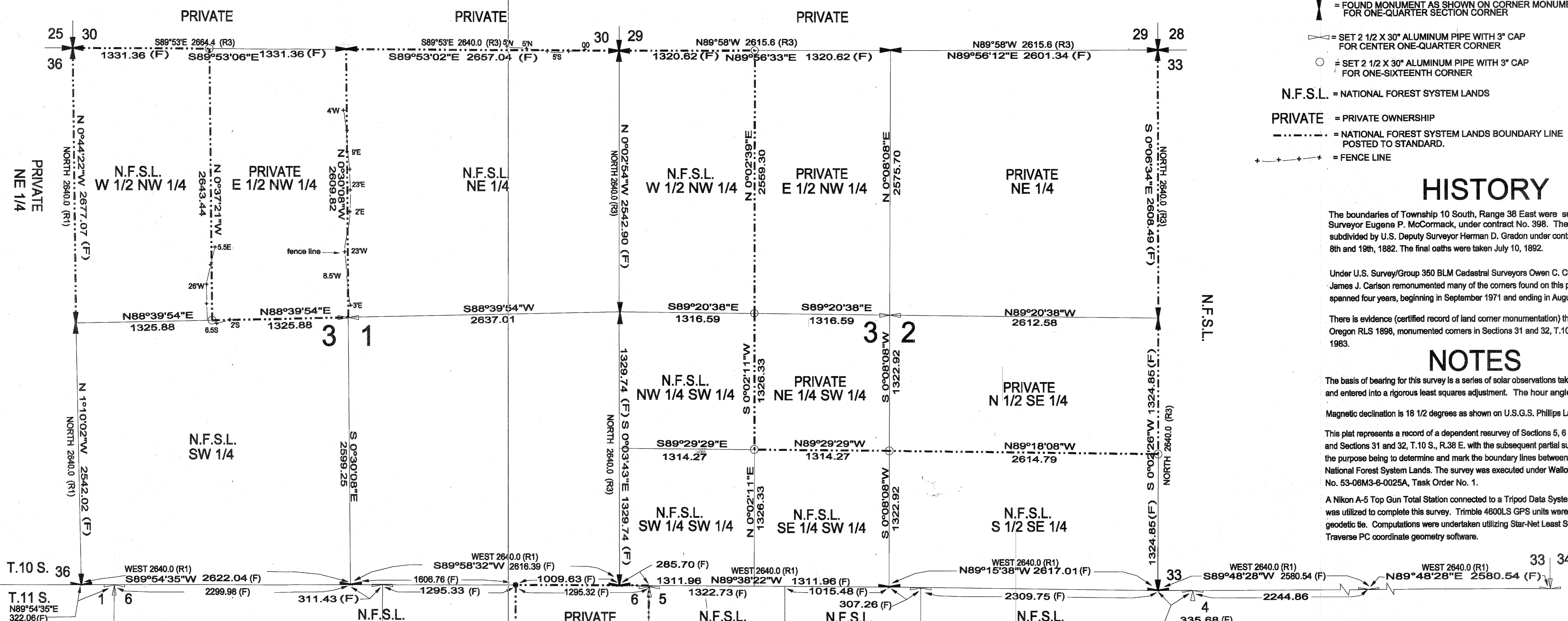
The basis of bearing for this survey is a series of solar observations taken throughout the project and entered into a rigorous least squares adjustment. The hour angle method was utilized.

Magnetic declination is 18 1/2 degrees as shown on U.S.G.S. Phillips Lake quadrangle.

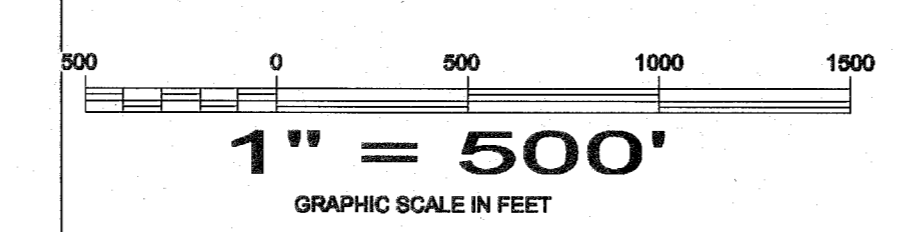
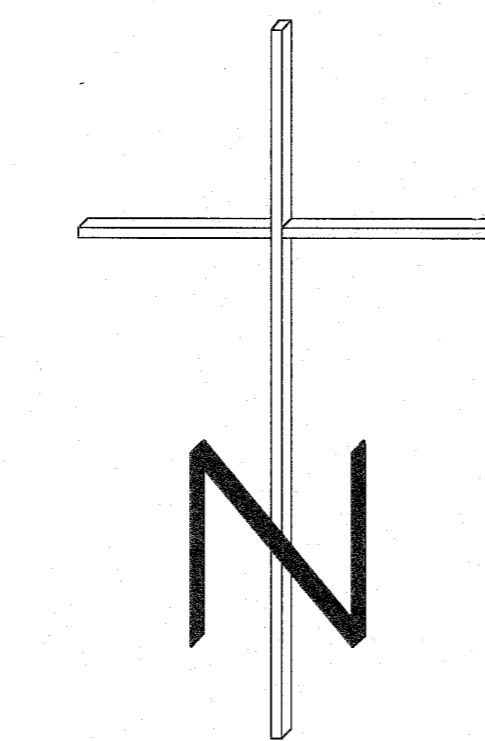
This plat represents a record of a dependent resurvey of Sections 5, 6 and 7, T.11 S., R.38 E. and Sections 31 and 32, T.10 S., R.38 E. with the subsequent partial subdivision of each section, the purpose being to determine and mark the boundary lines between private ownership and National Forest System Lands. The survey was executed under Wallowa-Whitman N.F. Contract No. 53-06M3-6-0025A, Task Order No. 1.

A Nikon A-5 Top Gun Total Station connected to a Tripod Data Systems 500T data collector was utilized to complete this survey. Trimble 4800LS GPS units were utilized to complete the geodetic tie. Computations were undertaken utilizing Star-Net Least Squares adjustment and Traverse PC coordinate geometry software.

The procedures used in this survey were in accordance with the contract specifications, the Manual of INSTRUCTIONS FOR THE SURVEY OF THE PUBLIC LANDS OF THE UNITED STATES 1973 and Oregon State law. Lost or obliterated corners where reestablished in accordance with the above referenced manual. A complete description of the corners found, set or reestablished can be found on Corner Record Forms filed with the Baker County Surveyor. This plat represents field surveys shown in field books and on raw data sheets which are made a part hereof.



SEE BAKER COUNTY SURVEY NUMBER _____



SURVEYOR'S CERTIFICATE

This plat correctly represents a survey made by me or under my direction in conformance with the statutes of Oregon and at the request of the USDA Forest Service during the fall of 1996 and spring, summer and fall of 1997.

REGISTERED PROFESSIONAL LAND SURVEYOR
R. David Schurian 5/14/98
 OREGON
 JUNE 16, 1975
 R. DAVID SCHURIAN
 1060

R. David Schurian, PLS
 Oregon Registration No. 1060

EXAMINED AND ACCEPTED FOR THE U.S. FOREST SERVICE
 THIS 22 DAY OF MAY, 1998
Roger Green COR
 I CERTIFY THAT THIS SURVEY WAS PERFORMED AT THE REQUEST OF THE WALLOWA-WHITMAN NATIONAL FOREST SUPERVISOR
William C. Heath 5/22/98
 SIGNATURE DATE

FILED May 26, 1998
 BAKER COUNTY SURVEYOR
 SURVEY NO. 10-38-120

SHEET 1 OF 1

RECORD OF SURVEY
 SECTIONS 31 & 32, T.10 S., R.38 E.
 WILLAMETTE MERIDIAN,
 BAKER COUNTY, OREGON

Western OUTBACK INCORPORATED
 LAND & MINERAL SURVEYORS
 1440 W. RANCHO FELIZ PL., TUCSON, AZ., 85737-2354
 PHONE & FAX (602) 544-4333