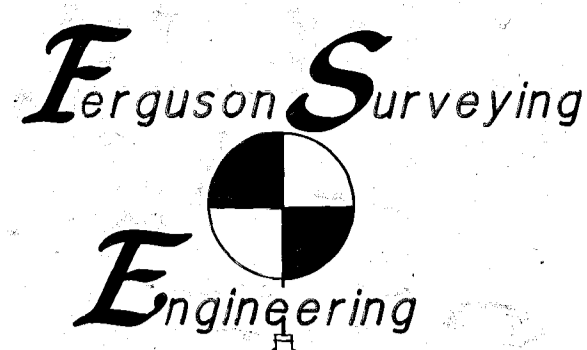


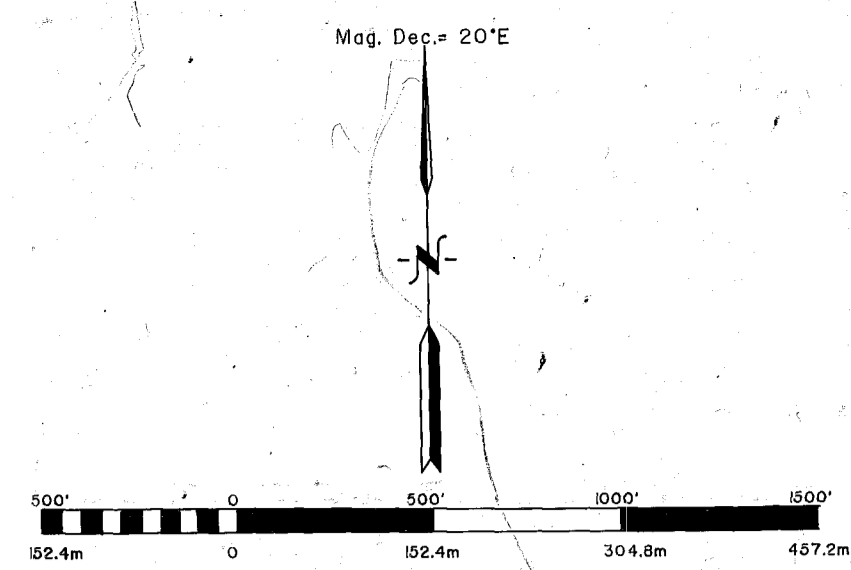
SUBDIVISION OF SECTIONS 13 & 14
T.10S., R.38E., W.M.
BAKER COUNTY OREGON

FOR: U.S.A. Wallowa Whitman National Forest
BY: Douglas M. Ferguson, Ken Delano, and D. Mitchell Ferguson
DRAWN BY: Mollie Ferguson Wood



Mt. Vernon Oregon
(phone) 932-4520

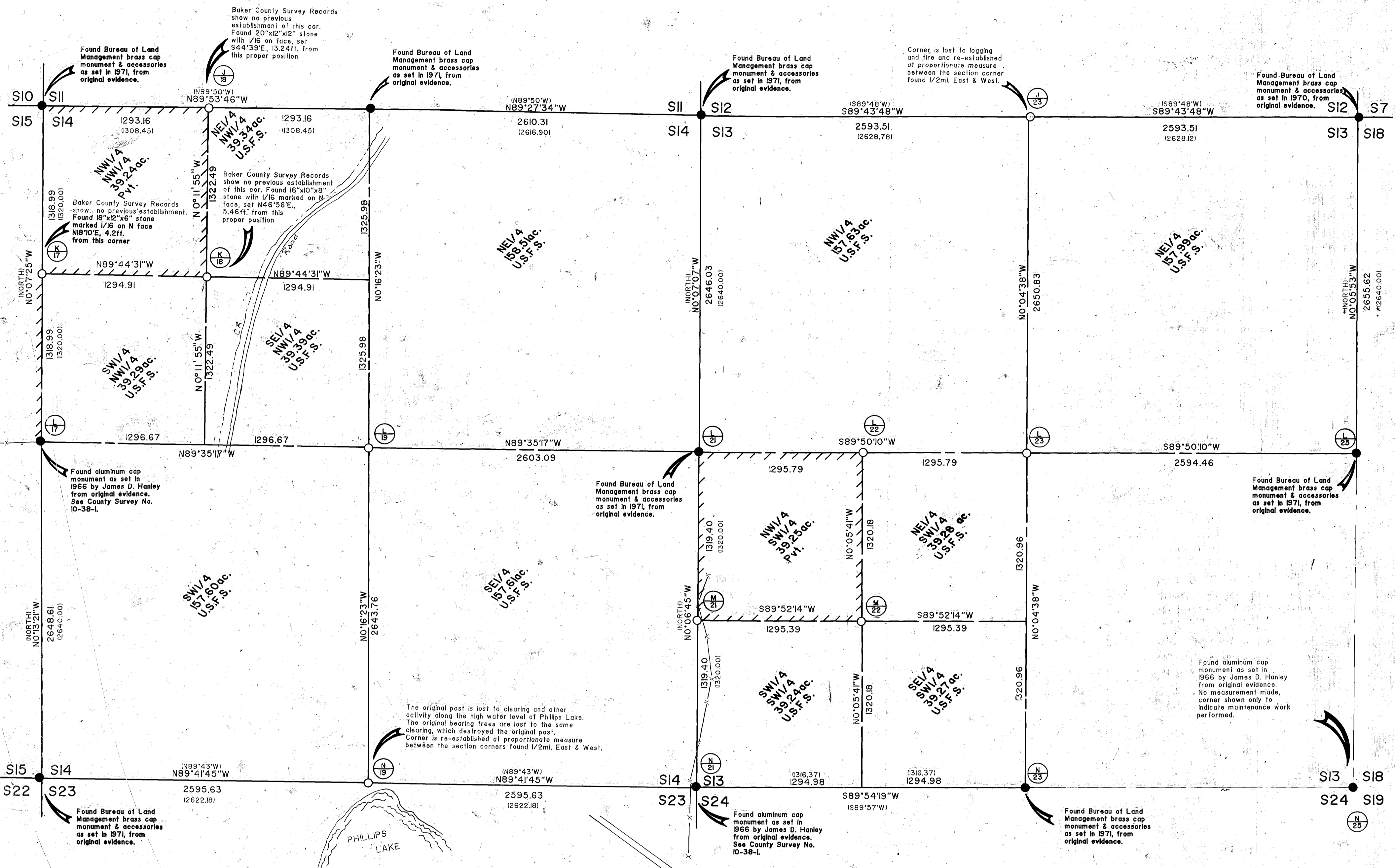
PORTION BRIDGE CADASTRAL SURVEY



- LEGEND
- Set 2-1/2"x30" aluminum pipe with 3-1/2" aluminum cap stamped as shown in the "MONUMENTATION".
- Found monument of record. See "HISTORY" and notes on map at each corner.
- Record bearing or distance as reported by William R. Gradon, in the original survey of the subdivision of this T.10S., R.38E.
- Record bearing or distance as reported by Timothy W. Davnport in 1863, contract no. 102.
- Marked forest boundary by steel post with boundary signs at max. intervals of 250'.
- Fence Line

SCALE: 1"=500'

BASIS OF BEARING
SOLAR OBSERVATION WITH TRUE MERIDIAN THROUGH CENTER LINE OF SEC. 14. MAGNETIC COMPASS IS RELIABLE IN THIS AREA & MAY BE USED TO EVALUATE BEARING TREES AS SHOWN IN THIS SURVEY



HISTORY
In July, 1863 Timothy W. Davnport, performed the original survey of the Range Line between R.38 & 39E., T.10S., under General Land Office Contract No. 102.
In June, 1882 William R. Gradon, performed the subdivision of this T.10S., R.38E., under General Land Office Contract No. 409.
In Feb. and March, 1866 James D. Hanley, P.E. No. 2808 monumented the 1/4 S15/S14 and the Cor. Secs. 13/14/23/24, as based on the recovery of original evidence. This work is shown on Baker County Survey No. 10-38-1. In April & May, 1866 Hanley monumented the Corner Secs. 13/18/24 on the Range Line between R.38 & 39E. as based on the recovery of original evidence. This work is shown on a map obtained in the County Surveyors Office, this map has the signature of James D. Hanley and was performed for Baker County, Cal. Pacific-Pacific Utilities Company, Map of survey no. 10-39-3.
In 1971 Owen C. Chatters II & James J. Carlson, Cadastral Surveyors of the Bureau of Land Management, (any use of "BLM" on this map refers to such Bureau of Land Management) Remonumented corners in this T.10S., R.38E., as based on original evidence as recovered by them. The Field Notes are on file with the BLM. Such work is performed under special instructions dated May 3, 1957 and approved May 6, 1957 which provide for surveys include under U.S. Survey/Group Number 350.

MONUMENTATION
See Standard U.S.F.S. "INDEX No." in the circle below and on the corresponding circle on the Map above. Refer to CERTIFIED RECORD OF LAND CORNER MONUMENTATION forms, as referenced to this Map of Survey and filed in the office of the Baker County Surveyor. These forms give complete detail as to the History, evidence recovered, method of establishment, description of the monumentation, and all information regarding unrecorded evidence as generated by this survey.
Monumentation basically consists of the following: Monuments as shown in the LEGEND are stamped as shown below. Bearing Trees or other accessories as shown below. Bearing Tree signs are nailed above the tree. Warning signs nailed to the back of the tree, brass washer stamped PLS 848 nailed on the blaze above the BT scribble and painting a 6" red band at breast height around each tree. Set steel fence posts with warning and/or boundary signs on the property line, each way from property corners and within 5 ft. in a cardinal direction from controlling corners.

NARRATIVE
This survey is performed under contract for the Wallowa Whitman National Forest, the purpose of which is the establishment and marking of the Forest Boundary as shown on this map.
In order to perform the required Survey, the exterior lines of Sections 13 and 14 are retraced as required. All the controlling corners as previously monumented by James Hanley and the BLM are recovered. The 1/4 S22/S23 is determined to be lost to fire and logging activity and is re-established of proportionate measure between corners found 1/2mi. East and West. The 1/4 S14/S23 is determined to be lost near the high water level of Phillips Lake and re-established of proportionate measure between corners found 1/2mi. East and West.
The sections are then subdivided in a normal manner. The required interior corners are established and the pertinent property lines are marked as shown.
The topography and features as shown on this map are from actual files to the survey control network.
The "CERTIFIED RECORD OF LAND CORNER MONUMENTATION" Forms as referenced to this Map and the notes shown on the Map should be considered a substantial part of this "NARRATIVE", as they contain the detailed information as to the evaluation of evidence and monumentation work performed.
Positional control for this survey is provided by a closed traverse network. LIETZ SDM 3E, Electronic tachometer is used to obtain the measurements and HP-85B computer system is used to perform the computations. Field Notes and computations are on file in the office of "FERGUSON SURVEYING & ENGINEERING" Mt. Vernon Oregon.
I Douglas M. Ferguson, Registered Professional Land Surveyor, in the State of Oregon, hereby certify that this plot, notes and records hereon or referenced are a correct representation of the survey I performed during, Aug. 1989, for the U.S. Forest Service in accordance with the statutes of the State of Oregon and the articles of my Contract, No. 53-04M3-8-0330.

- TIOS R38E S15 S14 Ponderosa Pine 16" dia. Bears S18°58'W, 6.01ft., scribble/W1/6 S14 BT
Ponderosa Pine 16" dia. Bears N70°16'E, 2.11ft., scribble/W1/6 S14 BT
TIOS R38E S12 S13 Ponderosa Pine 16" dia. Bears N 0°31'W, 37.91ft., scribble/4 S12 BT
Ponderosa Pine 14" dia. Bears N82°2'W, 53.1ft., scribble/4 S12 BT
Ponderosa Pine 8" dia. Bears S78°40'W, 5.01ft., scribble/4 S13 BT
Ponderosa Pine 12" dia. Bears S78°33'E, 27.81ft., scribble/4 S13 BT
TIOS R38E S10 S9 Ponderosa Pine 10" dia. Bears N85°52'W, 37.51ft., scribble/W1/6 S14 BT
Ponderosa Pine 12" dia. Bears S52°19'E, 33.01ft., scribble/W1/6 S14 BT
TIOS R38E S14 S13 Ponderosa Pine 12" dia. Bears N40°59'E, 28.71ft., scribble/W1/6 S14 BT
Ponderosa Pine 16" dia. Bears S37°39'W, 33.51ft., scribble/W1/6 S14 BT
TIOS R38E S14 S13 Ponderosa Pine 16" dia. Bears S45°02'E, 39.31ft., scribble/C1/4 S14 BT
Ponderosa Pine 14" dia. Bears S70°41'W, 27.91ft., scribble/C1/4 S14 BT
Ponderosa Pine 10" dia. Bears S70°41'W, 27.91ft., scribble/C1/4 S14 BT
Ponderosa Pine 8" dia. Bears S80°0'E, 86.51ft., scribble/C1/4 S14 BT
TIOS R38E S12 S13 Ponderosa Pine 12" dia. Bears N60°45'W, 35.11ft., scribble/TIOS R38E S14 BT
Ponderosa Pine 14" dia. Bears N63°40'E, 24.21ft., scribble/TIOS R38E S14 BT
Ponderosa Pine 16" dia. Bears S77°00'W, 40.61ft., scribble/TIOS R38E S24 BT
Ponderosa Pine 10" dia. Bears S77°00'W, 40.61ft., scribble/TIOS R38E S24 BT
TIOS R38E S12 S13 Ponderosa Pine 12" dia. Bears N27°30'W, 23.51ft., scribble/TIOS R38E S13 BT
Ponderosa Pine 14" dia. Bears N33°00'E, 35.01ft., scribble/TIOS R38E S13 BT
Ponderosa Pine 16" dia. Bears S37°15'E, 40.61ft., scribble/TIOS R38E S13 BT
Ponderosa Pine 10" dia. Bears S46°15'W, 33.01ft., scribble/TIOS R38E S24 BT
TIOS R38E S14 S13 New Bearing Trees established this survey as required for proper accessories)
Ponderosa Pine 16" dia. Bears S65°19'W, 5.31ft., scribble/C1/4 S13 BT
Ponderosa Pine 12" dia. Bears S54°44'E, 2.21ft., scribble/C1/4 S13 BT
TIOS R38E S14 S13 New Bearing Trees established this survey as required for proper accessories)
Ponderosa Pine 16" dia. Bears N3°50'W, 9.81ft., scribble/C1/4 S13 BT
Ponderosa Pine 14" dia. Bears S14°37'W, 27.91ft., scribble/C1/4 S13 BT
Ponderosa Pine 10" dia. Bears S8°36'W, 33.21ft., scribble/C1/4 S13 BT
Ponderosa Pine 8" dia. Bears N82°0'E, 35.01ft., scribble/C1/4 S13 BT
TIOS R38E S14 S13 Ponderosa Pine 12" dia. Bears N44°16'E, 23.41ft., scribble/W1/6 S13 BT
Ponderosa Pine 10" dia. Bears S75°21'E, 16.71ft., scribble/W1/6 S13 BT
TIOS R38E S14 S13 Ponderosa Pine 16" dia. Bears S78°44'W, 16.71ft., scribble/S1/6 S14 BT
Ponderosa Pine 14" dia. Bears N27°50'E, 25.61ft., scribble/S1/6 S13 BT
TIOS R38E S14 S13 Set 5/8"x30" iron pins, with aluminum caps marked PLS 848 and steel guard posts with warning signs as follows:
Ponderosa Pine 16" dia. Bears S18°58'W, 6.01ft., scribble/4 S14 BT
Ponderosa Pine 14" dia. Bears S80°15'E, 46.61ft., scribble/4 S13 BT
Ponderosa Pine 12" dia. Bears S74°30'W, 26.31ft., scribble/4 S13 BT
Ponderosa Pine 10" dia. Bears S74°30'W, 26.31ft., scribble/4 S13 BT
Ponderosa Pine 8" dia. Bears N3°50'W, 9.81ft., scribble/4 S13 BT
Ponderosa Pine 6" dia. Bears N8°14'E, 18.51ft., scribble/4 S13 BT
TIOS R38E S14 S13 New Bearing Trees established this survey as required for proper accessories)
Ponderosa Pine 16" dia. Bears N6°10'E, 52.41ft., scribble/4 S14 BT
Ponderosa Pine 14" dia. Bears S39°30'W, 75.21ft., scribble/4 S14 BT
TIOS R38E S14 S13 Ponderosa Pine 16" dia. Bears S65°19'W, 5.31ft., scribble/C1/4 S13 BT
Ponderosa Pine 12" dia. Bears S54°44'E, 2.21ft., scribble/C1/4 S13 BT
TIOS R38E S14 S13 Ponderosa Pine 16" dia. Bears N3°50'W, 9.81ft., scribble/C1/4 S13 BT
Ponderosa Pine 14" dia. Bears S14°37'W, 27.91ft., scribble/C1/4 S13 BT
Ponderosa Pine 10" dia. Bears S8°36'W, 33.21ft., scribble/C1/4 S13 BT
Ponderosa Pine 8" dia. Bears N82°0'E, 35.01ft., scribble/C1/4 S13 BT
TIOS R38E S14 S13 Ponderosa Pine 12" dia. Bears N44°16'E, 23.41ft., scribble/W1/6 S13 BT
Ponderosa Pine 10" dia. Bears S75°21'E, 16.71ft., scribble/W1/6 S13 BT
TIOS R38E S14 S13 Ponderosa Pine 16" dia. Bears S78°44'W, 16.71ft., scribble/S1/6 S14 BT
Ponderosa Pine 14" dia. Bears N27°50'E, 25.61ft., scribble/S1/6 S13 BT
TIOS R38E S14 S13 Set 5/8"x30" iron pins, with aluminum caps marked PLS 848 and steel guard posts with warning signs as follows:
Ponderosa Pine 16" dia. Bears S18°58'W, 6.01ft., scribble/4 S14 BT
Ponderosa Pine 14" dia. Bears S80°15'E, 46.61ft., scribble/4 S13 BT
Ponderosa Pine 12" dia. Bears S74°30'W, 26.31ft., scribble/4 S13 BT
Ponderosa Pine 10" dia. Bears S74°30'W, 26.31ft., scribble/4 S13 BT
Ponderosa Pine 8" dia. Bears N3°50'W, 9.81ft., scribble/4 S13 BT
Ponderosa Pine 6" dia. Bears N8°14'E, 18.51ft., scribble/4 S13 BT
TIOS R38E S14 S13 New Bearing Trees established this survey as required for proper accessories)
Ponderosa Pine 16" dia. Bears N6°10'E, 52.41ft., scribble/4 S14 BT
Ponderosa Pine 14" dia. Bears S39°30'W, 75.21ft., scribble/4 S14 BT

CORNER MAINTENANCE
See Standard U.S.F.S. "INDEX No." in the circle below and on the corresponding circle on the Map above. Refer to CERTIFIED RECORD OF LAND CORNER MONUMENTATION forms, as referenced to this Map of Survey and filed in the office of the Baker County Surveyor. These forms give complete detail as to the History, evidence recovered, method of establishment, description of the monumentation, and all information regarding unrecorded evidence as generated by this survey.
The caps are stamped as shown below, new accessories as required are shown below. Painted a 6" red band at breast height around all Bearing Trees. Attached warning and bearing tree signs as required. Set steel posts with warning and/or boundary signs on the property line, each way from property corners and within 5 ft. in a cardinal direction from controlling corners.

EXAMINED AND ACCEPTED FOR THE U.S. FOREST SERVICE
THIS 9th DAY OF December 91
William A. Stegner COR.
I CERTIFY THAT THIS SURVEY WAS PERFORMED AT THE REQUEST OF THE WALLOWA WHITMAN NATIONAL FOREST SUPERVISOR
SIGNATURE: Douglas M. Ferguson DATE: 12/5/91

