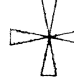






# McEWAN CADASTRAL SURVEY

## WALLOWA-WHITMAN NATIONAL FOREST

### LEGEND

- (F) = FOUND OR MEASURED.  
(R) = ORIGINAL GLO SURVEY BY WILLIAM R. GRADON IN JUNE 1882.
-  = FOUND MONUMENT AS SHOWN ON CORNER MONUMENTATION FORM
-  = SET 2 1/2 X 30" ALUMINUM PIPE WITH 3" CAP FOR 1/4 CORNER AS SHOWN ON CORNER MONUMENTATION FORM
-  = FOUND MONUMENT AS SHOWN ON CORNER MONUMENTATION FORM
-  = SET 2 1/2 X 30" ALUMINUM PIPE WITH 3" CAP FOR 1/16 CORNER AS SHOWN ON CORNER MONUMENTATION FORM
-  = NATIONAL FOREST SYSTEM LANDS BOUNDARY LINE POSTED TO STANDARD.

### NOTES

THIS SURVEY WAS PERFORMED AT THE REQUEST OF THE FOREST SUPERVISOR, WALLOWA-WHITMAN NATIONAL FOREST, BAKER CITY, OREGON. UNDER CONTRACT 53-04M3-4-0065.

THE PURPOSE OF THIS SURVEY WAS TO DETERMINE THE BOUNDARY LINES BETWEEN THE PRIVATE AND PUBLIC LAND ADMINISTERED BY THE U.S. FOREST SERVICE ALONG THE SECTION LINE COMMON TO SECTIONS 22 AND 23 AND AS THE LINE TRAVERSES THROUGH SECTION 15, ALL IN TOWNSHIP 10 SOUTH, RANGE 37 EAST, WILLAMETTE MERIDIAN.

BASIS OF BEARING IS GRID NORTH AS DERIVED FROM GPS COMPUTATIONS.

MAGNETIC DECLINATION IS 18 1/2° AS INDICATED ON THE U.S.G.S. SUMPTER QUADRANGLE.

REFERENCE IS MADE TO RAW DATA AND FIELD NOTES TITLED McEWAN SURVEY.

CORNERS WERE TIED UTILIZING TRIMBLE 4000 ST GPS RECEIVERS. TRAVERSE LINES WERE RUN USING A NIKON TOP GUN A-5 TOTAL STATION AND TDS 500T DATA COLLECTOR.

LOST OR OBLITERATED CORNERS WERE REESTABLISHED IN ACCORDANCE WITH THE B-L-M MANUAL. A COMPLETE DESCRIPTION OF THE CORNERS FOUND, SET OR REESTABLISHED CAN BE FOUND ON CORNER RECORD FORMS FILED WITH THE COUNTY SURVEYOR.

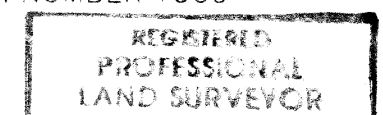
### HISTORY

THE SUBDIVISION OF TOWNSHIP 10 SOUTH, RANGE 37 EAST WAS COMPLETED IN JUNE AND JULY, 1882 UNDER THE DIRECTION OF WILLIAM R. GRADON, U.S. DEPUTY SURVEYOR. THE NOTES OF SAME APPEAR IN VOLUME R252, AVAILABLE AT THE SUPERVISOR'S OFFICE OF THE WALLOWA-WHITMAN NATIONAL FOREST OR THE BUREAU OF LAND MANAGEMENT OREGON STATE OFFICE. IN 1971 AND 1974 U.S.D.I., BUREAU OF LAND MANAGEMENT, CADASTRAL SURVEYOR OWEN C. CHATTERS, II AND LESTER E. FISCHER LOCATED AND REMONUMENTED MANY OF THE CORNERS ON THIS PROJECT. ONLY THE EAST AND WEST CORNERS OF SECTION 15 WERE NOT RECOVERED.

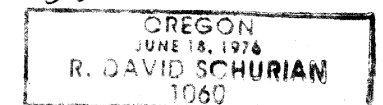
### SURVEYOR'S CERTIFICATE

THIS PLAT CORRECTLY REPRESENTS A SURVEY MADE BY ME IN CONFORMANCE WITH THE STATUTES OF OREGON AND AT THE REQUEST OF THE U.S.D.A. FOREST SERVICE DURING THE SUMMER OF 1995.

R. DAVID SCHURIAN, PLS, OREGON REGISTRATION NUMBER 1060



*R. David Schurian* 7/1/96



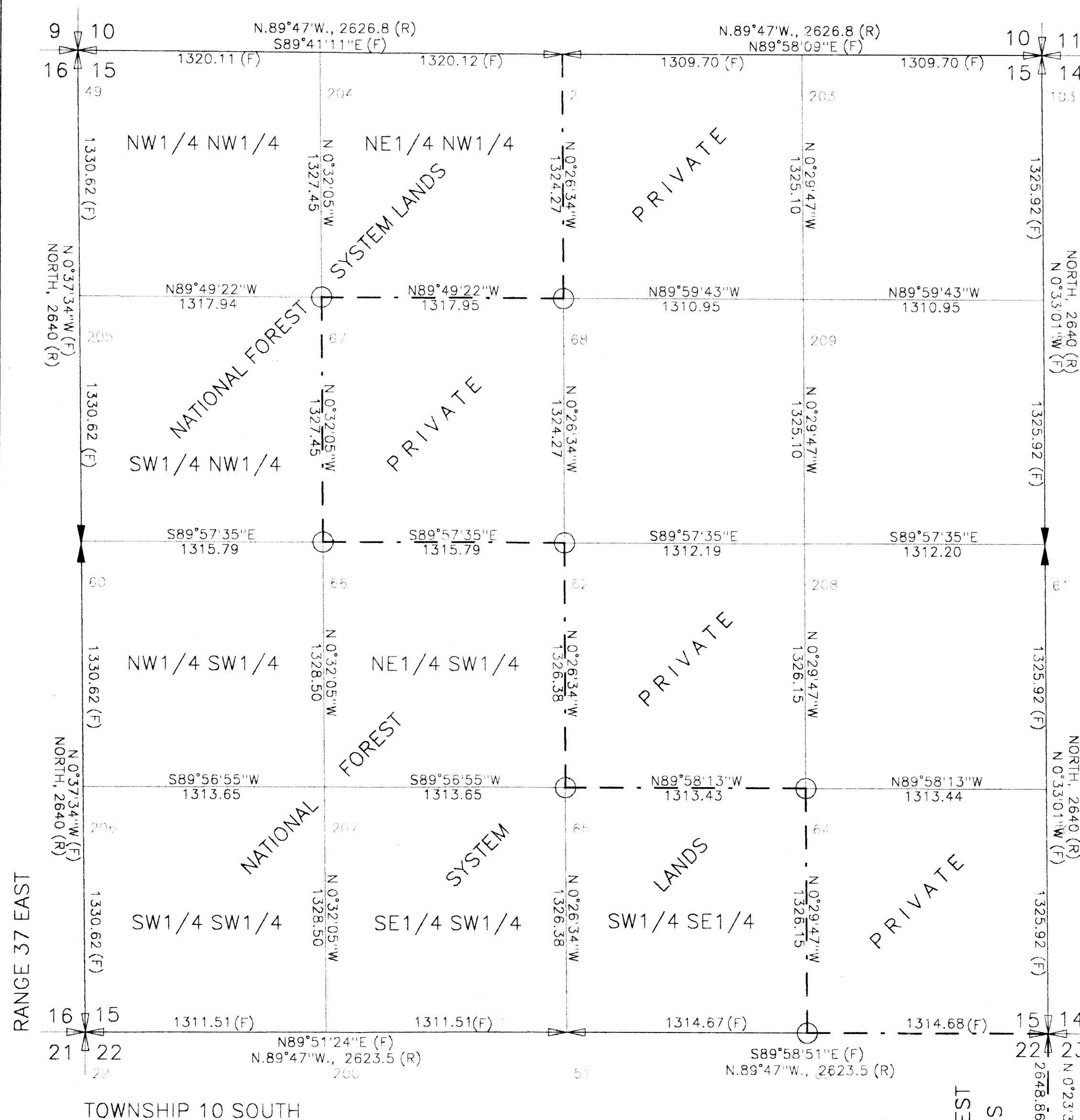
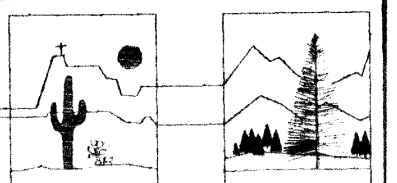
SHEET 1 OF 1

### RECORD OF SURVEY

THE RETRACEMENT OF THE SECTION LINE COMMON TO SECTIONS 22 AND 23 AND ALL OF SECTION 15, AND THE SUBDIVISION OF SECTION 15, ALL IN TOWNSHIP 10 SOUTH, RANGE 37 EAST, WILLAMETTE MERIDIAN, BAKER COUNTY, OREGON.

**Western**  
**OUTBACK** INCORPORATED

LAND & MINERAL SURVEYORS  
1440 W. RANCHO FELIZ PL., TUCSON AZ., 85737-2354  
PHONE & FAX (520) 544-4333



EXAMINED AND ACCEPTED FOR THE U.S. FOREST SERVICE  
THIS 15TH DAY OF JULY, 1996

*Roger Lee* COR  
I CERTIFY THAT THIS SURVEY WAS PERFORMED AT THE REQUEST  
OF THE WALLOWA-WHITMAN NATIONAL FOREST SUPERVISOR

*R. David Schurian* 7-15-96  
SIGNATURE DATE

