

THE FOLLOWING NOTES SHOW BEARINGS AND DISTANCE TIES FROM RE-MONUMENTED CORNERS, OR CORNERS ESTABLISHED ON THIS SURVEY TO MONUMENTS SET BY OTHER SURVEYORS FOR THE CORNER. ALSO SEE CORNER CERTIFICATES RECORDED AS PART OF THIS SURVEY. MYERS' MONUMENTS ARE 2" x 5/8" REBAR W/1/2" ALUM. CAPS. HABLETON'S MONUMENTS ARE 1/4" x 30" UNFLANGED IRON PIPES W/1/2" ALUM. CAPS.

- △ FOUND 2" x 5/8" REBAR BY MYERS, TIPPED OVER, ORIGINAL LOCATION UNKNOWN, NEAR CORNER POSITION.
- △ FOUND 5/8" REBAR BY MYERS, DESTROYED BY LOGGING, LAYING FLAT, ORIGINAL LOCATION UNKNOWN, N 82 1/2° E 8' FROM CORNER POSITION.
- △ FOUND 5/8" REBAR BY MYERS, S 80° 00' E - 11.7' FROM CORNER POSITION.
- △ FOUND REBAR BY MYERS, TIPPED OVER, ORIGINAL LOCATION UNKNOWN
- △ MONUMENT BY HABLETON, SET FOR CP-4, BEARS S 71° E - 3.6'
- △ MONUMENT BY HABLETON, SET FOR CP-5, BEARS S 44° 01' E - 4.9'
- △ MONUMENT BY HABLETON, SET FOR I-3, BEARS N 39 1/2° E - 10.1' (COMPASS BEARING).
- △ DOWN MONUMENT BY HABLETON, SET FOR P-1, BEARS N 49° 35' E - 27.7' ±.
- △ MONUMENT BY HABLETON, SET FOR HW-3, BEARS S 49° 29' E - 27.1'
- △ MONUMENT BY HABLETON, SET FOR HW-2, BEARS N 69° 13' W - 10.8'
- △ MONUMENT BY HABLETON, SET FOR HW-1, BEARS S 11° 22' W - 10.0' (COMPASS BEARING).
- △ MONUMENT BY HABLETON, SET FOR E-1, BEARS S 81° W - 6.5' (COMPASS BEARING).
- △ MONUMENT BY HABLETON, SET FOR C-1, BEARS S 59° 00' W - 7.3'.
- △ MONUMENT BY HABLETON, ABOUT READY TO FALL OVER, BEARS N 74° E - 4.9', (BY COMPASS).
- △ CORNER POSITION FALLS IN ROAD CUT BANK. SET WITNESS CORNER S 0° 04' 22" E - 5.00' FROM CORNER POSITION. MYERS MONUMENT WAS NOT FOUND.
- △ JUNIOR CORNER PROTECTION COR 3 OVERLAPS SENIOR LINE H-2 TO H-3, MS 332 BY 0.4'.

**HISTORY OF SURVEYS**

SECTIONS 10, 14 & 15, T.10S., R.35 1/2 E., W.M. WERE ORIGINALLY SUB-DIVIDED BY W.B. BARR, U.S. DEPUTY SURVEYOR, UNDER CONTRACT NO. 492, DATED AUGUST 22, 1883, DURING APRIL, 1884. MS 332 WAS SURVEYED BY CHARLES M. FOSTER, U.S. DEPUTY MINERAL SURVEYOR, IN DECEMBER, 1896. MS 508 WAS SURVEYED BY HORACE G. PEARSON, U.S. DEPUTY MINERAL SURVEYOR, IN NOVEMBER, 1902. MS 509 AMENDED WAS SURVEYED BY HORACE G. PEARSON IN MARCH, 1903. MS 727 WAS SURVEYED BY HORACE G. PEARSON IN DECEMBER, 1909.

IN 1967 AND 1968, CERTAIN CORNERS WERE REMONUMENTED OR ESTABLISHED AND SURVEYS WERE MADE IN SECTIONS 10, 14 & 15 BY LELAND L. MYERS, L.S. NO. 699. SEE MAP NO. 10-35 1/2-53, AND CORNER CERTIFICATES.

IN 1968, CERTAIN CORNERS WERE REMONUMENTED BY JAMES HABLETON L.S. NO. 645, IN MS 332, MS 508 AND MS 727. SEE MAP NO. 10-35 1/2-16 AND CORNER CERTIFICATES.

**NARRATIVE OF SURVEY**

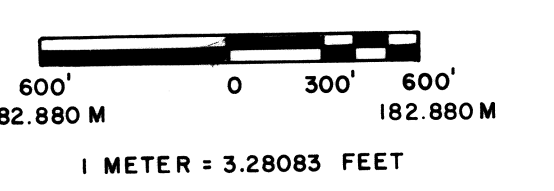
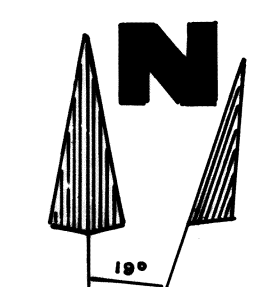
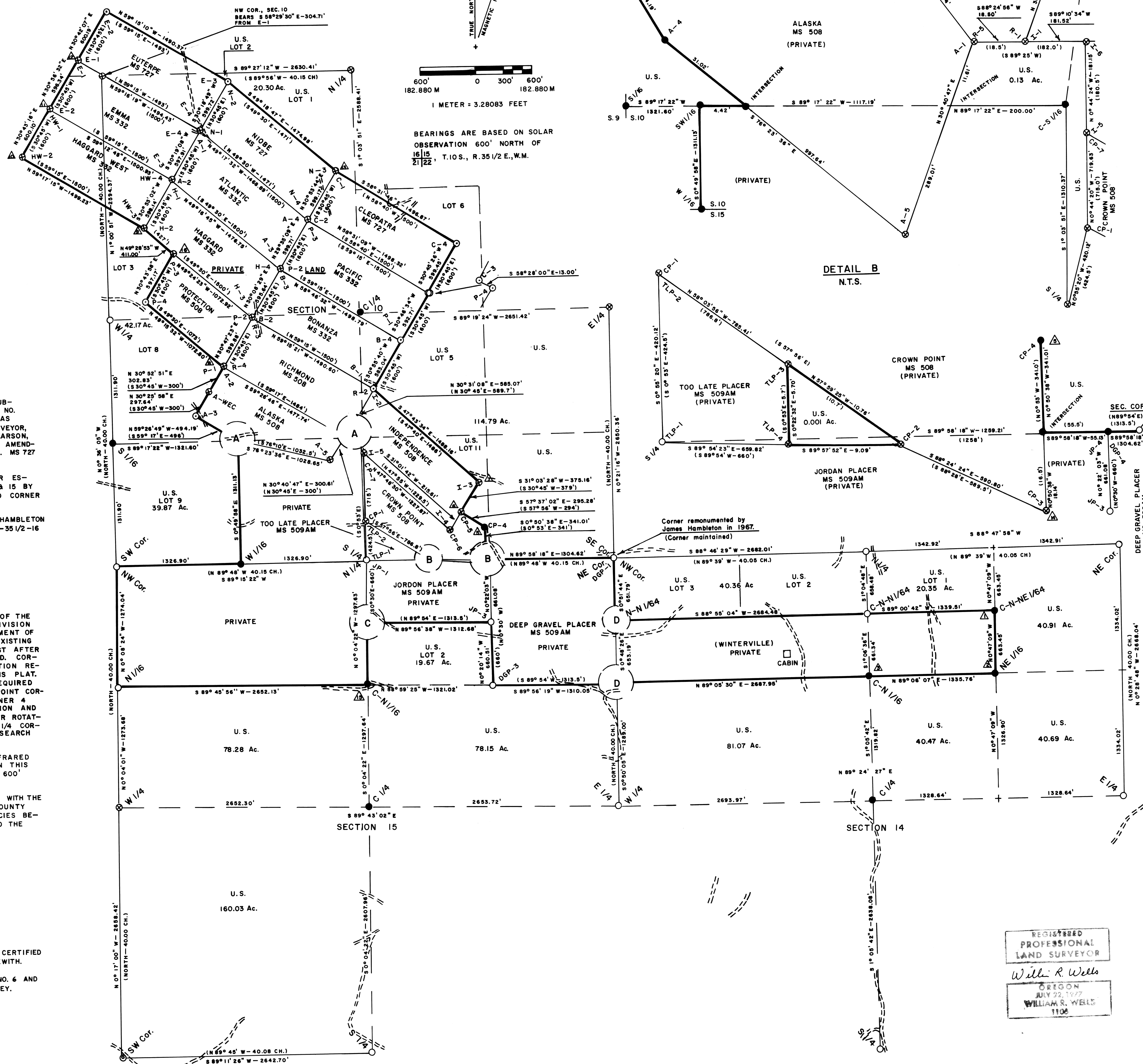
THIS SURVEY, MADE FOR THE U.S. FOREST SERVICE AS PART OF THE GIESER MINES CADASTRAL SURVEY, INVOLVED PARTIAL SUBDIVISION OF SECTIONS 10, 14 AND 15, T.10S., R.35 1/2 E., AND RETRACEMENT OF PORTIONS OF MS 332, 508, 509 AMENDED AND MS 727. THE EXISTING FOREST BOUNDARY AND FOREST BOUNDARY WHICH WILL EXIST AFTER LAND EXCHANGES ARE COMPLETE, WAS POSTED TO STANDARD CORNER SEARCH RECORDS. MONUMENTATION AND REMONUMENTATION RECORDS, HAVE BEEN RECORDED OR ARE RECORDED WITH THIS PLAT. ACCEPTABLE ORIGINAL EVIDENCE WAS FOUND FOR ALL REQUIRED CORNERS EXCEPT FOR THE N 1/4 OF SECTION 14, CROWN POINT CORNER 4 AND ALASKA CORNER 4, MS 508. CROWN POINT CORNER 4 AND ALASKA CORNER 4 HAD BEEN DESTROYED BY CONSTRUCTION AND WERE RE-ESTABLISHED BY THE COMPASS RULE METHOD AFTER ROTATING RECORD BEARINGS TO OBSERVED BEARINGS. THE NORTH 1/4 CORNER OF SECTION 14 COULD NOT BE FOUND AFTER DILIGENT SEARCH AND LELAND MYERS MONUMENTED CORNER WAS ACCEPTED.

OUR SURVEYS WERE MADE WITH T-16 THEODOLITE AND INFRARED DISTANCE MEASURING EQUIPMENT. AS STATED ELSEWHERE ON THIS PLAT, THE BASIS OF BEARINGS WAS A SOLAR OBSERVATION 600' NORTH OF THE SW CORNER OF SECTION 15.

ALSO SEE NARRATIVE OF CORNER MONUMENTATION RECORDED WITH THE CORNER CERTIFICATES BY THIS SURVEYOR, IN THE BAKER COUNTY SURVEYOR'S OFFICE. THIS NARRATIVE DETAILS DISCREPANCIES BETWEEN BEARINGS TO CORNER ACCESSORIES ON MS 332, AND THE PRECEDING SURVEY, MS 266A.

**NOTES**

FOR ADDITIONAL INFORMATION ON CORNERS MONUMENTED, SEE CERTIFIED RECORD OF LAND CORNER MONUMENTATION FORMS FILED HEREWITH. FIELD BOOK REFERENCE - TRAVERSE BOOKS NO. 1 THROUGH NO. 6 AND MONUMENTATION BOOK NO. 1, GIESER MINES CADASTRAL SURVEY.



BEARINGS ARE BASED ON SOLAR OBSERVATION 600' NORTH OF 16 1/2 T.10S., R.35 1/2 E., W.M.

**LEGEND**

- SET 2 1/2" x 30" ALUM. PIPE WITH 1/2" ALUM. CAP. BY TRAVERSE SURVEY.
- ⊙ SET 2 1/2" x 30" ALUM. PIPE WITH 1/2" ALUM. CAP. FROM EXISTING ORIGINAL EVIDENCE.
- FOUND MONUMENT RE-MONUMENTING OR ESTABLISHING CORNER BY LELAND MYERS, L.S. NO. 699, AS PART OF BAKER COUNTY SURVEY NO. 10-35 1/2-53. REPLACED MYERS MONUMENTS WITH 2 1/2" x 30" ALUM. PIPE WITH 1/2" ALUM. CAP - SEE CORNER CERTIFICATES.
- ⊙ FOUND MONUMENT BY JAMES HABLETON, L.S. NO. 645, RE-MONUMENTED FROM EXISTING, ORIGINAL EVIDENCE. SEE BAKER COUNTY SURVEY NO. 10-35 1/2-16, REPLACED MONUMENT WITH 2 1/2" x 30" ALUM. PIPE WITH 1/2" ALUM. CAP. SEE CORNER CERTIFICATE.
- ⊙ FOUND MONUMENT BY LELAND MYERS, RE-MONUMENTED FROM EXISTING, ORIGINAL EVIDENCE. SEE CORNER CERTIFICATE.
- (Z) SEE DETAIL DESIGNATED BY LETTER.
- △ SEE NOTE DESIGNATED BY NUMBER.
- NATIONAL FOREST BOUNDARY POSTED ACCORDING TO THIS CONTRACT. NOTE: LAND TRADES ARE IN PROCESS BETWEEN FOREST SERVICE AND LAND OWNERS - POSTED BOUNDARY DOES NOT REFLECT PRESENT BOUNDARY IN ALL CASES.
- ROAD CROSSINGS ON TRAVERSE LINES.
- (000) RECORD BEARINGS AND DISTANCES.

**SURVEYOR'S CERTIFICATE:**

I, WILLIAM R. WELLS, A REGISTERED PROFESSIONAL LAND SURVEYOR IN THE STATE OF OREGON, HEREBY CERTIFY, THAT THIS PLAT, AND THE NOTES HEREON, ARE A CORRECT REPRESENTATION OF A SURVEY PERFORMED BY ME DURING THE MONTHS OF MAY & JUNE, 1986, AT THE REQUEST OF U.S.D.A. FOREST SERVICE. SAID PLAT AND NOTES WERE PREPARED IN ACCORDANCE WITH THE STATUTES OF THE STATE OF OREGON AND THE ARTICLES OF THE CONTRACT.

REGISTERED PROFESSIONAL LAND SURVEYOR  
*William R. Wells*  
 WILLIAM R. WELLS  
 1106

*William R. Wells*  
 WILLIAM R. WELLS, P.L.S.  
 OREGON LICENSE NO. 1106

FILED 7-21-86  
 BAKER COUNTY SURVEYOR  
 SURVEY NO. 10-35 1/2-157

WILLIAM R. WELLS, PLS  
 LAND SURVEYING SERVICES  
 P.O. BOX 1696  
 PENDELTON, OREGON 97801  
 PHONE: 503 276 6362

PROJECT:  
 GIESER MINES CADASTRAL SURVEY  
 PARTIAL BREAKDOWN OF SECTIONS 10, 14 & 15  
 AND  
 SURVEY OF PORTIONS OF MS 332, MS 508, MS 509AM  
 AND MS 727  
 ALL IN T.10S., R.35 1/2 E., BAKER CO., OREGON  
 CONTRACT NO. 53-04H1-5-9781

Date 6-14-86 Dr. By S.K.M.  
 Ck. By W.R.W. No.