

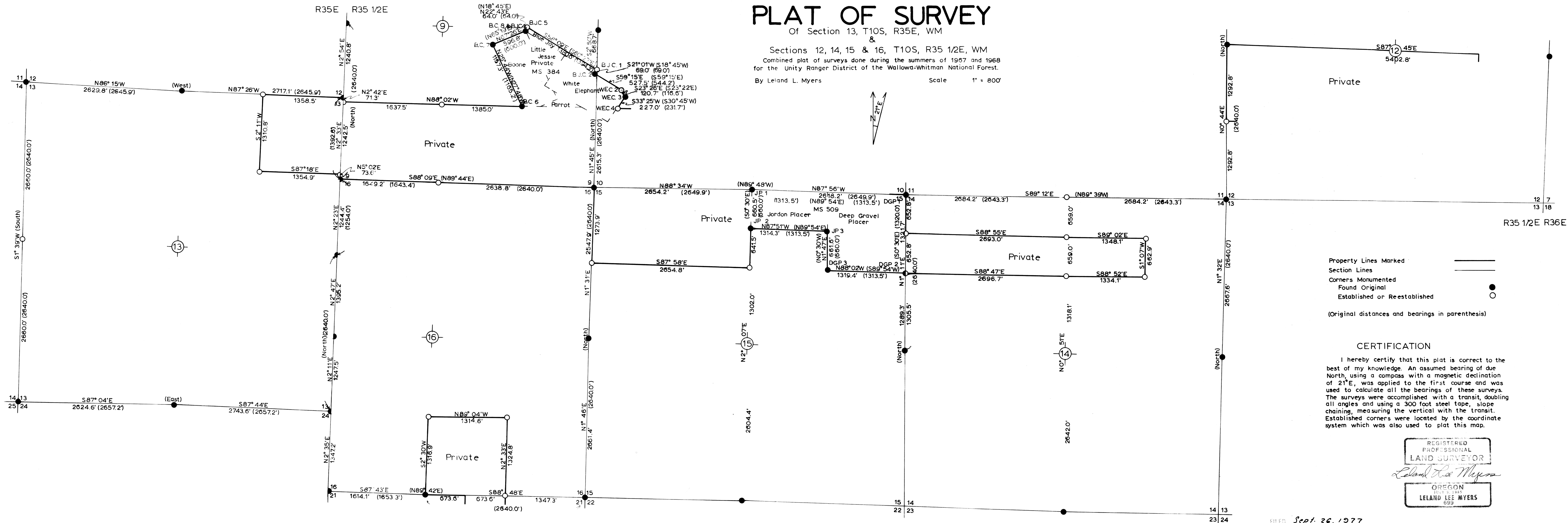
PLAT OF SURVEY

Of Section 13, T10S, R35E, WM

Sections 12, 14, 15 & 16, T10S, R35 1/2E, WM
 Combined plat of surveys done during the summers of 1967 and 1968
 for the Unity Ranger District of the Wallowa-Whitman National Forest.

By Leland L. Myers

Scale 1" = 800'



Property Lines Marked _____
 Section Lines _____
 Corners Monumented
 Found Original ●
 Established or Reestablished ○
 (Original distances and bearings in parenthesis)

CERTIFICATION

I hereby certify that this plat is correct to the best of my knowledge. An assumed bearing of due North, using a compass with a magnetic declination of 21°E, was applied to the first course and was used to calculate all the bearings of these surveys. The surveys were accomplished with a transit, doubling all angles and using a 300 foot steel tape, slope chaining, measuring the vertical with the transit. Established corners were located by the coordinate system which was also used to plat this map.

REGISTERED
 PROFESSIONAL
 LAND SURVEYOR
Leland L. Myers
 OREGON
 JULY 5, 1965
 LELAND LEE MYERS
 699

FILED *Sept. 26, 1977*
 BAKER COUNTY SURVEYOR
 SURVEY NO. *10-354-53*