

BASIS OF BEARING
 N. 89° 11' 32" E., 2638.83' - BETWEEN MONUMENTS BY FIELD MEASUREMENT
 (N. 89° 11' 32" E., 2638.02' - BETWEEN MONUMENTS, CALCULATED FROM SURVEY NO. 9-46-7)
 SULLIVAN LANE (BA. CO. RD. NO. 978)

NORTH ¼ CORNER, SECTION 30
 FD. 2½" GLO BRASS CAP
 MONUMENT AT NORTH, SOUTH
 & EAST FENCE INTERSECTION

LINE TABLE

LINE	BEARING	DISTANCE
[L1]	S. 64° 58' 37" W.	49.7'
[L2]	S. 5° 04' 32" E.	183.35'
[L3]	S. 21° 20' 54" E.	119.63'
[L4]	S. 29° 06' 48" E.	175.34'
[L5]	S. 26° 56' 49" E.	220.65'
[L6]	S. 29° 29' 37" E.	126.70'
[L7]	S. 38° 35' 53" E.	391.61'
[L8]	S. 54° 42' 53" E.	193.34'
{L9}	{N. 25° 04' E.}	{64.0'}
L9*	N. 24° 49' 00" E.	64.00'
{L10}	{S. 68° 31' E.}	{83.1'}
L10*	S. 68° 46' 00" E.	83.10'
{L11}	{N. 85° 43' E.}	{186.8'}
L11*	N. 85° 28' 00" E.	186.80'
{L12}	{N. 82° 38' E.}	{92.7'}
L12*	N. 82° 23' 00" E.	92.70'
L13	S. 68° 46' 00" E.	26.18'
L14	S. 68° 46' 00" E.	56.92'
L15	N. 85° 28' 00" E.	122.57'
L16	N. 85° 28' 00" E.	64.23'
L17	S. 26° 56' 49" E.	28.35'
L18	N. 0° 51' 00" W.	175.20'
L19	N. 24° 48' 38" W.	50.00'
L20	N. 10° 07' 18" W.	105.29'
L21	S. 38° 35' 53" E.	260.30'
L22	S. 38° 35' 53" E.	131.31'
L23	(N. 89° 36' 15" E.)	225.34'
L24	N. 10° 07' 18" W.	60.45'
L25	N. 10° 07' 18" W.	44.84'

* MEANS ROTATED 0° 15' 00" COUNTERCLOCKWISE

LEGEND

- Set 5/8" x 30" rebar with plastic cap marked "HANLEY ENGR. PLS 1817".
- Found, brass cap monument as noted.
- ◆ For descriptive purposes only.
- () Record Data Per Ba. Co. Sur. No. 9-46-7.
- { } Record Data Per Ba. Co. Deed Book 169, Page 300, 2085' Contour Line.
- [] Record Data Per Ba. Co. Deed No. 91 01 007.
- (()) Record Data Per Ba. Co. Deed No. 91 26 015.

**MAP OF SURVEY
 FOR PROPERTY LINE ADJUSTMENT**
 Located in the Northwest ¼ of Section 30,
 T. 9 S., R. 46 E., W.M., Baker County, Oregon
 Surveyed April 27 thru May 12, 2005
 for Baker County
 Scale: 1" = 200'

REGISTERED
 PROFESSIONAL
 LAND SURVEYOR

Thomas J. Hanley
 OREGON
 JULY 13, 1979
 THOMAS J. HANLEY
 1817

FILED May 16, 2005
 BAKER COUNTY SURVEYOR
 SURVEY NO. 9-46-10

Renews June 30, 2005

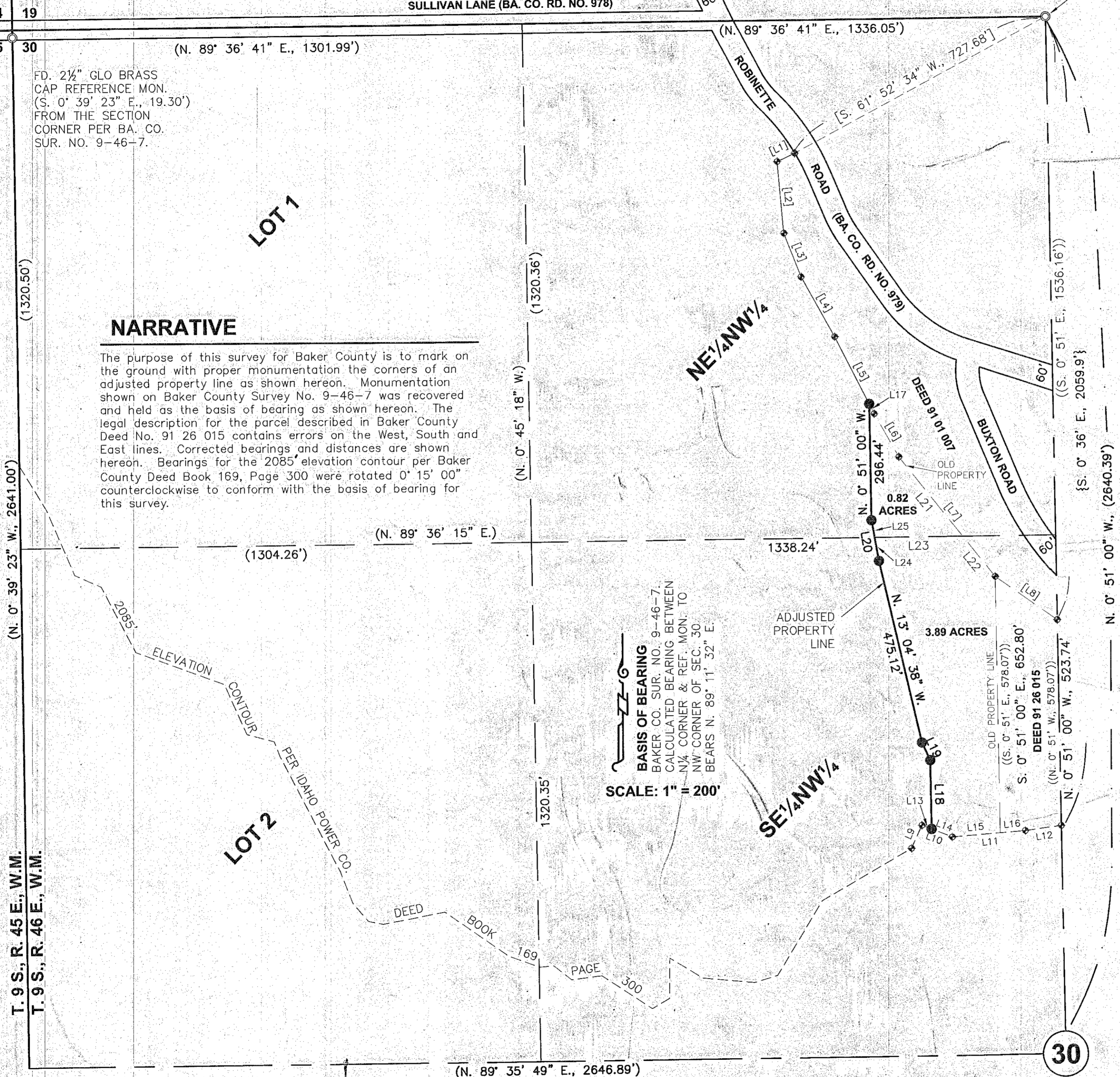
NARRATIVE

The purpose of this survey for Baker County is to mark on the ground with proper monumentation the corners of an adjusted property line as shown hereon. Monumentation shown on Baker County Survey No. 9-46-7 was recovered and held as the basis of bearing as shown hereon. The legal description for the parcel described in Baker County Deed No. 91 26 015 contains errors on the West, South and East lines. Corrected bearings and distances are shown hereon. Bearings for the 2085' elevation contour per Baker County Deed Book 169, Page 300 were rotated 0° 15' 00" counterclockwise to conform with the basis of bearing for this survey.

BASIS OF BEARING
 BAKER CO. SUR. NO. 9-46-7.
 CALCULATED BEARING BETWEEN
 NW CORNER & REF. MON. TO
 NW CORNER OF SEC. 30
 BEARS N. 89° 11' 32" E.

SCALE: 1" = 200'

HANLEY ENGINEERING, INC.
 2043 MAIN STREET
 BAKER CITY, OREGON



T. 9 S., R. 45 E., W.M.
 T. 9 S., R. 46 E., W.M.

(N. 89° 35' 49" E., 2646.89')

30