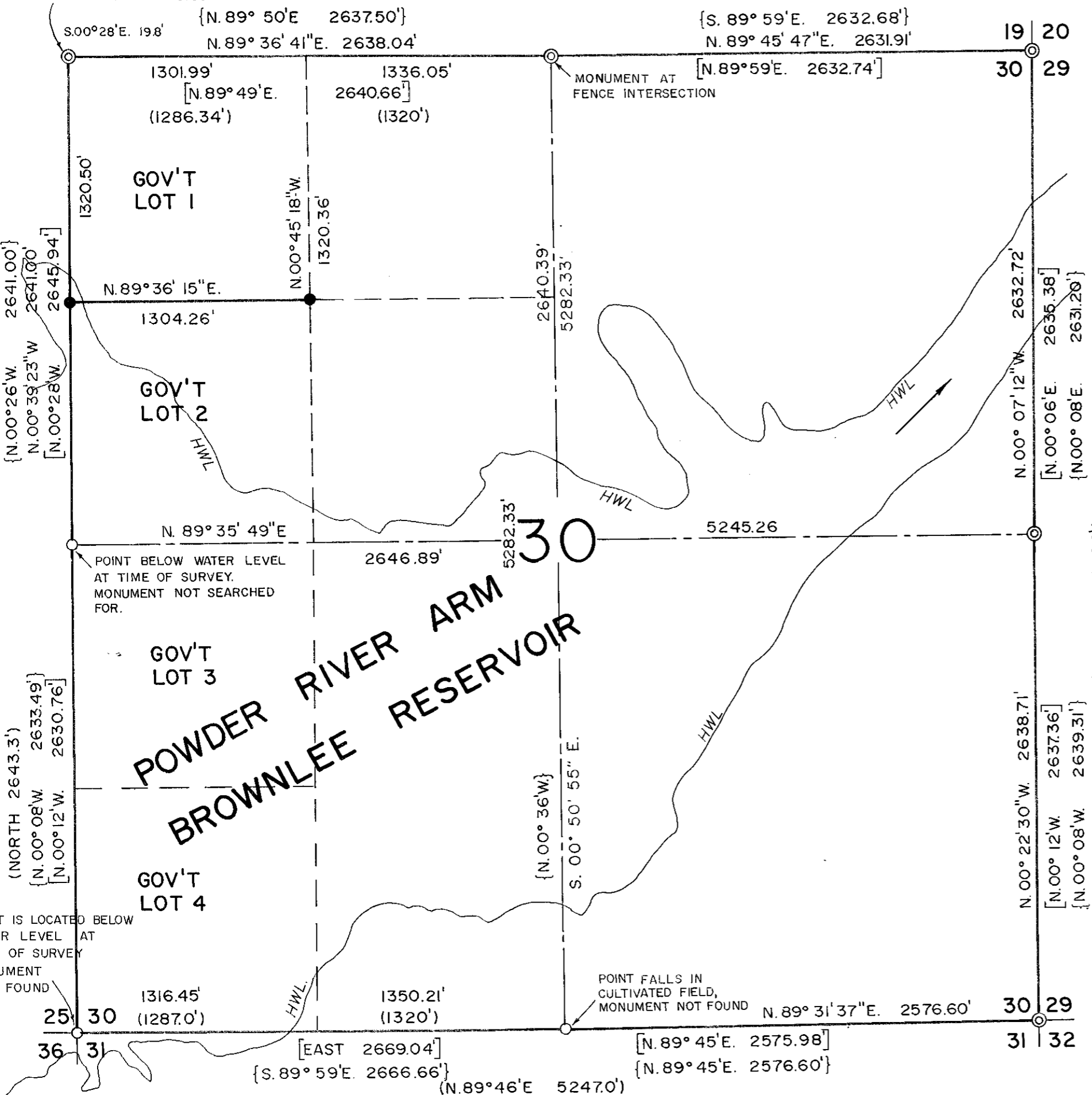


T. 9S., R. 46E., W.M.

FOUND BLUE COLORED STONE WITH "X" CHISELED IN TOP, 1.0' BELOW ROAD SURFACE. REFERENCED BY 2 1/2" GLO MONUMENT WHICH BEARS S.00° 39' 23"E. 19.30'

(N. 89° 36' E. 5246.34')



NARRATIVE

The purpose of this survey for George and Wadeen Holcomb is to mark on the ground the line between Government Lots 1 and 2. Existing monumentation was recovered along the North and East lines of Section 30. Monumentation along the West and South sides of the section are either under Brownlee Pool or missing due to field cultivation. The missing corner locations are based on the Idaho Power Co. survey of 1957 by L.G. Burnap, PLS No. 366. The West quarter corner is S.00° 39' 23"W., 2641.0 feet from the Northwest section corner and the South quarter corner is S.89° 45' W., 2576.60 feet (before rotation) from the Southeast section corner. The Burnap map bearings were rotated 00° 13' 23" counterclockwise to conform to the meridian used on this survey, based on Survey No. 9-46-2 for Marlette and Whitnah. USBLM dependent retracement survey of 1938 data is included on this map of survey. These GLO notes and plat contain errors regarding the placement of reference monument for the Northwest section corner. The ref. mon. is located S.00° 12' E., 0.3 chains from the found corner stone, not N.01° 04' W., 0.3 as described. (These are plat brngs, unrotated). The section was subdivided according to standard procedures with the North corners of Lot 2 established in their proper positions.

LEGEND

- Monument not recovered point established from record data
- ⊙ Found 2 1/2" brass cap monument on 1" iron pin GLO Survey No. 218, unless otherwise noted
- Set 5/8"x30" rebar with plastic cap marked "HANLEY ENGR. PLS 1206"
- () GLO data Original Survey No. 388, May 7, 1881
- [] GLO data Resurvey No. 318, Sept. 21, 1938
- { } Survey data, Idaho Power Drawing D-BR-84 August 26, 1957, L.G. Burnap

REGISTERED
PROFESSIONAL
LAND SURVEYOR

James D. Hanley
OREGON
SEPTEMBER 23, 1977
JAMES D. HANLEY
1206

RENEWAL DATE JAN. 1, 1996

HANLEY ENGINEERING
2043 MAIN STREET
BAKER CITY, OREGON

MAP OF SURVEY

Section 30

T. 9S., R. 46E., W.M.

Surveyed Jan. 5, Feb. 25, 1994 Scale 1"=600'

for George Holcomb

FILED April 1, 1994

BAKER COUNTY SURVEYOR

SURVEY NO. 9-46-7

