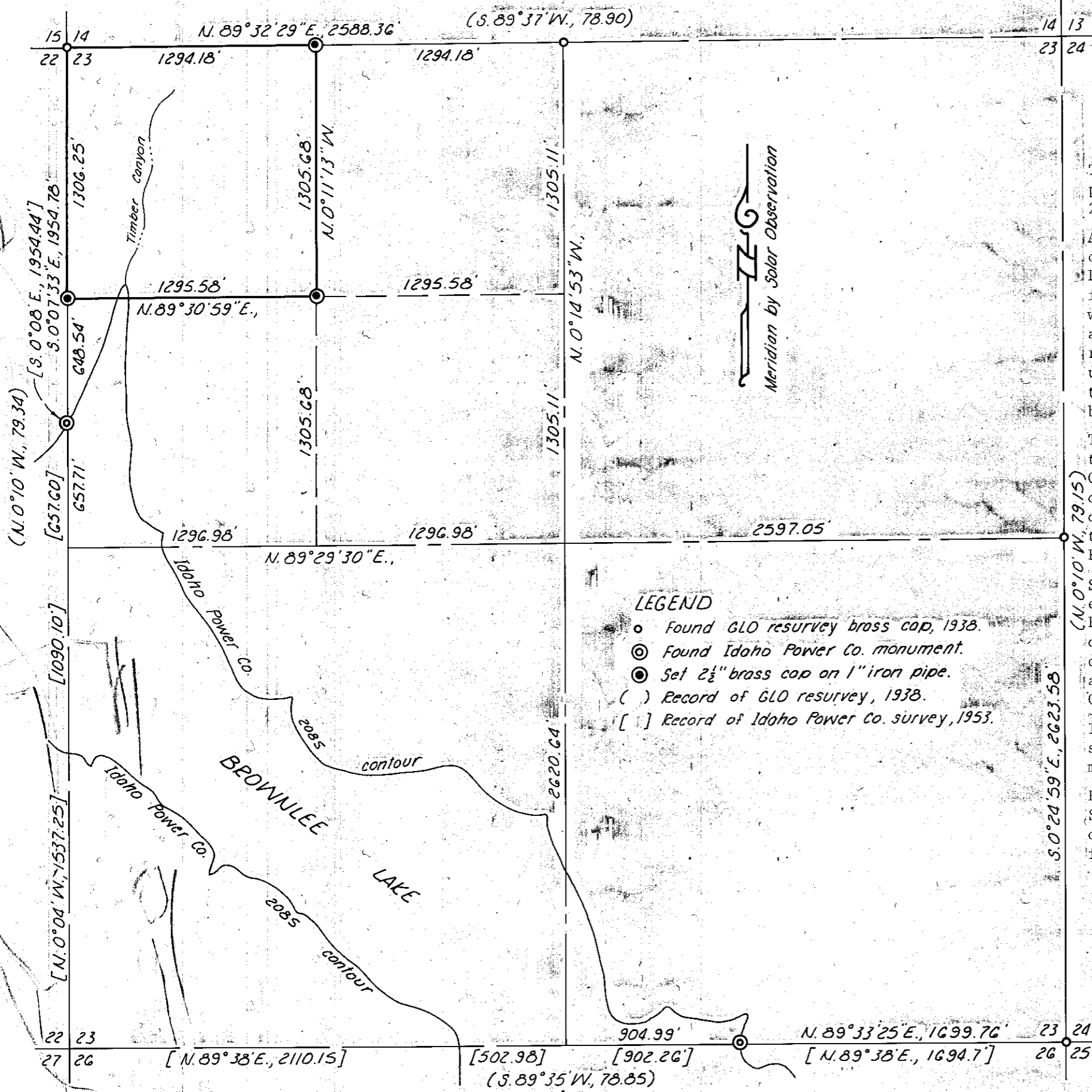


T. 9 S., R. 46 E., W.M.



SURVEY NARRATIVE

This survey was performed at the request of George Holcomb for the purpose of monumenting the exterior boundary of the NW $\frac{1}{4}$ NW $\frac{1}{4}$ of Section 23, T 9 S, R 46 E, W.M.

All pertinent government corners were recovered with the exception of the South and West quarter corners which are now submerged by Brownlee Lake. These submerged corners were referenced by Idaho Power Company in conjunction with the Brownlee hydroelectric development project with monuments at the 2085 foot elevation contour line. These monuments are 2-inch diameter pipes with lead plugs and their positions are recorded on Idaho Power Co. map no. E-11441, sheet 8 of 28, and filed under Baker County Survey No. 9-46-3. From this monumentation record, the positions of the South and West quarter corners were re-established by the following method:

The South quarter corner position was re-established by extending the line between the Southeast section corner and the Idaho Power Co. monument on the South line SE $\frac{1}{4}$ Section 23 the proportioned distance of 904.95 feet. A ratio of +1.00299 was developed from the measured distance of 1699.76 feet and the record distance of 1694.7 feet between the above mentioned monuments to yield 904.95 feet from the Idaho Power Co. reference monument to the South quarter corner position.

Similarly, the West quarter corner position was re-established by extending the line between the Northwest section corner and the Idaho Power Co. monument on the West line NW $\frac{1}{4}$ Section 23 the proportioned distance of 657.71 feet. A ratio of +1.00017 from the measured distance of 1954.78 feet and the record distance of 1954.44 feet between the above mentioned monuments to yield 657.71 feet from the Idaho Power Co. reference monument to the West quarter corner position.

It is noted that a large slope failure in the vicinity of the Southwest section corner of Section 23 has in all probability moved that corner monument many feet downhill.

From the above noted direct ties and re-established corner positions, Section 23 was properly subdivided in full accordance with the statutes of the State of Oregon and the BLM Manual of Survey Instructions and is correctly represented on this map.

LEGEND

- Found GLO resurvey brass cap, 1938.
- ⊙ Found Idaho Power Co. monument.
- Set 2 $\frac{1}{2}$ " brass cap on 1" iron pipe.
- () Record of GLO resurvey, 1938.
- [] Record of Idaho Power Co. survey, 1953.

MAP OF SURVEY
 THE NW $\frac{1}{4}$ NW $\frac{1}{4}$ OF SECTION 23, T 9 S, R, 46 E, W.M.
 Surveyed May 24 & 29, and May 13, 1982 Scale 1"=600'
 For George Holcomb

FILED May 27, 1982
 BAKER COUNTY SURVEYOR
 SURVEY NO. 9-46-4

REGISTERED
 PROFESSIONAL
 LAND SURVEYOR

William L. Hanley

OREGON
 JULY 14, 1978
 WILLIAM L. HANLEY
 1639