

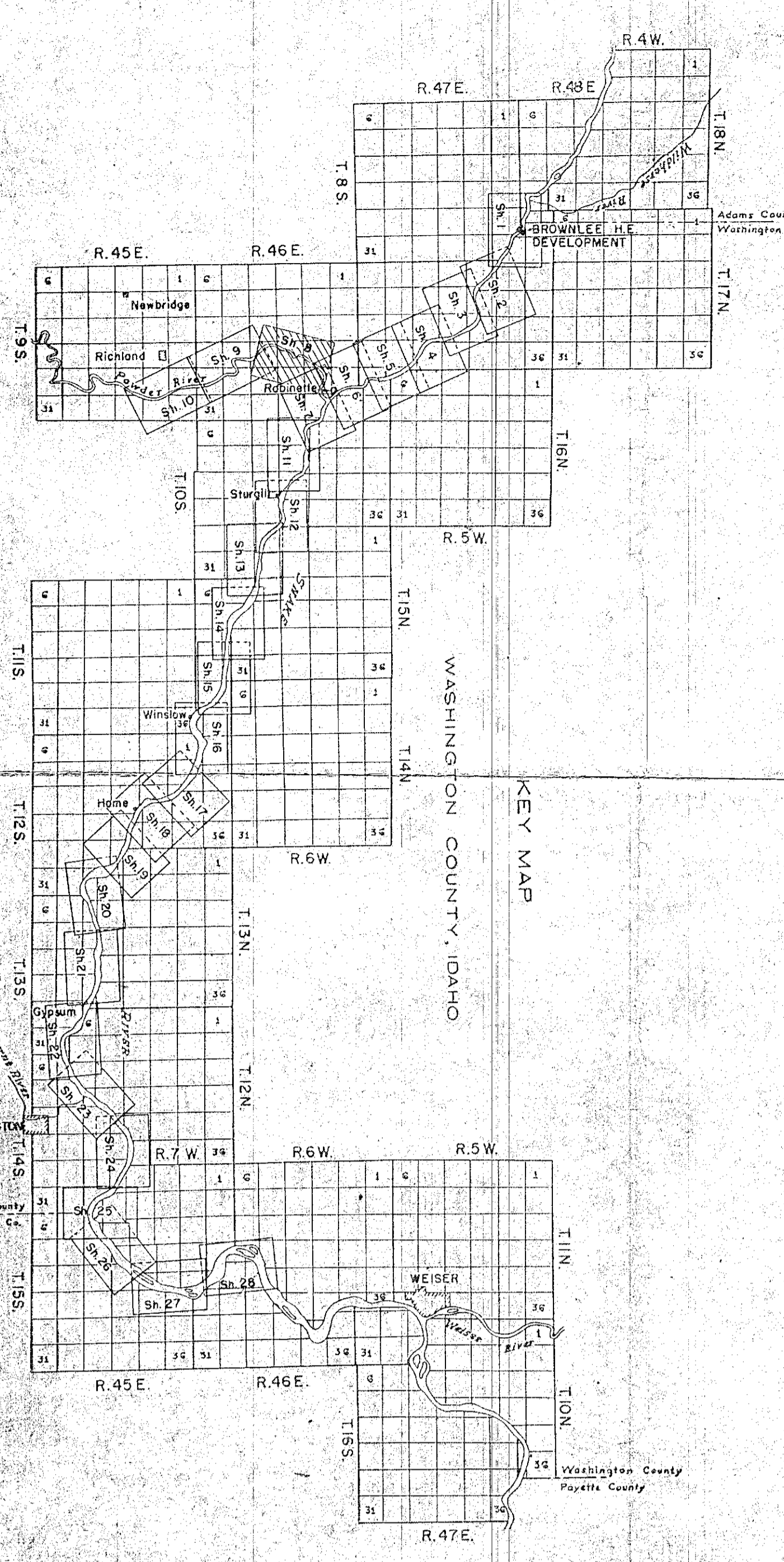
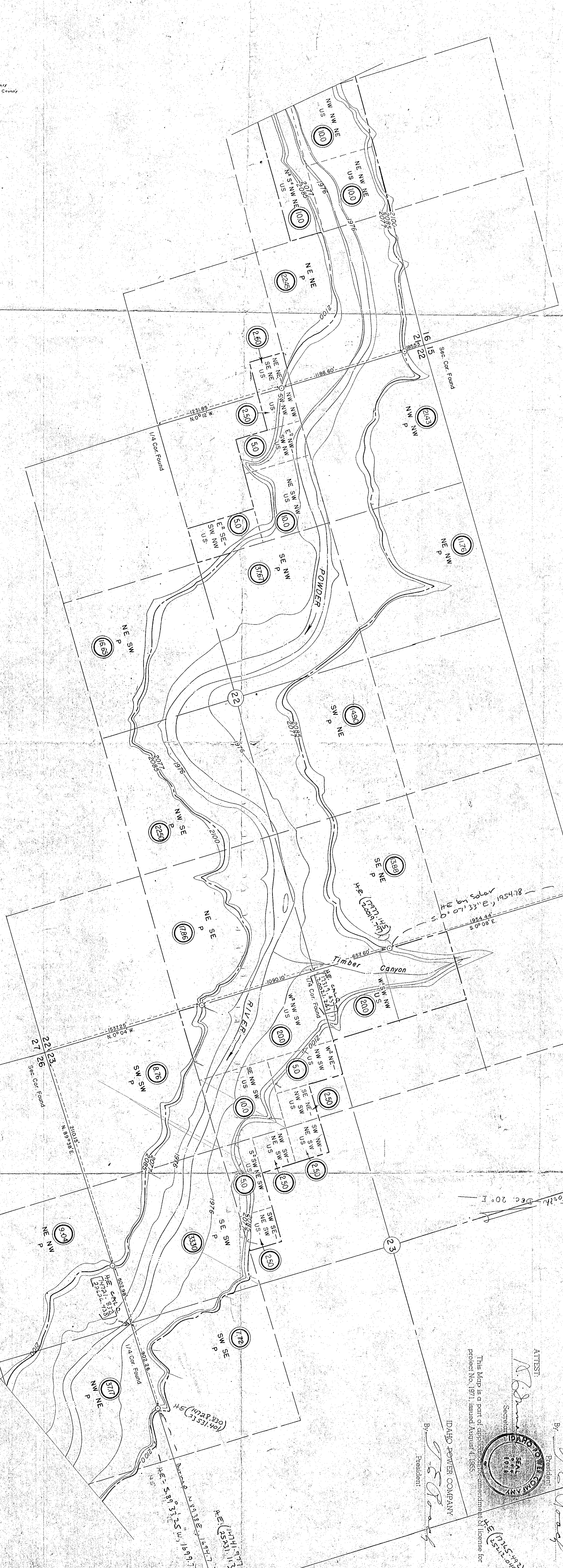
STATE OF IDAHO, County of Ada, ss.  
 I, E. Emery, being duly sworn, says he is by occupation an engineer, employed by the Idaho Power Company, and that this map was prepared under the Idaho Power Company, and that this map was prepared under the supervision of the Idaho Power Company, and that the location and design of the works described in the accompanying application; to the best of his knowledge and belief, correctly represents all other matters herein, and represents a safe, adequate, and feasible plan for the fullest economic utilization of the power resources of the State of Idaho.  
 Witness my hand and seal of office this 5th day of May, 1958.  
 E. Emery, Engineer  
 No. 526

Secretary of Idaho Power Company  
 K. W. H. H. H. H.  
 Notary Public for Idaho  
 Residing at Boise, Idaho.

IDAHO POWER COMPANY  
 By: [Signature]  
 President

ATTN: [Signature]  
 Secretary  
 Idaho Power Company  
 Boise, Idaho  
 This Map is a part of a complete application for a license for project No. 1971, issued August 4, 1955, commencing on [blank] day of [blank] month, 1955.

OREGON  
 BAKER COUNTY  
 T. 9S, R. 4E



### Legend

- P Private Lands.
- US U.S. Government Lands.
- Project Boundary (Metes & Bounds).
- Project Boundary Elev. as indicated (U.S.G.S. Datum).
- Maximum Water Level Elev. 2077' at Dam (Crest of Overflow Dam).
- Minimum Water Level Elev. 1976'.
- Original Water Channel.
- I.P.Co. Monument
- Areas in Acres (For Detail See Exhibit F.)

NO. DATE	REVISION	BY
2 8-25-58	REFILED WITH FIELD LOGS	GLG
1 8-19-58	REVISED AS PER FIELD LETTER	JEP
1 2-9-50	DATE	2/9/50

REVISED, OCTOBER 1959

EXHIBIT "K"  
 PROJECT 1971-IDAHO  
 BROWNLEE H.E. DEVELOPMENT  
 DETAIL MAP  
 IDAHO POWER COMPANY  
 BOISE IDAHO  
 SCALE 1 in. = 400 ft.  
 MAY 1953 SHEET 9 of 28 E-11441

FILED AS OF 1958  
 BAKER COUNTY SURVEYOR  
 SURVEY NO. 1763

Scale in Hundreds of Feet