

PARTITION PLAT NO. P2015-008

HANLEY ENGINEERING, INC.

P.O. BOX 701, 2043 MAIN STREET, BAKER CITY, OREGON 97814 (541) 523-3803

**A PARTITION OF LAND SITUATED IN THE
SE¹/₄NE¹/₄ SECTION 23,
TOWNSHIP 9 SOUTH, RANGE 45 EAST,
WILLAMETTE MERIDIAN, BAKER COUNTY, OREGON
AUGUST, 2015**

FND. 1" PIPE W/ 2.5" BRASS CAP
STAMPED
T9S R45E
S14 S13
S23 S24
PLS 699
2004
BAKER CO. SUR. NO. 9-45-76

REFERENCES

Baker County Deed No.	B97 30 238
Baker County Deed No.	B05 23 0054
Baker County Deed No.	B12 35 0289
Baker County Deed No.	B12 35 0292
Baker County Deed No.	B12 43 0321
Baker County Sur. No.	9-45-37
Baker County Sur. No.	9-45-61 MP
Baker County Sur. No.	9-45-66
Baker County Sur. No.	9-45-76

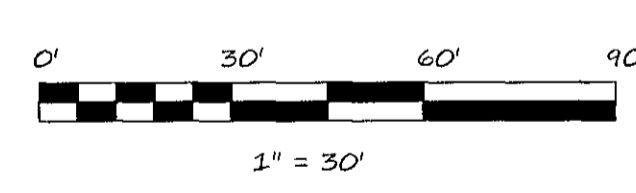
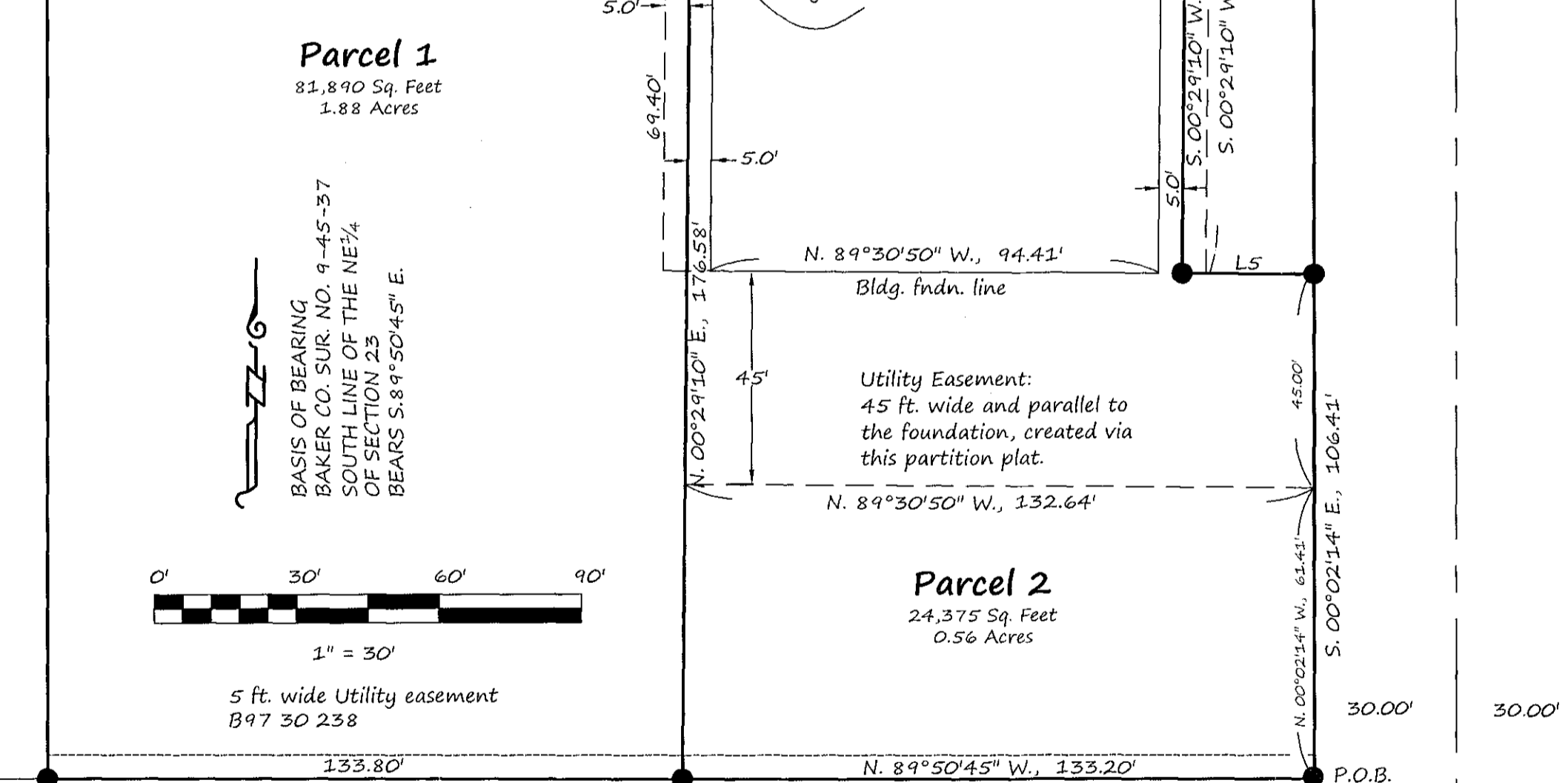
LEGEND

- Set 5/8" x 30" rebar with plastic cap marked "HANLEY ENGR. PLS 1817"
- Found, monument as noted
- () Record Data Per Ba. Co. Surv. No. 9-45-37

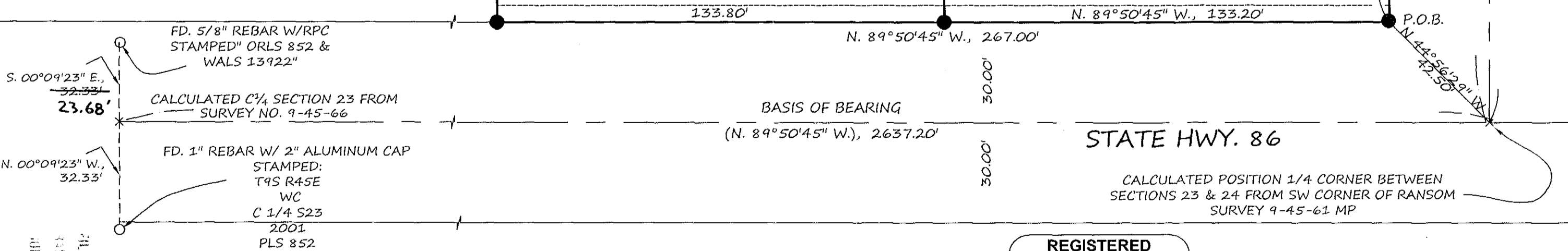
LINE TABLE

LINE	BEARING	DISTANCE
L1	S. 89°30'50" E.	5.50'
L2	N. 00°29'10" E.	27.93'
L3	N. 00°29'10" E.	5.50'
L4	S. 89°30'50" E.	34.90'
L5	S. 89°30'50" E.	27.82'

N. 00°02'14" W., 398.00'



BASIS OF BEARING
BAKER CO. SUR. NO. 9-45-37
SOUTH LINE OF THE NE¹/₄
OF SECTION 23
BEARS S. 89°50'45" E.



FILED
BAKER COUNTY SURVEYOR
JANUARY NO. 9-45-916
AUG 8 2015

I, Thomas J. Hanley, hereby certify that this is an exact duplicate copy of the partition plat as submitted to the Baker County Clerk for recording.

Thomas J. Hanley
Thomas J. Hanley

**REGISTERED
PROFESSIONAL
LAND SURVEYOR**
Thomas J. Hanley
OREGON
JULY 13, 1979
THOMAS J. HANLEY
1817

Renews June 30, 2017

SHEET 1 OF 2

B15 39 0187

B15 39 0188

B15 39 0189